



Wilton Gate Salisbury

Our fantastic selection of 2, 3 and 4 bedroom homes at Wilton Gate, in the charming village of Netherhampton.

Our collection of new homes at Wilton Gate, in the charming village of Netherhampton, located on the edge of Salisbury, is an ideal location offering a primary school, local centre, employment opportunities, and a country park nearby. Not to mention it is easy to access Andover, Warminster, Southampton, and Bath.

Salisbury boasts a rich history with its roots in the cloth industry, the Kennet & Avon Canal, and the Great Western Railway.

The famous Salisbury cathedral is just 2 miles away, where you can find the best-preserved copy of the Magna Carta in the world. It doesn't just offer history, there is plenty of natural beauty surrounding the area for you to enjoy.

Isn't it time to visit the beautiful new homes at Wilton Gate to see what it has to offer?!

Wilton Gate

Netherhampton Road, Salisbury, SP2 8FY | 0172 263 8969

lindenhomes.co.uk

Linden
HOMES

Wilton Gate Salisbury

Phase 3 Development layout



4 bedroom home

- The Dahlia
- The Hyacinth
- The Lavender
- The Lupin

3 bedroom home

- The Bluebell
- The Forget-Me-Not
- The Sunflower
- The Sunflower II

2 bedroom home

- The Daisy

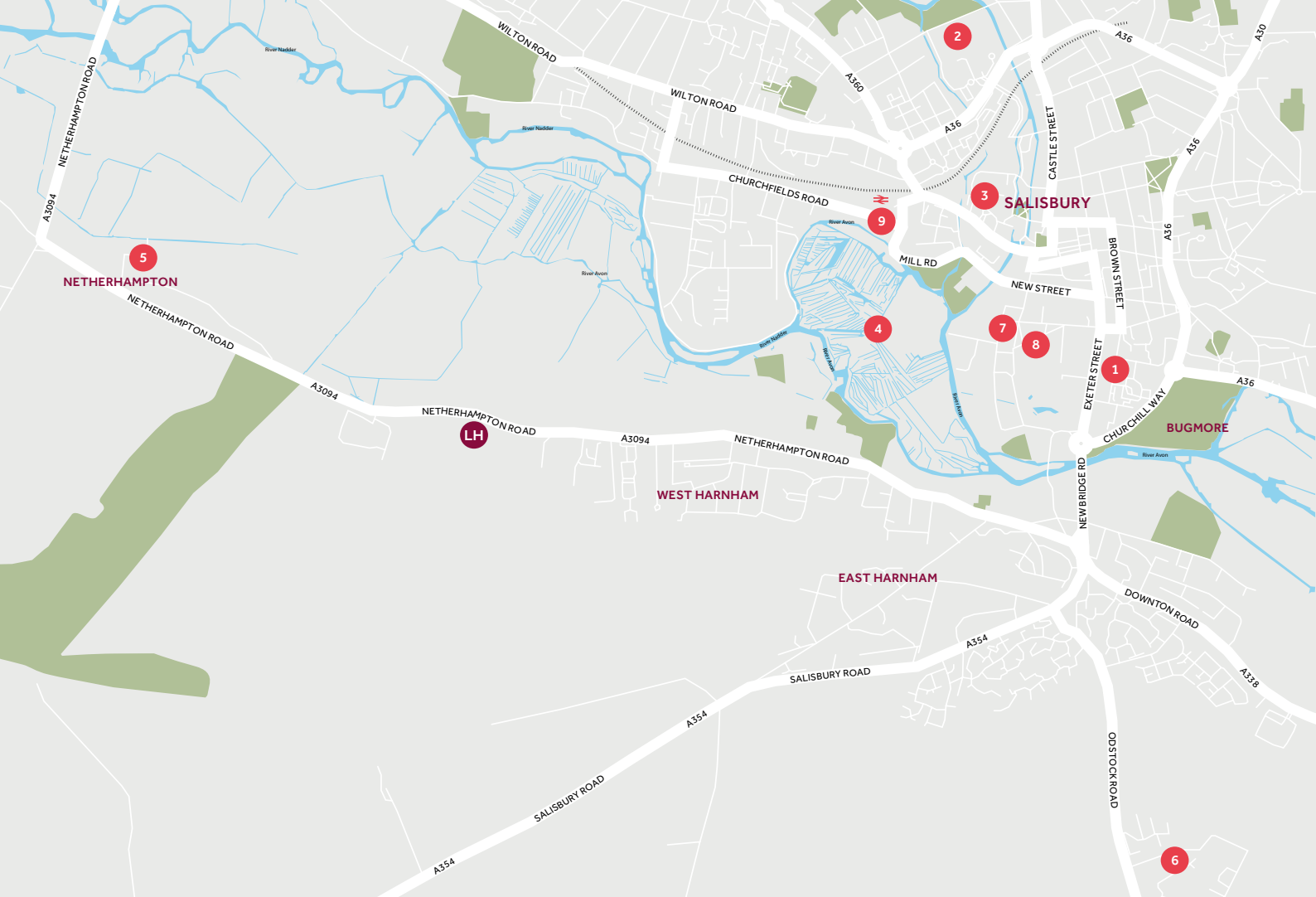
- Pre-Sold Homes

- | | | | |
|-----|----------------------|----|-------------|
| v | visitor space | BS | bin store |
| BCP | bin collection point | CS | cycle store |
| SS | sub station | | |

The site plan shown on this page has been produced for home identification purposes only and is not to scale.

The development layout, landscaping and tenure of all dwellings may be subject to change throughout the course of the development. Homes shown as "pre-sold" and other properties sold on the general market may not be sold to individual owner-occupiers and may instead be transferred to other purchasers, including private investors or affordable housing providers. As partner arrangements are agreed, the mix of tenures across a development can change significantly and rapidly.

Finishes and materials may vary from those shown. Please check the details of your chosen plot and house type with the sales consultant. Development layout plan correct at time of production.



Around the local neighbourhood

- | | | |
|--|---|---|
| 1 Bishop Wordsworth's School
SP1 2ED | 4 Salisbury Water Meadows
SP2 7RZ | 7 Mompesson House
SP1 2EL |
| 2 Waitrose & Partners
SP2 7TS | 5 Manor Farm Nursery School
SP2 8PU | 8 Salisbury Cathedral
SP1 2EJ |
| 3 Sainsbury's
SP1 1BD | 6 Salisbury District Hospital
SP2 8BJ | 9 Salisbury Train Station
SP2 7RS |

Cover photograph of Salisbury Cathedral across Harnham water meadows. Not view from the development.
The street scene shown has been produced for illustrative purposes only. Please check the details of the homes you are interested in with our sales consultant.

When you have finished with this leaflet please recycle it.

Linden Homes, Vistry Bristol
The Jacobs Building, Berkeley Place, Clifton,
Bristol BS8 1EH T.01722 638 969
Produced by House Marketing 206053

lindenhomes.co.uk



Linden
HOMES



The Daisy

2 bedroom home

Wilton Gate

Netherhampton Road, Harnham
Salisbury, Wiltshire, SP2 8FY | 0172 263 8969

lindenhomes.co.uk



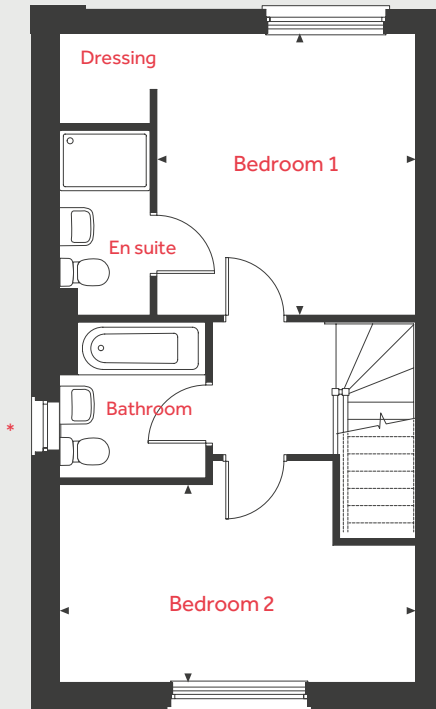
Linden
HOMES

The Daisy

2 bedroom home

Homes 608, 609

First Floor



Ground Floor

Kitchen/Dining room

4.71m x 3.35m 15'5" x 11'0"

Living room

3.62m x 3.80m 11'11" x 12'6"

First Floor

Bedroom 1

3.50m x 3.72m 11'6" x 12'2"

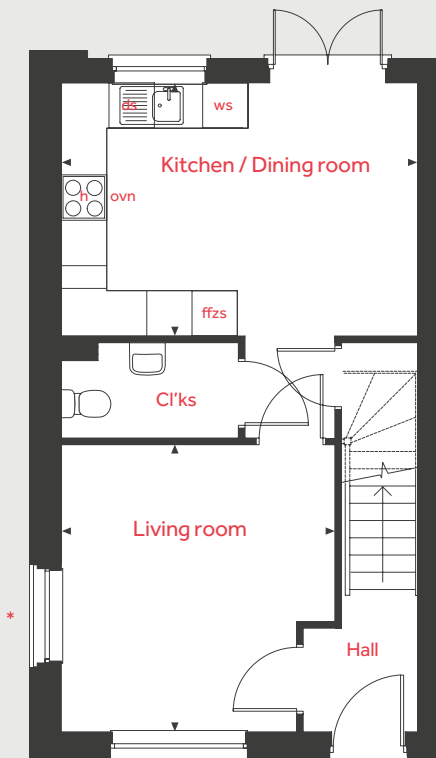
Bedroom 2

4.71m x 2.62m 15'5" x 8'7"

ovn	oven	ffzs	fridge freezer space
h	hob	cup'd	cupboard
ds	dishwasher space	< >	measuring points
ws	washing machine space		

* Plot 608 has no window in this location

Ground Floor



The illustrations shown are computer generated impressions of how the property may look and are indicative only. External details or finishes may vary on individual plots and homes may be built in either detached or attached styles depending on the development layout. Exact specifications, window styles and whether a property is left or right handed may differ from plot to plot. Please speak to our sales consultant for specific plot details.

The floorplan has been produced for illustrative purposes only. Room sizes shown are between arrow points as indicated on plan. The dimensions have tolerances of + or -50mm and should not be used other than for general guidance. If specific dimensions are required, enquiries should be made to the sales consultant. The floor plans shown are not to scale. Measurements are based on the original drawings. Slight variations may occur during construction.

11.25

Linden
HOMES



The Bluebell

3 bedroom home

Wilton Gate

Netherhampton Road, Harnham
Salisbury, Wiltshire, SP2 8FY | 0172 263 8969

lindenhomes.co.uk



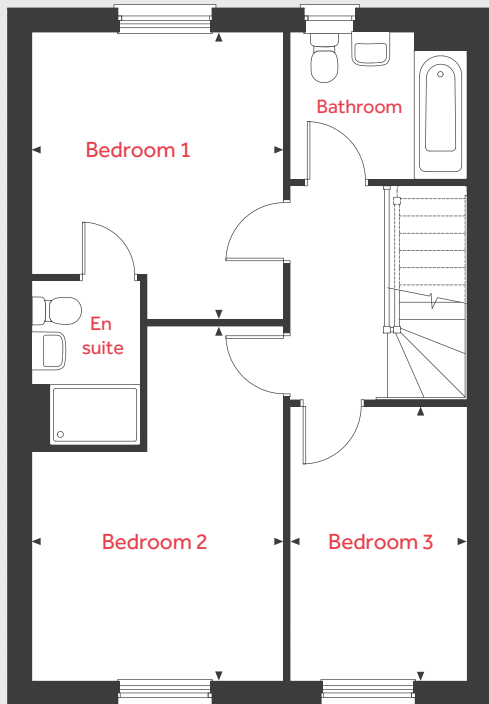
Linden
HOMES

The Bluebell

3 bedroom home

Homes 539, 540, 541, 542, 545,
546, 547, 548, 575, 576, 579, 603,
604, 617, 618 & 619

First Floor



Ground Floor

Kitchen/Living/Dining

5.75m x 8.58m 18'10" x 28'2"

First Floor

Bedroom 1

3.33m x 3.80m 10'11" x 12'6"

Bedroom 2

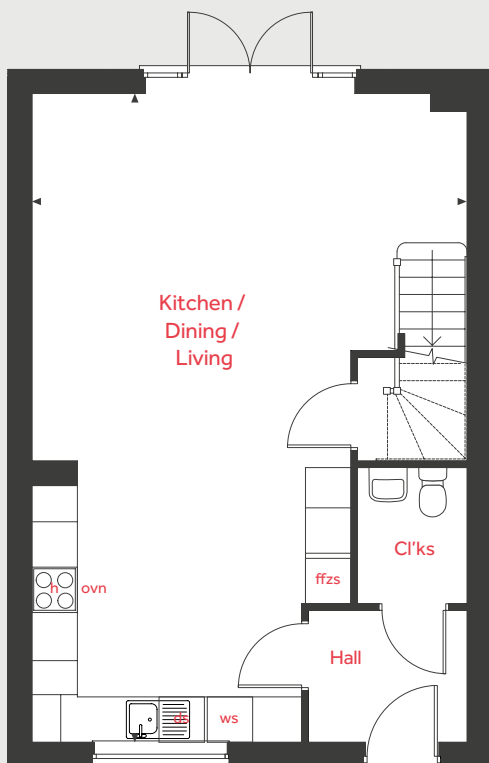
3.33m x 4.69m 10'11" x 15'5"

Bedroom 3

2.34m x 3.63m 7'8" x 11'11"

ovn	oven	ffzs	fridge freezer space
h	hob	cup'd	cupboard
ds	dishwasher space	< >	measuring points
ws	washing machine space		

Ground Floor



The illustrations shown are computer generated impressions of how the property may look and are indicative only. External details or finishes may vary on individual plots and homes may be built in either detached or attached styles depending on the development layout. Exact specifications, window styles and whether a property is left or right handed may differ from plot to plot. Please speak to our sales consultant for specific plot details.

The floorplan has been produced for illustrative purposes only. Room sizes shown are between arrow points as indicated on plan. The dimensions have tolerances of + or - 50mm and should not be used other than for general guidance. If specific dimensions are required, enquiries should be made to the sales consultant. The floor plans shown are not to scale. Measurements are based on the original drawings. Slight variations may occur during construction.

11.25

Linden
HOMES



The Sunflower

3 bedroom home

Wilton Gate

Netherhampton Road, Harnham
Salisbury, Wiltshire, SP2 8FY | 0172 263 8969

lindenhomes.co.uk



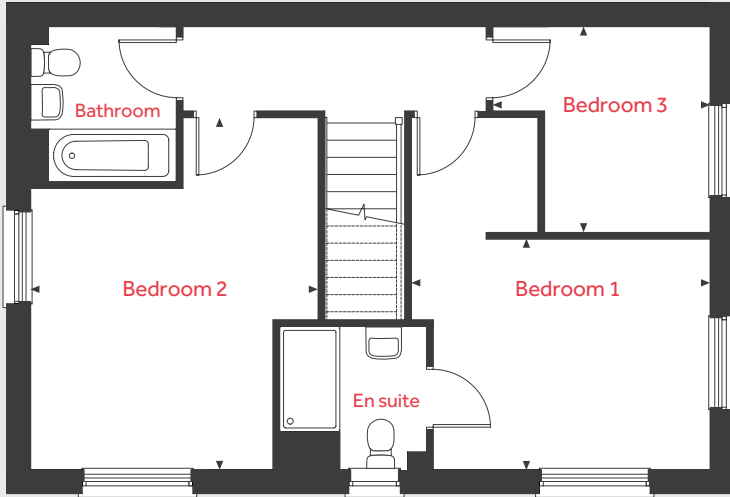
Linden
HOMES

The Sunflower

3 bedroom home

Homes 538, 552, 573, 580,
596, 599 & 625

First Floor



Ground Floor

Kitchen / Dining room

3.94m x 5.89m 12'11" x 19'4"

Living room

3.82m x 4.35m 12'6" x 14'3"

First Floor

Bedroom 1

3.97m x 3.06m 13'0" x 10'1"

Bedroom 2

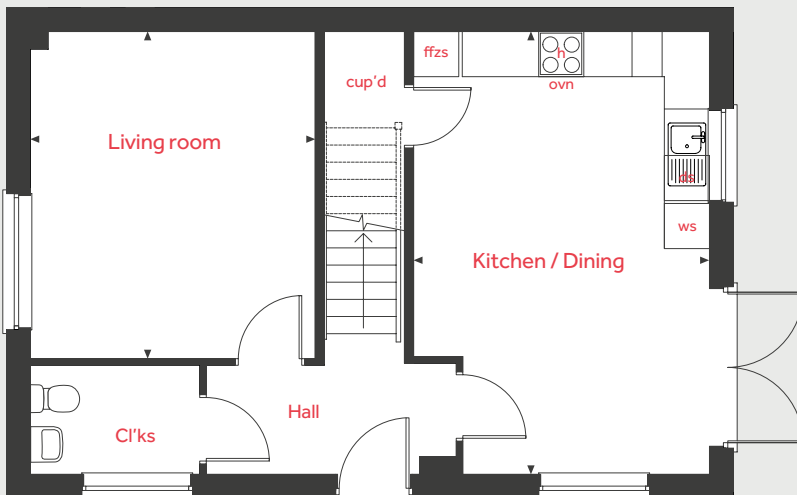
3.82m x 4.68m 12'6" x 15'4"

Bedroom 3

2.89m x 2.74m 9'6" x 9'0"

ovn	oven	ffzs	fridge freezer space
h	hob	cup'd	cupboard
ds	dishwasher space	< >	measuring points
ws	washing machine space		

Ground Floor



The illustrations shown are computer generated impressions of how the property may look and are indicative only. External details or finishes may vary on individual plots and homes may be built in either detached or attached styles depending on the development layout. Exact specifications, window styles and whether a property is left or right handed may differ from plot to plot. Please speak to our sales consultant for specific plot details.

The floorplan has been produced for illustrative purposes only. Room sizes shown are between arrow points as indicated on plan. The dimensions have tolerances of + or - 50mm and should not be used other than for general guidance. If specific dimensions are required, enquiries should be made to the sales consultant. The floor plans shown are not to scale. Measurements are based on the original drawings. Slight variations may occur during construction.

11.25

Linden
HOMES



The Sunflower II

3 bedroom home

Wilton Gate

Netherhampton Road, Harnham
Salisbury, Wiltshire, SP2 8FY | 0172 263 8969

lindenhomes.co.uk



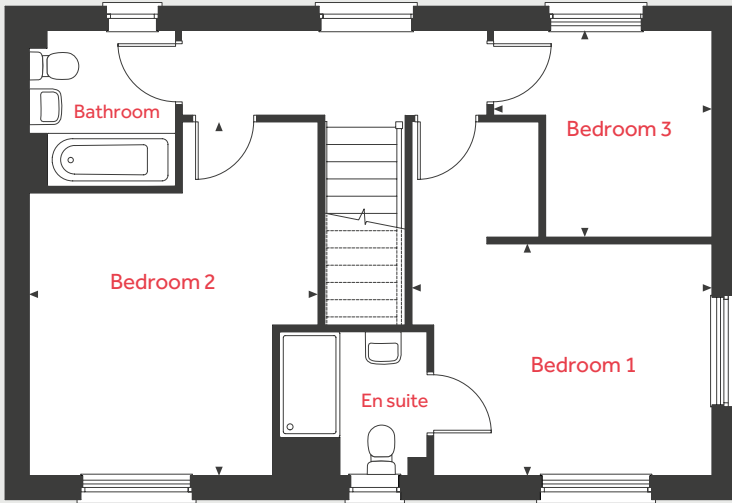
Linden
HOMES

The Sunflower II

3 bedroom home

Home 475, 480, 549 & 574

First Floor



Ground Floor

Kitchen / Dining room

3.94m x 5.89m 12'11" x 19'4"

Living room

3.82m x 4.35m 12'6" x 14'3"

First Floor

Bedroom 1

3.97m x 3.06m 13'0" x 10'1"

Bedroom 2

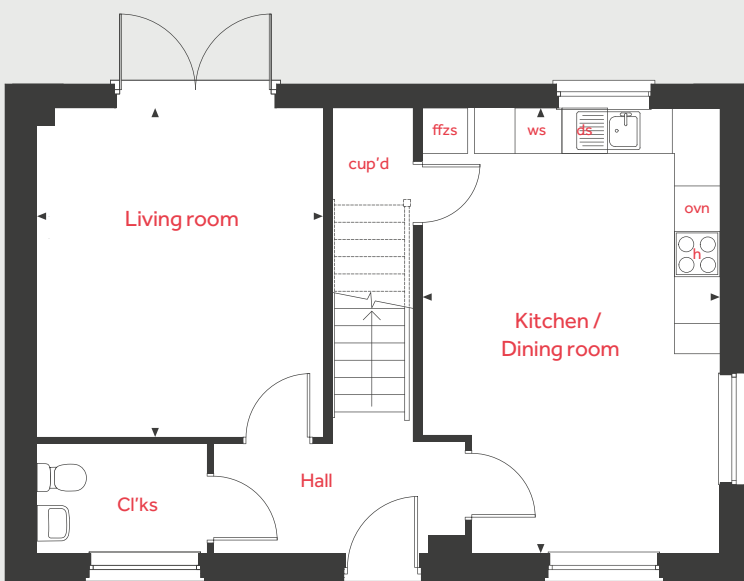
3.82m x 4.68m 12'6" x 15'4"

Bedroom 3

2.89m x 2.74m 9'6" x 9'0"

ovn	oven	ffzs	fridge freezer space
h	hob	cup'd	cupboard
ds	dishwasher space	< >	measuring points
ws	washing machine space		

Ground Floor



The illustrations shown are computer generated impressions of how the property may look and are indicative only. External details or finishes may vary on individual plots and homes may be built in either detached or attached styles depending on the development layout. Exact specifications, window styles and whether a property is left or right handed may differ from plot to plot. Please speak to our sales consultant for specific plot details.

The floorplan has been produced for illustrative purposes only. Room sizes shown are between arrow points as indicated on plan. The dimensions have tolerances of + or -50mm and should not be used other than for general guidance. If specific dimensions are required, enquiries should be made to the sales consultant. The floor plans shown are not to scale. Measurements are based on the original drawings. Slight variations may occur during construction.

11.25

Linden
HOMES



The Forget Me Not

3 bedroom home

Wilton Gate

Netherhampton Road, Harnham
Salisbury, Wiltshire, SP2 8FY | 0172 263 8969

lindenhomes.co.uk



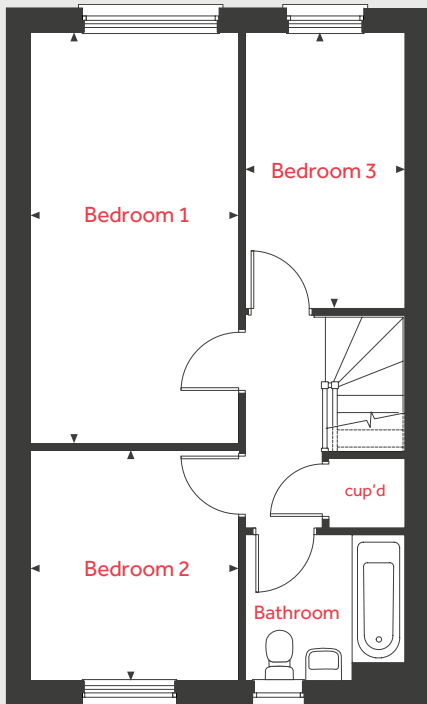
Linden
HOMES

The Forget Me Not

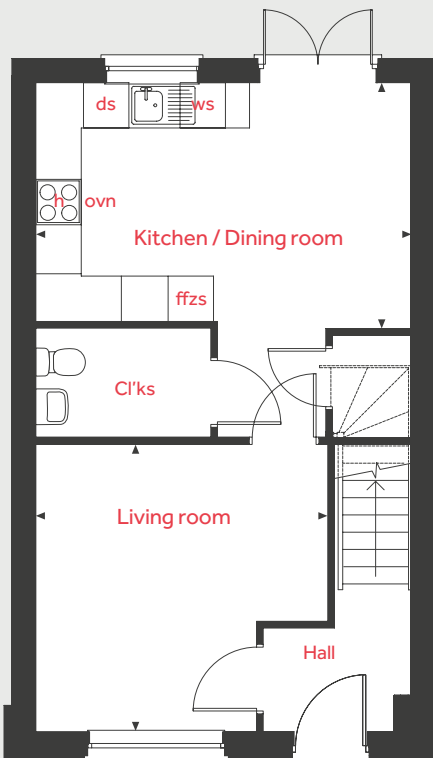
3 bedroom home

Homes 476, 477, 478, 479, 515,
543, 544, 568, 569, 570, 571,
572, 577, 578, 626, 627, 637,
638, 639 & 640

First Floor



Ground Floor



Ground Floor

Kitchen / Dining room

4.95m x 3.25m 16'3" x 10'8"

Living room

3.86m x 3.80m 12'8" x 12'6"

First Floor

Bedroom 1

2.75m x 5.44m 9'0" x 17'10"

Bedroom 2

2.75m x 3.05m 9'0" x 10'0"

Bedroom 3

2.11m x 3.65m 6'11" x 12'0"

ovn	oven	ffzs	fridge freezer space
h	hob	cup'd	cupboard
ds	dishwasher space	< >	measuring points
ws	washing machine space		

The illustrations shown are computer generated impressions of how the property may look and are indicative only. External details or finishes may vary on individual plots and homes may be built in either detached or attached styles depending on the development layout. Exact specifications, window styles and whether a property is left or right handed may differ from plot to plot. Please speak to our sales consultant for specific plot details.

The floorplan has been produced for illustrative purposes only. Room sizes shown are between arrow points as indicated on plan. The dimensions have tolerances of + or -50mm and should not be used other than for general guidance. If specific dimensions are required, enquiries should be made to the sales consultant. The floor plans shown are not to scale. Measurements are based on the original drawings. Slight variations may occur during construction.

11.25

Linden
HOMES



The Forget Me Not

3 bedroom home

Wilton Gate

Netherhampton Road, Harnham
Salisbury, Wiltshire, SP2 8FY | 0172 263 8969

lindenhomes.co.uk



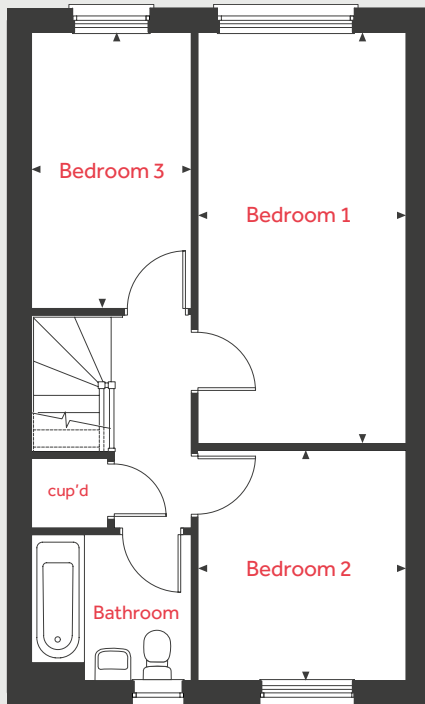
Linden
HOMES

The Forget Me Not

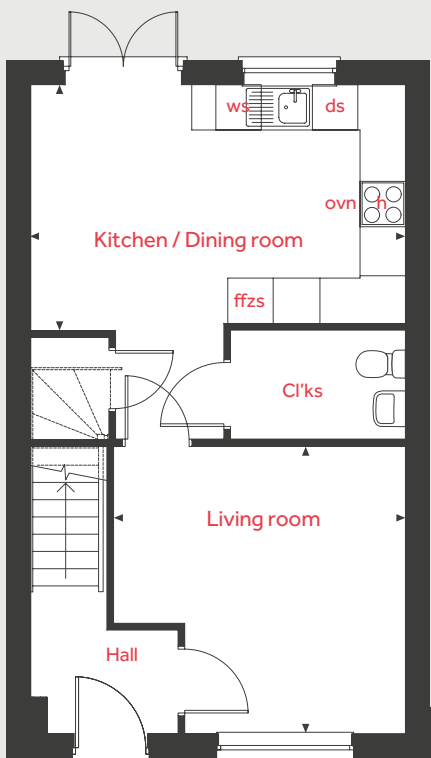
3 bedroom home

Homes 550, 551 & 595

First Floor



Ground Floor



Ground Floor

Kitchen / Dining room

4.95m x 3.25m 16'3" x 10'8"

Living room

3.86m x 3.80m 12'8" x 12'6"

First Floor

Bedroom 1

2.75m x 5.44m 9'0" x 17'10"

Bedroom 2

2.75m x 3.05m 9'0" x 10'0"

Bedroom 3

2.11m x 3.65m 6'11" x 12'0"

ovn	oven	ffzs	fridge freezer space
h	hob	cup'd	cupboard
ds	dishwasher space	< >	measuring points
ws	washing machine space		

The illustrations shown are computer generated impressions of how the property may look and are indicative only. External details or finishes may vary on individual plots and homes may be built in either detached or attached styles depending on the development layout. Exact specifications, window styles and whether a property is left or right handed may differ from plot to plot. Please speak to our sales consultant for specific plot details.

The floorplan has been produced for illustrative purposes only. Room sizes shown are between arrow points as indicated on plan. The dimensions have tolerances of + or - 50mm and should not be used other than for general guidance. If specific dimensions are required, enquiries should be made to the sales consultant. The floor plans shown are not to scale. Measurements are based on the original drawings. Slight variations may occur during construction.

11.25

Linden
HOMES



The Lavender

4 bedroom home

Wilton Gate

Netherhampton Road, Harnham
Salisbury, Wiltshire, SP2 8FY | 0172 263 8969

lindenhomes.co.uk



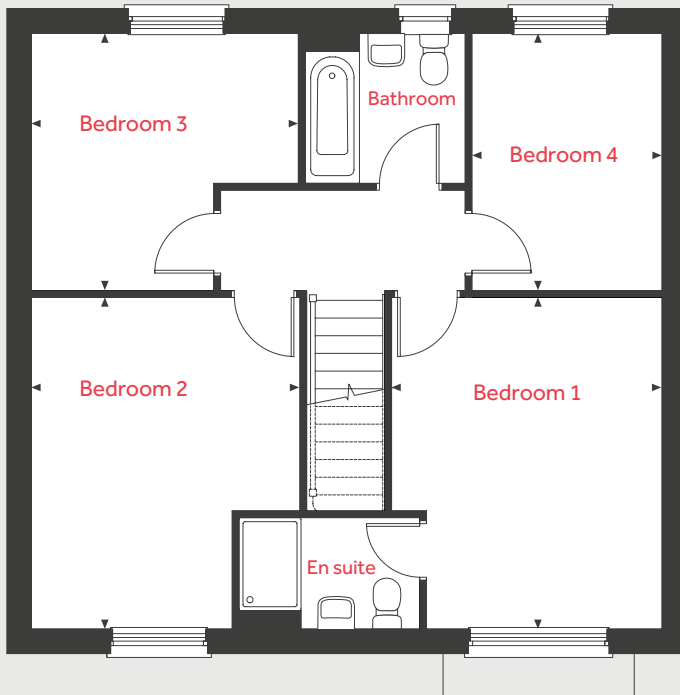
Linden
HOMES

The Lavender

4 bedroom home

Homes 601, 612, 614,
616 & 628

First Floor



Ground Floor

Kitchen / Dining / Family room

8.13m x 3.29m 26'8" x 10'10"

Living room

3.46m x 4.27m 11'4" x 14'0"

Study

2.30m x 1.80m 7'7" x 5'11"

First Floor

Bedroom 1

3.49m x 4.27m 11'5" x 14'0"

Bedroom 2

3.46m x 4.27m 11'4" x 14'0"

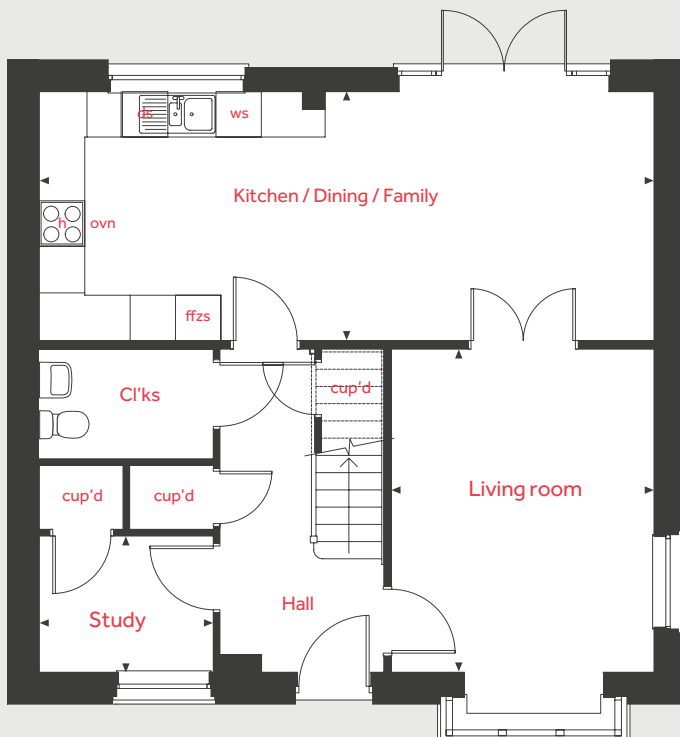
Bedroom 3

3.44m x 3.29m 11'3" x 10'10"

Bedroom 4

2.45m x 3.32m 8'0" x 10'11"

Ground Floor



ovn	oven	ffzs	fridge freezer space
h	hob	cup'd	cupboard
ds	dishwasher space	< >	measuring points
ws	washing machine space		

The illustrations shown are computer generated impressions of how the property may look and are indicative only. External details or finishes may vary on individual plots and homes may be built in either detached or attached styles depending on the development layout. Exact specifications, window styles and whether a property is left or right handed may differ from plot to plot. Please speak to our sales consultant for specific plot details.

The floorplan has been produced for illustrative purposes only. Room sizes shown are between arrow points as indicated on plan. The dimensions have tolerances of + or - 50mm and should not be used other than for general guidance. If specific dimensions are required, enquiries should be made to the sales consultant. The floor plans shown are not to scale. Measurements are based on the original drawings. Slight variations may occur during construction.

11.25

Linden
HOMES



The Dahlia

4 bedroom home

Wilton Gate

Netherhampton Road, Harnham
Salisbury, Wiltshire, SP2 8FY | 0172 263 8969

lindenhomes.co.uk



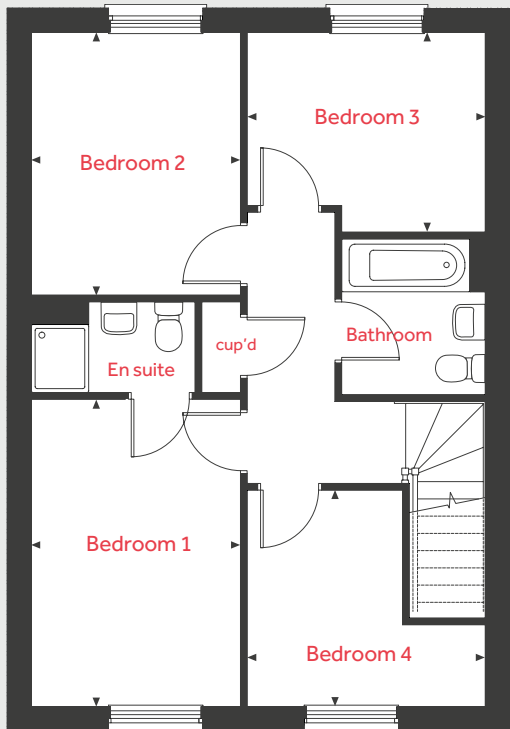
Linden
HOMES

The Dahlia

4 bedroom home

Homes 597, 598, 610 & 611

First Floor



Ground Floor

Kitchen / Dining room

6.00m x 3.54m 19'8" x 11'7"

Living room

3.34m x 5.26m 10'11" x 17'3"

First Floor

Bedroom 1

2.77m x 4.06m 9'1" x 13'4"

Bedroom 2

2.78m x 3.48m 9'1" x 11'5"

Bedroom 3

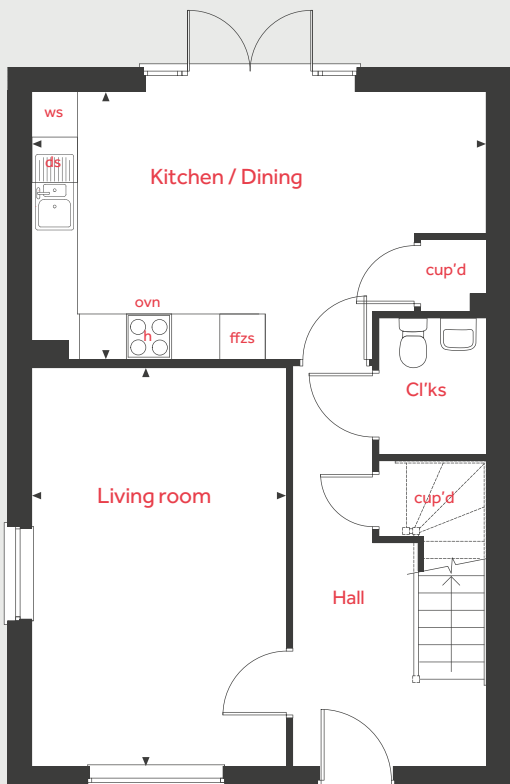
3.15m x 2.64m 10'4" x 8'8"

Bedroom 4

3.15m x 2.88m 10'4" x 9'5"

ovn	oven	ffzs	fridge freezer space
h	hob	cup'd	cupboard
ds	dishwasher space	< >	measuring points
ws	washing machine space		

Ground Floor



The illustrations shown are computer generated impressions of how the property may look and are indicative only. External details or finishes may vary on individual plots and homes may be built in either detached or attached styles depending on the development layout. Exact specifications, window styles and whether a property is left or right handed may differ from plot to plot. Please speak to our sales consultant for specific plot details.

The floorplan has been produced for illustrative purposes only. Room sizes shown are between arrow points as indicated on plan. The dimensions have tolerances of + or - 50mm and should not be used other than for general guidance. If specific dimensions are required, enquiries should be made to the sales consultant. The floor plans shown are not to scale. Measurements are based on the original drawings. Slight variations may occur during construction.

11.25

Linden
HOMES



The Hyacinth

4 bedroom home

Wilton Gate

Netherhampton Road, Harnham
Salisbury, Wiltshire, SP2 8FY | 0172 263 8969

[lindenhomes.co.uk](https://www.lindenhomes.co.uk)



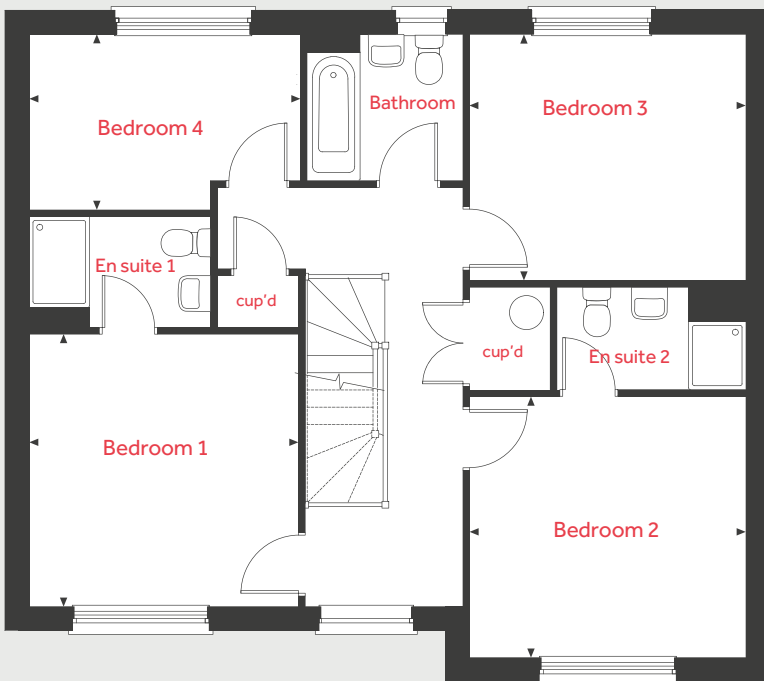
Linden
HOMES

The Hyacinth

4 bedroom home

Homes 600, 602, 606,
607 & 613

First Floor



Ground Floor

Kitchen / Family / Dining room

9.48m x 3.75m 31'1" x 12'4"

Living room

3.65m x 4.38m 12'0" x 14'4"

Study

2.03m x 1.82m 6'8" x 6'0"

First Floor

Bedroom 1

3.56m x 3.60m 11'8" x 11'10"

Bedroom 2

3.65m x 3.46m 12'0" x 11'4"

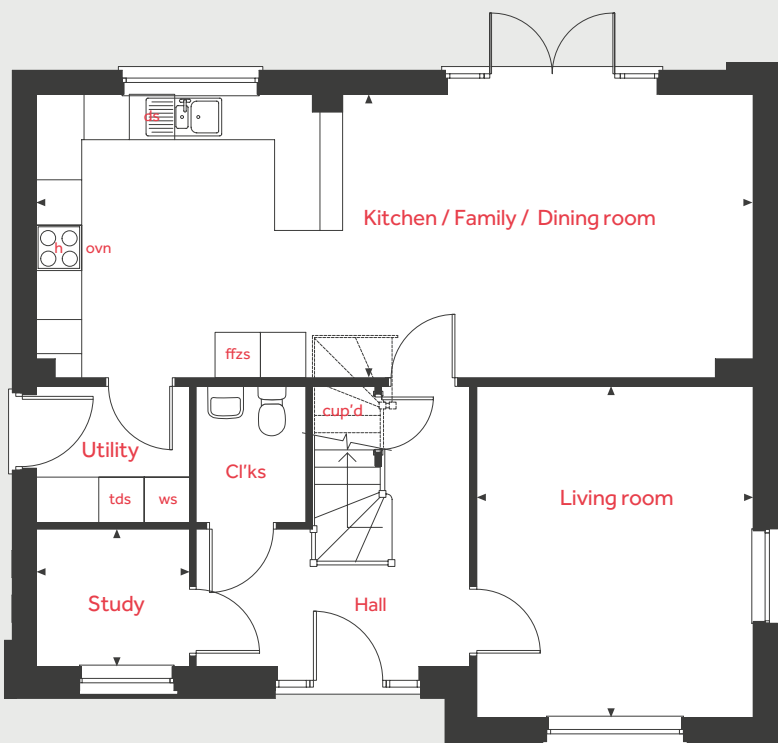
Bedroom 3

3.65m x 3.26m 12'0" x 10'8"

Bedroom 4

3.59m x 2.32m 11'9" x 7'7"

Ground Floor



ovn	oven	ffzs	fridge freezer space
h	hob	cup'd	cupboard
ds	dishwasher space	tds	tumbled dryer space
ws	washing machine space	< >	measuring points

The illustrations shown are computer generated impressions of how the property may look and are indicative only. External details or finishes may vary on individual plots and homes may be built in either detached or attached styles depending on the development layout. Exact specifications, window styles and whether a property is left or right handed may differ from plot to plot. Please speak to our sales consultant for specific plot details.

The floorplan has been produced for illustrative purposes only. Room sizes shown are between arrow points as indicated on plan. The dimensions have tolerances of + or -50mm and should not be used other than for general guidance. If specific dimensions are required, enquiries should be made to the sales consultant. The floor plans shown are not to scale. Measurements are based on the original drawings. Slight variations may occur during construction.

11.25

Linden
HOMES



The Lupin

4 bedroom home

Wilton Gate

Netherhampton Road, Harnham
Salisbury, Wiltshire, SP2 8FY | 0172 263 8969

lindenhomes.co.uk



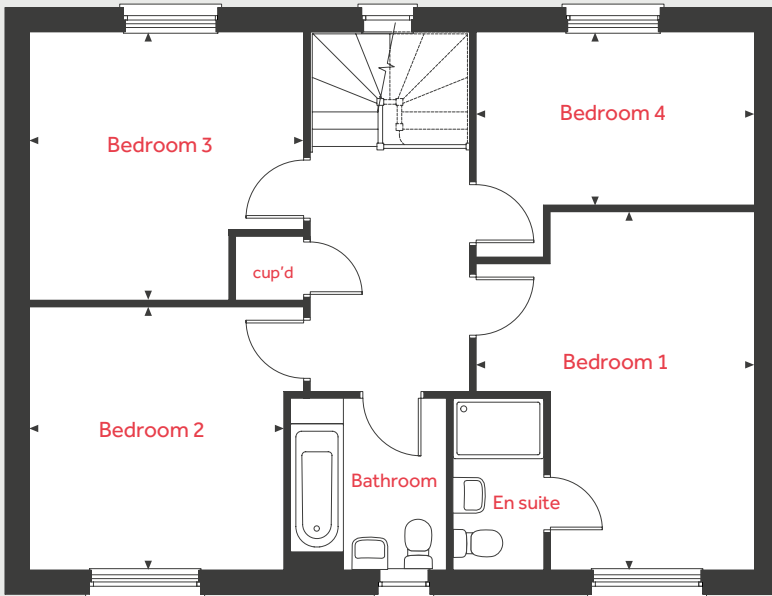
Linden
HOMES

The Lupin

4 bedroom home

Homes 605, 615, & 620

First Floor



Ground Floor

Kitchen / Dining room

3.63m x 7.12m 11'11" x 23'4"

Living room

3.66m x 4.74m 12'0" x 15'7"

Study

2.89m x 2.29m 9'6" x 7'6"

First Floor

Bedroom 1

3.67m x 4.74m 12'0" x 15'7"

Bedroom 2

3.37m x 3.48m 11'1" x 11'5"

Bedroom 3

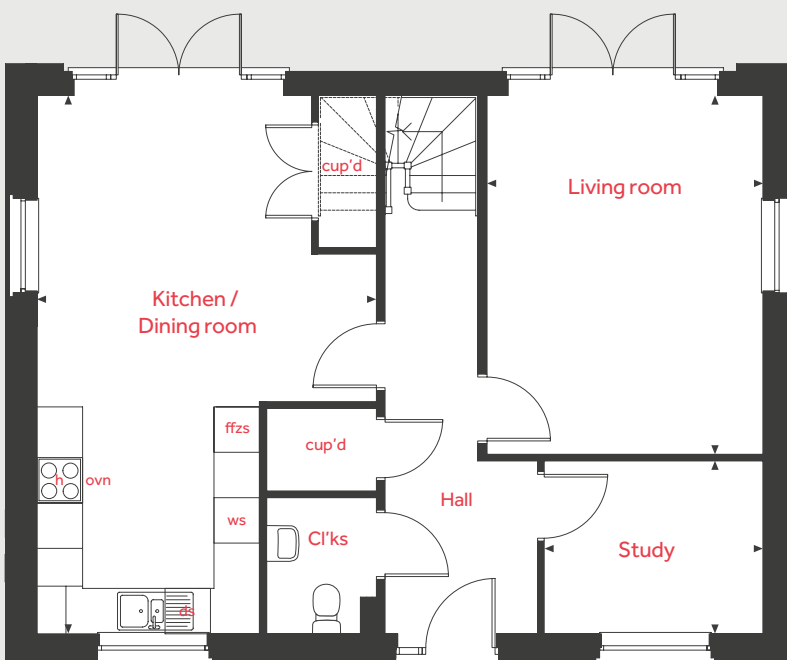
3.63m x 3.55m 11'11" x 11'8"

Bedroom 4

3.68m x 2.29m 12'1" x 7'6"

ovn	oven	ffzs	fridge freezer space
h	hob	cup'd	cupboard
ds	dishwasher space	< >	measuring points
ws	washing machine space		

Ground Floor



The illustrations shown are computer generated impressions of how the property may look and are indicative only. External details or finishes may vary on individual plots and homes may be built in either detached or attached styles depending on the development layout. Exact specifications, window styles and whether a property is left or right handed may differ from plot to plot. Please speak to our sales consultant for specific plot details.

The floorplan has been produced for illustrative purposes only. Room sizes shown are between arrow points as indicated on plan. The dimensions have tolerances of + or -50mm and should not be used other than for general guidance. If specific dimensions are required, enquiries should be made to the sales consultant. The floor plans shown are not to scale. Measurements are based on the original drawings. Slight variations may occur during construction.

11.25

Linden
HOMES