

Manor View

East Grinstead, West Sussex



Linden
HOMES



Manor View East Grinstead, West Sussex

A fabulous collection of 1 & 2 bedroom apartments and 2, 3, 4 & 5 bedroom houses.

Manor View is a fabulous new development of houses and apartments, conveniently situated off Turners Hill Road, adjacent to open countryside, yet only a mile from East Grinstead town centre. Situated on the edge of Ashdown Forest, halfway between London and the south coast and on the Greenwich Meridian, this historic West Sussex market town is a great place for young professionals and families alike. With good schools, shops, cafés, pubs and restaurants, a range of sport and leisure facilities, plus great transport links, East Grinstead is a thriving community with plenty to offer and Manor View is the perfect spot to enjoy it all.

With easy access to the High Weald Area of Natural Beauty, a host of charming villages and country towns, plus fine heritage sites and visitor attractions, you'll be spoilt for choice for great family days out. Manor View is only 7 miles from Junction 10 of the M23, affording easy access south to Brighton and north to the M25, while Gatwick Airport is just 10 miles away. East Grinstead train station is under a mile away, providing regular services to London Bridge (51 mins) and London Victoria (56 mins). From East Grinstead, you can also board the famous Bluebell Railway, for a scenic journey to Sheffield Park by steam train.

Manor View

West Sussex RH19 4LX | 01342 590 144

lindenhomes.co.uk

Linden
HOMES



Bluebell
Railway Line

LAP

LAP



Development layout



5 bedroom home

- The Fletcher

4 bedroom home

- The Aldridge
- The Mylne
- The Pembroke
- The Cottingham

3 bedroom home

- The Elmslie
- The Becket

2 bedroom home

- The Vale

1 bedroom home

- The Ardingly
- The Balcombe

1 & 2 bedroom apartments

- Hartfield House

Affordable Housing *

- 1 bedroom homes
- 2 bedroom homes
- 3 bedroom homes
- 4 bedroom homes

LAP Local Area of Play V Visitor Parking Space
Bin Store

Not to scale. Trees and landscaping are indicative only and may alter during construction. The trees, shrubs and gardens shown are illustrative only. Finishes and materials may vary from those shown here. Please ask your Sales Executive for specific details.

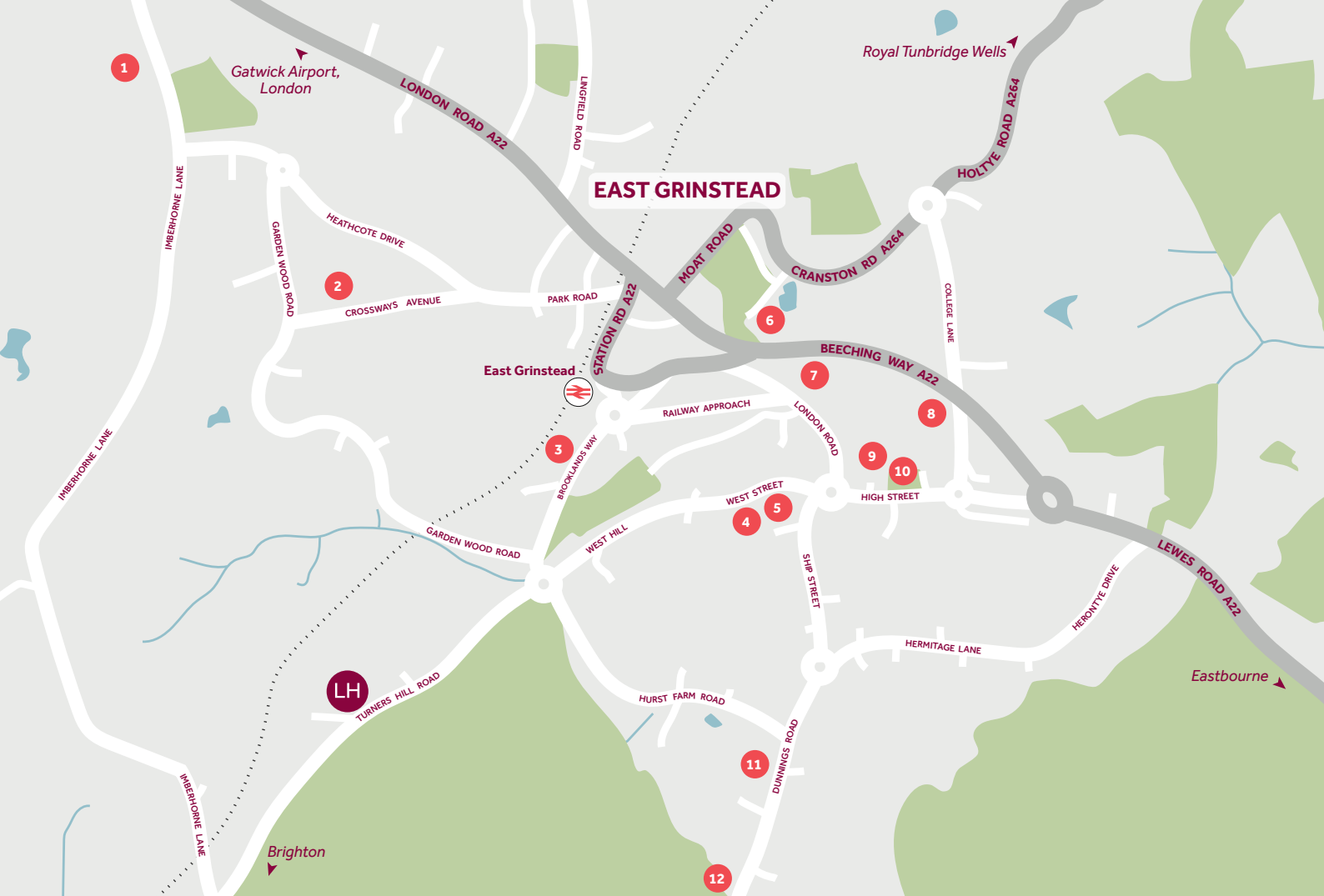
Development layout



- 5 bedroom home**
 - The Fletcher
- 4 bedroom home**
 - The Aldridge
 - The Mylne
 - The Pembroke
 - The Cottingham
- 3 bedroom home**
 - The Elmslie
 - The Becket
- 2 bedroom home**
 - The Vale
- 1 bedroom home**
 - The Ardingly
 - The Balcombe
- 1 & 2 bedroom apartments**
 - Hartfield House
- Affordable Housing ***
 - 1 bedroom homes
 - 2 bedroom homes
 - 3 bedroom homes
 - 4 bedroom homes

LAP Local Area of Play V Visitor Parking Space
Bin Store

Not to scale. Trees and landscaping are indicative only and may alter during construction. The trees, shrubs and gardens shown are illustrative only. Finishes and materials may vary from those shown here. Please ask your Sales Executive for specific details.



Around the local neighbourhood

1 Imberhorne School
(Mixed Secondary)

2 St Peter's Catholic
Primary School

3 Sainsbury's

4 Waitrose & Partners

5 East Grinstead
Library

6 Kings Centre (Leisure Centre/
Swimming Pool)

7 Scott Cinemas
East Grinstead

8 Chequer Mead
Theatre

9 East Grinstead
Museum

10 St Swithun's
Church

11 The Meads
Primary School

12 The Old Dunning's Mill
(Public House)

Distances shown are by road (Source: Google). Fastest journey times are shown (Source: National Rail Enquiries).
December 2021.

lindenhomes.co.uk

Linden
HOMES



The Balcombe 1 bedroom home

Manor View

West Sussex RH19 4LX | 01342 590 144

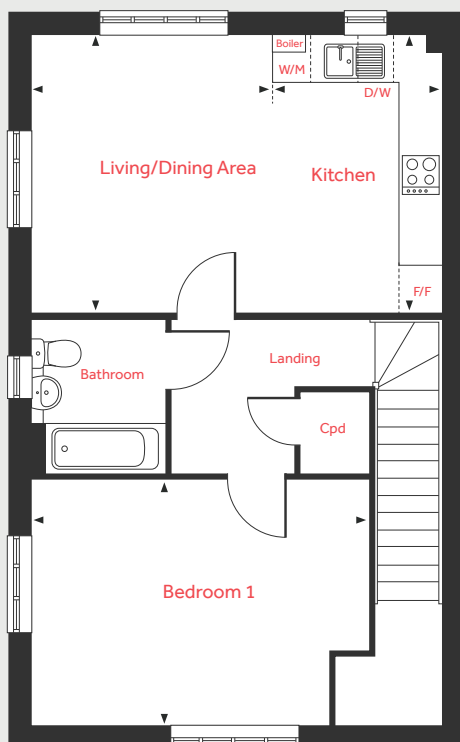
lindenhomes.co.uk

Linden
HOMES

The Balcombe

1 bedroom home

First Floor



Ground Floor Apartments 125 & 165

Living/Dining Area

3.90m x 3.45m 12'10" x 11'4"

Kitchen

3.90m x 2.43m 12'10" x 8'0"

Bedroom 1

4.58m x 3.50m 15'0" x 11'6"

First Floor Apartments 126 & 166

Living/Dining Area

3.95m x 3.45m 13'0" x 11'4"

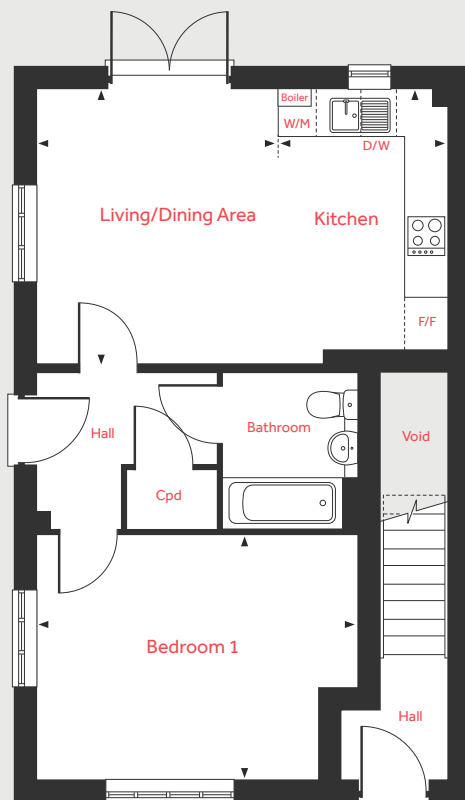
Kitchen

3.95m x 2.43m 13'0" x 8'0"

Bedroom 1

4.83m x 3.50m 15'10" x 11'6"

Ground Floor



F/F	Space for fridge freezer	Cpd	Cupboard
W/M	Space for washing machine	◀ ▶	Measuring points
D/W	Space for dishwasher		

Please note, floorplans and dimensions are taken from architectural drawings and are for guidance only. Dimensions stated are within a tolerance of plus or minus 50mm. Overall dimensions are usually stated and there may be projections into these. With our continual improvement policy we constantly review our designs and specification to ensure we deliver the best product to our customers. Computer generated images not to scale. Finishes and materials may vary and landscaping is illustrative only. Kitchen layouts are indicative only and may change. To confirm specific details on our homes please ask your Sales Consultant. December 2021.

Linden
HOMES



The Ardingly 1 bedroom home

Manor View

West Sussex RH19 4LX | 01342 590 144

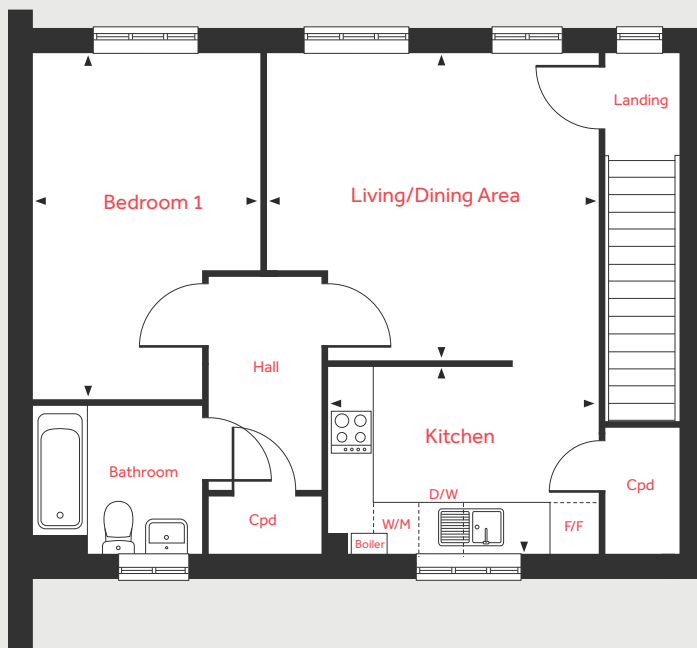
lindenhomes.co.uk

Linden
HOMES

The Ardingly

1 bedroom home

First Floor



Ground Floor Apartment 167

Living/Dining Area

4.24m x 4.06m 13'11" x 13'4"

Kitchen

3.33m x 2.44m 10'11" x 8'0"

Bedroom 1

4.57m x 2.96m 15'0" x 9'9"

First Floor Apartment 168

Living/Dining Area

4.39m x 4.06m 14'5" x 13'4"

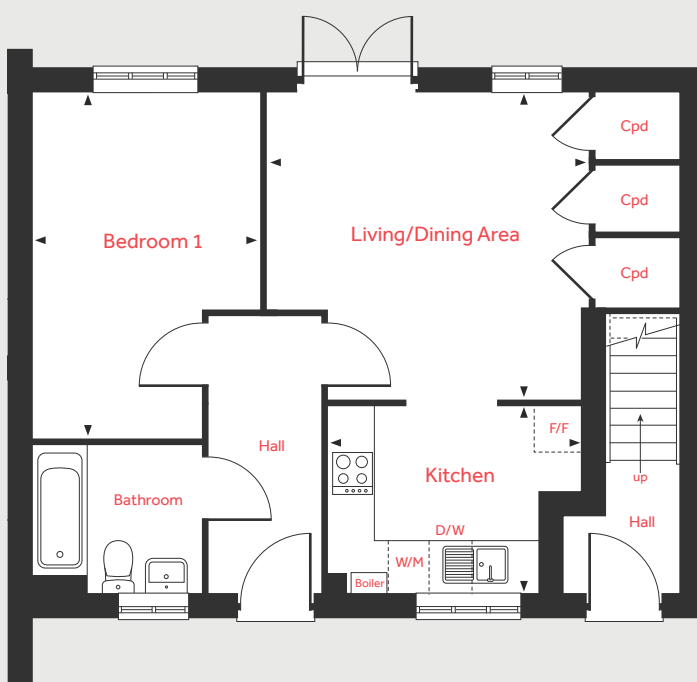
Kitchen

3.59m x 2.44m 11'9" x 8'0"

Bedroom 1

4.57m x 2.96m 15'0" x 9'9"

Ground Floor



F/F	Space for fridge freezer	Cpd	Cupboard
W/M	Space for washing machine	◀ ▶	Measuring points
D/W	Space for dishwasher		

Please note, floorplans and dimensions are taken from architectural drawings and are for guidance only. Dimensions stated are within a tolerance of plus or minus 50mm. Overall dimensions are usually stated and there may be projections into these. With our continual improvement policy we constantly review our designs and specification to ensure we deliver the best product to our customers. Computer generated images not to scale. Finishes and materials may vary and landscaping is illustrative only. Kitchen layouts are indicative only and may change. To confirm specific details on our homes please ask your Sales Consultant. December 2021.

Linden

HOMES



The Vale 2 bedroom home

Manor View

West Sussex RH19 4LX | 01342 590 144

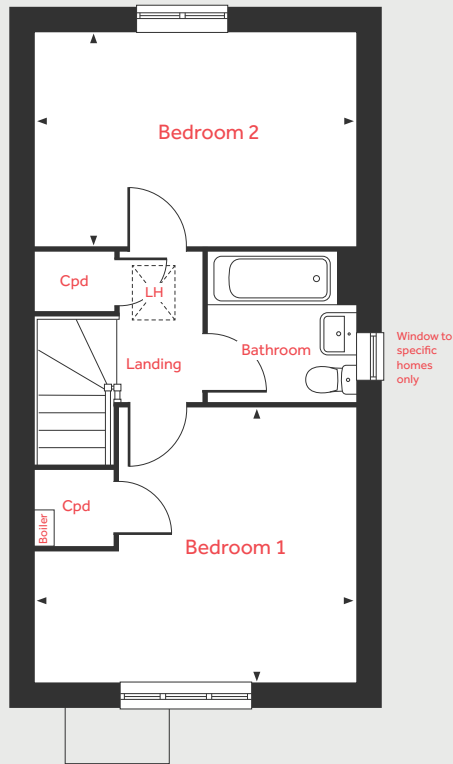
lindenhomes.co.uk

Linden
HOMES

The Vale

2 bedroom home

First Floor



Ground Floor

Living Room

4.53m x 3.10m 14'11" x 10'2"

Kitchen/Dining Area

4.19m x 2.75m 13'9" x 9'1"

First Floor

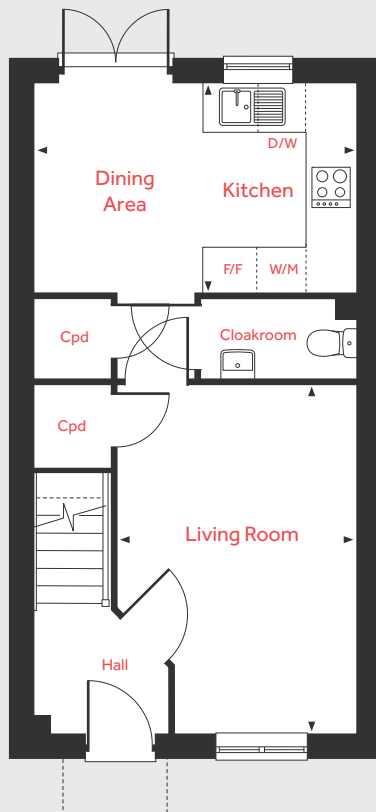
Bedroom 1

4.19m x 3.58m 13'9" x 11'9"

Bedroom 2

4.19m x 2.80m 13'9" x 9'2"

Ground Floor



F/F	Space for fridge freezer	Cpd	Cupboard
W/M	Space for washing machine	LH	Loft hatch
D/W	Space for dishwasher	◀ ▶	Measuring points

Please note, floorplans and dimensions are taken from architectural drawings and are for guidance only. Dimensions stated are within a tolerance of plus or minus 50mm. Overall dimensions are usually stated and there may be projections into these. With our continual improvement policy we constantly review our designs and specification to ensure we deliver the best product to our customers. Computer generated images not to scale. Finishes and materials may vary and landscaping is illustrative only. Kitchen layouts are indicative only and may change. To confirm specific details on our homes please ask your Sales Consultant. December 2021.

Linden
HOMES



The Elmslie 3 bedroom home

Manor View

West Sussex RH19 4LX | 01342 590 144

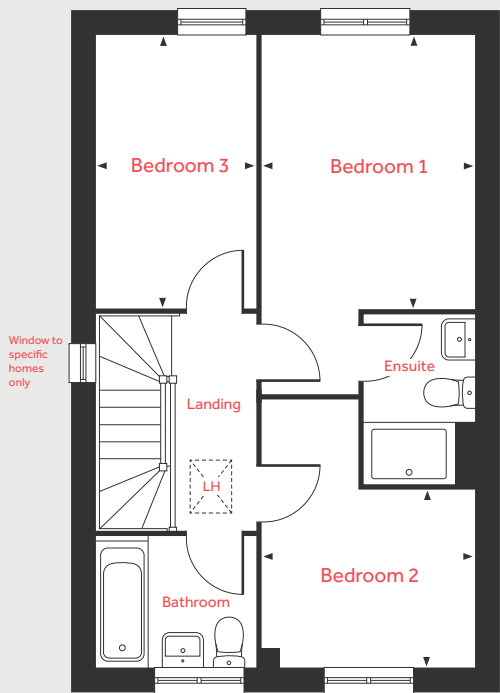
lindenhomes.co.uk

Linden
HOMES

The Elmslie

3 bedroom home

First Floor



Ground Floor

Living Room
5.09m x 3.65m 16'8" x 12'0"

Kitchen/Dining Area
4.78m x 2.91m 15'8" x 9'6"

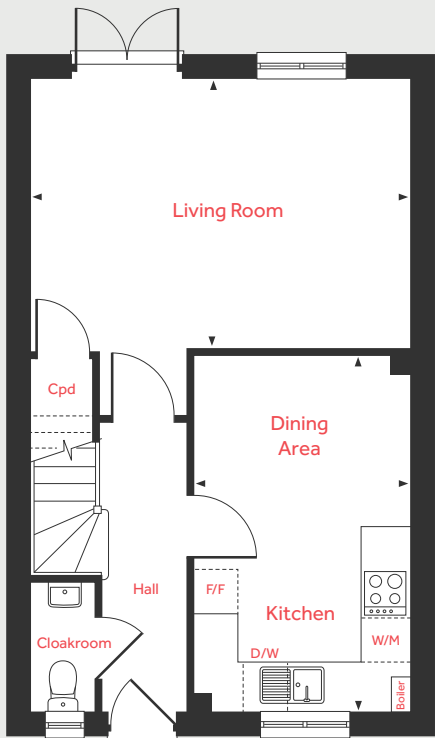
First Floor

Bedroom 1
3.67m x 2.87m 12'1" x 9'5"

Bedroom 2
2.87m x 2.40m 9'5" x 7'10"

Bedroom 3
3.65m x 2.15m 12'0" x 7'0"

Ground Floor



F/F	Space for fridge freezer	Cpd	Cupboard
W/M	Space for washing machine	LH	Loft hatch
D/W	Space for dishwasher	◀ ▶	Measuring points

Please note, floorplans and dimensions are taken from architectural drawings and are for guidance only. Dimensions stated are within a tolerance of plus or minus 50mm. Overall dimensions are usually stated and there may be projections into these. With our continual improvement policy we constantly review our designs and specification to ensure we deliver the best product to our customers. Computer generated images not to scale. Finishes and materials may vary and landscaping is illustrative only. Kitchen layouts are indicative only and may change. To confirm specific details on our homes please ask your Sales Consultant. December 2021.

Linden
HOMES



The Becket 3 bedroom home

Manor View

West Sussex RH19 4LX | 01342 590 144

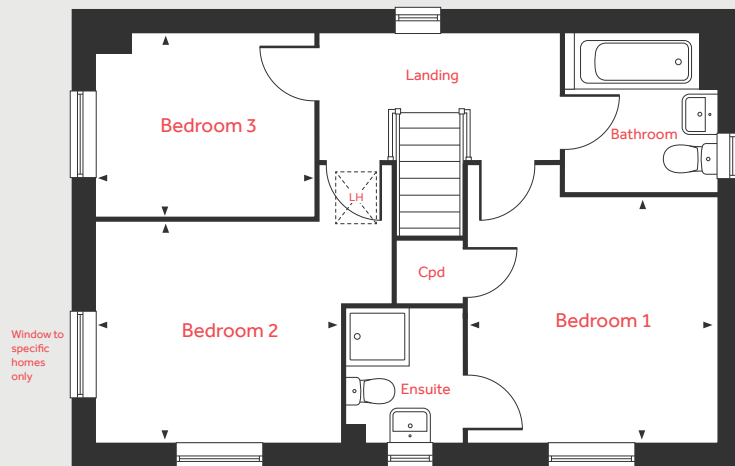
lindenhomes.co.uk

Linden
HOMES

The Becket

3 bedroom home

First Floor



Ground Floor

Living Room

5.59m x 3.33m 18'4" x 10'11"

Kitchen/Dining Area

5.59m x 2.93m 18'4" x 9'7"

First Floor

Bedroom 1

3.40m x 3.36m 11'2" x 11'0"

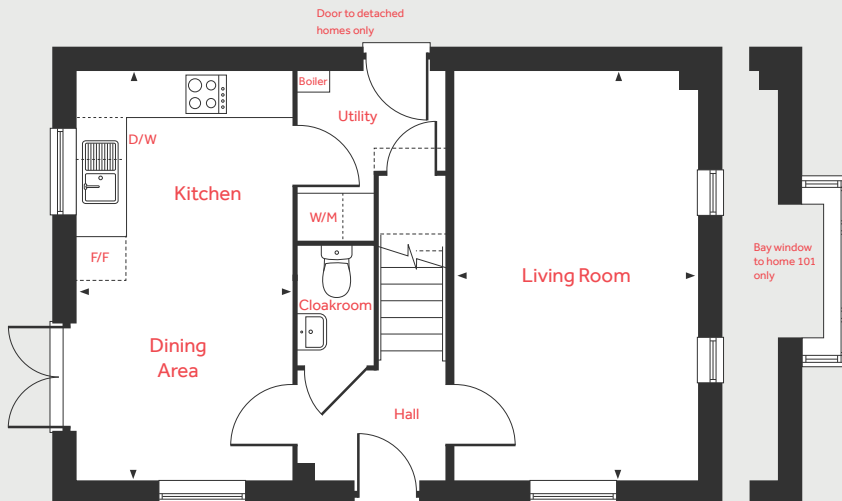
Bedroom 2

3.38m x 3.00m 11'1" x 9'10"

Bedroom 3

2.99m x 2.51m 9'10" x 8'2"

Ground Floor



F/F	Space for fridge freezer	Cpd	Cupboard
W/M	Space for washing machine	LH	Loft hatch
D/W	Space for dishwasher	◀ ▶	Measuring points

Please note, floorplans and dimensions are taken from architectural drawings and are for guidance only. Dimensions stated are within a tolerance of plus or minus 50mm. Overall dimensions are usually stated and there may be projections into these. With our continual improvement policy we constantly review our designs and specification to ensure we deliver the best product to our customers. Computer generated images not to scale. Finishes and materials may vary and landscaping is illustrative only. Kitchen layouts are indicative only and may change. To confirm specific details on our homes please ask your Sales Consultant. December 2021.

Linden

HOMES



The Aldridge

4 bedroom home

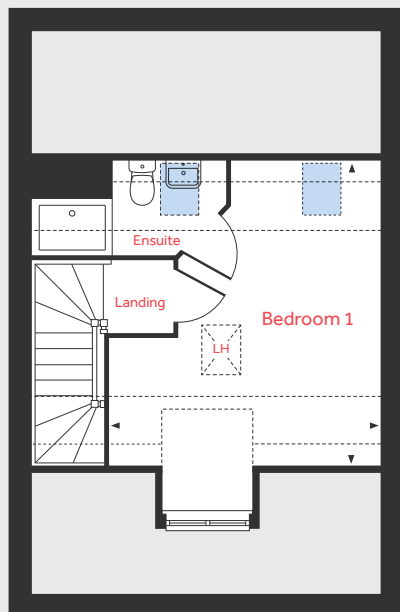
Manor View

West Sussex RH19 4LX | 01342 590 144

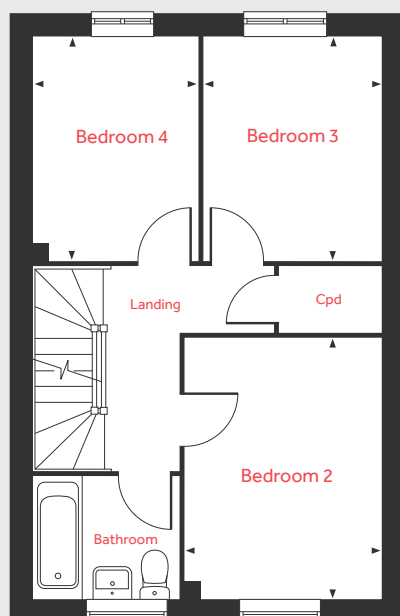
lindenhomes.co.uk

Linden
HOMES

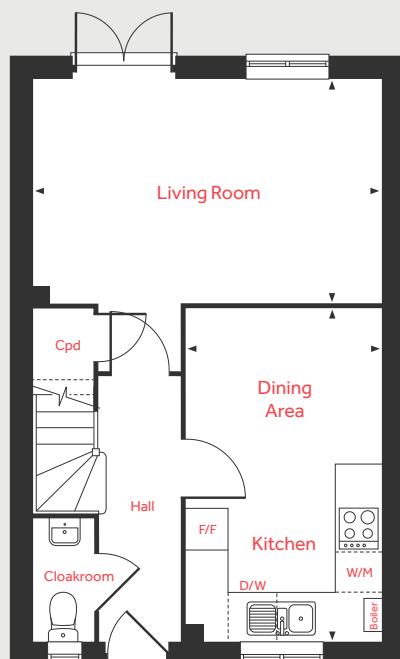
Second Floor



First Floor



Ground Floor



The Aldridge

4 bedroom home

Ground Floor

Living Room

4.98m x 3.20m 16'4" x 10'6"

Kitchen/Dining Area

4.78m x 2.80m 15'8" x 9'2"

First Floor

Bedroom 2

3.76m x 2.80m 12'4" x 9'2"

Bedroom 3

3.20m x 2.53m 10'6" x 8'3"

Bedroom 4

3.20m x 2.37m 10'6" x 7'9"

Second Floor

Bedroom 1

4.42m x 3.89m 14'6" x 12'9"

F/F	Integrated fridge freezer	LH	Loft hatch
W/M	Space for washing machine	Velux window location	
D/W	Space for dishwasher	Restricted ceiling height	
Cpd	Cupboard	Measuring points	

Please note, floorplans and dimensions are taken from architectural drawings and are for guidance only. Dimensions stated are within a tolerance of plus or minus 50mm. Overall dimensions are usually stated and there may be projections into these. With our continual improvement policy we constantly review our designs and specification to ensure we deliver the best product to our customers. Computer generated images not to scale. Finishes and materials may vary and landscaping is illustrative only. Kitchen layouts are indicative only and may change. To confirm specific details on our homes please ask your Sales Consultant. December 2021.

Linden

HOMES



The Mylne 4 bedroom home

Manor View

West Sussex RH19 4LX | 01342 590 144

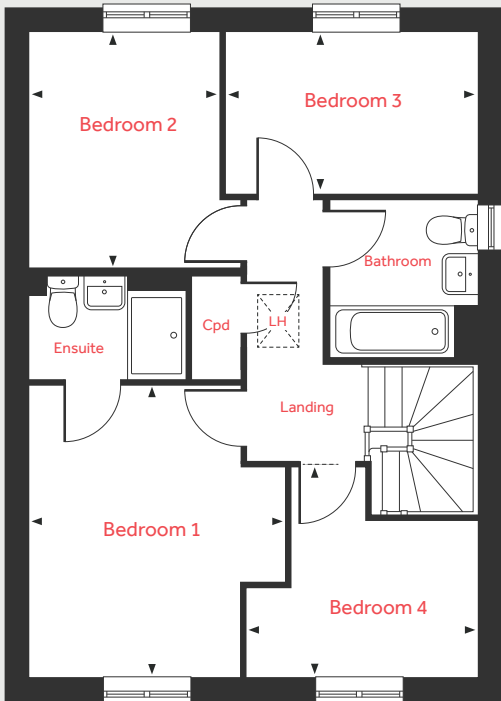
lindenhomes.co.uk

Linden
HOMES

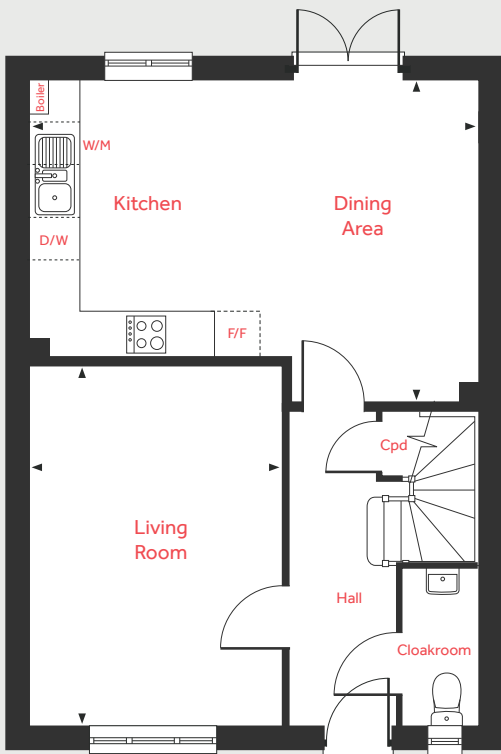
The Mylne

4 bedroom home

First Floor



Ground Floor



Ground Floor

Living Room	4.83m x 3.39m	15'10" x 11'1"
Kitchen/Dining Area	6.04m x 4.37m	19'9" x 14'4"

First Floor

Bedroom 1	3.95m x 3.46m	13'0" x 11'4"
Bedroom 2	3.20m x 2.57m	10'6" x 8'5"
Bedroom 3	3.39m x 2.21m	11'1" x 7'3"
Bedroom 4	3.10m x 2.82m	10'2" x 9'3"

F/F	Integrated fridge freezer	Cpd	Cupboard
W/M	Space for washing machine	LH	Loft hatch
D/W	Space for dishwasher	◀ ▶	Measuring points

Please note, floorplans and dimensions are taken from architectural drawings and are for guidance only. Dimensions stated are within a tolerance of plus or minus 50mm. Overall dimensions are usually stated and there may be projections into these. With our continual improvement policy we constantly review our designs and specification to ensure we deliver the best product to our customers. Computer generated images not to scale. Finishes and materials may vary and landscaping is illustrative only. Kitchen layouts are indicative only and may change. To confirm specific details on our homes please ask your Sales Consultant. December 2021.



The Pembroke 4 bedroom home

Manor View

West Sussex RH19 4LX | 01342 590 144

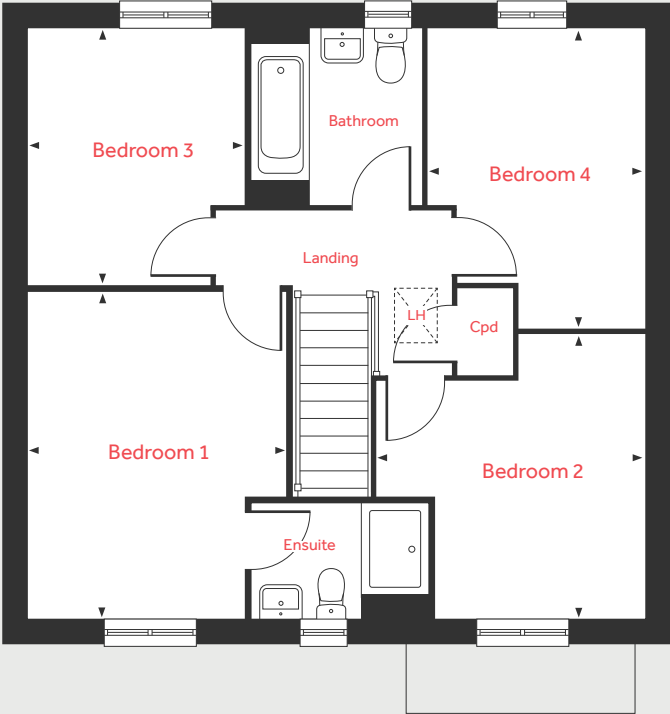
lindenhomes.co.uk

Linden
HOMES

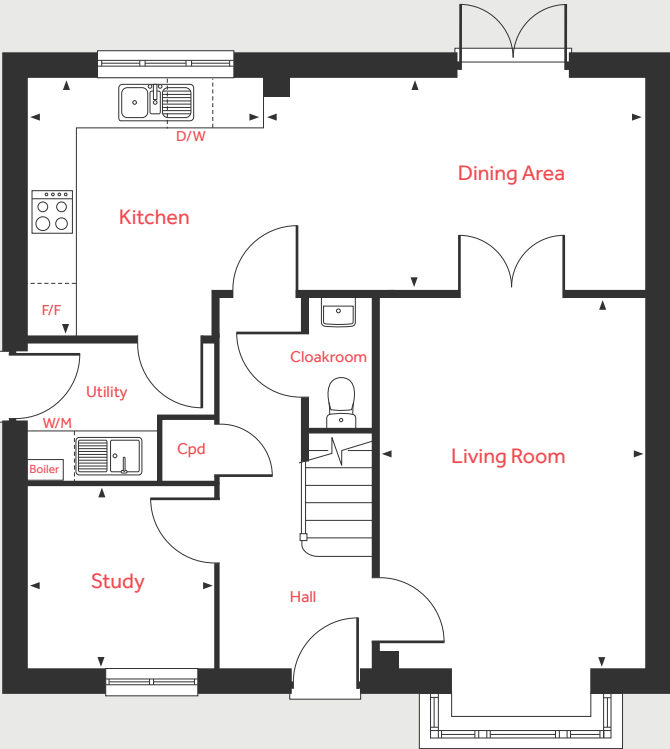
The Pembroke

4 bedroom home

First Floor



Ground Floor



Ground Floor

Living Room	4.83m x 3.50m	15'10" x 11'5"
Kitchen	3.34m x 3.05m	11'0" x 10'0"
Dining Area	5.01m x 2.74m	16'5" x 9'0"
Study	2.41m x 2.37m	7'11" x 7'9"

First Floor

Bedroom 1	4.29m x 3.40m	14'1" x 11'2"
Bedroom 2	3.72m x 3.50m	12'2" x 11'5"
Bedroom 3	3.35m x 2.88m	11'0" x 9'5"
Bedroom 4	3.92m x 2.82m	12'10" x 9'3"

F/F	Integrated fridge freezer	Cpd	Cupboard
W/M	Space for washing machine	LH	Loft hatch
D/W	Space for dishwasher	◀ ▶	Measuring points

Please note, floorplans and dimensions are taken from architectural drawings and are for guidance only. Dimensions stated are within a tolerance of plus or minus 50mm. Overall dimensions are usually stated and there may be projections into these. With our continual improvement policy we constantly review our designs and specification to ensure we deliver the best product to our customers. Computer generated images not to scale. Finishes and materials may vary and landscaping is illustrative only. Kitchen layouts are indicative only and may change. To confirm specific details on our homes please ask your Sales Consultant. December 2021.



The Cottingham

4 bedroom home

Manor View

West Sussex RH19 4LX | 01342 590 144

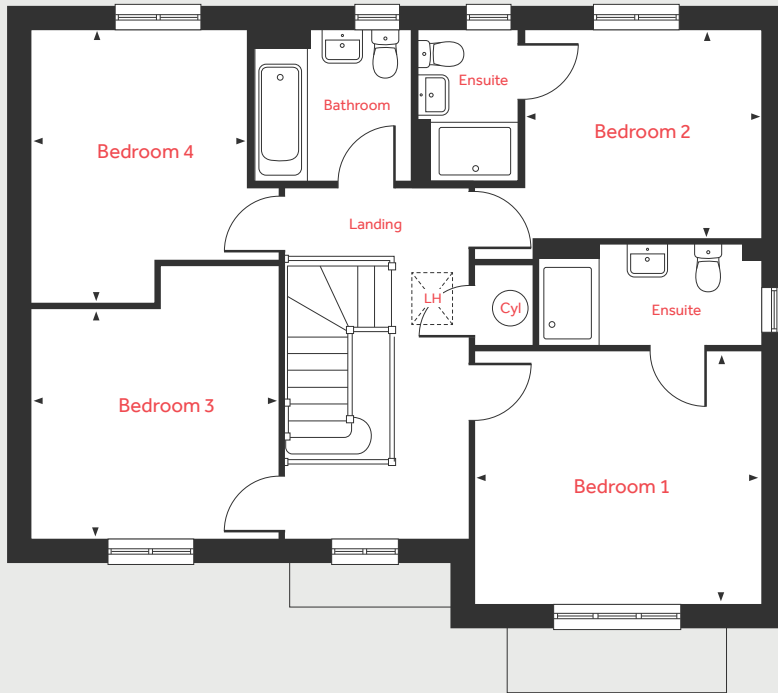
lindenhomes.co.uk

Linden
HOMES

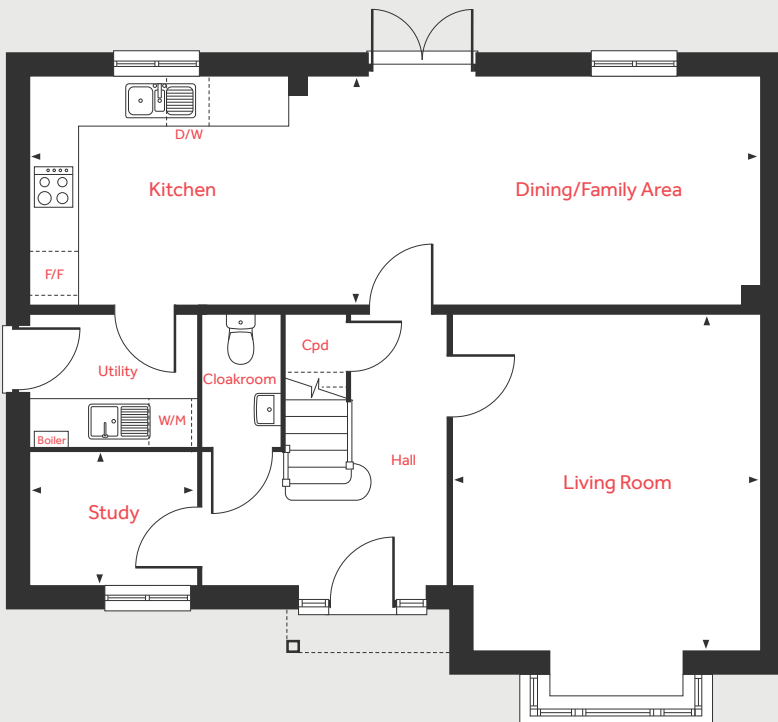
The Cottingham

4 bedroom home

First Floor



Ground Floor



Ground Floor

Living Room

4.60m x 4.20m 15'1" x 13'9"

Kitchen/Dining/Family Area

9.97m x 3.09m 32'8" x 10'1"

Study

2.27m x 1.81m 7'5" x 5'11"

First Floor

Bedroom 1

3.90m x 3.15m 12'10" x 10'4"

Bedroom 2

3.24m x 3.14m 10'7" x 10'4"

Bedroom 3

3.73m x 3.39m 12'3" x 11'2"

Bedroom 4

3.73m x 2.93m 12'3" x 9'7"

F/F	Integrated fridge freezer	Cyl	Hot water cylinder
W/M	Space for washing machine	LH	Loft hatch
D/W	Space for dishwasher	◀ ▶	Measuring points
Cpd	Cupboard		

Please note, floorplans and dimensions are taken from architectural drawings and are for guidance only. Dimensions stated are within a tolerance of plus or minus 50mm. Overall dimensions are usually stated and there may be projections into these. With our continual improvement policy we constantly review our designs and specification to ensure we deliver the best product to our customers. Computer generated images not to scale. Finishes and materials may vary and landscaping is illustrative only. Kitchen layouts are indicative only and may change. To confirm specific details on our homes please ask your Sales Consultant. December 2021.

Linden
HOMES



The Fletcher 5 bedroom home

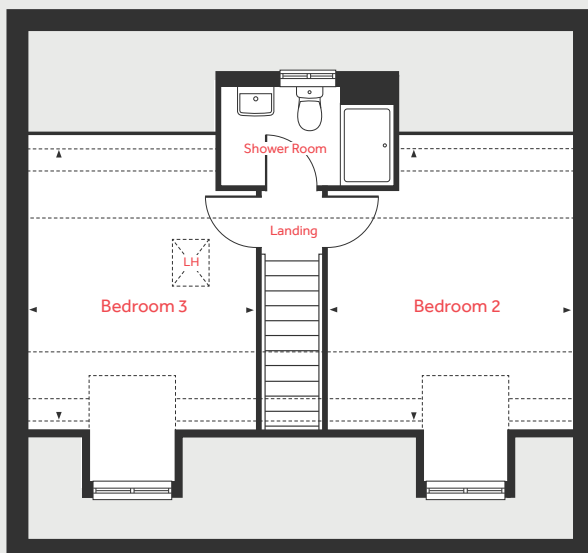
Manor View

West Sussex RH19 4LX | 01342 590 144

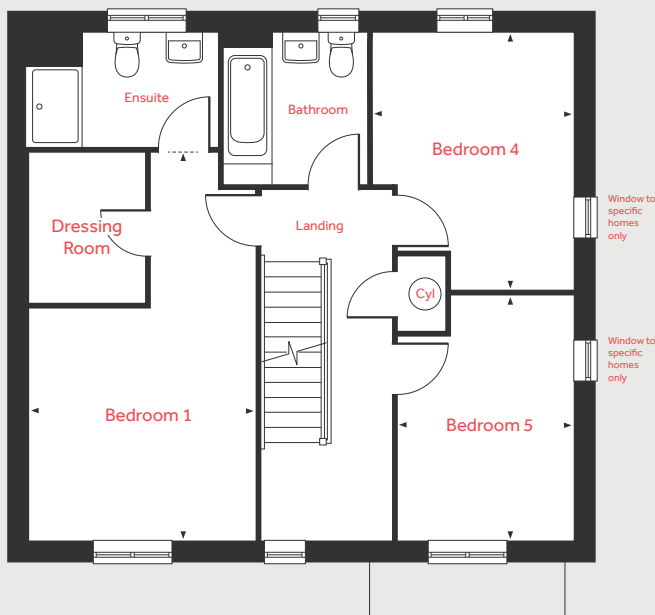
lindenhomes.co.uk

Linden
HOMES

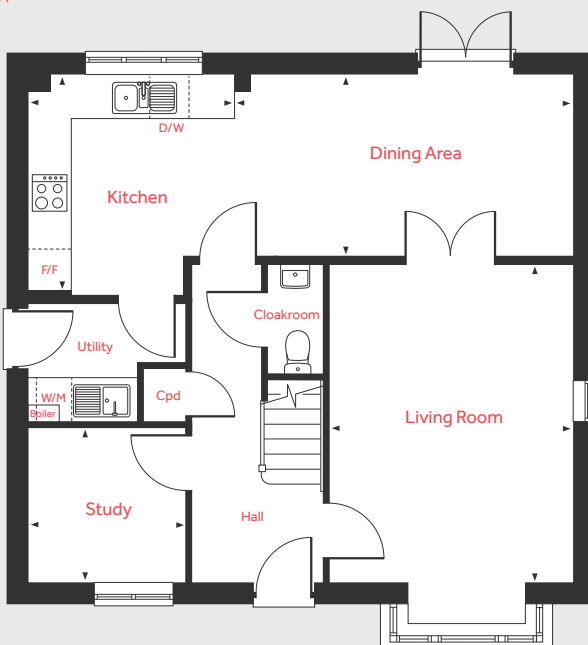
Second Floor



First Floor



Ground Floor



The Fletcher

5 bedroom home

Ground Floor

Living Room

4.83m x 3.72m

15'10" x 12'2"

Kitchen

3.34m x 3.05m

11'0" x 10'0"

Dining Area

5.24m x 2.74m

17'2" x 9'0"

Study

2.41m x 2.37m

7'11" x 7'9"

First Floor

Bedroom 1

5.91m x 3.46m

19'4" x 11'4"

Bedroom 4

3.92m x 3.05m

12'10" x 10'0"

Bedroom 5

3.72m x 2.67m

12'2" x 8'9"

Second Floor

Bedroom 2

4.18m x 3.72m

13'8" x 12'2"

Bedroom 3

4.18m x 3.46m

13'8" x 11'4"

F/F	Integrated fridge freezer	Cyl	Hot water cylinder
W/M	Space for washing machine	LH	Loft hatch
D/W	Space for dishwasher	- - -	Restricted ceiling height
Cpd	Cupboard	◀ ▶	Measuring points

Please note, floorplans and dimensions are taken from architectural drawings and are for guidance only. Dimensions stated are within a tolerance of plus or minus 50mm. Overall dimensions are usually stated and there may be projections into these. With our continual improvement policy we constantly review our designs and specification to ensure we deliver the best product to our customers. Computer generated images not to scale. Finishes and materials may vary and landscaping is illustrative only. Kitchen layouts are indicative only and may change. To confirm specific details on our homes please ask your Sales Consultant. December 2021.

Linden

HOMES