



Keeping you updated

We wanted to provide you with an update on the development and what you can expect from us over the coming months.

Overview

The development will include:

- A mixture of private and affordable housing comprising a total of 120 units.
- Public Open Space and play areas included within public areas in phase 2, including a pocket park.
- Photovoltaic panels are included on all plots.

Site activity

- Roads and drainage are almost completed.
- Around 76 housing plots have commenced and the superstructure for the 12 apartments is in the process of being completed.

Drainage and Services

- Mains drainage and services are largely complete.

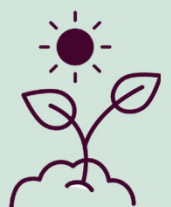
Timeline



- Opening date of play parks, larger area of POS areas will be completed and opened after completion of the main site construction.
- Roads and footpaths are being constructed.
- Around 76 houses are in different stages of construction to date. The superstructure has been progressed, and brickwork to 2nd floor is ongoing for apartments.
- Sales centre and show homes now open – The Mountford and The Eveleigh.
- We already have occupancy in a number of plots on site.

Ecology

- Protected species are not currently located on The Meadows, however periodic reviews are undertaken to ensure that we comply with any ecological requirements and responsibilities.
- Trees within the project are protected and managed.
- Local water features, such as the ponds to the northern area and brooks, are maintained as required under local authority requirements.



Managing agent

- We are partnering with Trustgreen on this scheme for the landscape management and maintenance of the general amenity areas being retained or created on the development.

Development layout plan



How will the development benefit the local community?

The Meadows will support the local community by contributing over £1,475,947 towards:

- S106 contributions, local donations.
- £558,120 contribution towards local education.
- Contribution towards play area and community facilities to be located on the Council Community Land.
- Contribution towards delivery and maintenance of open space and green infrastructure on the Open Space land.

Please be aware that the dates and information provided are correct at time of print and are dependent on a number of factors, including weather, so are subject to change.

Thank you for your patience while the construction work is taking place. We try to keep disruption to a minimum but appreciate it can be noisy and dirty at times so do contact us if you have any questions, or if you'd like to provide any feedback, by emailing:

themeadowssales@lindenhomes.co.uk

**Linden
Homes**