

Kings Newton Development update

Issue 5 | Summer 2026



Keeping you updated

We wanted to provide you with an update on the development and what you can expect from us over the coming months.

Overview

Kings Newton provides a collection of 2, 3, 4 & 5 bedroom homes in an exciting new community in Grantham, Lincolnshire.

Kings Newton has been named in tribute to Sir Isaac Newton, the famous mathematician, astronomer and physicist, who attended The King's School in Grantham between 1655 and 1660. Newton discovered gravity and formulated the three laws of motion – the basic principles of modern physics.

This development comprises of one phase including 228 homes, with 23 of those being Discounted Open Market Dwellings.

Site activity

- Construction is currently just over 40% complete and is as per build route and programme. Phase 2 will begin in July 2026.
- Picture Living - the flagship private rental sector strategy from Thriving Investments - has partnered with Vistry's Kings Newton development to build 41 new homes for private rent.
- Gas, water and electric is live on site. Substation is complete.
- Sales Centre is open to the public along with the show home and view home.

Timeline



- Sales centre is open to the public.
- Show Home – The Knightley and View Home – The Pembroke are viewable.
- First occupations took place in 2025
- Shared Ownership scheme - Home Reach is available on site offering to buy up to 75% share of your home, and pay rent on the remaining amount. Required deposit is 5% from the share you are purchasing. T&C apply.

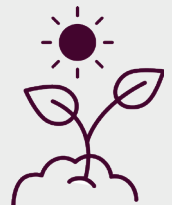
Managing agent

- Trinity (Estates) Property Management Limited are acting as managing agents.
- Trinity (Estates) Property Management Limited will be responsible for the maintenance of public open spaces & surface water drainage upon completion of the areas/development'
- Please refer to the Development Information document for the full breakdown of services & charges.

Ecology

The Biodiversity Strategy has been developed to provide biodiversity opportunities and enhancements within the development.

There are various bats, birds and newt homes throughout the development.



Services

- The water board: IWNL
- Sewerage: Anglian Water
- Gas and Electric supplier: British Gas
- Fibre: OFNL

5 bedroom home

The Ripley

4 bedroom home

- The Aslin
- The Cottingham
- The Knightley
- The Mylne
- The Pembroke

3 bedroom home

- The Eveleigh
- The Mountford
- The Wyatt

2 bedroom home

- The Hardwick

*Discounted Open Market Dwellings.
Subject to strict eligibility criteria.
For full details, please refer to the
Sales Consultant.

embankment/slope v visitor car parking



The site plan shown on this page has been produced for home identification purposes only and is not to scale. The development layout, landscaping and tenure of all dwellings may be subject to change throughout the course of the development. Homes shown as "pre sold" and other properties sold on the general market may not be sold to individual owner occupiers and may instead be transferred to other purchasers, including private investors or affordable housing providers. As partner arrangements are agreed, the mix of tenures across a development can change significantly and rapidly. Finishes and materials may vary from those shown. Please check the details of your chosen plot and house type with the sales consultant. Development layout plan correct at time of production.

How will the development benefit the local community?

Linden Homes will also support the local community by contributing over £2 million towards:

- Roads and transport
- Health contribution
- Primary, Secondary and 6th form education
- Community centre
- Fire Hydrants

Please be aware that the dates and information provided are correct at time of print and are dependent on a number of factors, including weather, so are subject to change.

Thank you for your patience while the construction work is taking place. We try to keep disruption to a minimum but appreciate it can be noisy and dirty at times so do contact us if you have any questions, or if you'd like to provide any feedback, by emailing:

KingsNewton.Sales@LindenHomes.co.uk

Linden
HOMES