

Ospringe Gardens

Faversham



Linden
HOMES



Around the local neighbourhood

- | | | |
|--|---|-------------------------------|
| 1 Bysing Wood Primary School | 5 Westside Pre-school | 9 The Royal Cinema |
| 2 Oare Gunpowder Works Country Park | 6 Queen Elizabeth's Grammar School | 10 Faversham Pools |
| 3 Sainsbury's supermarket | 7 Shepherd Neame Shop & Visitor Centre | 11 Abbey Sports Centre |
| 4 West Faversham Community Centre | 8 Faversham Market | 12 The Abbey School |

Ospringe Gardens Faversham

A superb collection of 2, 3 & 4 bedroom homes.

Situated in the Kentish town of Faversham, Ospringe Gardens is a fabulous new development of 2, 3 & 4 bedroom homes, conveniently located for the town centre, yet close to coast and countryside. Faversham enjoys a genuine sense of community and offers a host of amenities and facilities for education, shopping, entertainment, sport and leisure. For further retail and leisure opportunities, the world-famous cathedral city of Canterbury, so steeped in history, heritage and culture, is only 10 miles away.

With beautiful countryside nearby and seaside towns such as Whitstable, within easy reach, the area offers many great days out. Whether it's visiting nature reserves, such as Oare Marshes, areas of natural beauty, such as the South Downs, or UNESCO world heritage sites in Canterbury, there's something for everyone. Ospringe Gardens is ideally connected, with bus routes nearby, plus easy access to the A2, M2, M20 and M25. Faversham station is less than 2 miles away, providing regular rail services to Canterbury (11 mins) and London Victoria (74mins).

Distances shown are by road (Source: Google). Fastest journey times are shown (Source: National Rail Enquiries). October 2020.

lindenhomes.co.uk

Linden
HOMES

Ospringe Gardens
Faversham ME13 7NT | 01795 334 631
lindenhomes.co.uk

Linden
HOMES

Development layout



4 bedroom home

- The Aslin
- The Goodridge
- The Mylne
- The Cranbrook
- The Pembroke

3 bedroom home

- The Eveleigh
- The Mountford
- The Wyatt

2 bedroom home

- The Harcourt
- The Harcourt Variant

Affordable Housing *

- 1 bedroom homes
- 2 bedroom homes
- 3 bedroom homes

V Visitor Parking Space Cycle Store

Not to scale. Trees and landscaping are indicative only and may alter during construction. The trees, shrubs and gardens shown are illustrative only. Finishes and materials may vary from those shown here. Please ask your Sales Executive for specific details.



The Harcourt 2 bedroom home

Homes 83, 84, 104, 119, 120, 121 & 122

Ospringe Gardens

Faversham ME13 7NT | 01795 334 631

lindenhomes.co.uk

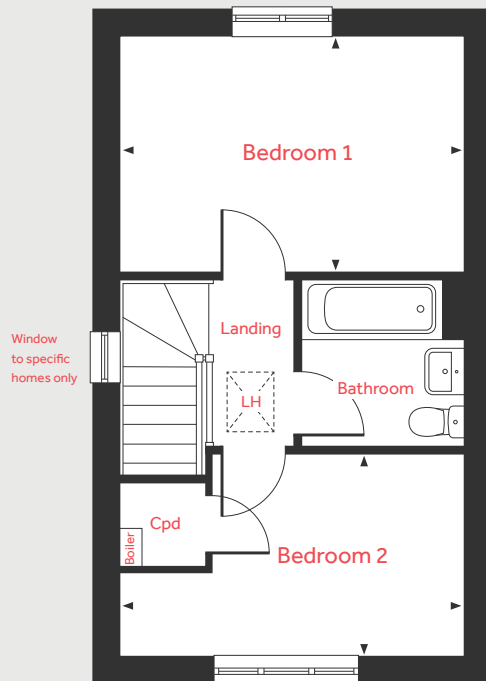
Linden
HOMES

The Harcourt

2 bedroom home

Home 83, 84, 104, 119, 120, 121 & 122

First Floor



Ground Floor

Living Room

4.08m x 2.75m 13'4" x 9'0"

Kitchen/Dining Area

4.56m x 2.00m 14'11" x 6'7"

First Floor

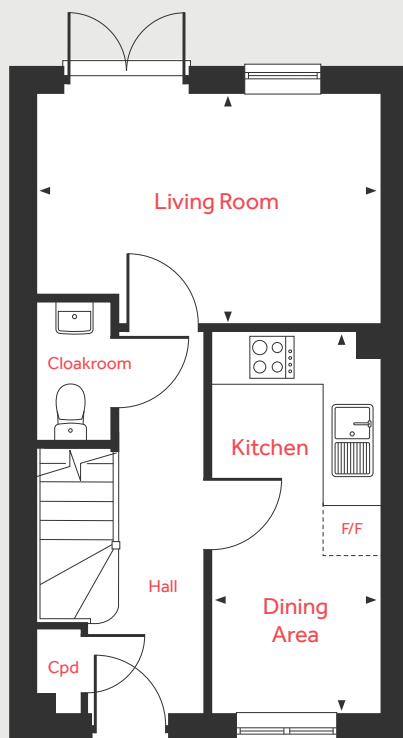
Bedroom 1

4.08m x 2.84m 13'4" x 9'4"

Bedroom 2

4.08m x 2.41m 13'4" x 7'11"

Ground Floor



LH	Loft hatch	F/F	Space for fridge freezer
Cpd	Cupboard	◀ ▶	Measuring points

Please note, floorplans and dimensions are taken from architectural drawings and are for guidance only. Dimensions stated are within a tolerance of plus or minus 50mm. Overall dimensions are usually stated and there may be projections into these. With our continual improvement policy we constantly review our designs and specification to ensure we deliver the best product to our customers. Computer generated images not to scale. Finishes and materials may vary and landscaping is illustrative only. Kitchen layouts are indicative only and may change. To confirm specific details on our homes please ask your Sales Executive. October 2020.

Linden
HOMES



The Harcourt Variant 2 bedroom home

Homes 66, 67, 85, 86, 95, 100, 112 & 116

Ospringe Gardens
Faversham ME13 7NT | 01795 334 631
[lindenhomes.co.uk](https://www.lindenhomes.co.uk)

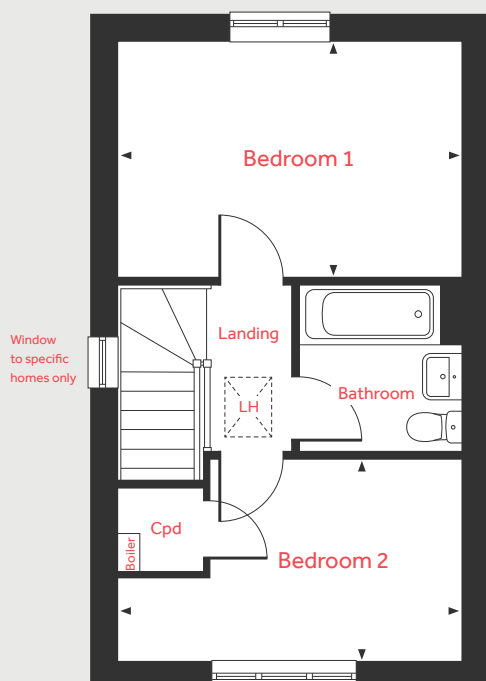
Linden
HOMES

The Harcourt Variant

2 bedroom home

Home 66, 67, 85, 86, 95, 100, 112 & 116

First Floor



Ground Floor

Living Room

4.08m x 3.41m 13'4" x 11'2"

Kitchen/Dining Area

4.08m x 2.75m 13'4" x 9'0"

First Floor

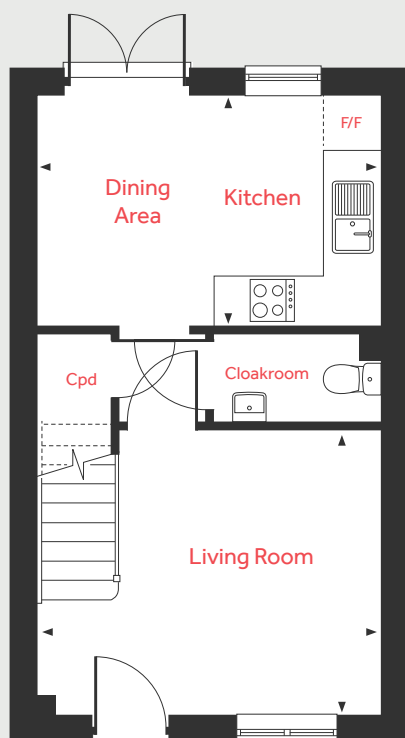
Bedroom 1

4.08m x 2.84m 13'4" x 9'4"

Bedroom 2

4.08m x 2.41m 13'4" x 7'11"

Ground Floor



LH	Loft hatch	F/F	Space for fridge freezer
Cpd	Cupboard	◀ ▶	Measuring points

Please note, floorplans and dimensions are taken from architectural drawings and are for guidance only. Dimensions stated are within a tolerance of plus or minus 50mm. Overall dimensions are usually stated and there may be projections into these. With our continual improvement policy we constantly review our designs and specification to ensure we deliver the best product to our customers. Computer generated images not to scale. Finishes and materials may vary and landscaping is illustrative only. Kitchen layouts are indicative only and may change. To confirm specific details on our homes please ask your Sales Executive. October 2020.

Linden
HOMES



The Eveleigh 3 bedroom home

Homes 64, 65, 68, 69, 73, 77, 82, 87, 96, 97, 98, 99, 103, 105, 113, 114, 115, 118 & 123

Ospringle Gardens

Faversham ME13 7NT | 01795 334 631

lindenhomes.co.uk

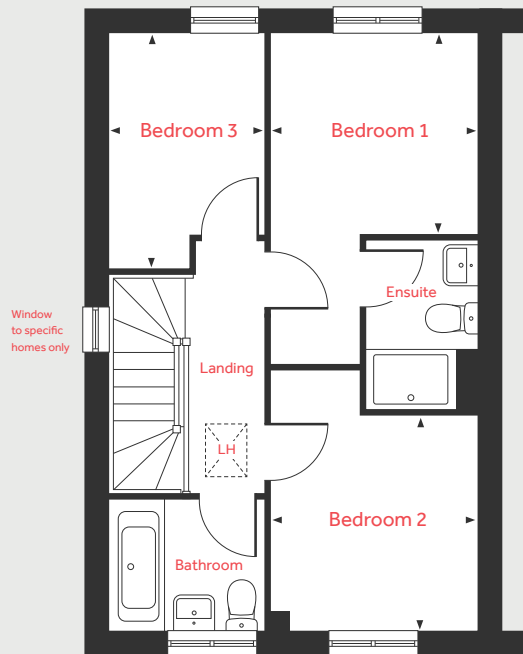
Linden
HOMES

The Eveleigh

3 bedroom home

Homes 64, 65, 68, 69, 73, 77, 82, 87, 96, 97, 98, 99, 103, 105, 113, 114, 115, 118 & 123

First Floor



Ground Floor

Living Room

4.98m x 3.20m 16'4" x 10'6"

Kitchen/Dining Area

4.78m x 2.80m 15'8" x 9'2"

First Floor

Bedroom 1

2.78m x 2.72m 9'1" x 8'11"

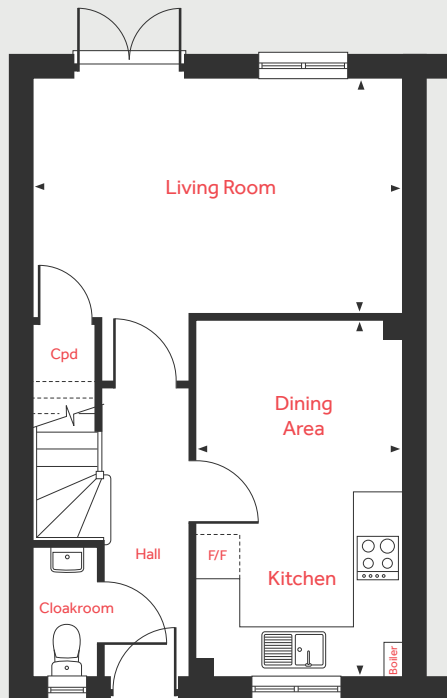
Bedroom 2

2.90m x 2.78m 9'6" x 9'1"

Bedroom 3

3.20m x 2.12m 10'6" x 6'11"

Ground Floor



LH	Loft hatch	F/F	Space for fridge freezer
Cpd	Cupboard	◀ ▶	Measuring points

Please note, floorplans and dimensions are taken from architectural drawings and are for guidance only. Dimensions stated are within a tolerance of plus or minus 50mm. Overall dimensions are usually stated and there may be projections into these. With our continual improvement policy we constantly review our designs and specification to ensure we deliver the best product to our customers. Computer generated images not to scale. Finishes and materials may vary and landscaping is illustrative only. Kitchen layouts are indicative only and may change. To confirm specific details on our homes please ask your Sales Executive. October 2020.

Linden
HOMES



The Mountford 3 bedroom home

Homes 49, 63 & 70

Ospringe Gardens
Faversham ME13 7NT | 01795 334 631
[lindenhomes.co.uk](https://www.lindenhomes.co.uk)

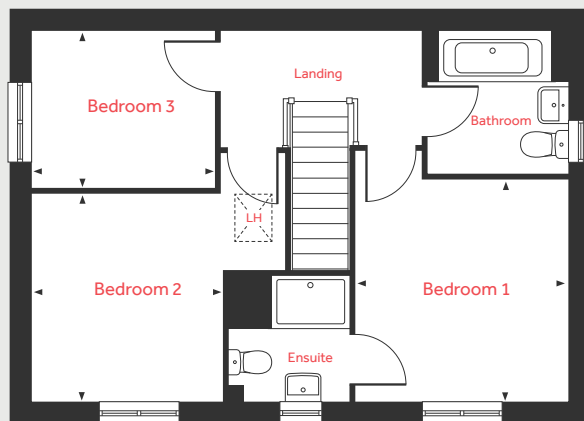
Linden
HOMES

The Mountford

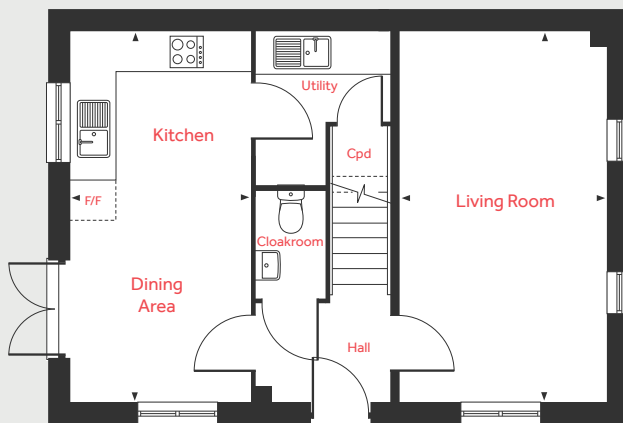
3 bedroom home

Homes 49, 63 & 70

First Floor



Ground Floor



Ground Floor

Living Room

5.59m x 3.11m 18'4" x 10'2"

Kitchen/Dining Area

5.59m x 2.70m 18'4" x 8'10"

First Floor

Bedroom 1

3.36m x 3.19m 11'0" x 10'5"

Bedroom 2

3.15m x 2.86m 10'4" x 9'5"

Bedroom 3

2.76m x 2.36m 9'0" x 7'9"

LH	Loft hatch	F/F	Space for fridge freezer
Cpd	Cupboard	◀ ▶	Measuring points

Please note, floorplans and dimensions are taken from architectural drawings and are for guidance only. Dimensions stated are within a tolerance of plus or minus 50mm. Overall dimensions are usually stated and there may be projections into these. With our continual improvement policy we constantly review our designs and specification to ensure we deliver the best product to our customers. Computer generated images not to scale. Finishes and materials may vary and landscaping is illustrative only. Kitchen layouts are indicative only and may change. To confirm specific details on our homes please ask your Sales Executive. October 2020.

Linden
HOMES



The Wyatt 3 bedroom home

Homes 4, 5, 6, 12, 13, 14, 15, 20, 21, 22, 74, 75 & 76

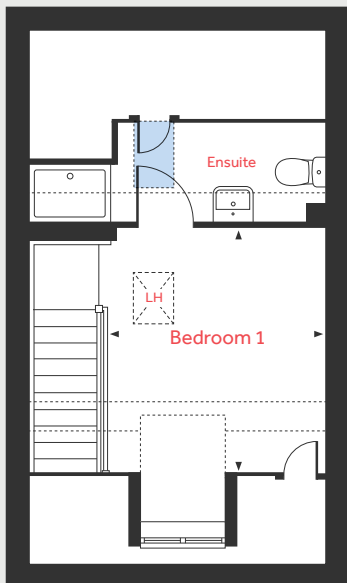
Ospringe Gardens

Faversham ME13 7NT | 01795 334 631

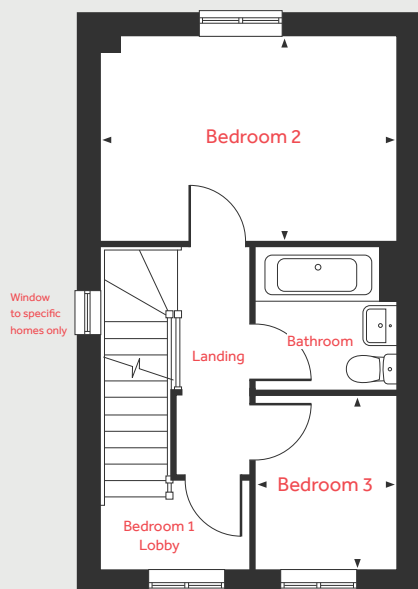
[lindenhomes.co.uk](https://www.lindenhomes.co.uk)

Linden
HOMES

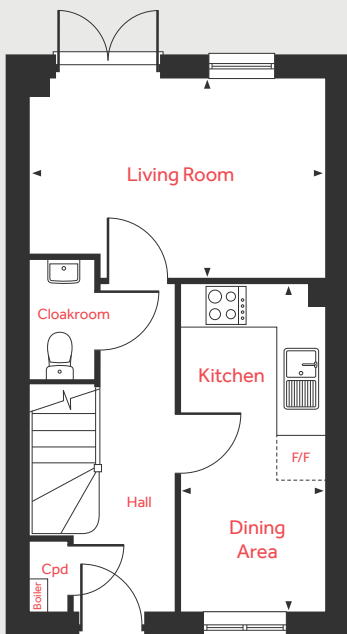
Second Floor



First Floor



Ground Floor



The Wyatt

3 bedroom home

Homes 4, 5, 6, 12, 13, 14, 15, 20, 21, 22, 74, 75 & 76

Ground Floor

Living Room

4.08m x 2.75m 13'4" x 9'0"

Kitchen/Dining Area

4.56m x 2.00m 14'11" x 6'7"

First Floor

Bedroom 2

4.08m x 2.84m 13'4" x 9'4"

Bedroom 3

2.41m x 1.93m 7'11" x 6'4"

Second Floor

Bedroom 1

3.42m x 3.02m 11'3" x 9'11"

LH	Loft hatch	Velux window
Cyl	Hot water cylinder	Measuring points
Cpd	Cupboard	Reduced ceiling height
F/F	Space for fridge freezer	

Please note, floorplans and dimensions are taken from architectural drawings and are for guidance only. Dimensions stated are within a tolerance of plus or minus 50mm. Overall dimensions are usually stated and there may be projections into these. With our continual improvement policy we constantly review our designs and specification to ensure we deliver the best product to our customers. Computer generated images not to scale. Finishes and materials may vary and landscaping is illustrative only. Kitchen layouts are indicative only and may change. To confirm specific details on our homes please ask your Sales Executive. October 2020.

Linden

HOMES



The Aslin 4 bedroom home

Homes 2, 3, 7, 8, 11, 16, 19 & 23

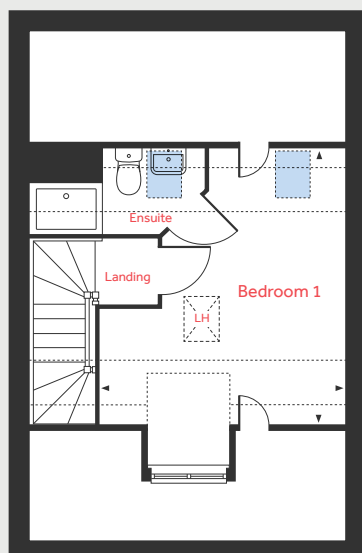
Ospringe Gardens

Faversham ME13 7NT | 01795 334 631

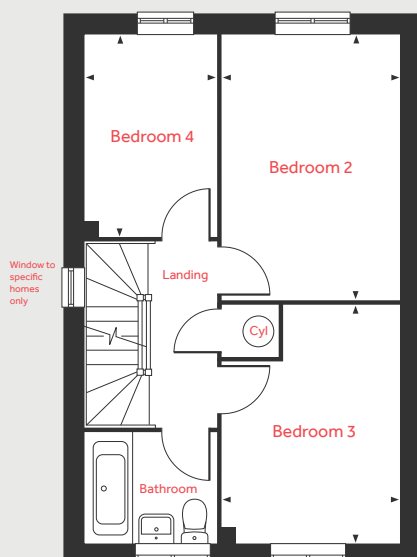
lindenhomes.co.uk

Linden
HOMES

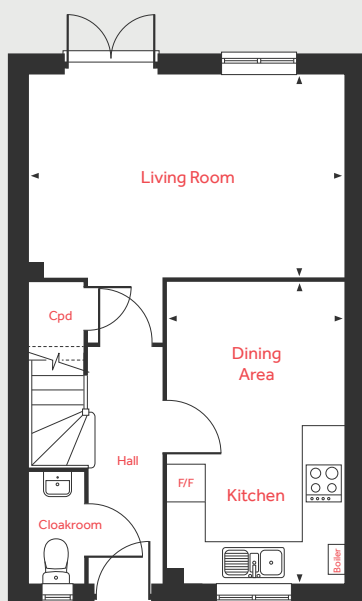
Second Floor



First Floor



Ground Floor



The Aslin

4 bedroom home

Homes 2, 3, 7, 8, 11, 16, 19 & 23

Ground Floor

Living Room

4.98m x 3.20m 16'4" x 10'6"

Kitchen/Dining Area

4.78m x 2.80m 15'8" x 9'2"

First Floor

Bedroom 2

4.21m x 2.80m 13'9" x 9'2"

Bedroom 3

3.78m x 2.80m 12'4" x 9'2"

Bedroom 4

3.20m x 2.10m 10'6" x 6'10"

Second Floor

Bedroom 1

4.42m x 3.89m 14'6" x 12'9"

LH	Loft hatch	■	Velux window
Cyl	Hot water cylinder	◀ ▶	Measuring points
Cpd	Cupboard	- - -	Reduced ceiling height
F/F	Space for fridge freezer		

Please note, floorplans and dimensions are taken from architectural drawings and are for guidance only. Dimensions stated are within a tolerance of plus or minus 50mm. Overall dimensions are usually stated and there may be projections into these. With our continual improvement policy we constantly review our designs and specification to ensure we deliver the best product to our customers. Computer generated images not to scale. Finishes and materials may vary and landscaping is illustrative only. Kitchen layouts are indicative only and may change. To confirm specific details on our homes please ask your Sales Executive. October 2020.

Linden
HOMES



The Goodridge 4 bedroom home

Homes 81, 88, 102 & 106

Ospringe Gardens

Faversham ME13 7NT | 01795 334 631

lindenhomes.co.uk

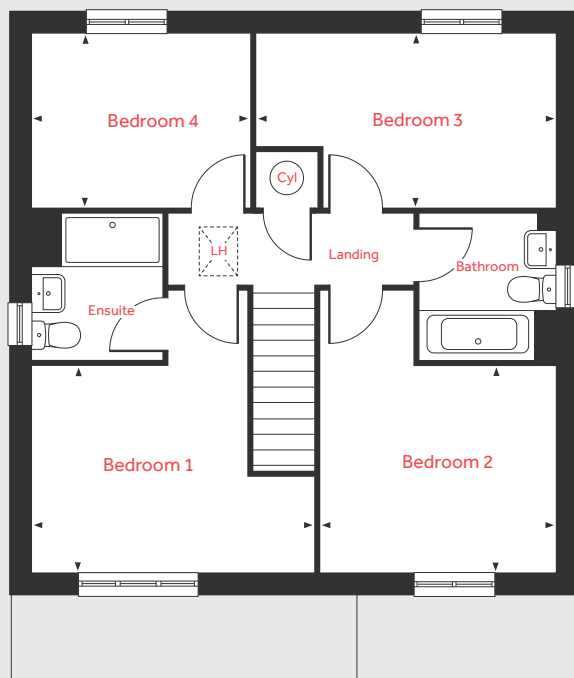
Linden
HOMES

The Goodridge

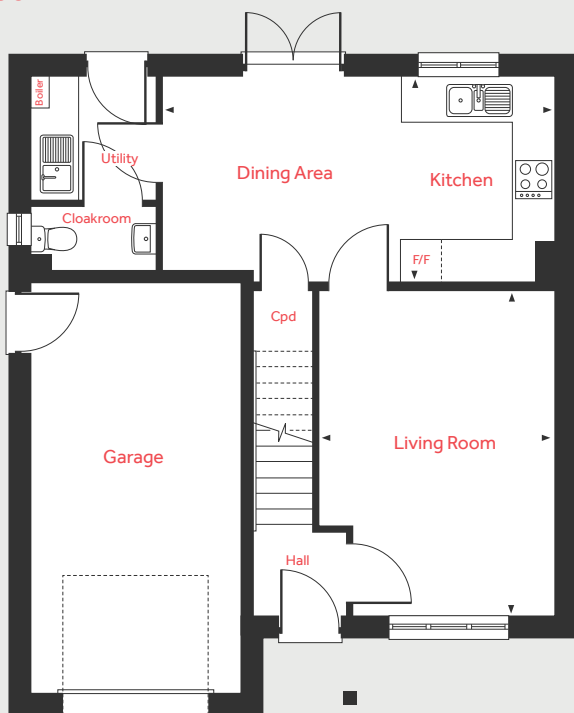
4 bedroom home

Homes 81, 88, 102 & 106

First Floor



Ground Floor



Ground Floor

Living Room

4.73m x 3.43m 15'6" x 11'3"

Kitchen/Dining Area

5.74m x 2.96m 18'10" x 9'8"

First Floor

Bedroom 1

4.10m x 3.00m 13'5" x 9'10"

Bedroom 2

3.43m x 3.00m 11'3" x 9'10"

Bedroom 3

4.36m x 2.52m 14'3" x 8'3"

Bedroom 4

3.17m x 2.52m 10'5" x 8'3"

LH	Loft hatch	F/F	Integrated fridge freezer
Cyl	Hot water cylinder	◀ ▶	Measuring points
Cpd	Cupboard		

Please note, floorplans and dimensions are taken from architectural drawings and are for guidance only. Dimensions stated are within a tolerance of plus or minus 50mm. Overall dimensions are usually stated and there may be projections into these. With our continual improvement policy we constantly review our designs and specification to ensure we deliver the best product to our customers. Computer generated images not to scale. Finishes and materials may vary and landscaping is illustrative only. Kitchen layouts are indicative only and may change. To confirm specific details on our homes please ask your Sales Executive. October 2020.

Linden

HOMES



The Mylne 4 bedroom home

Homes 72, 78, 90, 91, 92, 93, 107, 108, 109 & 110

Ospringe Gardens

Faversham ME13 7NT | 01795 334 631

[lindenhomes.co.uk](https://www.lindenhomes.co.uk)

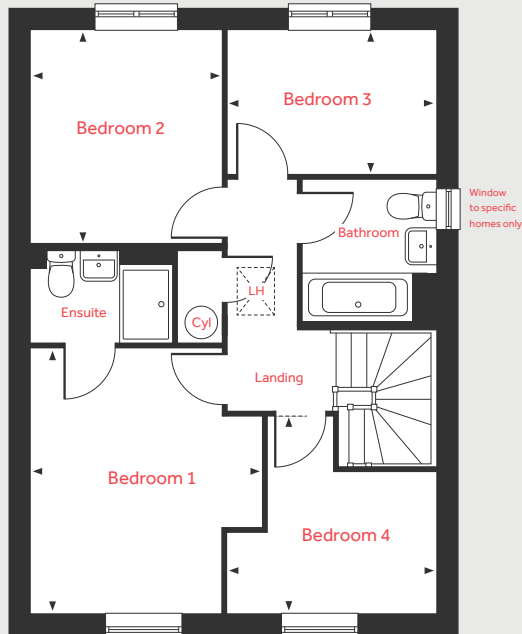
Linden
HOMES

The Mylne

4 bedroom home

Homes 72, 78, 90, 91, 92, 93, 107, 108, 109 & 110

First Floor



Ground Floor

Living Room

4.83m x 3.39m 15'10" x 11'1"

Kitchen/Dining Area

6.04m x 4.37m 19'9" x 14'4"

First Floor

Bedroom 1

3.95m x 3.46m 12'11" x 11'4"

Bedroom 2

3.20m x 2.86m 10'6" x 9'4"

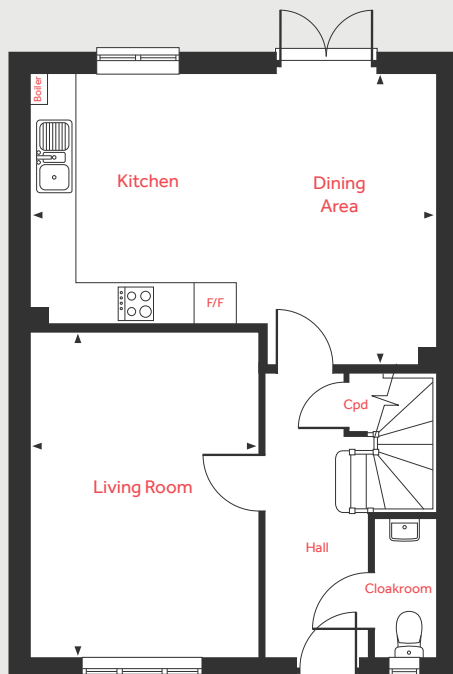
Bedroom 3

3.10m x 2.16m 10'2" x 7'1"

Bedroom 4

3.10m x 2.92m 10'2" x 9'7"

Ground Floor



LH	Loft hatch	F/F	Integrated fridge freezer
Cyl	Hot water cylinder	◀ ▶	Measuring points
Cpd	Cupboard		

Please note, floorplans and dimensions are taken from architectural drawings and are for guidance only. Dimensions stated are within a tolerance of plus or minus 50mm. Overall dimensions are usually stated and there may be projections into these. With our continual improvement policy we constantly review our designs and specification to ensure we deliver the best product to our customers. Computer generated images not to scale. Finishes and materials may vary and landscaping is illustrative only. Kitchen layouts are indicative only and may change. To confirm specific details on our homes please ask your Sales Executive. October 2020.

Linden
HOMES



The Cranbrook 4 bedroom home

Homes 1, 9, 10, 17, 18, 24, 94, 101, 111 & 117

Ospringe Gardens

Faversham ME13 7NT | 01795 334 631

[lindenhomes.co.uk](https://www.lindenhomes.co.uk)

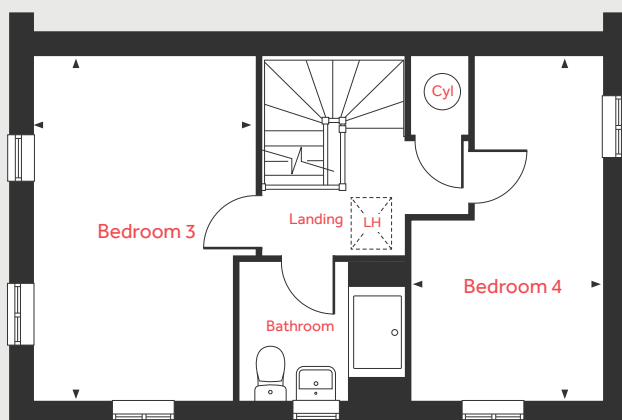
Linden
HOMES

The Cranbrook

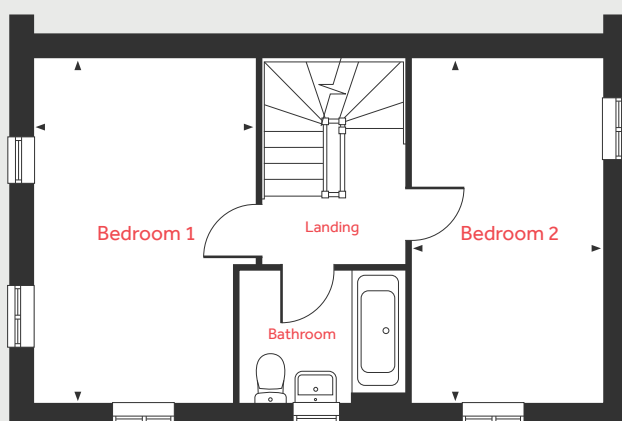
4 bedroom home

Homes **1, 9, 10, 17, 18, 24, 94, 101, 111 & 117**

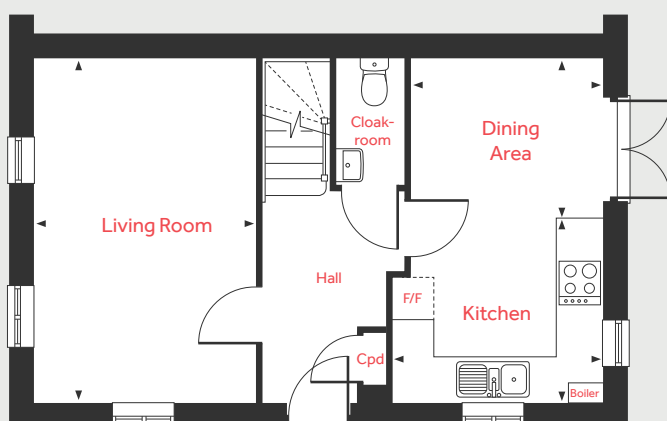
Second Floor



First Floor



Ground Floor



Ground Floor

Living Room

4.89m x 3.15m 16'0" x 10'4"

Dining Area

2.73m x 2.27m 8'11" x 7'5"

Kitchen

2.99m x 2.61m 9'10" x 8'7"

First Floor

Bedroom 1

4.89m x 3.15m 16'0" x 10'4"

Bedroom 2

4.89m x 2.73m 16'0" x 8'11"

Second Floor

Bedroom 3

4.89m x 3.15m 16'0" x 10'4"

Bedroom 4

4.89m x 2.73m 16'0" x 8'11"

LH	Loft hatch	F/F	Space for fridge freezer
Cyl	Hot water cylinder	◀ ▶	Measuring points
Cpd	Cupboard		

Please note, floorplans and dimensions are taken from architectural drawings and are for guidance only. Dimensions stated are within a tolerance of plus or minus 50mm. Overall dimensions are usually stated and there may be projections into these. With our continual improvement policy we constantly review our designs and specification to ensure we deliver the best product to our customers. Computer generated images not to scale. Finishes and materials may vary and landscaping is illustrative only. Kitchen layouts are indicative only and may change. To confirm specific details on our homes please ask your Sales Executive. October 2020.

Linden
HOMES



The Pembroke 4 bedroom home

Homes 71, 79, 80 & 89

Ospringle Gardens

Faversham ME13 7NT | 01795 334 631

lindenhomes.co.uk

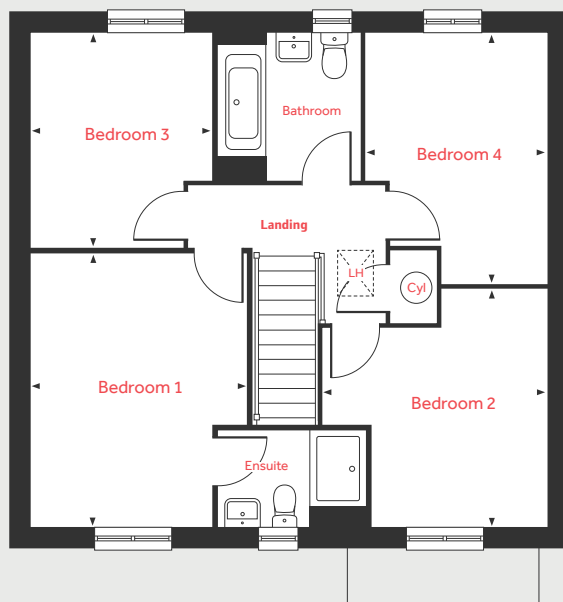
Linden
HOMES

The Pembroke

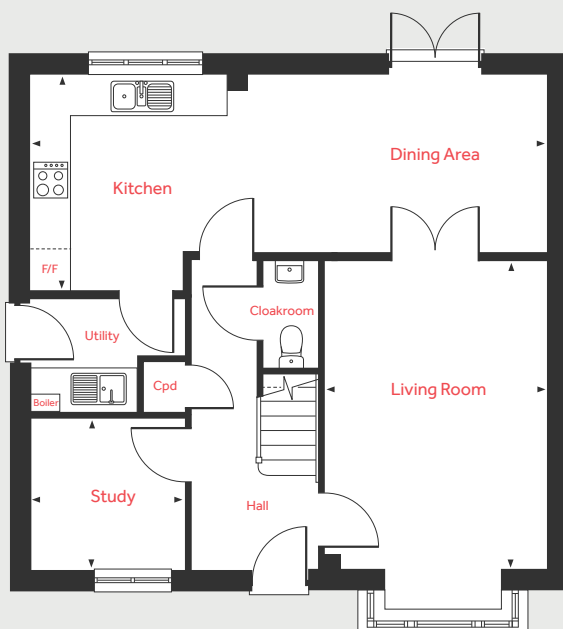
4 bedroom home

Homes 71, 79, 80 & 89

First Floor



Ground Floor



Ground Floor

Living Room

4.83m x 3.50m 15'10" x 11'5"

Kitchen/Dining Area

8.06m x 3.34m 26'5" x 10'11"

Study

2.41m x 2.37m 7'11" x 7'9"

First Floor

Bedroom 1

4.29m x 3.40m 14'1" x 11'2"

Bedroom 2

3.72m x 3.50m 12'2" x 11'5"

Bedroom 3

3.35m x 2.88m 11'0" x 9'5"

Bedroom 4

3.92m x 2.82m 12'10" x 9'3"

LH	Loft hatch	F/F	Integrated fridge freezer
Cyl	Hot water cylinder	◀ ▶	Measuring points
Cpd	Cupboard		

Please note, floorplans and dimensions are taken from architectural drawings and are for guidance only. Dimensions stated are within a tolerance of plus or minus 50mm. Overall dimensions are usually stated and there may be projections into these. With our continual improvement policy we constantly review our designs and specification to ensure we deliver the best product to our customers. Computer generated images not to scale. Finishes and materials may vary and landscaping is illustrative only. Kitchen layouts are indicative only and may change. To confirm specific details on our homes please ask your Sales Executive. October 2020.

Linden
HOMES



Specification

We give you so much more

Ospringe Gardens

Faversham ME13 7NT | 01795 334 631

lindenhomes.co.uk

Linden
HOMES

Specification

We give you so much more

Each home will be independently surveyed during construction by Premier Guarantee, who will issue their 10 year warranty certificate on completion of the home.

	2 bedroom homes	3 bedroom homes	4 bedroom homes
Kitchens			
Symphony fitted kitchen (Plaza) with premium worktops, upstand and stainless steel splashback behind hob	■	■	■
Stainless steel single bowl sink with drainer and single lever mixer tap	■	■	■
Inset 1½ bowl stainless steel sink with drainer and single lever mixer tap			■
Single stainless steel under worktop oven, gas stainless steel hob and integrated cooker hood	■	■	■
Bathrooms, cloakrooms & ensembles			
White sanitaryware with contemporary chrome fittings	■	■	■
Close-coupled WC with soft close lid	■	■	■
Single-ended bath with wall mounted bath/shower mixer, high-level showerhead and clear glass screen	■		
Single-ended bath with wall mounted bath/shower mixer and low-level, hand-held showerhead		■	■
Thermostatic shower with clear glass enclosure and silver frame to ensuite		■	■
Splashback tiling to basins	■	■	■
Full height tiling to walls around bath	■		
450mm height tiling to walls around bath		■	■
Full height tiling to shower enclosure		■	■
Electrical & lighting			
BT point to service cupboard (master) and living room	■	■	■
Hard wired smoke alarm and battery operated carbon monoxide detector	■	■	■
External light to front door area	■	■	■
Internal finishes			
Internal doors in oak finish with polished chrome lever on rose door handles	■	■	■
White matt emulsion walls and smooth white matt emulsion ceilings	■	■	■
White gloss woodwork	■	■	■
White painted timber staircase with white painted handrail	■	■	■
Heating			
Gas fired boiler, zone controlled, combined programmer and thermostats	■	■	■
Radiators with thermostatic radiator valves	■	■	■
External features			
GRP main entrance door with 3 point locking system (refer to Sales Executive for colour)	■	■	■
PVCu windows with energy efficient glazing	■	■	■
PVCu French and patio doors with energy efficient glazing	■	■	■
Buff riven paving, paths and patios	■	■	■
Rotivated front and rear gardens and turfed front gardens (where not hard landscaped)	■	■	■