

Whiteley Meadows

North Whiteley



Linden
HOMES



Development plan

Whiteley Meadows - Phase 9a

Off Botley Road, Whiteley, Hampshire SO30 2HB | 01489 223866

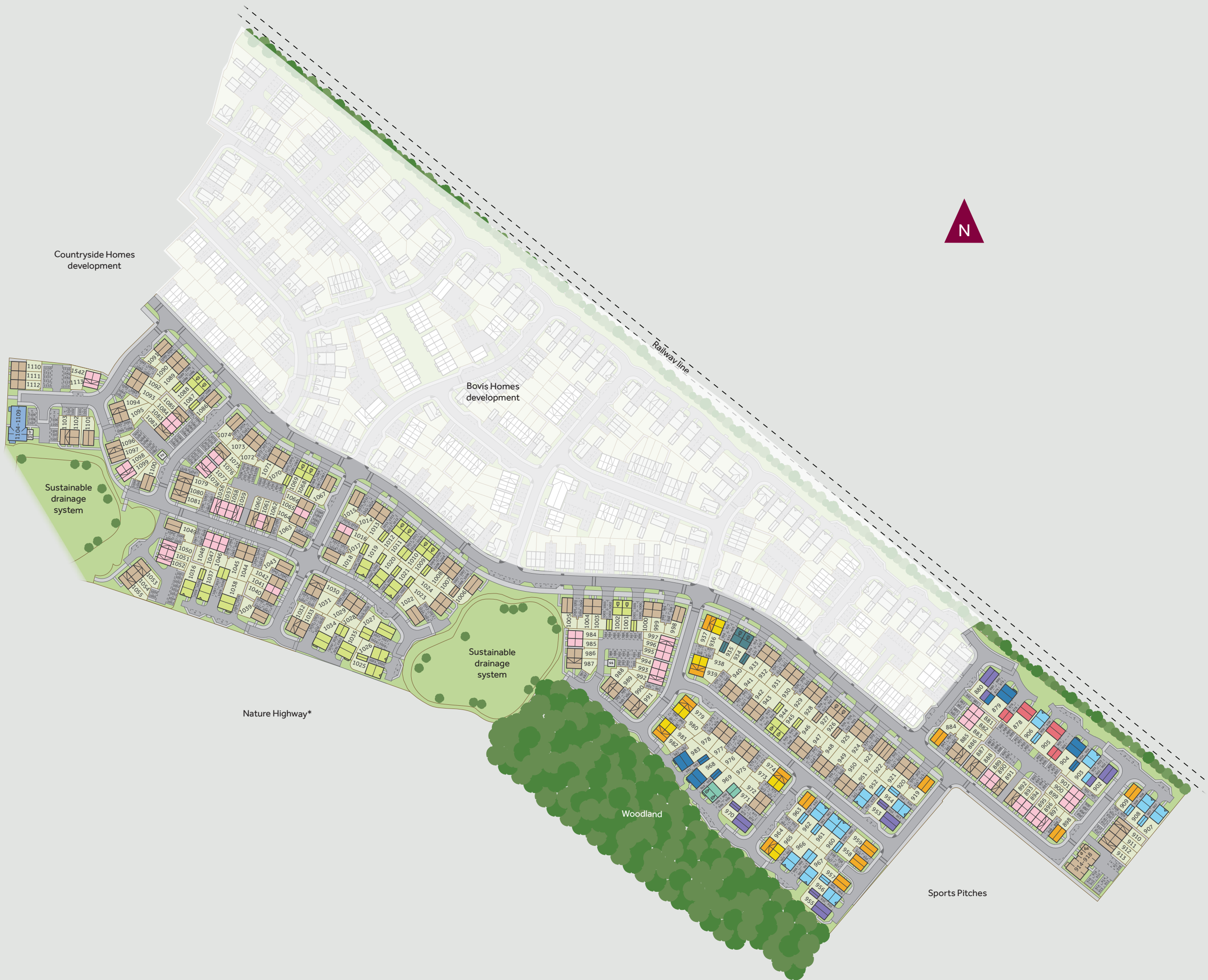
lindenhomes.co.uk

Linden
HOMES

Whiteley Meadows

Whiteley

Phase 9a



5 bedroom homes

- The Fletcher
- The Lutyens

4 bedroom homes

- The Pembroke
- The Hardy
- The Mlyne
- The Aldridge

3 bedroom homes

- The Mountford
- The Eveleigh

Pre-sold homes

- 1 and 2 bedroom apartments
- 2 bedroom homes
- 3 bedroom homes
- 4 bedroom homes

- v** visitor space
- b** bins
- bs** bike store

* A Nature Highway is an area of land that has been left undeveloped to provide habitat for wildlife and to promote and maintain local biodiversity.

This plan has been produced for home identification purposes only and is not to scale. The development layout, landscaping and tenure of all dwellings may be subject to change throughout the course of the development. Finishes and materials may vary from those shown on the plan. Please check the details of your chosen plot and housetype with the sales consultant. Development layout plan correct at time of production.



The Fletcher

5 bedroom home

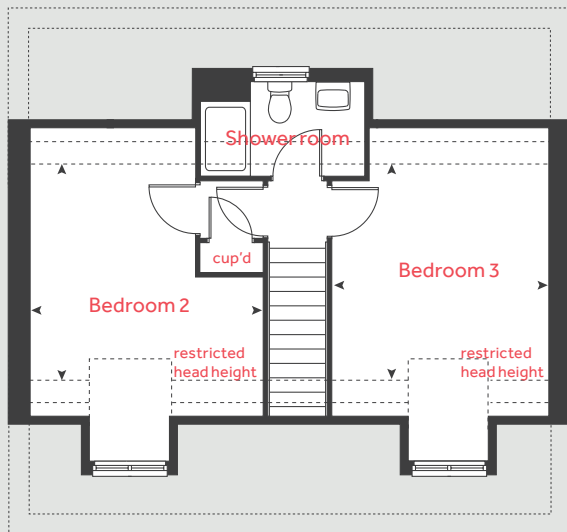
Whiteley Meadows - Phase 9a

Off Botley Road, Whiteley, Hampshire SO30 2HB | 01489 223866

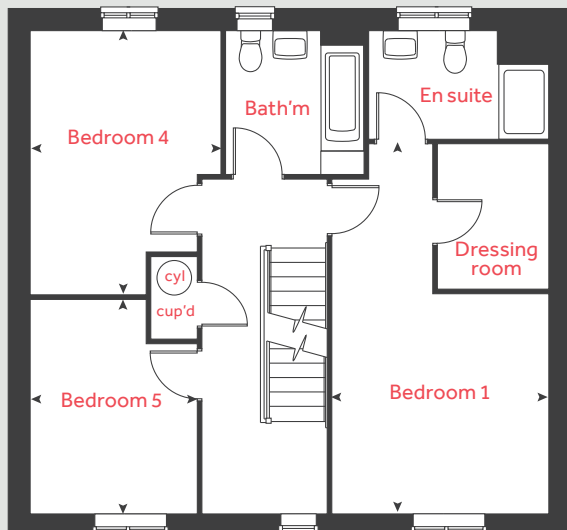
lindenhomes.co.uk

Linden
HOMES

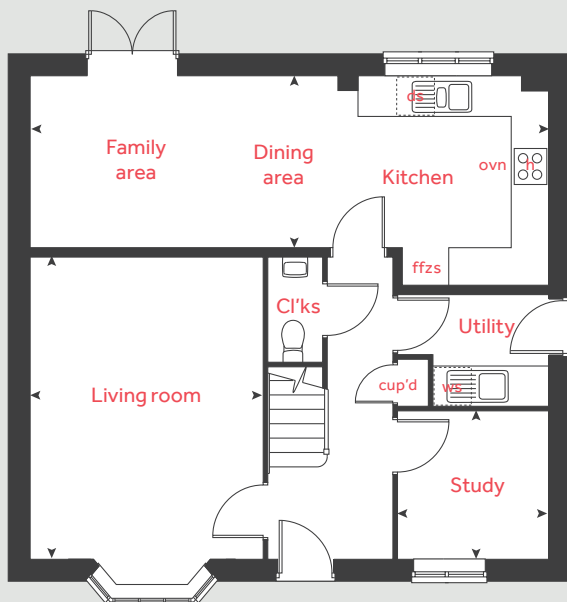
Second floor



First floor



Ground floor



The Fletcher

5 bedroom home

Ground floor	metres	feet / inches
Kitchen / dining / family area	8.29 x 2.74	27' 2" x 9' 0"
Living room	4.83 x 3.72	15' 10" x 12' 2"
Study	2.41 x 2.37	7' 11" x 7' 9"

First floor	metres	feet / inches
Bedroom 1	5.85 x 3.45	19' 2" x 11' 3"
Bedroom 4	4.21 x 3.03	13' 8" x 9' 9"
Bedroom 5	3.42 x 2.67	11' 2" x 8' 8"

Second floor	metres	feet / inches
Bedroom 2	3.96 x 3.66	13' 0" x 12' 0"
Bedroom 3	3.96 x 3.45	13' 0" x 11' 3"

h	hob	ws	washing machine space
ovn	oven	cup'd	cupboard
ffzs	fridge freezer space	cyl	hot water cylinder
ds	dishwasher space	< >	measuring points

The Fletcher | Whiteley Meadows |

The floorplan has been produced for illustrative purposes only. Room sizes shown are between arrow points as indicated on plan. The dimensions have tolerances of + or -50mm and should not be used other than for general guidance. If specific dimensions are required, enquiries should be made to the sales consultant. The floor plans shown are not to scale. Measurements are based on the original drawings. Slight variations may occur during construction.

The illustrations shown are computer generated impressions of how the property may look and are indicative only. External details or finishes may vary on individual plots and homes may be built in either detached or attached styles depending on the development layout. Exact specifications, window styles and whether a property is left or right-handed may differ from plot to plot. Please speak to our sales consultant for specific plot details.

Produced by Vistry Group Design Studio.

When you have finished with this leaflet please recycle it.

NWHT DS11835 / 01.25

Linden

HOMES



The Lutyens

5 bedroom home

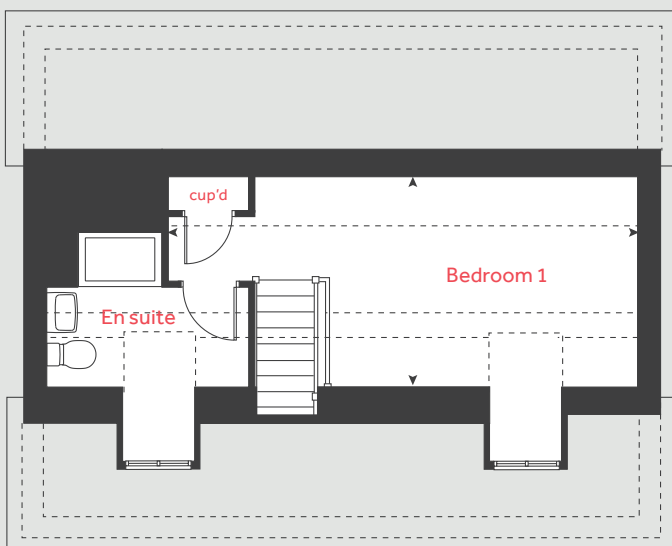
Whiteley Meadows - Phase 9a

Off Botley Road, Whiteley, Hampshire SO30 2HB | 01489 223866

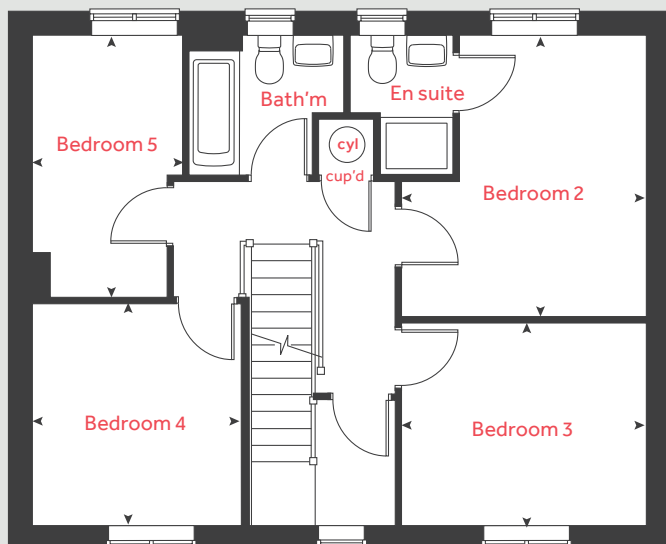
lindenhomes.co.uk

Linden
HOMES

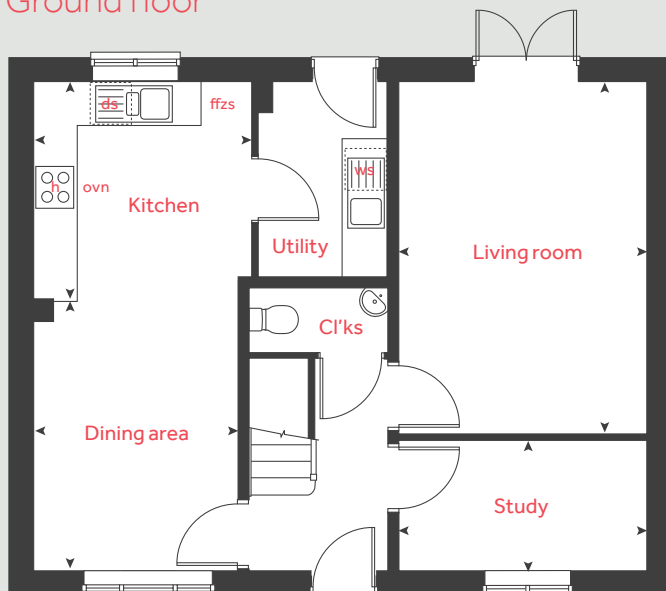
Second floor



First floor



Ground floor



The Lutyens

5 bedroom home

Ground floor	metres	feet / inches
Kitchen	2.99 x 2.98	9' 10" x 9' 10"
Living room	4.82 x 3.39	15' 10" x 11' 2"
Dining area	3.73 x 2.81	12' 3" x 9' 3"
Study	3.39 x 1.80	11' 2" x 5' 11"

First floor

Bedroom 2	3.85 x 3.35	12' 8" x 11' 0"
Bedroom 3	3.35 x 2.77	11' 0" x 9' 1"
Bedroom 4	3.04 x 2.87	10' 0" x 9' 5"
Bedroom 5	3.59 x 2.06	11' 9" x 6' 9"

Second floor

Bedroom 1	6.67 x 3.03	21' 11" x 9' 11"
-----------	-------------	------------------

h	hob	ws	washing machine space
ovn	oven	cup'd	cupboard
ffzs	fridge freezer space	cyl	hot water cylinder
ds	dishwasher space	< >	measuring points

The Lutyens | Whiteley Meadows |

The floorplan has been produced for illustrative purposes only. Room sizes shown are between arrow points as indicated on plan. The dimensions have tolerances of + or -50mm and should not be used other than for general guidance. If specific dimensions are required, enquiries should be made to the sales consultant. The floor plans shown are not to scale. Measurements are based on the original drawings. Slight variations may occur during construction.

The illustrations shown are computer generated impressions of how the property may look and are indicative only. External details or finishes may vary on individual plots and homes may be built in either detached or attached styles depending on the development layout. Exact specifications, window styles and whether a property is left or right-handed may differ from plot to plot. Please speak to our sales consultant for specific plot details.

Produced by Vistry Group Design Studio.

When you have finished with this leaflet please recycle it.

NWHT DS11835 / 01.25

Linden

HOMES



The Mylne

4 bedroom home

Whiteley Meadows - Phase 9a

Off Botley Road, Whiteley, Hampshire SO30 2HB | 01489 223866

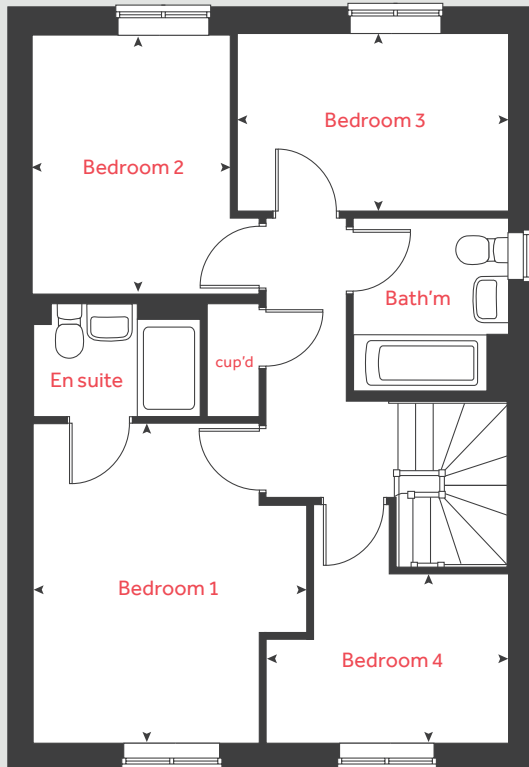
lindenhomes.co.uk

Linden
HOMES

The Mylne

4 bedroom home

First floor



Ground floor	metres	feet / inches
Kitchen / dining / family area	6.08 x 3.80	19' 9" x 12' 5"
Living room	4.83 x 3.39	15' 10" x 11' 2"

First floor

Bedroom 1	3.97 x 2.98	13' 0" x 9' 8"
Bedroom 2	3.20 x 2.56	10' 6" x 8' 2"
Bedroom 3	3.38 x 2.18	11' 3" x 7' 2"
Bedroom 4	3.09 x 2.08	9' 10" x 6' 10"

h	hob	ws	washing machine space
ovn	oven	cup'd	cupboard
ffzs	fridge freezer space	◀ ▶	measuring points
ds	dishwasher space		

The Mylne | Whiteley Meadows |

The floorplan has been produced for illustrative purposes only. Room sizes shown are between arrow points as indicated on plan. The dimensions have tolerances of + or -50mm and should not be used other than for general guidance. If specific dimensions are required, enquiries should be made to the sales consultant. The floor plans shown are not to scale. Measurements are based on the original drawings. Slight variations may occur during construction.

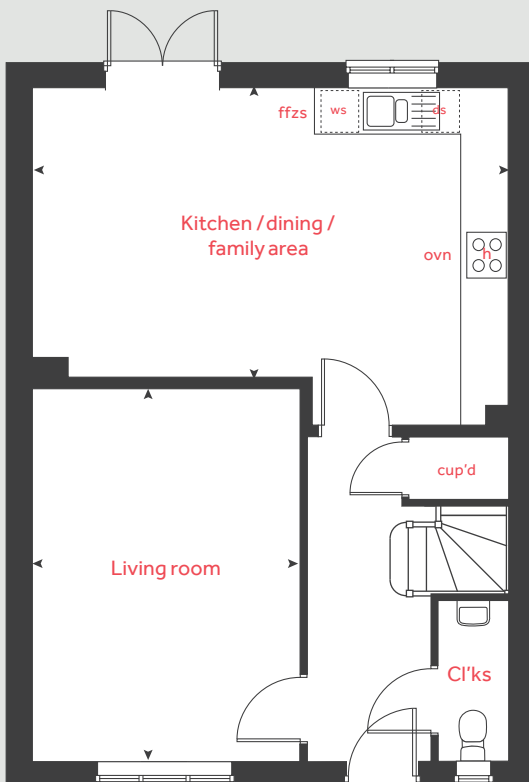
The illustrations shown are computer generated impressions of how the property may look and are indicative only. External details or finishes may vary on individual plots and homes may be built in either detached or attached styles depending on the development layout. Exact specifications, window styles and whether a property is left or right-handed may differ from plot to plot. Please speak to our sales consultant for specific plot details.

Produced by Vistry Group Design Studio.

When you have finished with this leaflet please recycle it.

NWHT DS11835 / 01.25

Ground floor



Linden

HOMES



The Pembroke

4 bedroom home

Whiteley Meadows - Phase 9a

Off Botley Road, Whiteley, Hampshire SO30 2HB | 01489 223866

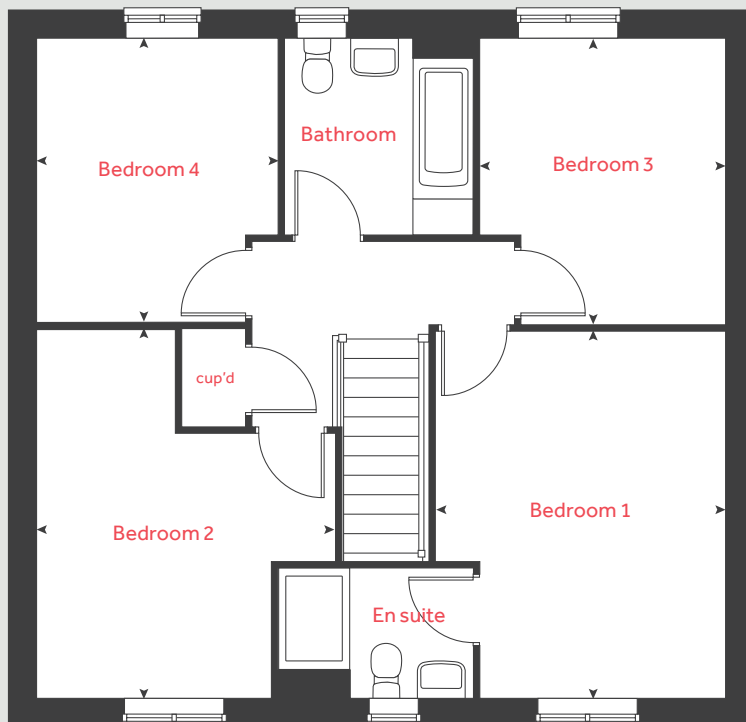
lindenhomes.co.uk

Linden
HOMES

The Pembroke

4 bedroom home

First floor



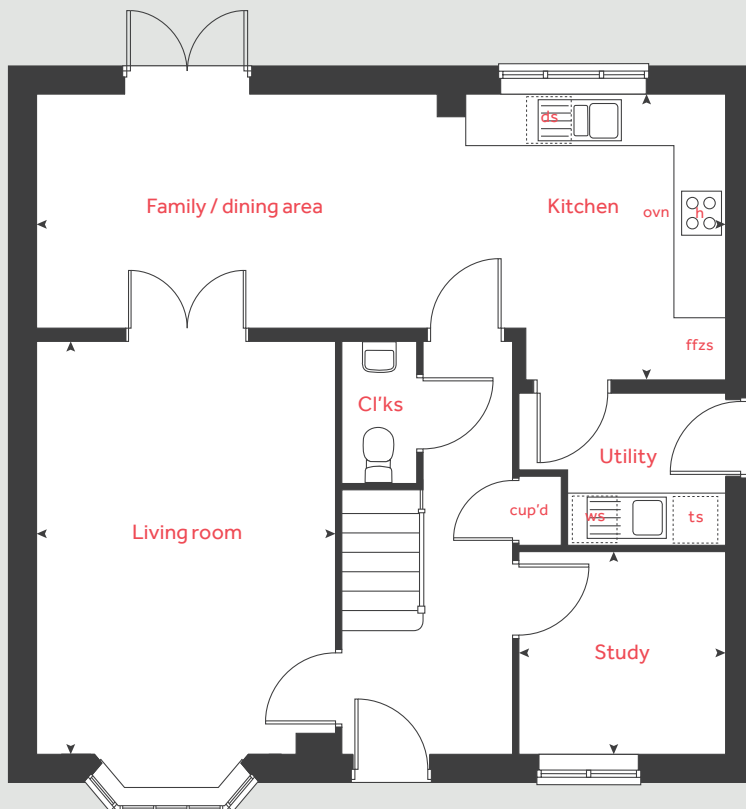
Ground floor	metres	feet / inches
Kitchen / dining / family area	8.07 x 3.36	26' 6" x 11' 0"
Living room	4.83 x 3.48	15' 10" x 11' 5"
Study	2.40 x 2.35	7' 11" x 7' 9"

First floor

Bedroom 1	4.29 x 3.38	14' 1" x 11' 1"
Bedroom 2	4.31 x 3.45	14' 2" x 11' 3"
Bedroom 3	3.35 x 2.87	11' 0" x 9' 5"
Bedroom 4	3.32 x 2.81	10' 11" x 9' 3"

h	hob	ts	tumble dryer space
ovn	oven	ws	washing machine space
ffzs	fridge freezer space	cup'd	cupboard
ds	dishwasher space	◀ ▶	measuring points

Ground floor



The Pembroke | Whiteley Meadows |

The floorplan has been produced for illustrative purposes only. Room sizes shown are between arrow points as indicated on plan. The dimensions have tolerances of + or -50mm and should not be used other than for general guidance. If specific dimensions are required, enquiries should be made to the sales consultant. The floor plans shown are not to scale. Measurements are based on the original drawings. Slight variations may occur during construction.

The illustrations shown are computer generated impressions of how the property may look and are indicative only. External details or finishes may vary on individual plots and homes may be built in either detached or attached styles depending on the development layout. Exact specifications, window styles and whether a property is left or right-handed may differ from plot to plot. Please speak to our sales consultant for specific plot details.

Produced by Vistry Group Design Studio.

When you have finished with this leaflet please recycle it.

NWHT DS11835 / 01.25

Linden
HOMES



The Hardy

4 bedroom home

Whiteley Meadows - Phase 9a

Off Botley Road, Whiteley, Hampshire SO30 2HB | 01489 223866

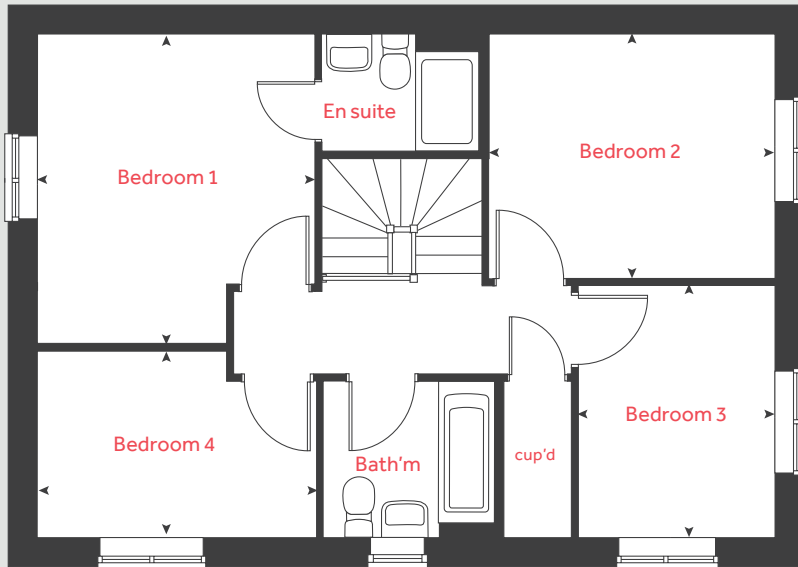
lindenhomes.co.uk

Linden
HOMES

The Hardy

4 bedroom home

First floor



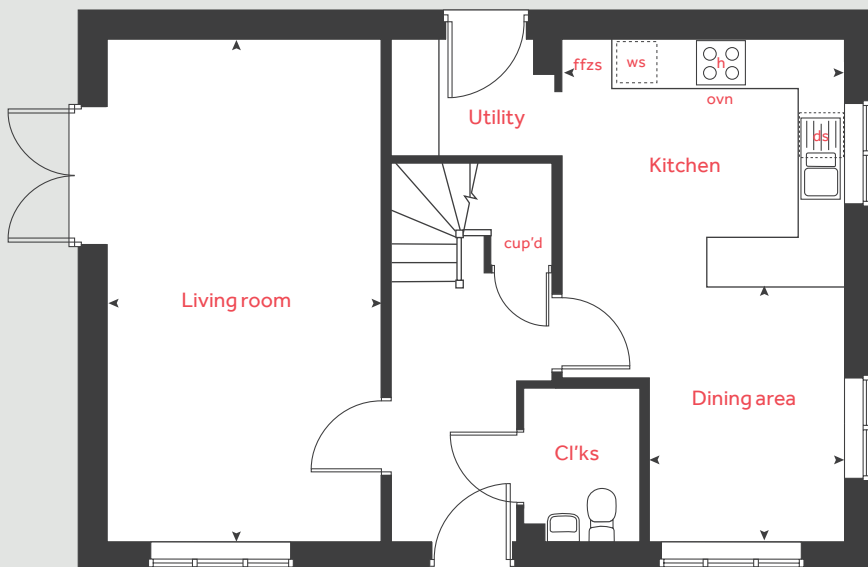
Ground floor	metres	feet / inches
Kitchen / dining area	6.03 x 2.46	19' 9" x 8' 0"
Living room	6.03 x 3.45	19' 9" x 11' 3"

First floor

Bedroom 1	3.71 x 3.49	12' 2" x 11' 5"
Bedroom 2	3.61 x 2.93	11' 10" x 9' 7"
Bedroom 3	3.02 x 2.49	9' 10" x 8' 2"
Bedroom 4	3.52 x 2.24	11' 6" x 7' 4"

h	hob	ws	washing machine space
ovn	oven	cup'd	cupboard
ffzs	fridge freezer space	◀ ▶	measuring points
ds	dishwasher space		

Ground floor



The Hardy | Rosewood vt Whiteley Meadows |

The floorplan has been produced for illustrative purposes only. Room sizes shown are between arrow points as indicated on plan. The dimensions have tolerances of + or -50mm and should not be used other than for general guidance. If specific dimensions are required, enquiries should be made to the sales consultant. The floor plans shown are not to scale. Measurements are based on the original drawings. Slight variations may occur during construction.

The illustrations shown are computer generated impressions of how the property may look and are indicative only. External details or finishes may vary on individual plots and homes may be built in either detached or attached styles depending on the development layout. Exact specifications, window styles and whether a property is left or right-handed may differ from plot to plot. Please speak to our sales consultant for specific plot details.

Produced by Vistry Group Design Studio.

When you have finished with this leaflet please recycle it.

NWHT DS11835 / 01.25

Linden
HOMES



The Aldridge

4 bedroom home

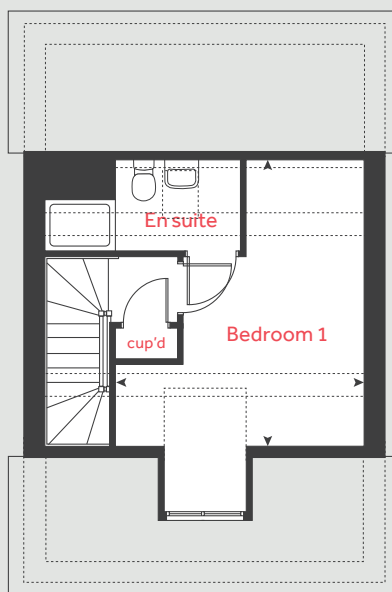
Whiteley Meadows - Phase 9a

Off Botley Road, Whiteley, Hampshire SO30 2HB | 01489 223866

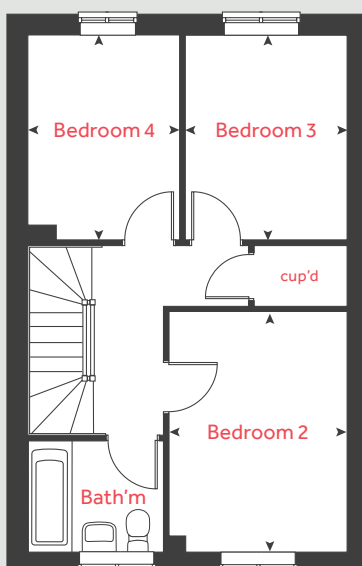
lindenhomes.co.uk

Linden
HOMES

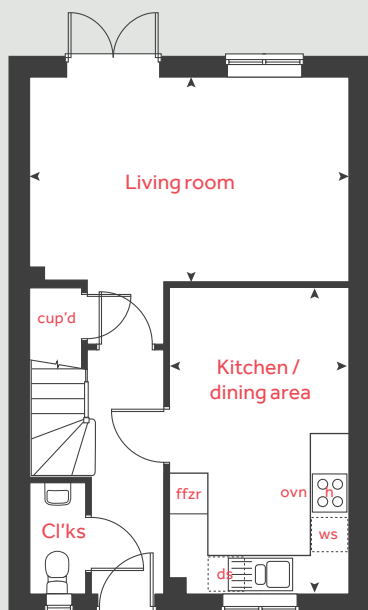
Second floor



First floor



Ground floor



The Aldridge

4 bedroom home

Ground floor	metres	feet / inches
Kitchen / dining area	4.74 x 2.80	15' 7" x 9' 2"
Living room	4.92 x 3.17	16' 2" x 10' 5"

First floor	metres	feet / inches
Bedroom 2	3.72 x 2.75	12' 2" x 9' 0"
Bedroom 3	3.16 x 2.49	10' 4" x 8' 2"
Bedroom 4	3.16 x 2.33	10' 4" x 7' 8"

Second floor	metres	feet / inches
Bedroom 1	4.30 x 3.87	14' 1" x 12' 8"

h	hob	ws	washing machine space
ovn	oven	cup'd	cupboard
ffzr	fridge freezer	◀ ▶	measuring points
ds	dishwasher space		

The Aldridge | Part L Whiteley Meadows |

The floorplan has been produced for illustrative purposes only. Room sizes shown are between arrow points as indicated on plan. The dimensions have tolerances of + or - 50mm and should not be used other than for general guidance. If specific dimensions are required, enquiries should be made to the sales consultant. The floor plans shown are not to scale. Measurements are based on the original drawings. Slight variations may occur during construction.

The illustrations shown are computer generated impressions of how the property may look and are indicative only. External details or finishes may vary on individual plots and homes may be built in either detached or attached styles depending on the development layout. Exact specifications, window styles and whether a property is left or right-handed may differ from plot to plot. Please speak to our sales consultant for specific plot details.

Produced by Vistry Group Design Studio.

When you have finished with this leaflet please recycle it.

NWHT DS12839 / 01.25

Linden

HOMES



The Eveleigh

3 bedroom home

Whiteley Meadows - Phase 9a

Off Botley Road, Whiteley, Hampshire SO30 2HB | 01489 223866

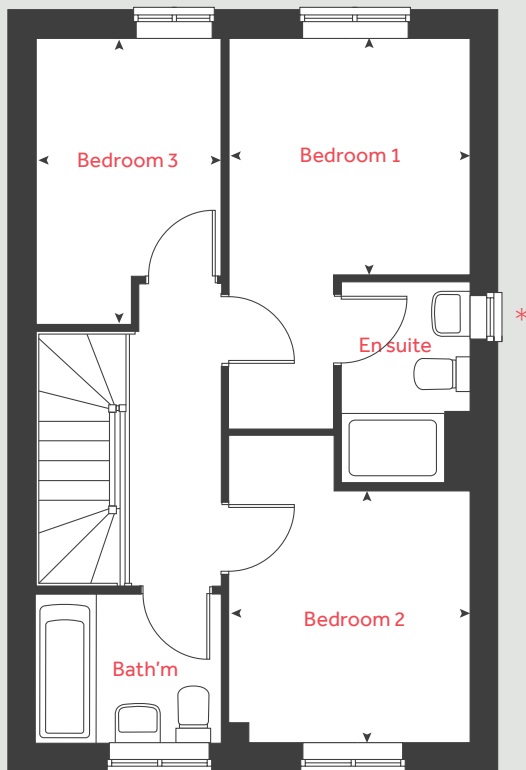
lindenhomes.co.uk

Linden
HOMES

The Eveleigh

3 bedroom home

First floor



Ground floor	metres	feet / inches
Kitchen / dining area	4.82 x 2.80	15' 9" x 9' 2"
Living room	4.95 x 3.19	16' 4" x 10' 6"

First floor

Bedroom 1	2.77 x 2.71	9' 1" x 8' 11"
Bedroom 2	2.89 x 2.77	9' 6" x 9' 1"
Bedroom 3	3.19 x 2.12	10' 6" x 7' 0"

h	hob	ws	washing machine space
ovn	oven	cup'd	cupboard
ffzs	fridge freezer space	◀ ▶	measuring points
ds	dishwasher space		

The Eveleigh | Whiteley Meadows |

The floorplan has been produced for illustrative purposes only. Room sizes shown are between arrow points as indicated on plan. The dimensions have tolerances of + or - 50mm and should not be used other than for general guidance. If specific dimensions are required, enquiries should be made to the sales consultant. The floor plans shown are not to scale. Measurements are based on the original drawings. Slight variations may occur during construction.

The illustrations shown are computer generated impressions of how the property may look and are indicative only. External details or finishes may vary on individual plots and homes may be built in either detached or attached styles depending on the development layout. Exact specifications, window styles and whether a property is left or right-handed may differ from plot to plot. Please speak to our sales consultant for specific plot details.

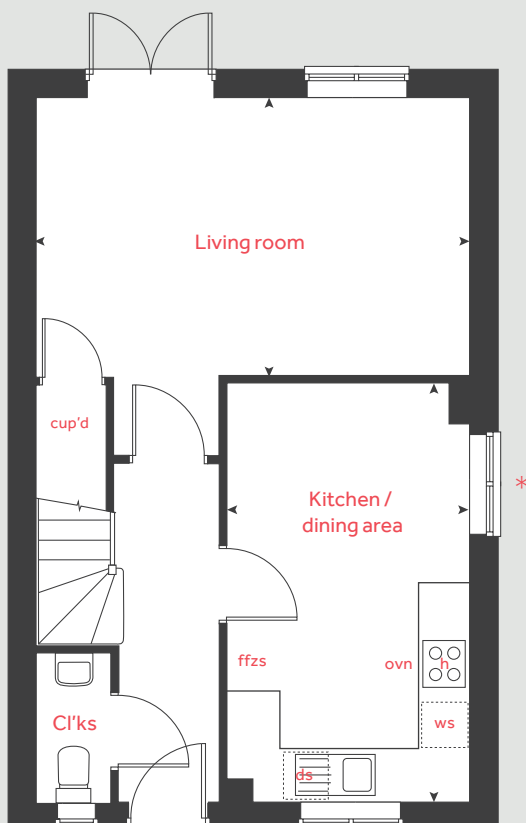
* Windows apply to plot 988 only Please see sales consultant for further details.

Produced by Vistry Group Design Studio.

When you have finished with this leaflet please recycle it.

NWHT DS11835 / 01.25

Ground floor



Linden

HOMES



The Mountford

3 bedroom home

Whiteley Meadows - Phase 9a

Off Botley Road, Whiteley, Hampshire SO30 2HB | 01489 223866

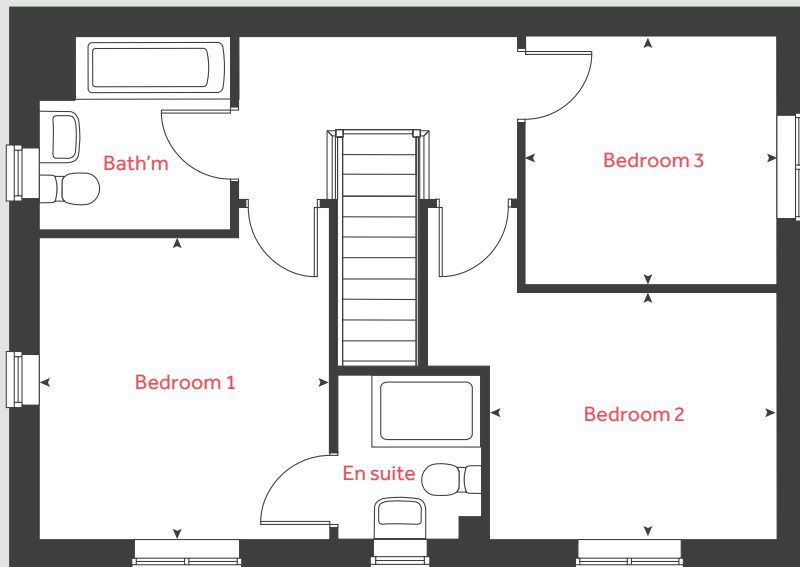
lindenhomes.co.uk

Linden
HOMES

The Mountford

3 bedroom home

First floor



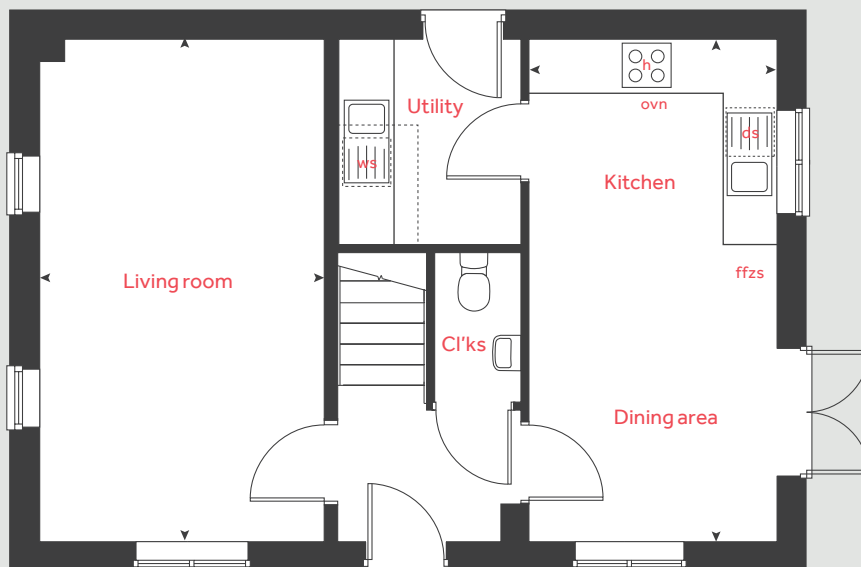
Ground floor	metres	feet / inches
Kitchen / dining area	5.59 x 2.67	18' 4" x 8' 8"
Living room	5.59 x 3.14	18' 4" x 10' 3"

First floor

Bedroom 1	3.35 x 3.17	11' 0" x 10' 4"
Bedroom 2	3.14 x 2.74	10' 3" x 9' 0"
Bedroom 3	2.76 x 2.76	9' 1" x 9' 1"

h	hob	ws	washing machine space
ovn	oven	cup'd	cupboard
ffzs	fridge freezer space	◀ ▶	measuring points
ds	dishwasher space		

Ground floor



The Mountford | Whiteley Meadows |

The floorplan has been produced for illustrative purposes only. Room sizes shown are between arrow points as indicated on plan. The dimensions have tolerances of + or -50mm and should not be used other than for general guidance. If specific dimensions are required, enquiries should be made to the sales consultant. The floor plans shown are not to scale. Measurements are based on the original drawings. Slight variations may occur during construction.

The illustrations shown are computer generated impressions of how the property may look and are indicative only. External details or finishes may vary on individual plots and homes may be built in either detached or attached styles depending on the development layout. Exact specifications, window styles and whether a property is left or right-handed may differ from plot to plot. Please speak to our sales consultant for specific plot details.

Produced by Vistry Group Design Studio.

When you have finished with this leaflet please recycle it.

NWHT DS11835 / 01.25

Linden
HOMES



The Aldridge

4 bedroom home

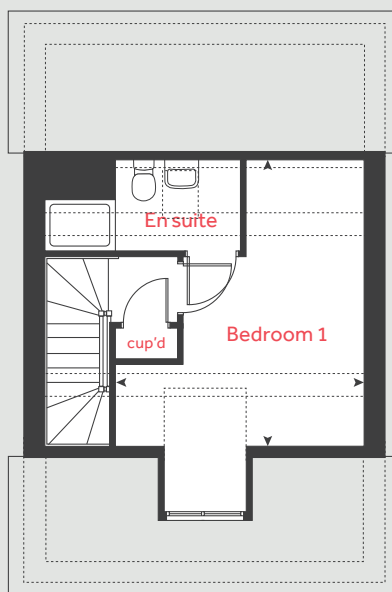
Whiteley Meadows - Phase 9a

Off Botley Road, Whiteley, Hampshire SO30 2HB | 01489 223866

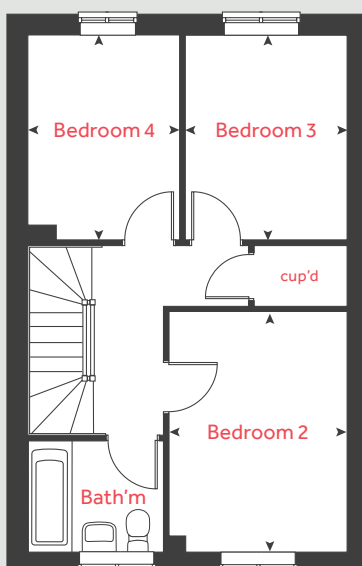
lindenhomes.co.uk

Linden
HOMES

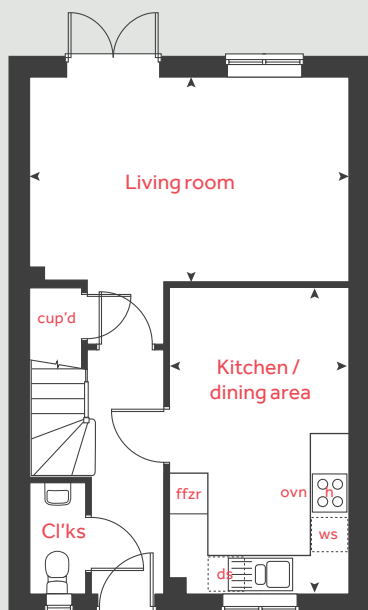
Second floor



First floor



Ground floor



The Aldridge

4 bedroom home

Ground floor	metres	feet / inches
Kitchen / dining area	4.74 x 2.80	15' 7" x 9' 2"
Living room	4.92 x 3.17	16' 2" x 10' 5"

First floor	metres	feet / inches
Bedroom 2	3.72 x 2.75	12' 2" x 9' 0"
Bedroom 3	3.16 x 2.49	10' 4" x 8' 2"
Bedroom 4	3.16 x 2.33	10' 4" x 7' 8"

Second floor	metres	feet / inches
Bedroom 1	4.30 x 3.87	14' 1" x 12' 8"

h	hob	ws	washing machine space
ovn	oven	cup'd	cupboard
ffzr	fridge freezer	◀ ▶	measuring points
ds	dishwasher space		

The Aldridge | Part L Whiteley Meadows |

The floorplan has been produced for illustrative purposes only. Room sizes shown are between arrow points as indicated on plan. The dimensions have tolerances of + or - 50mm and should not be used other than for general guidance. If specific dimensions are required, enquiries should be made to the sales consultant. The floor plans shown are not to scale. Measurements are based on the original drawings. Slight variations may occur during construction.

The illustrations shown are computer generated impressions of how the property may look and are indicative only. External details or finishes may vary on individual plots and homes may be built in either detached or attached styles depending on the development layout. Exact specifications, window styles and whether a property is left or right-handed may differ from plot to plot. Please speak to our sales consultant for specific plot details.

Produced by Vistry Group Design Studio.

When you have finished with this leaflet please recycle it.

NWHT DS12839 / 01.25

Linden

HOMES



Specification

Whiteley Meadows - Phase 9a

Off Botley Road, Whiteley, Hampshire SO30 2HB | 01489 223866

lindenhomes.co.uk

Linden
HOMES

Whiteley Meadows

Whiteley

Use this guide to see what features are included in your new home. Your sales consultant will be happy to discuss the **Enhance** range of extras available.



	3 bedroom The Eveleigh The Mountford	4 bedroom The Mylne The Pembroke The Hardy The Aldridge	5 bedroom The Lutyens The Fletcher	
Kitchen				
Symphony Konzept range kitchen with laminate worktop	<input checked="" type="checkbox"/>	<input checked="" type="checkbox"/>	<input checked="" type="checkbox"/>	
Stainless steel sink and drainer (single bowl) with chrome mixer tap	<input checked="" type="checkbox"/>	<input checked="" type="checkbox"/>	<input checked="" type="checkbox"/>	
Stainless steel sink and drainer (single bowl) with chrome mixer tap in utility		<input checked="" type="checkbox"/>	<input checked="" type="checkbox"/>	
Indesit hob (60cm) with Indesit built-in single under oven, with stainless steel splashback and integrated silver hood	<input checked="" type="checkbox"/>			
Indesit hob (60 cm) with built-in single under oven, with stainless steel splashback and 60cm stainless steel chimney hood		<input checked="" type="checkbox"/>	<input checked="" type="checkbox"/>	
White pendant light holder	<input checked="" type="checkbox"/>	<input checked="" type="checkbox"/>	<input checked="" type="checkbox"/>	
Fridge / freezer space	<input checked="" type="checkbox"/>	<input checked="" type="checkbox"/>	<input checked="" type="checkbox"/>	
Space for integrated dishwasher with plumbing and electrics	<input checked="" type="checkbox"/>	<input checked="" type="checkbox"/>	<input checked="" type="checkbox"/>	
Space for washing machine with plumbing and electrics in kitchen	<input checked="" type="checkbox"/>			
Space for washing machine with plumbing and electrics in utility		<input checked="" type="checkbox"/>	<input checked="" type="checkbox"/>	
Bathrooms and en suite(s)				
Ideal Standard contemporary white Tempo sanitary ware	<input checked="" type="checkbox"/>	<input checked="" type="checkbox"/>	<input checked="" type="checkbox"/>	
Ideal Standard close coupled WC to cloakroom	<input checked="" type="checkbox"/>	<input checked="" type="checkbox"/>	<input checked="" type="checkbox"/>	
Ideal Standard low profile shower tray with glass enclosure in en suite	<input checked="" type="checkbox"/>	<input checked="" type="checkbox"/>	<input checked="" type="checkbox"/>	
Handheld hair wash attachment in bathroom	<input checked="" type="checkbox"/>	<input checked="" type="checkbox"/>	<input checked="" type="checkbox"/>	
Choice of standard Porcelanosa wall tiling (splashback, 450mm height over bath, and full-height to shower cubicle)*	<input checked="" type="checkbox"/>	<input checked="" type="checkbox"/>	<input checked="" type="checkbox"/>	
White batten light holder	<input checked="" type="checkbox"/>	<input checked="" type="checkbox"/>	<input checked="" type="checkbox"/>	
Water waste heat recovery system	<input checked="" type="checkbox"/>	<input checked="" type="checkbox"/>	<input checked="" type="checkbox"/>	
Bedrooms				
Dressing area to bedroom 1			<input checked="" type="checkbox"/>	

☒ Fitted as standard - included in the property
* Subject to stage of construction

	3 bedroom The Eveleigh The Mountford	4 bedroom The Mylne The Pembroke The Hardy The Aldridge	5 bedroom The Lutyens The Fletcher	
Doors and Windows				
Front door with multi-point security locking system and security chain	<input checked="" type="checkbox"/>	<input checked="" type="checkbox"/>	<input checked="" type="checkbox"/>	<input checked="" type="checkbox"/>
PVCu double glazing to windows	<input checked="" type="checkbox"/>	<input checked="" type="checkbox"/>	<input checked="" type="checkbox"/>	<input checked="" type="checkbox"/>
Double glazed PVCu French doors	<input checked="" type="checkbox"/>	<input checked="" type="checkbox"/>	<input checked="" type="checkbox"/>	<input checked="" type="checkbox"/>
Internal doors to be ladder door style pre-primed with Brass Satin finish handles	<input checked="" type="checkbox"/>	<input checked="" type="checkbox"/>	<input checked="" type="checkbox"/>	<input checked="" type="checkbox"/>
Paving outside French door and path to garage personnel door (where applicable)	<input checked="" type="checkbox"/>	<input checked="" type="checkbox"/>	<input checked="" type="checkbox"/>	<input checked="" type="checkbox"/>
General				
PV solar panels	<input checked="" type="checkbox"/>	<input checked="" type="checkbox"/>	<input checked="" type="checkbox"/>	<input checked="" type="checkbox"/>
EV charging point	<input checked="" type="checkbox"/>	<input checked="" type="checkbox"/>	<input checked="" type="checkbox"/>	<input checked="" type="checkbox"/>
White painted walls and smooth white ceilings	<input checked="" type="checkbox"/>	<input checked="" type="checkbox"/>	<input checked="" type="checkbox"/>	<input checked="" type="checkbox"/>
TV point to lounge and family room (where applicable)	<input checked="" type="checkbox"/>	<input checked="" type="checkbox"/>	<input checked="" type="checkbox"/>	<input checked="" type="checkbox"/>
Master telephone socket to lounge and study where applicable	<input checked="" type="checkbox"/>	<input checked="" type="checkbox"/>	<input checked="" type="checkbox"/>	<input checked="" type="checkbox"/>
Ideal combi-boiler with Honeywell heating control and room thermostat(s)	<input checked="" type="checkbox"/>	<input checked="" type="checkbox"/>	<input checked="" type="checkbox"/>	
Ideal system boiler and separate hot water cylinder, with Honeywell heating control and room thermostat(s)				<input checked="" type="checkbox"/>
Thermostatic valves to all radiators (with the exception of rooms with separate thermostat control)	<input checked="" type="checkbox"/>	<input checked="" type="checkbox"/>	<input checked="" type="checkbox"/>	<input checked="" type="checkbox"/>
Contemporary lantern to front door and wiring only to the rear door	<input checked="" type="checkbox"/>	<input checked="" type="checkbox"/>	<input checked="" type="checkbox"/>	<input checked="" type="checkbox"/>
Mains wired smoke detectors with battery back-up	<input checked="" type="checkbox"/>	<input checked="" type="checkbox"/>	<input checked="" type="checkbox"/>	<input checked="" type="checkbox"/>
Battery powered Carbon Monoxide detector (wall mounted) to be provided for each floor	<input checked="" type="checkbox"/>	<input checked="" type="checkbox"/>	<input checked="" type="checkbox"/>	<input checked="" type="checkbox"/>
Power and lighting to garage (where in curtilage of the plot)	<input checked="" type="checkbox"/>	<input checked="" type="checkbox"/>	<input checked="" type="checkbox"/>	<input checked="" type="checkbox"/>
Enclosed fenced rear garden, and garden gate (where applicable)	<input checked="" type="checkbox"/>	<input checked="" type="checkbox"/>	<input checked="" type="checkbox"/>	<input checked="" type="checkbox"/>
NHBC Buildmark cover	<input checked="" type="checkbox"/>	<input checked="" type="checkbox"/>	<input checked="" type="checkbox"/>	<input checked="" type="checkbox"/>
First two years' customer service support from Linden Homes	<input checked="" type="checkbox"/>	<input checked="" type="checkbox"/>	<input checked="" type="checkbox"/>	<input checked="" type="checkbox"/>

The specification shown is correct at the time of production. Linden Homes is continually reviewing and updating the specification on all house / apartment types and therefore reserves the right to change specification details. Photographs depict typical Linden Homes interiors and may include optional upgrades. For full details regarding the current specification and finishes, please speak to our sales consultant.

Vistry Southern region

1A Guildford Business Park, Guildford, Surrey GU2 8XG. T: 01483 705100

Produced by the Vistry Group Design Studio. When you have finished with this leaflet please recycle it.

NWHT DS11835 / 12.24

lindenhomes.co.uk

Linden
HOMES