



Catherington Park Waterloooville

An exciting collection of 1 & 2 bedroom apartments and 2, 3 & 4 bedroom houses in Lovedean, Waterloooville.

Conveniently situated in the East Hampshire village of Lovedean, Catherington Park is situated 2 miles from Waterloooville, within easy reach of idyllic countryside, yet well positioned for Portsmouth, Southampton and London. Lovedean enjoys several local shops, a village hall, primary school and traditional village pub. It offers everything you need for day-to-day living in a picturesque setting. For further amenities, just a short drive from Catherington Park in Waterloooville, you'll find a wider range of shops, schools,

pubs and restaurants, plus a leisure centre with pool, sports clubs and golf course.

With the South Downs National Park nearby, Portsmouth and the south coast less than 10 miles away and a host of local visitor attractions, there are plenty of opportunities for family days out. The nearest station is Rowlands Castle (4 miles) for direct routes to London Waterloo (87 mins).

Catherington Park
Waterloooville PO8 9UB | 02392 802 926
lindenhomes.co.uk

Linden
HOMES

Development layout

4 bedroom home

- The Westminster
Homes 103, 151, 170,
176, 177, 181, 196, 208,
216 & 218
- The Canterbury
Homes 115, 116, 171,
172, 175, 178, 179, 180,
193, 194, 195 & 217

3 bedroom home

- The York
Home 132
- The Lichfield
Homes 117, 173, 204
& 212
- The Lincoln
Homes 202, 203, 206
& 207
- The Clifton
Home 214
- The Rochester
Homes 101, 105, 106,
108, 112, 113, 125,
127, 129, 133, 138,
201 & 211
- The Durham
Home 198
- The Winchester
Homes 100, 104, 114,
126 & 128
- The Kirkwall
Homes 139 & 140
- The Chelmsford
Homes 102, 123 & 124
- The Chester
Homes 118, 174, 205,
213 & 215
- The Gloucester
Home 131

2 bedroom home

- The Salisbury
Homes 107, 109, 110,
111, 130, 134, 135,
136, 137, 197, 199, 200
& 210
- The Ripon
Homes 186 & 209

1 & 2 bedroom apartments

- Wilcox House
Homes 182, 183, 184 & 185

Affordable Housing *

- 2 bedroom homes
- 3 bedroom homes
- 4 bedroom homes

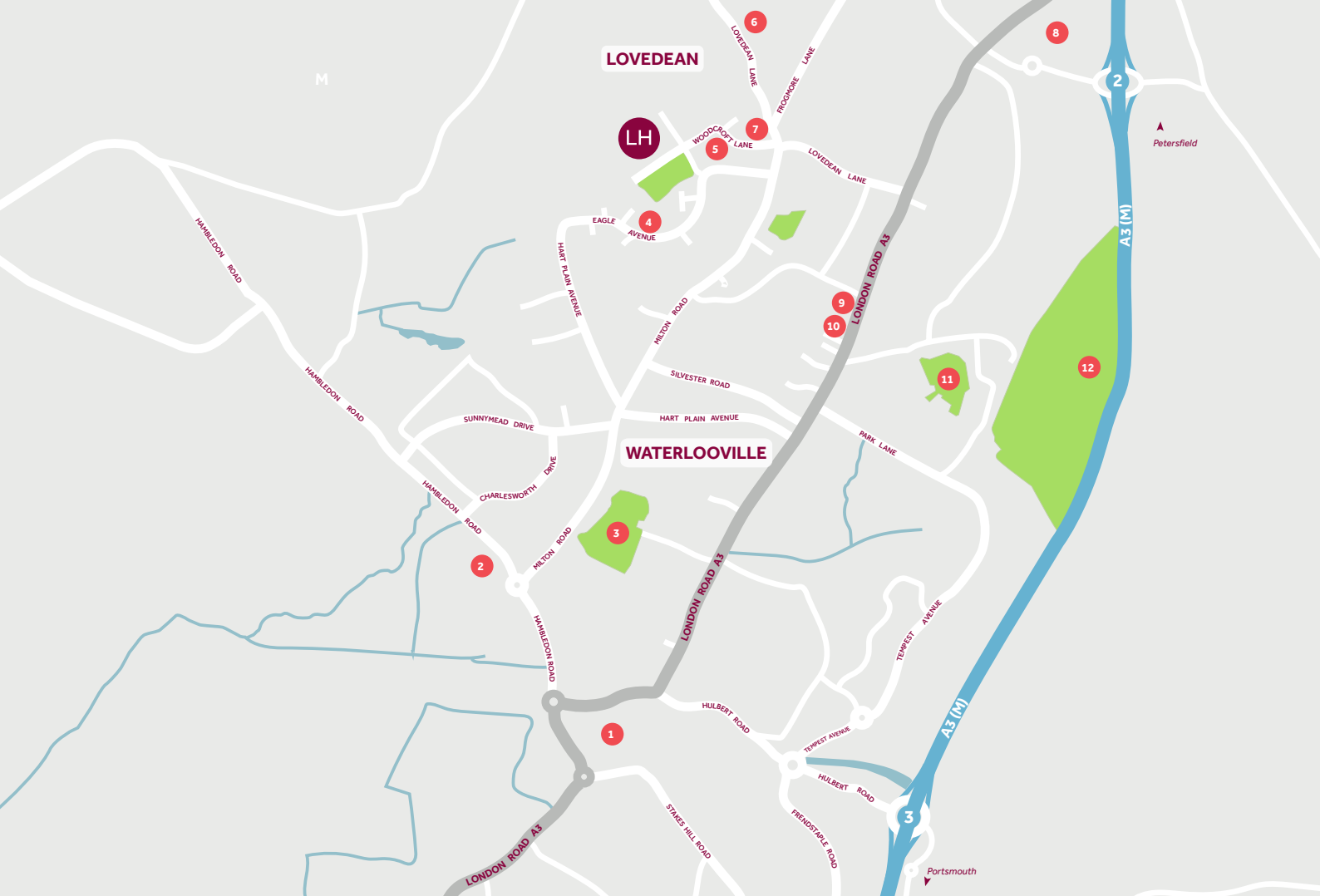
- BCP

Bin Collection Point
- V

Visitor Parking Space
- Garage Entrance
- Shed
- LEAP

Local Equipped Area of Play
- Bollards (Emergency Access only)

Not to scale. Trees and landscaping are indicative only and may alter during construction. The trees, shrubs and gardens shown are illustrative only. Finishes and materials may vary from those shown here. Please ask your Sales Consultant for specific details.



Around the local neighbourhood

- | | | |
|-------------------------------------|------------------------------------|--------------------------------------|
| 1 Waterloooville Town Centre | 5 Woodcroft Primary School | 9 Cowplain Surgery |
| 2 Horizon Leisure Centre | 6 Lovedean Village Hall | 10 The Spotted Cow Pub |
| 3 Jubilee Park | 7 Tesco Express | 11 Cowplain Activity Centre |
| 4 Acorn Community Centre | 8 Morrisons/ Petrol Station | 12 Waterloooville Golf Course |

Distances shown are by road (Source: Google). Fastest journey times are shown (Source: National Rail Enquiries).
October 2021.



Home 209

The Ripon

2 bedroom home



Home 186

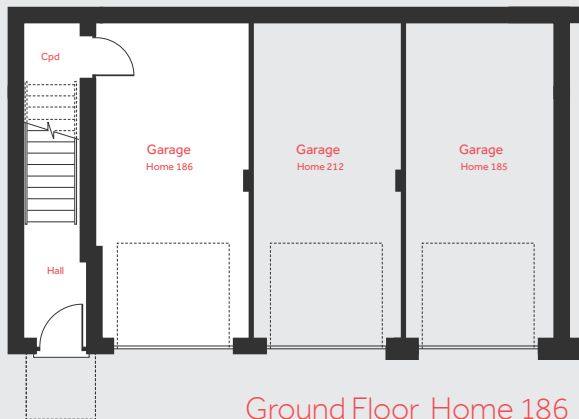
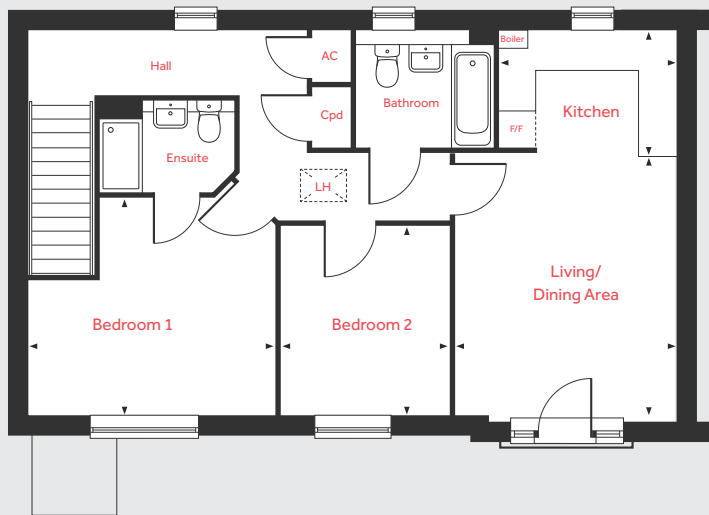
Catherington Park

Waterlooville PO8 9UB | 02392 802 926

lindenhomes.co.uk

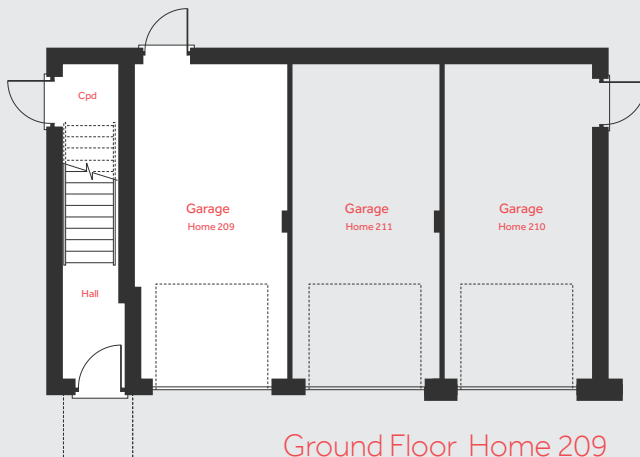
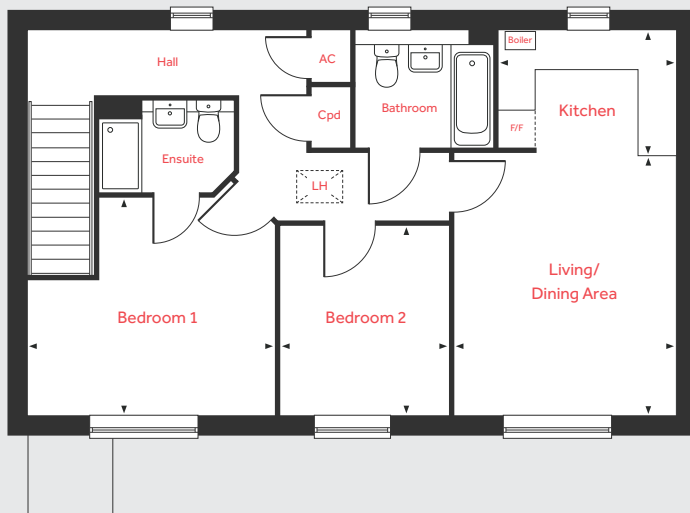
Linden
HOMES

First Floor Home 186



Ground Floor Home 186

First Floor Home 209



Ground Floor Home 209

The Ripon

2 bedroom home

First Floor Home 186

Living/Dining Area

4.41m x 3.63m 14'5" x 11'11"

Kitchen

2.90m x 2.01m 9'6" x 6'7"

Bedroom 1

4.04m x 3.56m 13'3" x 11'8"

Bedroom 2

3.09m x 2.78m 10'2" x 9'1"

First Floor Home 209

Living/Dining Area

4.29m x 3.63m 14'1" x 11'11"

Kitchen

2.90m x 2.01m 9'6" x 6'7"

Bedroom 1

4.04m x 3.56m 13'3" x 11'8"

Bedroom 2

3.09m x 2.78m 10'2" x 9'1"

LH	Loft hatch	F/F	Space for fridge freezer
Cpd	Cupboard	◀ ▶	Measuring points
AC	Airing Cupboard		

Please note, floorplans and dimensions are taken from architectural drawings and are for guidance only. Dimensions stated are within a tolerance of plus or minus 50mm. Overall dimensions are usually stated and there may be projections into these. With our continual improvement policy we constantly review our designs and specification to ensure we deliver the best product to our customers. Computer generated images not to scale. Finishes and materials may vary and landscaping is illustrative only. Kitchen layouts are indicative only and may change. To confirm specific details on our homes please ask your Sales Consultant. October 2021.

Linden
HOMES



The Salisbury 2 bedroom home

Catherington Park

Waterlooville PO8 9UB | 02392 802 926

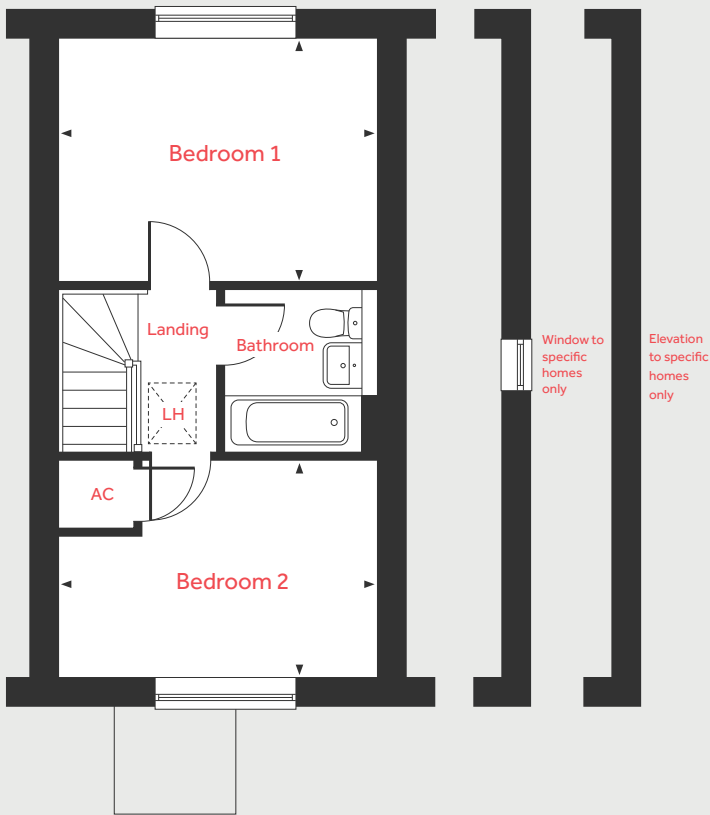
lindenhomes.co.uk

Linden
HOMES

The Salisbury

2 bedroom home

First Floor



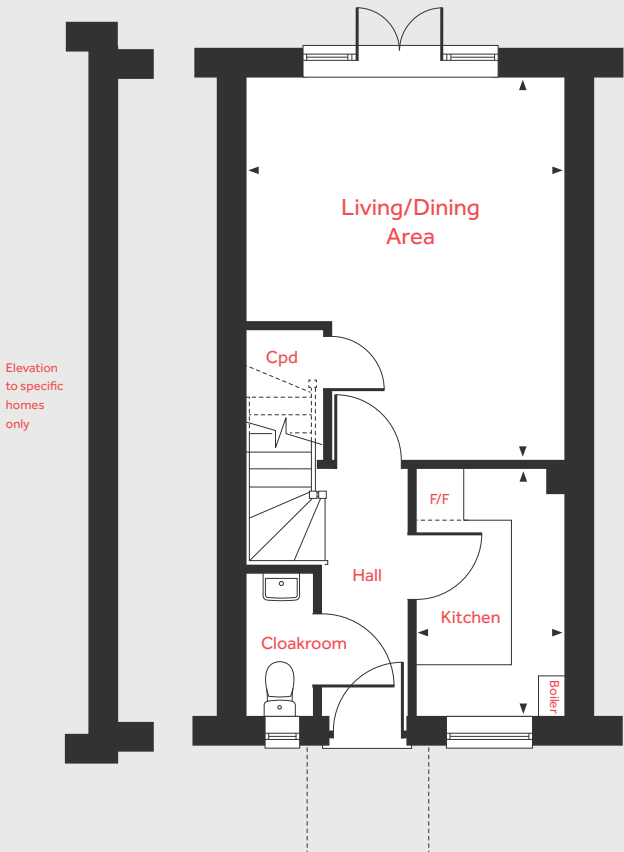
Ground Floor

Living/Dining Area	4.76m x 3.98m	15'7" x 13'1"
Kitchen	3.10m x 1.82m	10'2" x 6'0"

First Floor

Bedroom 1	3.98m x 3.04m	13'1" x 10'0"
Bedroom 2	3.98m x 2.72m	13'1" x 8'11"

Ground Floor



LH	Loft hatch	F/F	Space for fridge freezer
Cpd	Cupboard	◀ ▶	Measuring points
AC	Airing Cupboard		

Please note, floorplans and dimensions are taken from architectural drawings and are for guidance only. Dimensions stated are within a tolerance of plus or minus 50mm. Overall dimensions are usually stated and there may be projections into these. With our continual improvement policy we constantly review our designs and specification to ensure we deliver the best product to our customers. Computer generated images not to scale. Finishes and materials may vary and landscaping is illustrative only. Kitchen layouts are indicative only and may change. To confirm specific details on our homes please ask your Sales Consultant. October 2021.



The Chelmsford

3 bedroom home

Catherington Park

Waterlooville PO8 9UB | 02392 802 926

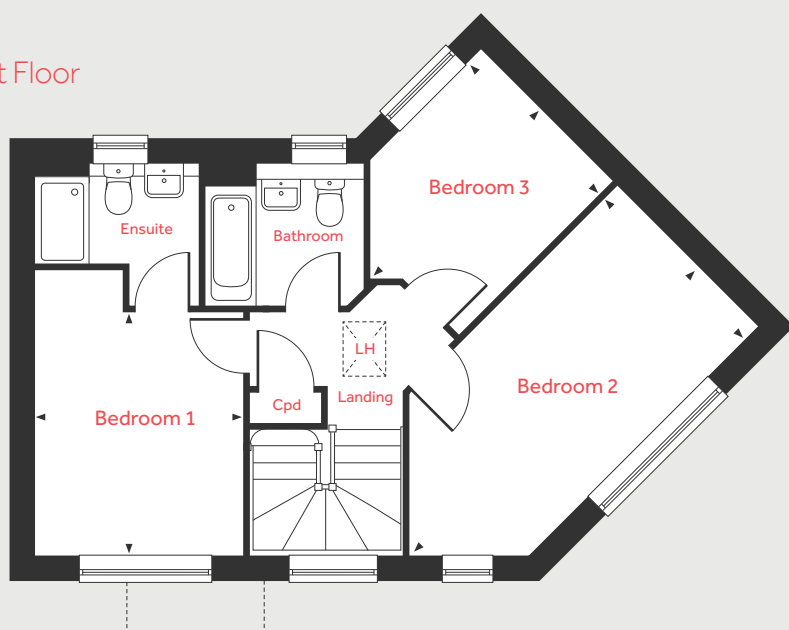
lindenhomes.co.uk

Linden
HOMES

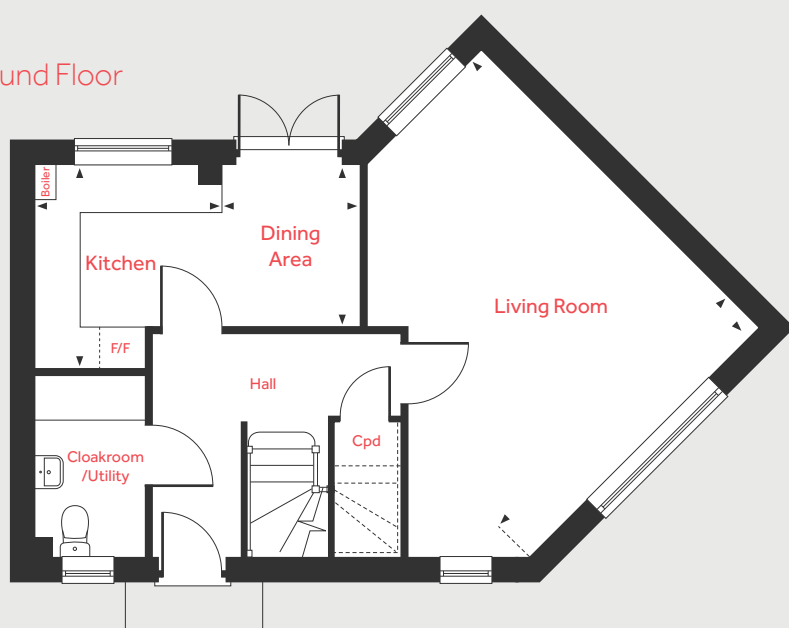
The Chelmsford

3 bedroom home

First Floor



Ground Floor



Ground Floor

Living Room

5.40m x 4.45m 17'9" x 14'7"

Kitchen

2.84m x 2.57m 9'4" x 8'5"

Dining Area

2.22m x 1.88m 7'4" x 6'2"

First Floor

Bedroom 1

3.31m x 2.83m 10'10" x 9'3"

Bedroom 2

5.65m x 2.73m 18'6" x 8'11"

Bedroom 3

3.36m x 2.58m 11'0" x 8'5"

LH	Loft hatch	F/F	Space for fridge freezer
Cpd	Cupboard	◀ ▶	Measuring points

Please note, floorplans and dimensions are taken from architectural drawings and are for guidance only. Dimensions stated are within a tolerance of plus or minus 50mm. Overall dimensions are usually stated and there may be projections into these. With our continual improvement policy we constantly review our designs and specification to ensure we deliver the best product to our customers. Computer generated images not to scale. Finishes and materials may vary and landscaping is illustrative only. Kitchen layouts are indicative only and may change. To confirm specific details on our homes please ask your Sales Consultant. October 2021.

Linden
HOMES



The Winchester 3 bedroom home

Catherington Park

Waterlooville PO8 9UB | 02392 802 926

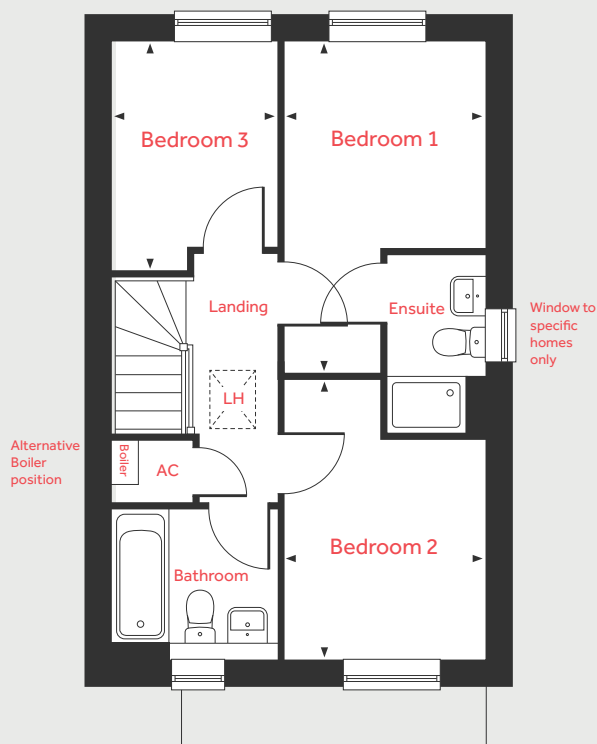
lindenhomes.co.uk

Linden
HOMES

The Winchester

3 bedroom home

First Floor



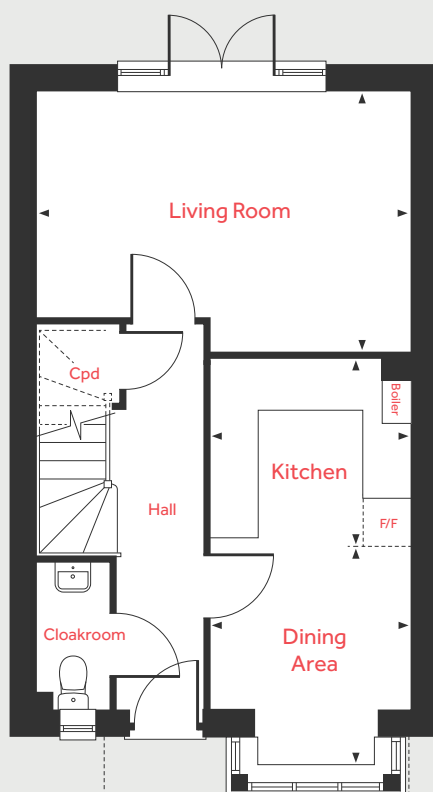
Ground Floor

Living Room	4.80m x 3.40m	15'9" x 11'2"
Dining Area	2.79m x 2.57m	9'2" x 8'5"
Kitchen	2.57m x 2.43m	8'5" x 8'0"

First Floor

Bedroom 1	4.32m x 2.60m	14'2" x 8'7"
Bedroom 2	3.54m x 2.60m	11'7" x 8'7"
Bedroom 3	2.96m x 2.10m	9'8" x 6'11"

Ground Floor



LH	Loft hatch	F/F	Space for fridge freezer
Cpd	Cupboard	◀ ▶	Measuring points
AC	Airing Cupboard		

Please note, floorplans and dimensions are taken from architectural drawings and are for guidance only. Dimensions stated are within a tolerance of plus or minus 50mm. Overall dimensions are usually stated and there may be projections into these. With our continual improvement policy we constantly review our designs and specification to ensure we deliver the best product to our customers. Computer generated images not to scale. Finishes and materials may vary and landscaping is illustrative only. Kitchen layouts are indicative only and may change. To confirm specific details on our homes please ask your Sales Consultant. October 2021.

Linden
HOMES



The Rochester 3 bedroom home

Catherington Park

Waterlooville PO8 9UB | 02392 802 926

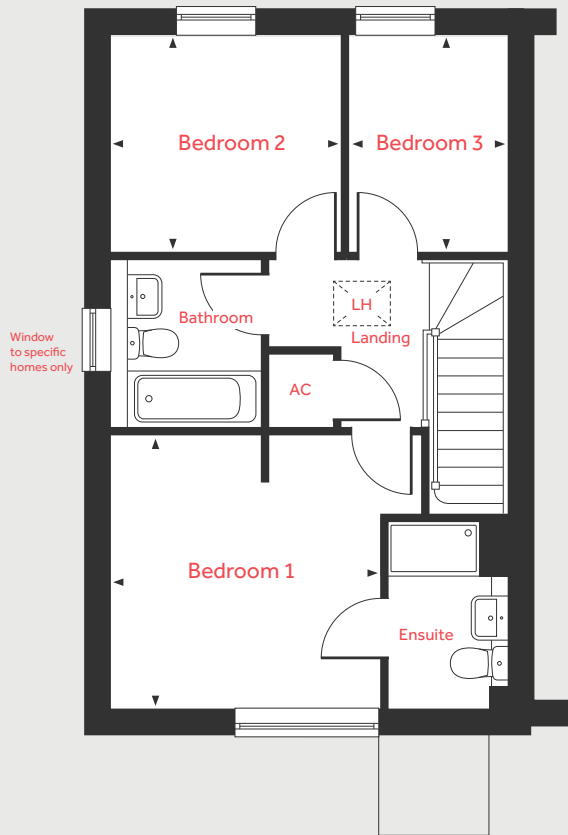
lindenhomes.co.uk

Linden
HOMES

The Rochester

3 bedroom home

First Floor



Ground Floor

Living Room

5.01m x 3.68m 16'5" x 12'1"

Kitchen

3.62m x 3.48m 11'11" x 11'5"

First Floor

Bedroom 1

3.94m x 3.48m 12'11" x 11'5"

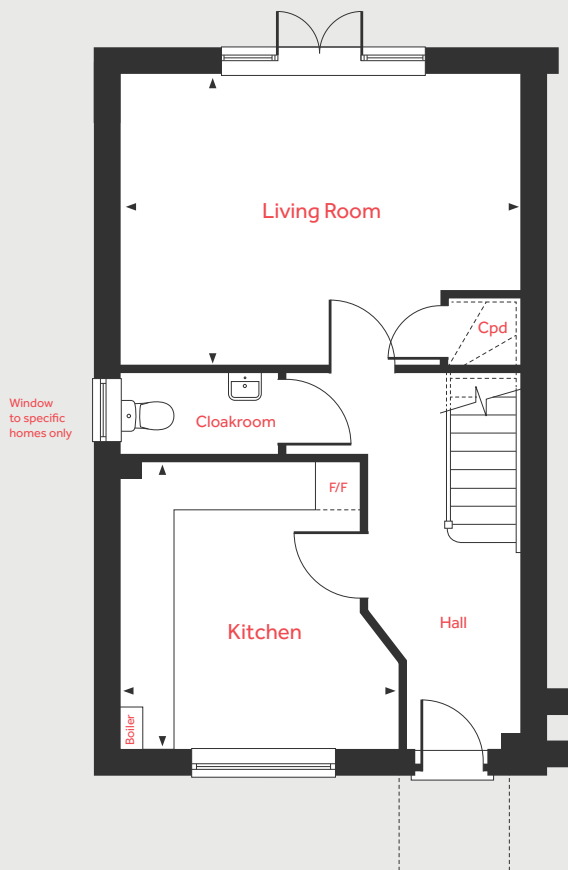
Bedroom 2

2.94m x 2.74m 9'8" x 9'0"

Bedroom 3

2.74m x 1.98m 9'0" x 6'6"

Ground Floor



LH	Loft hatch	F/F	Space for fridge freezer
Cpd	Cupboard	◀ ▶	Measuring points
AC	Airing Cupboard		

Please note, floorplans and dimensions are taken from architectural drawings and are for guidance only. Dimensions stated are within a tolerance of plus or minus 50mm. Overall dimensions are usually stated and there may be projections into these. With our continual improvement policy we constantly review our designs and specification to ensure we deliver the best product to our customers. Computer generated images not to scale. Finishes and materials may vary and landscaping is illustrative only. Kitchen layouts are indicative only and may change. To confirm specific details on our homes please ask your Sales Consultant. October 2021.

Linden

HOMES



The Lichfield 3 bedroom home

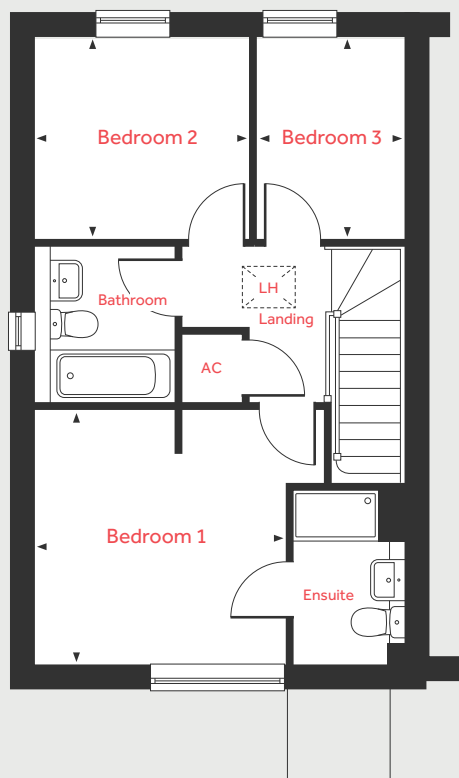
Catherington Park

Waterlooville PO8 9UB | 02392 802 926

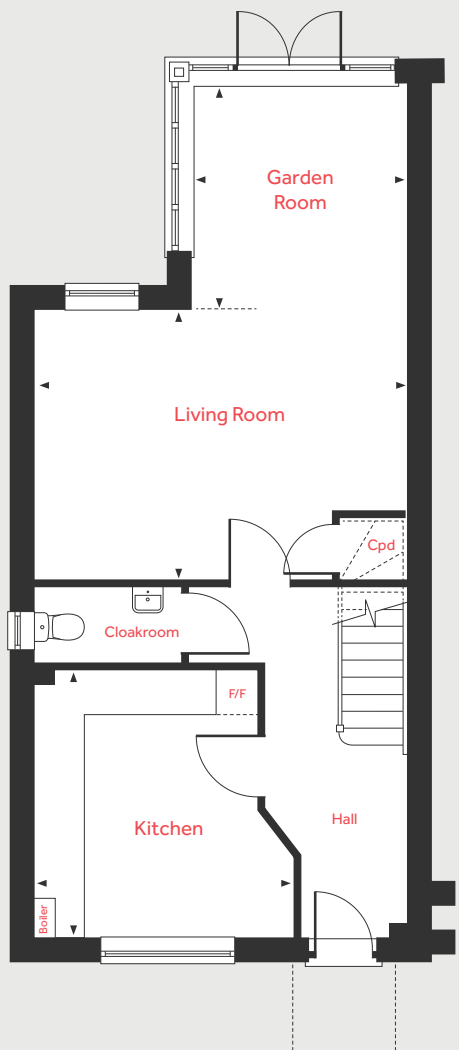
lindenhomes.co.uk

Linden
HOMES

First Floor



Ground Floor



The Lichfield

3 bedroom home

Ground Floor

Garden Room	2.96m x 2.89m	9'9" x 9'6"
Living Room	5.01m x 3.68m	16'5" x 12'1"
Kitchen	3.62m x 3.48m	11'11" x 11'5"

First Floor

Bedroom 1	3.94m x 3.48m	12'11" x 11'5"
Bedroom 2	2.94m x 2.74m	9'8" x 9'0"
Bedroom 3	2.74m x 1.98m	9'0" x 6'6"

LH	Loft hatch	F/F	Space for fridge freezer
Cpd	Cupboard	◀ ▶	Measuring points
AC	Airing Cupboard		

Please note, floorplans and dimensions are taken from architectural drawings and are for guidance only. Dimensions stated are within a tolerance of plus or minus 50mm. Overall dimensions are usually stated and there may be projections into these. With our continual improvement policy we constantly review our designs and specification to ensure we deliver the best product to our customers. Computer generated images not to scale. Finishes and materials may vary and landscaping is illustrative only. Kitchen layouts are indicative only and may change. To confirm specific details on our homes please ask your Sales Consultant. October 2021.

Linden

HOMES



The Lincoln 3 bedroom home

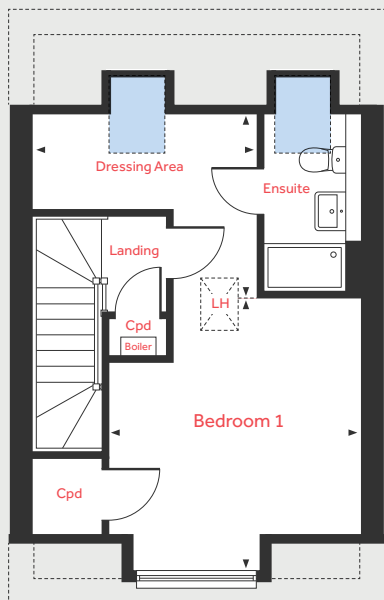
Catherington Park

Waterlooville PO8 9UB | 02392 802 926

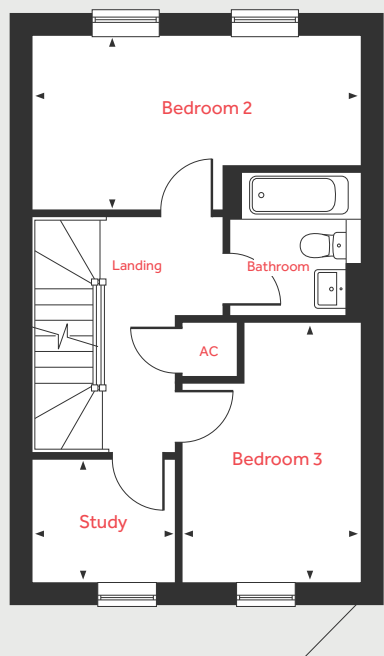
lindenhomes.co.uk

Linden
HOMES

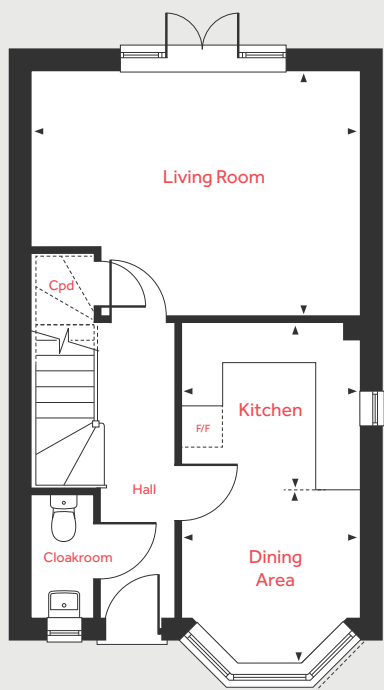
Second Floor



First Floor



Ground Floor



The Lincoln

3 bedroom home

Ground Floor

Living Room

4.80m x 3.64m

15'9" x 11'11"

Kitchen

2.61m x 2.33m

8'7" x 7'8"

Dining Area

2.64m x 2.61m

8'8" x 8'7"

First Floor

Bedroom 2

4.80m x 2.60m

15'9" x 8'6"

Bedroom 3

3.78m x 2.61m

12'5" x 8'7"

Study

2.10m x 1.77m

6'11" x 5'10"

Second Floor

Bedroom 1

4.00m x 3.69m

13'2" x 12'1"

Dressing Area

3.28m x 2.71m

10'9" x 8'11"

LH	Loft hatch	F/F	Space for fridge freezer
Cpd	Cupboard	◀ ▶	Measuring points
AC	Airing Cupboard	■	Roof Light location

Please note, floorplans and dimensions are taken from architectural drawings and are for guidance only. Dimensions stated are within a tolerance of plus or minus 50mm. Overall dimensions are usually stated and there may be projections into these. With our continual improvement policy we constantly review our designs and specification to ensure we deliver the best product to our customers. Computer generated images not to scale. Finishes and materials may vary and landscaping is illustrative only. Kitchen layouts are indicative only and may change. To confirm specific details on our homes please ask your Sales Consultant. October 2021.

Linden

HOMES



The York 3 bedroom home

Catherington Park

Waterlooville PO8 9UB | 02392 802 926

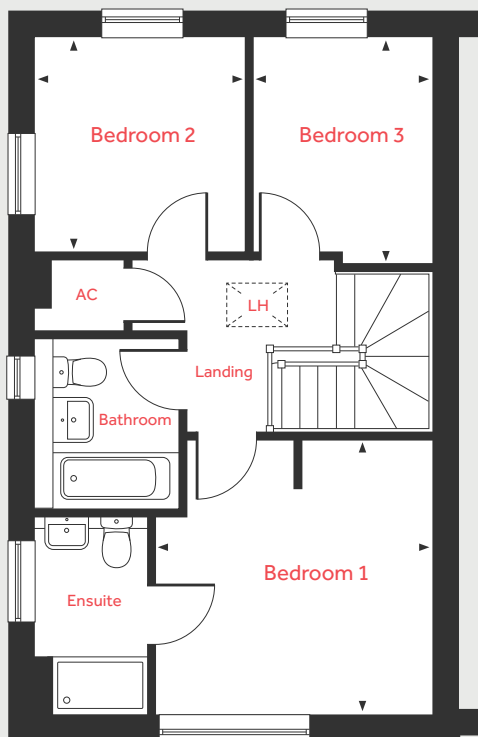
lindenhomes.co.uk

Linden
HOMES

The York

3 bedroom home

First Floor



Ground Floor

Living Room

5.01m x 3.45m 16'5" x 11'4"

Dining Area

2.50m x 2.11m 8'3" x 6'11"

Kitchen

2.55m x 2.70m 8'4" x 8'10"

First Floor

Bedroom 1

3.50m x 3.45m 11'6" x 11'4"

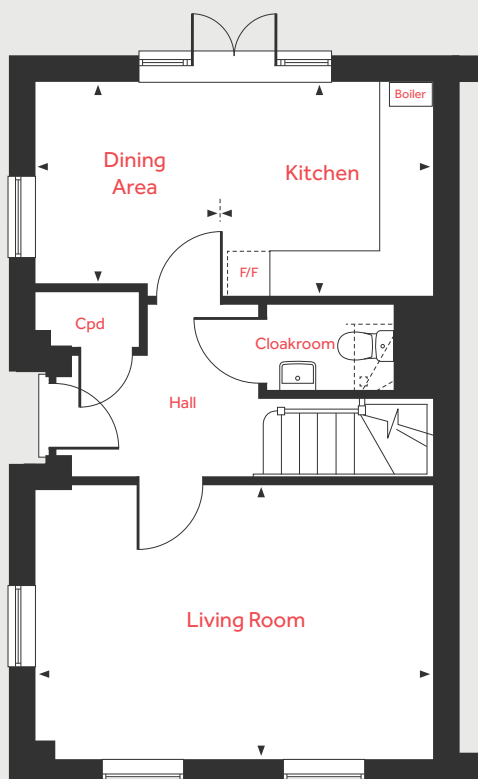
Bedroom 2

2.70m x 2.65m 8'10" x 8'8"

Bedroom 3

2.83m x 2.26m 9'3" x 7'5"

Ground Floor



LH	Loft hatch	F/F	Space for fridge freezer
Cpd	Cupboard	◀ ▶	Measuring points
AC	Airing Cupboard		

Please note, floorplans and dimensions are taken from architectural drawings and are for guidance only. Dimensions stated are within a tolerance of plus or minus 50mm. Overall dimensions are usually stated and there may be projections into these. With our continual improvement policy we constantly review our designs and specification to ensure we deliver the best product to our customers. Computer generated images not to scale. Finishes and materials may vary and landscaping is illustrative only. Kitchen layouts are indicative only and may change. To confirm specific details on our homes please ask your Sales Consultant. October 2021.

Linden
HOMES



The Clifton 3 bedroom home

Catherington Park

Waterlooville PO8 9UB | 02392 802 926

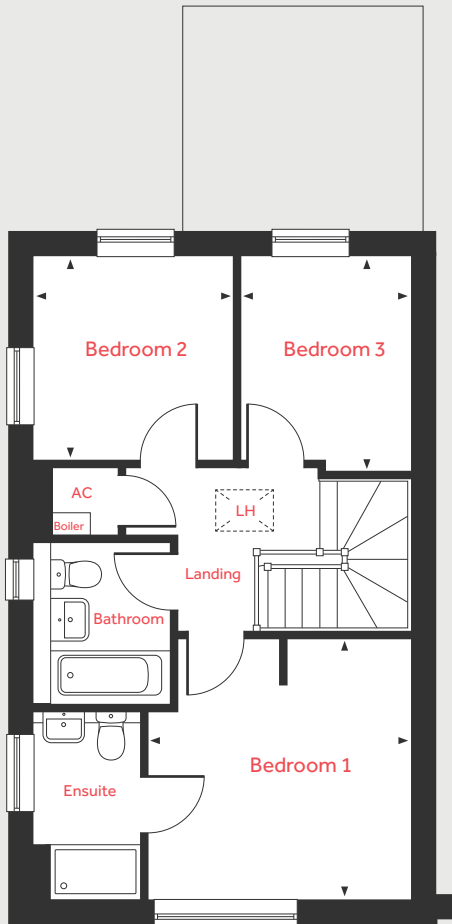
lindenhomes.co.uk

Linden
HOMES

The Clifton

3 bedroom home

First Floor



Ground Floor

Living Room

5.01m x 3.45m 16'5" x 11'4"

Dining Area

2.50m x 2.11m 8'3" x 6'11"

Kitchen/Garden Room

5.66m x 5.01m 18'7" x 16'5"

First Floor

Bedroom 1

3.50m x 3.45m 11'6" x 11'4"

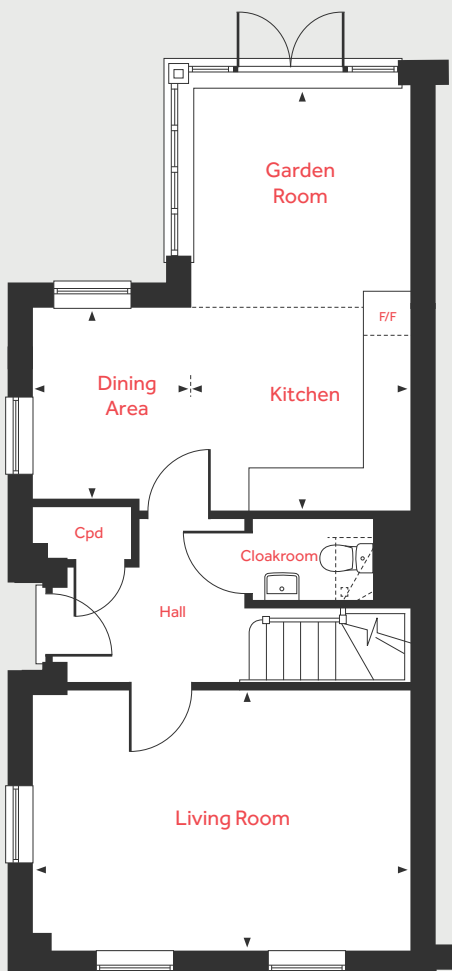
Bedroom 2

2.70m x 2.65m 8'10" x 8'8"

Bedroom 3

2.83m x 2.26m 9'3" x 7'5"

Ground Floor



LH	Loft hatch	F/F	Space for fridge freezer
Cpd	Cupboard	◀ ▶	Measuring points
AC	Airing Cupboard		

Please note, floorplans and dimensions are taken from architectural drawings and are for guidance only. Dimensions stated are within a tolerance of plus or minus 50mm. Overall dimensions are usually stated and there may be projections into these. With our continual improvement policy we constantly review our designs and specification to ensure we deliver the best product to our customers. Computer generated images not to scale. Finishes and materials may vary and landscaping is illustrative only. Kitchen layouts are indicative only and may change. To confirm specific details on our homes please ask your Sales Consultant. October 2021.

Linden

HOMES



The Durham 3 bedroom home

Catherington Park

Waterlooville PO8 9UB | 02392 802 926

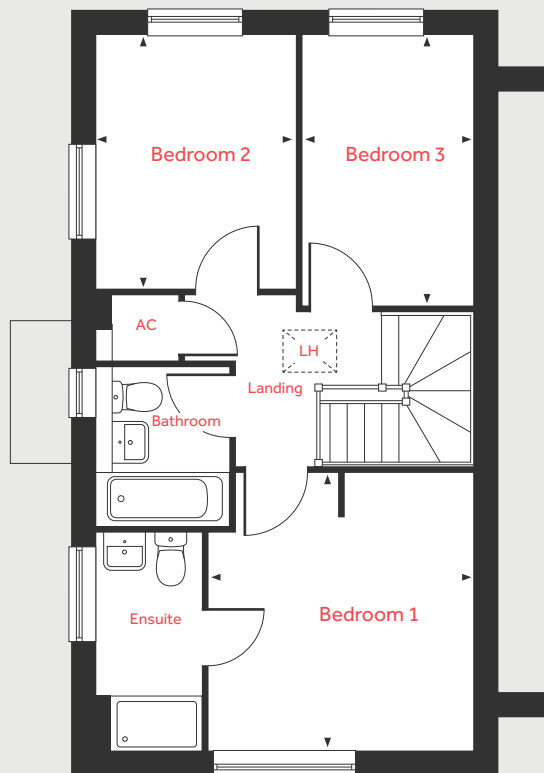
lindenhomes.co.uk

Linden
HOMES

The Durham

3 bedroom home

First Floor



Ground Floor

Living Room

5.01m x 3.69m 16'5" x 12'1"

Dining Area

3.09m x 2.31m 10'2" x 7'7"

Kitchen

3.60m x 2.70m 11'0" x 8'10"

First Floor

Bedroom 1

3.69m x 3.51m 12'1" x 11'6"

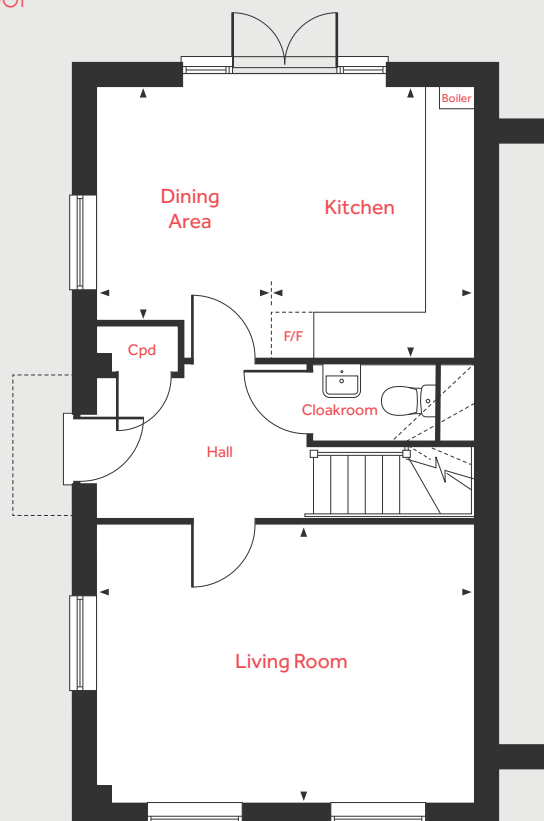
Bedroom 2

3.37m x 2.64m 11'0" x 8'8"

Bedroom 3

3.60m x 2.27m 11'10" x 7'5"

Ground Floor



LH	Loft hatch	F/F	Space for fridge freezer
Cpd	Cupboard	◀ ▶	Measuring points
AC	Airing Cupboard		

Please note, floorplans and dimensions are taken from architectural drawings and are for guidance only. Dimensions stated are within a tolerance of plus or minus 50mm. Overall dimensions are usually stated and there may be projections into these. With our continual improvement policy we constantly review our designs and specification to ensure we deliver the best product to our customers. Computer generated images not to scale. Finishes and materials may vary and landscaping is illustrative only. Kitchen layouts are indicative only and may change. To confirm specific details on our homes please ask your Sales Consultant. October 2021.

Linden
HOMES



The Kirkwall 3 bedroom home

Catherington Park

Waterlooville PO8 9UB | 02392 802 926

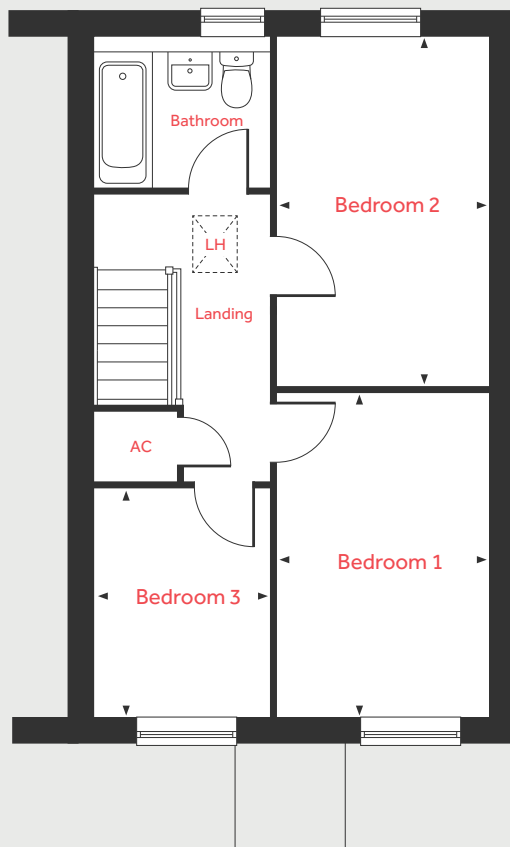
lindenhomes.co.uk

Linden
HOMES

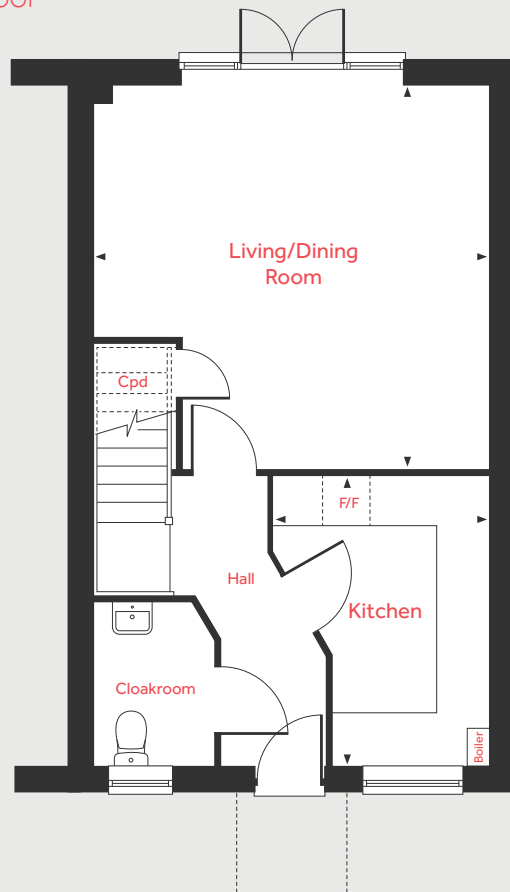
The Kirkwall

3 bedroom home

First Floor



Ground Floor



Ground Floor

Living/Dining Room

4.96m x 4.86m 16'3" x 15'11"

Kitchen

3.61m x 2.41m 11'10" x 7'11"

First Floor

Bedroom 1

4.05m x 2.68m 13'4" x 8'9"

Bedroom 2

4.42m x 2.68m 14'6" x 8'9"

Bedroom 3

2.85m x 2.19m 9'4" x 7'2"

LH	Loft hatch	F/F	Space for fridge freezer
Cpd	Cupboard	◀ ▶	Measuring points
AC	Airing Cupboard		

Please note, floorplans and dimensions are taken from architectural drawings and are for guidance only. Dimensions stated are within a tolerance of plus or minus 50mm. Overall dimensions are usually stated and there may be projections into these. With our continual improvement policy we constantly review our designs and specification to ensure we deliver the best product to our customers. Computer generated images not to scale. Finishes and materials may vary and landscaping is illustrative only. Kitchen layouts are indicative only and may change. To confirm specific details on our homes please ask your Sales Consultant. October 2021.

Linden
HOMES

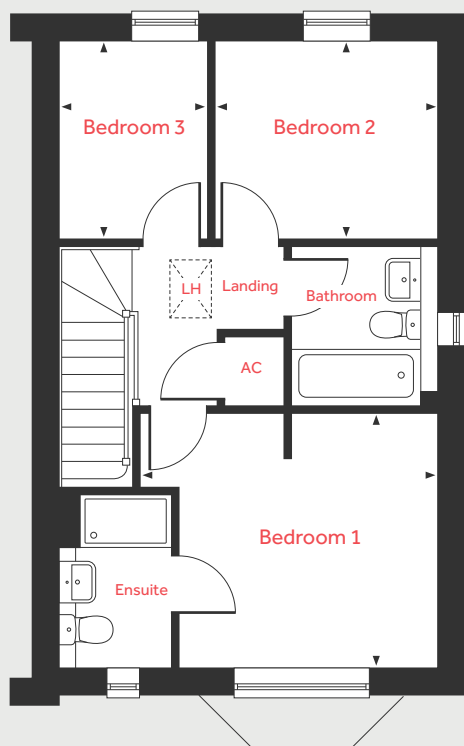


The Chester 3 bedroom home

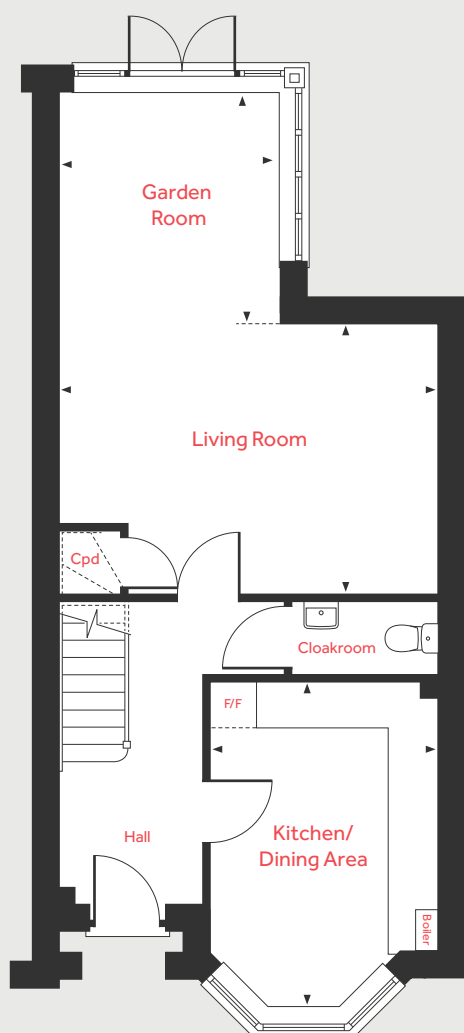
Catherington Park
Waterlooville PO8 9UB | 02392 802 926
lindenhomes.co.uk

Linden
HOMES

First Floor



Ground Floor



The Chester

3 bedroom home

Ground Floor

Garden Room
3.08m x 2.89m 10'1" x 9'6"

Living Room
5.01m x 3.57m 16'5" x 11'8"

Kitchen/Dining Area
4.22m x 3.02m 13'10" x 9'11"

First Floor

Bedroom 1
3.42m x 3.37m 11'2" x 11'1"

Bedroom 2
2.94m x 2.62m 9'8" x 8'7"

Bedroom 3
2.62m x 1.98m 8'7" x 6'6"

LH	Loft hatch	F/F	Integrated fridge freezer
Cpd	Cupboard	◀ ▶	Measuring points
AC	Airing Cupboard		

Please note, floorplans and dimensions are taken from architectural drawings and are for guidance only. Dimensions stated are within a tolerance of plus or minus 50mm. Overall dimensions are usually stated and there may be projections into these. With our continual improvement policy we constantly review our designs and specification to ensure we deliver the best product to our customers. Computer generated images not to scale. Finishes and materials may vary and landscaping is illustrative only. Kitchen layouts are indicative only and may change. To confirm specific details on our homes please ask your Sales Consultant. October 2021.

Linden
HOMES



The Gloucester 3 bedroom home

Catherington Park

Waterlooville PO8 9UB | 02392 802 926

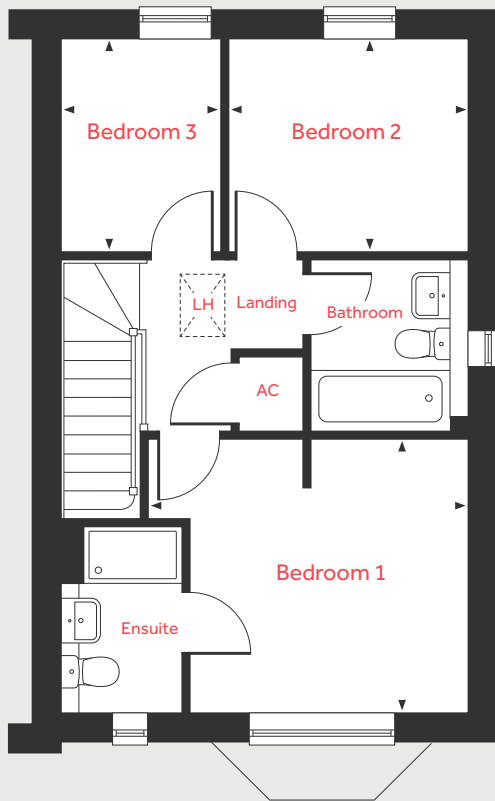
lindenhomes.co.uk

Linden
HOMES

The Gloucester

3 bedroom home

First Floor



Ground Floor

Living Room

5.01m x 3.57m 16'5" x 11'8"

Kitchen/Dining Area

4.22m x 3.02m 13'10" x 9'11"

First Floor

Bedroom 1

3.42m x 3.37m 11'2" x 11'1"

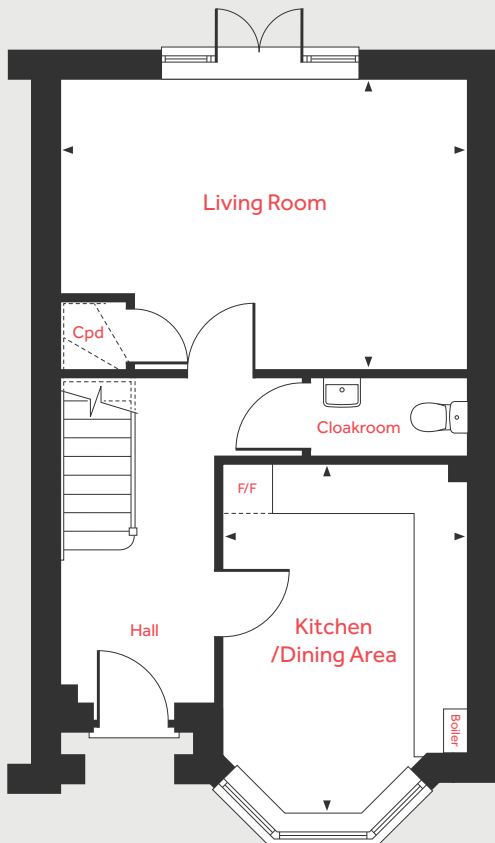
Bedroom 2

2.94m x 2.62m 9'8" x 8'7"

Bedroom 3

2.62m x 1.98m 8'7" x 6'6"

Ground Floor



LH	Loft hatch	F/F	Space for fridge freeze
Cpd	Cupboard	◀ ▶	Measuring points
AC	Airing Cupboard		

Please note, floorplans and dimensions are taken from architectural drawings and are for guidance only. Dimensions stated are within a tolerance of plus or minus 50mm. Overall dimensions are usually stated and there may be projections into these. With our continual improvement policy we constantly review our designs and specification to ensure we deliver the best product to our customers. Computer generated images not to scale. Finishes and materials may vary and landscaping is illustrative only. Kitchen layouts are indicative only and may change. To confirm specific details on our homes please ask your Sales Consultant. October 2021.

Linden
HOMES



The Westminster

4 bedroom home

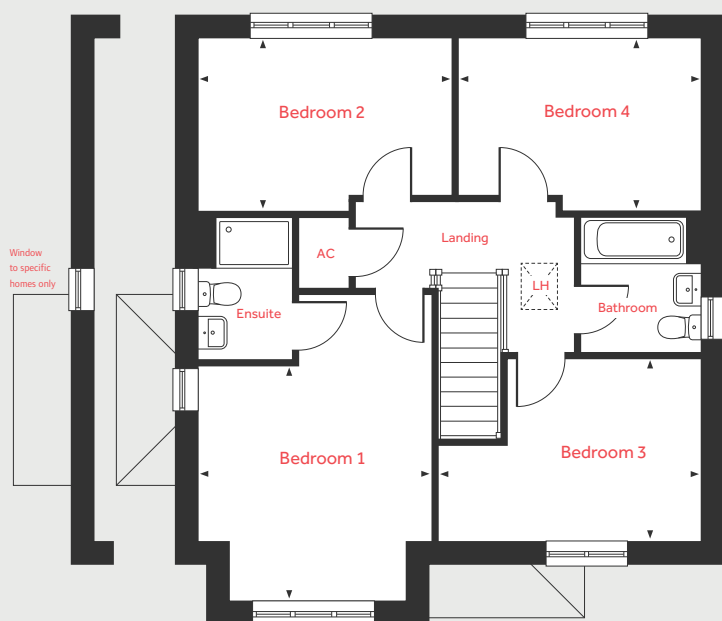
Catherington Park

Waterlooville PO8 9UB | 02392 802 926

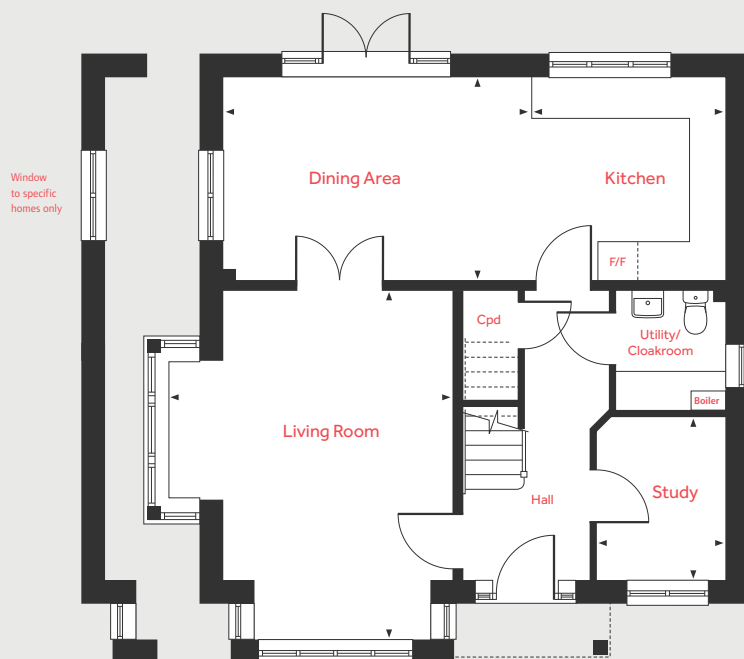
lindenhomes.co.uk

Linden
HOMES

First Floor



Ground Floor



The Westminster

4 bedroom home

Ground Floor

Living Room

5.43m x 4.47m

17'10" x 14'8"

Dining Area

4.81m x 3.18m

15'9" x 10'5"

Kitchen

3.18m x 3.04m

10'5" x 10'0"

Study

2.56m x 2.20m

8'5" x 6'8"

First Floor

Bedroom 1

3.65m x 3.62m

12'0" x 11'11"

Bedroom 2

3.96m x 2.72m

13'0" x 8'11"

Bedroom 3

4.10m x 2.84m

13'6" x 9'4"

Bedroom 4

3.79m x 2.72m

12'5" x 8'11"

LH	Loft hatch	F/F	Integrated fridge freezer
Cpd	Cupboard	◀ ▶	Measuring points
AC	Airing Cupboard		

Please note, floorplans and dimensions are taken from architectural drawings and are for guidance only. Dimensions stated are within a tolerance of plus or minus 50mm. Overall dimensions are usually stated and there may be projections into these. With our continual improvement policy we constantly review our designs and specification to ensure we deliver the best product to our customers. Computer generated images not to scale. Finishes and materials may vary and landscaping is illustrative only. Kitchen layouts are indicative only and may change. To confirm specific details on our homes please ask your Sales Consultant. October 2021.

Linden

HOMES



The Canterbury

4 bedroom home

Catherington Park

Waterlooville PO8 9UB | 02392 802 926

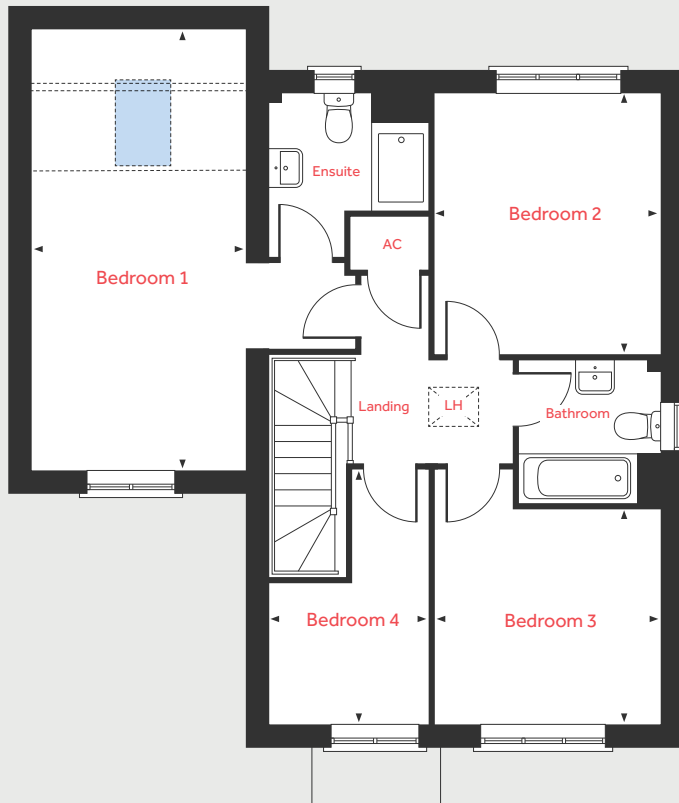
lindenhomes.co.uk

Linden
HOMES

The Canterbury

4 bedroom home

First Floor



Ground Floor

Living Room

5.62m x 3.62m 18'5" x 11'11"

Kitchen/Dining Area

5.29m x 3.24m 17'4" x 10'7"

First Floor

Bedroom 1

5.95m x 3.00m 19'6" x 9'10"

Bedroom 2

3.77m x 3.25m 12'4" x 10'8"

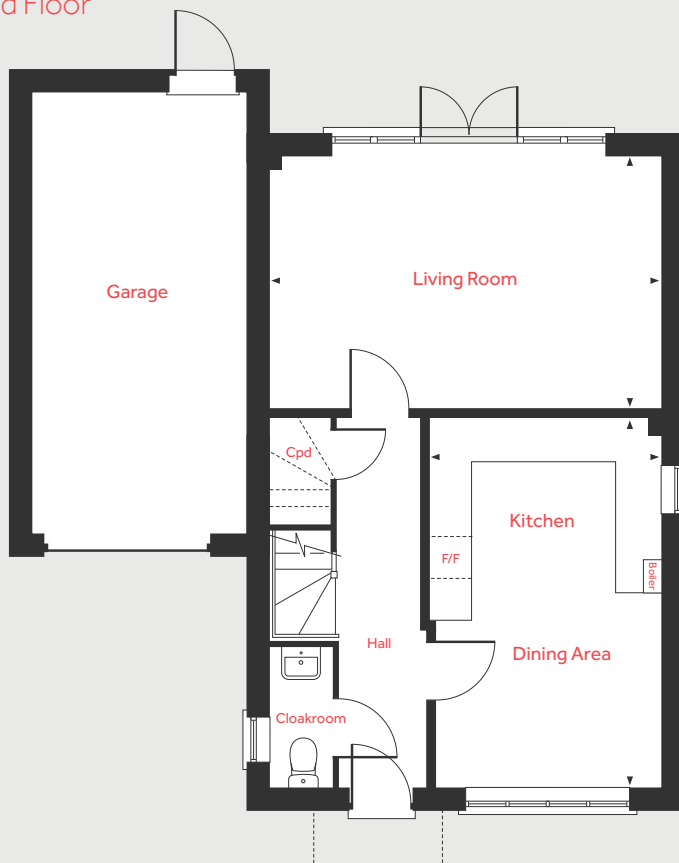
Bedroom 3

3.25m x 3.07m 10'8" x 10'1"

Bedroom 4

2.29m x 2.02m 7'6" x 6'7"

Ground Floor



LH	Loft hatch	▲	Measuring points
Cpd	Cupboard	■	Roof Light location
AC	Airing Cupboard	- - -	Reduced ceiling height
F/F	Space for fridge freezer		

Please note, floorplans and dimensions are taken from architectural drawings and are for guidance only. Dimensions stated are within a tolerance of plus or minus 50mm. Overall dimensions are usually stated and there may be projections into these. With our continual improvement policy we constantly review our designs and specification to ensure we deliver the best product to our customers. Computer generated images not to scale. Finishes and materials may vary and landscaping is illustrative only. Kitchen layouts are indicative only and may change. To confirm specific details on our homes please ask your Sales Consultant. October 2021.

Linden

HOMES



Specification

Homes 214 to 218

We give you so much more

Catherington Park

Waterlooville PO8 9UB | 02392 802 926

lindenhomes.co.uk

Linden
HOMES

Specification

We give you so much more

Each home will be independently surveyed during construction by Premier Guarantee, who will issue their 10 year warranty certificate on completion of the home.

	1 bedroom apartments	2 bedroom apartments	2 bedroom homes	3 bedroom homes	4 bedroom homes
Kitchens					
Symphony fitted kitchen with premium worktops, upstand and stainless steel splashback behind hob	■	■	■	■	■
Drawer unit with soft-close drawers	■	■	■	■	■
Single stainless steel under worktop electric oven	■	■	■	■	■
Stainless steel gas hob	■	■	■	■	■
Integrated extractor hood			■	■	
Chimney hood					■
Space for fridge/freezer	■	■	■	■	■
Space for dishwasher with plumbing and electrical supply	■	■	■	■	■
Space for washer/dryer with plumbing and electrical supply	■	■	■	■	■
Single bowl stainless steel sink with chrome mixer tap	■	■	■	■	■
Ceiling spotlight or similar	■	■	■	■	■
Bathrooms, cloakrooms & ensuites					
Contemporary white sanitaryware with chrome fittings	■	■	■	■	■
450mm height tiling to walls above bath	■	■	■	■	■
Full height tiling to shower enclosure	■	■	■	■	■
Splashback tiling above basin only	■	■	■	■	■
Tiled window cill	■	■	■	■	■
Electrical					
White pendant lights throughout	■	■	■	■	■
TV point in living room	■	■	■	■	■
Telephone BT point to living room	■	■	■	■	■
Telephone BT point to family room					■
White switchplates and sockets	■	■	■	■	■
Other					
Walls in Matt White emulsion	■	■	■	■	■
Ceilings - flush smooth finish in White Supermatt emulsion	■	■	■	■	■
Internal woodwork in gloss white	■	■	■	■	■
White internal doors with polished chrome fittings	■	■	■	■	■
White gloss staircase with white newel caps and handrails	■	■	■	■	■
Gas fired combi boiler	■	■	■	■	■
Gas fired condensing boiler					■
Chrome plated number to external door with multipoint locking system and doorbell	■	■	■	■	■
Low energy external light to front door	■	■	■	■	■

Linden Homes subscribes to the consumer Code of Conduct.

Please refer to www.consumercodeforhomebuilders.com or ask your Sales Consultant for further information.

The specifications of all our homes is correct at the date of going to press but may be subject to change as necessary and without notice. Please ask your Sales Consultant for more information. January 2023.

Linden
HOMES