



Heath Farm Partington

A beautiful collection of 2, 3 & 4 bedroom homes in a tranquil setting.

Perfectly located on the border of leafy Cheshire, with Manchester city centre within easy reach, Heath Farm is a superb place to call home. On your doorstep are amenities including shops, supermarkets, cafés and Ofsted-rated 'Good' schools.

With Altrincham and Manchester so close you have all the shops, entertainment options and places to eat these wonderful areas offer too.

If you want something more leisurely, there are a number of golf clubs nearby and plenty of options for country walks. For commuters, the M62, M60, M56 & M6 are all within simple reach for journeys to Manchester, Stockport and Chester, while Flixton station provides services to Manchester, Sheffield and Liverpool.

And flights across Europe can be caught from Manchester Airport which is just 12 miles away.

Heath Farm

Partington, Greater Manchester M31 4DH | 0161 516 3532

lindenhomes.co.uk/heathfarm

Linden
HOMES

Development layout



4 bedroom home

- The Goodridge
- The Mylne
- The Pembroke
- The Thames

3 bedroom home

- The Elliot
- The Eveleigh
- The Mountford

2 bedroom home

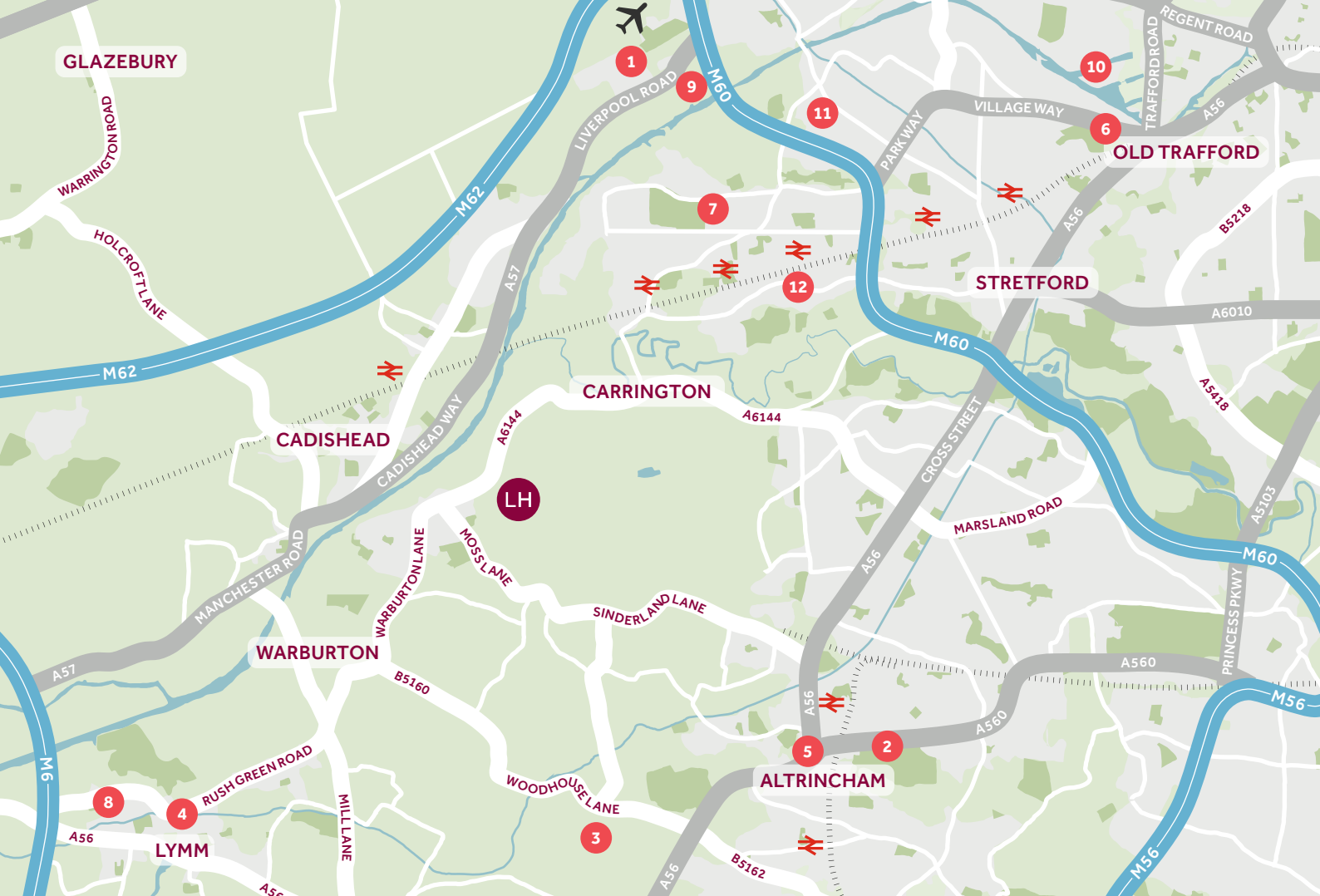
- The Hamilton

*Affordable homes

- 4 bedroom homes
- 3 bedroom homes
- 3 bedroom homes
- 2 bedroom homes
- 2 bedroom homes

BS	Bin Store	SS	Sub Station
CS	Cycle store	▶	Garage Entrance
•	Bollards	▶	Drive Through/ Car Port Entrance

Not to scale. Trees and landscaping are indicative only and may alter during construction. The trees, shrubs and gardens shown are illustrative only. Finishes and materials may vary from those shown here. Please ask your Sales Consultant for specific details.



Around the local neighbourhood

- | | | |
|----------------------------------|---------------------------------|-----------------------------------|
| 1 Manchester Barton City Airport | 5 Altrincham Market | 9 Salford Rugby Stadium (AJ Bell) |
| 2 Altrincham Golf Course | 6 Old Trafford Football Stadium | 10 Salford Quays |
| 3 Dunham Massey | 7 Trafford General Hospital | 11 Trafford Centre |
| 4 Lymm Village | 8 Transpennine Trail | 12 Urmston Train Station |

Distances shown are by road (Source: Google). Fastest journey times are shown (Source: National Rail Enquiries).
1296942/November 2020.

lindenhomes.co.uk/heathfarm

Linden
HOMES



The Hamilton Contemporary

2 bedroom home

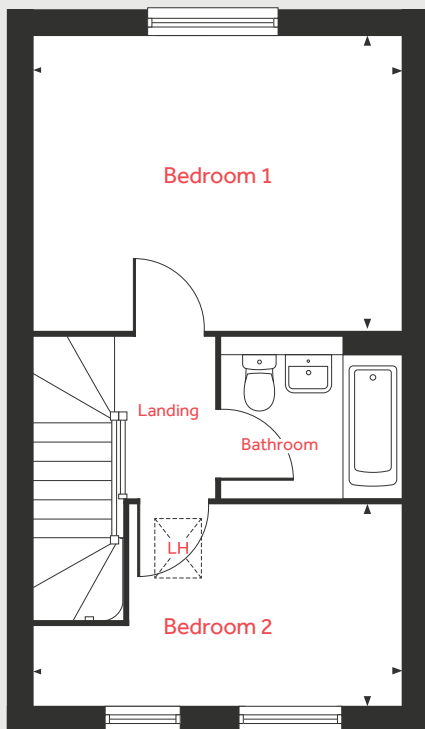
Heath Farm

Partington, Greater Manchester M31 4DH | 0161 516 3532

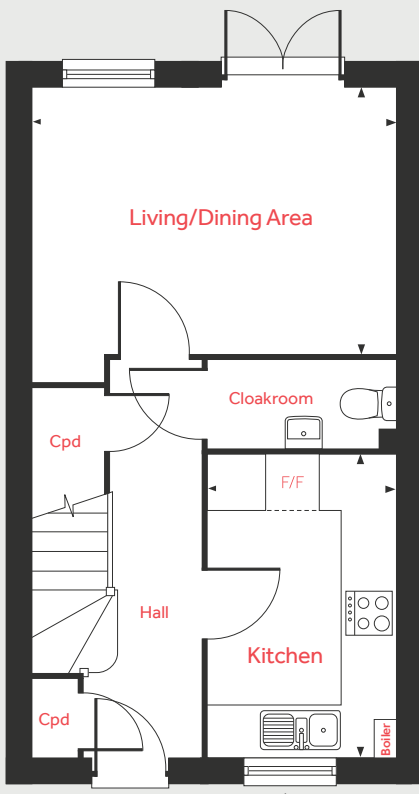
lindenhomes.co.uk/heathfarm

Linden
HOMES

First Floor



Ground Floor



The Hamilton Contemporary

2 bedroom home

Ground Floor

Living/Dining Area

4.43m x 3.22m 14'6" x 10'7"

Kitchen

3.68m x 2.30m 12'1" x 7'7"

First Floor

Bedroom 1

4.43m x 3.57m 14'6" x 11'9"

Bedroom 2

4.43m x 2.45m 14'6" x 8'0"

LH	Loft hatch	F/F	Space for fridge freezer
Cpd	Cupboard	◀ ▶	Measuring points

Please note, floorplans and dimensions are taken from architectural drawings and are for guidance only. Dimensions stated are within a tolerance of plus or minus 50mm. Overall dimensions are usually stated and there may be projections into these. With our continual improvement policy we constantly review our designs and specification to ensure we deliver the best product to our customers. Computer generated images not to scale. Finishes and materials may vary and landscaping is illustrative only. Kitchen layouts are indicative only and may change. To confirm specific details on our homes please ask your Sales Consultant. 1296942/November 2020.

Linden

HOMES



The Eveleigh Contemporary

3 bedroom home

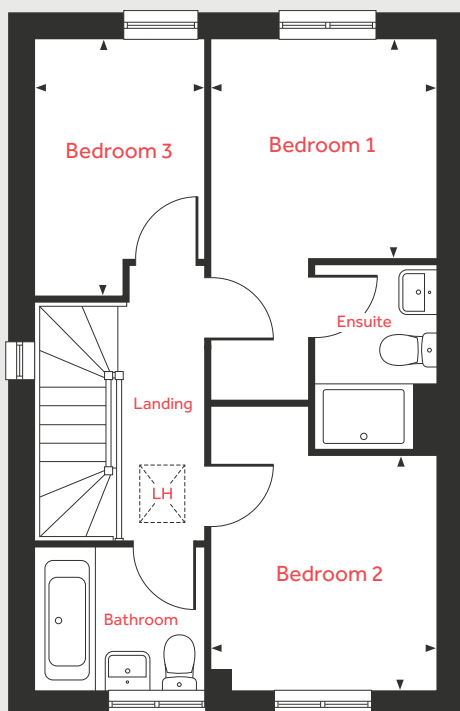
Heath Farm

Partington, Greater Manchester M31 4DH | 0161 516 3532

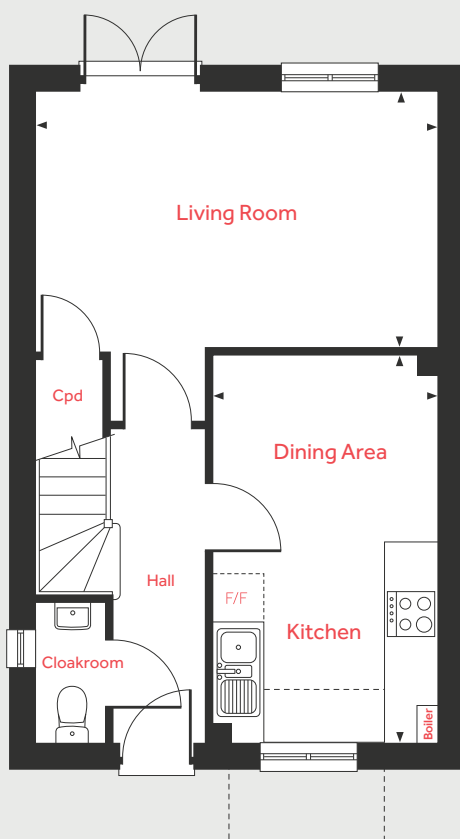
lindenhomes.co.uk/heathfarm

Linden
HOMES

First Floor



Ground Floor



The Eveleigh Contemporary

3 bedroom home

Ground Floor

Living Room

5.03m x 3.25m 16'6" x 10'8"

Kitchen/Dining Area

4.82m x 2.84m 15'10" x 9'4"

First Floor

Bedroom 1

2.83m x 2.76m 9'3" x 9'1"

Bedroom 2

2.94m x 2.83m 9'8" x 9'3"

Bedroom 3

2.76m x 2.16m 9'1" x 7'1"

LH	Loft hatch	◀ ▶	Measuring points
Cpd	Cupboard	- - -	Denotes phase 1 window and worktop
F/F	Space for fridge freezer		

Please note, floorplans and dimensions are taken from architectural drawings and are for guidance only. Dimensions stated are within a tolerance of plus or minus 50mm. Overall dimensions are usually stated and there may be projections into these. With our continual improvement policy we constantly review our designs and specification to ensure we deliver the best product to our customers. Computer generated images not to scale. Finishes and materials may vary and landscaping is illustrative only. Kitchen layouts are indicative only and may change. To confirm specific details on our homes please ask your Sales Consultant. 1296942/November 2020.

Linden

HOMES



The Mountford Contemporary

3 bedroom home

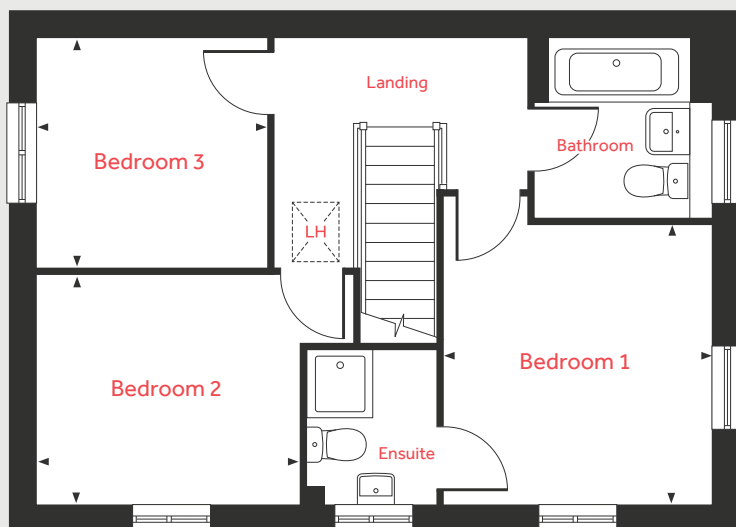
Heath Farm

Partington, Greater Manchester M31 4DH | 0161 516 3532

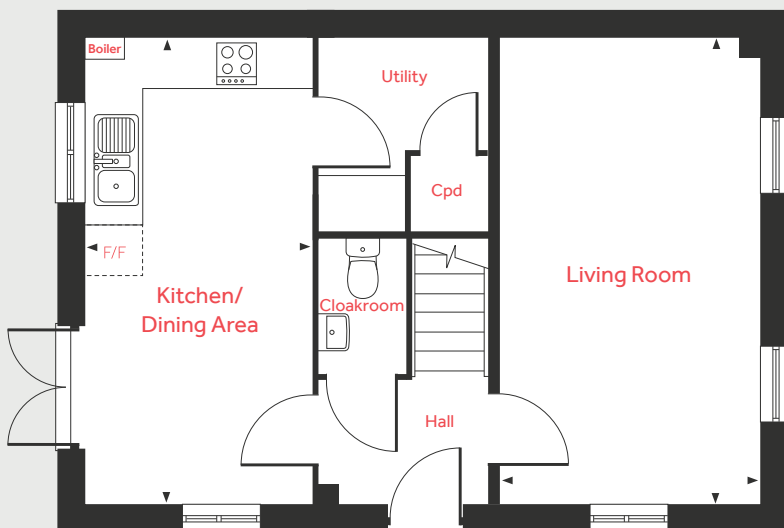
lindenhomes.co.uk/heathfarm

Linden
HOMES

First Floor



Ground Floor



The Mountford Contemporary

3 bedroom home

Ground Floor

Living Room

5.64m x 3.17m 18'6" x 10'5"

Kitchen/Dining Area

5.64m x 2.73m 18'6" x 8'11"

First Floor

Bedroom 1

3.39m x 3.22m 11'1" x 10'7"

Bedroom 2

3.17m x 2.77m 10'5" x 9'1"

Bedroom 3

2.81m x 2.80m 9'3" x 9'2"

LH	Loft hatch	F/F	Space for fridge freezer
Cpd	Cupboard	◀ ▶	Measuring points

Please note, floorplans and dimensions are taken from architectural drawings and are for guidance only. Dimensions stated are within a tolerance of plus or minus 50mm. Overall dimensions are usually stated and there may be projections into these. With our continual improvement policy we constantly review our designs and specification to ensure we deliver the best product to our customers. Computer generated images not to scale. Finishes and materials may vary and landscaping is illustrative only. Kitchen layouts are indicative only and may change. To confirm specific details on our homes please ask your Sales Consultant. 1296942/November 2020.



The Thames Contemporary

4 bedroom home

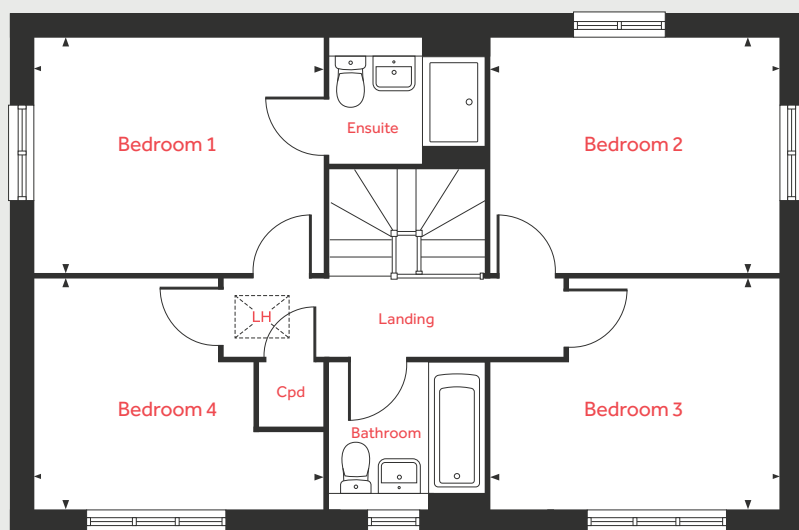
Heath Farm

Partington, Greater Manchester M31 4DH | 0161 516 3532

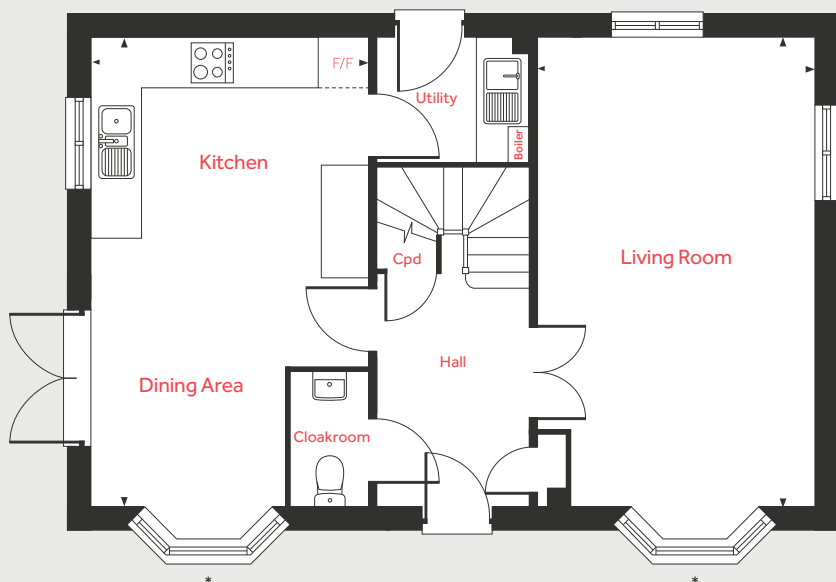
lindenhomes.co.uk/heathfarm

Linden
HOMES

First Floor



Ground Floor



The Thames Contemporary

4 bedroom home

Ground Floor

Living Room

6.20m x 3.67m 20'4" x 12'0"

Kitchen/Dining Area

6.20m x 3.68m 20'4" x 12'1"

First Floor

Bedroom 1

3.72m x 3.07m 12'2" x 10'1"

Bedroom 2

3.70m x 3.07m 12'2" x 10'1"

Bedroom 3

3.72m x 3.05m 12'2" x 10'0"

Bedroom 4

3.70m x 3.05m 12'2" x 10'0"

LH	Loft hatch	F/F	Space for fridge freezer
Cpd	Cupboard	◀ ▶	Measuring points

Please note, floorplans and dimensions are taken from architectural drawings and are for guidance only. Dimensions stated are within a tolerance of plus or minus 50mm. Overall dimensions are usually stated and there may be projections into these. With our continual improvement policy we constantly review our designs and specification to ensure we deliver the best product to our customers. Computer generated images not to scale. Finishes and materials may vary and landscaping is illustrative only. Kitchen layouts are indicative only and may change. To confirm specific details on our homes please ask your Sales Consultant. 1296942/November 2020.

*Bay window differs on phase 1.



The Elliot Contemporary

3 bedroom home

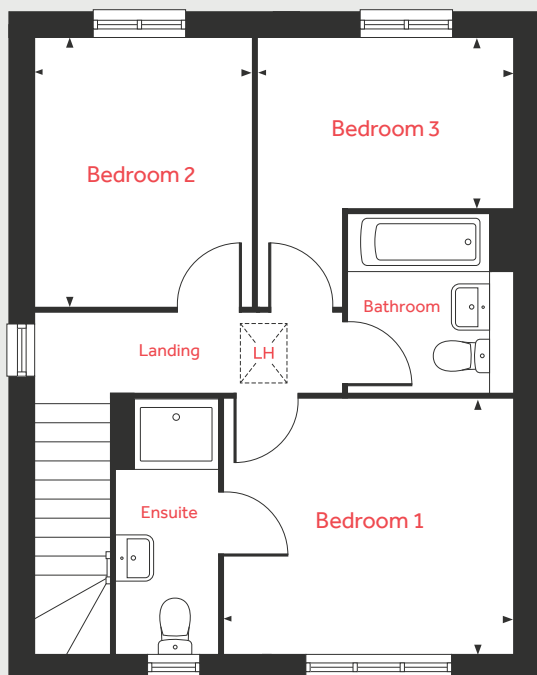
Heath Farm

Partington, Greater Manchester M31 4DH | 0161 516 3532

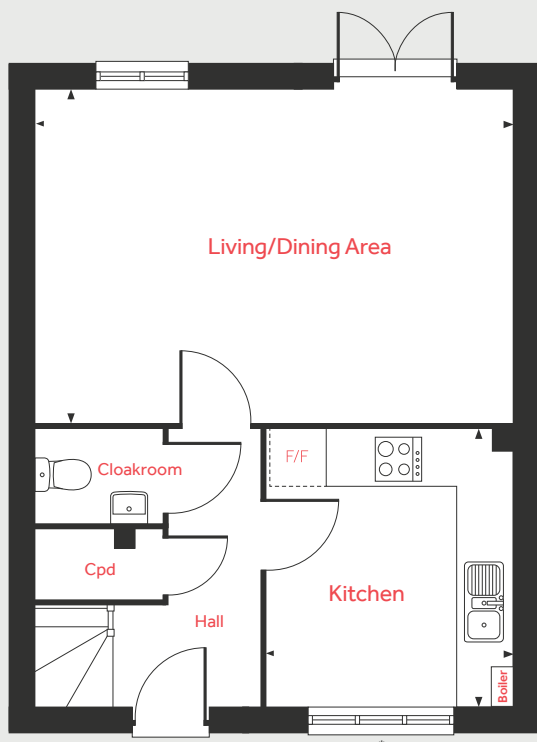
lindenhomes.co.uk/heathfarm

Linden
HOMES

First Floor



Ground Floor



The Elliot Contemporary

3 bedroom home

Ground Floor

Living Room/Dining Area

5.75m x 4.00m 18'10" x 13'1"

Kitchen

3.34m x 2.99m 10'11" x 9'10"

First Floor

Bedroom 1

3.46m x 3.11m 11'4" x 10'2"

Bedroom 2

3.24m x 2.62m 10'8" x 8'7"

Bedroom 3

3.07m x 2.04m 10'1" x 6'8"

LH	Loft hatch	F/F	Space for fridge freezer
Cpd	Cupboard	◀ ▶	Measuring points

Please note, floorplans and dimensions are taken from architectural drawings and are for guidance only. Dimensions stated are within a tolerance of plus or minus 50mm. Overall dimensions are usually stated and there may be projections into these. With our continual improvement policy we constantly review our designs and specification to ensure we deliver the best product to our customers. Computer generated images not to scale. Finishes and materials may vary and landscaping is illustrative only. Kitchen layouts are indicative only and may change. To confirm specific details on our homes please ask your Sales Consultant. 1296942/November 2020.



The Mylne Contemporary

4 bedroom home

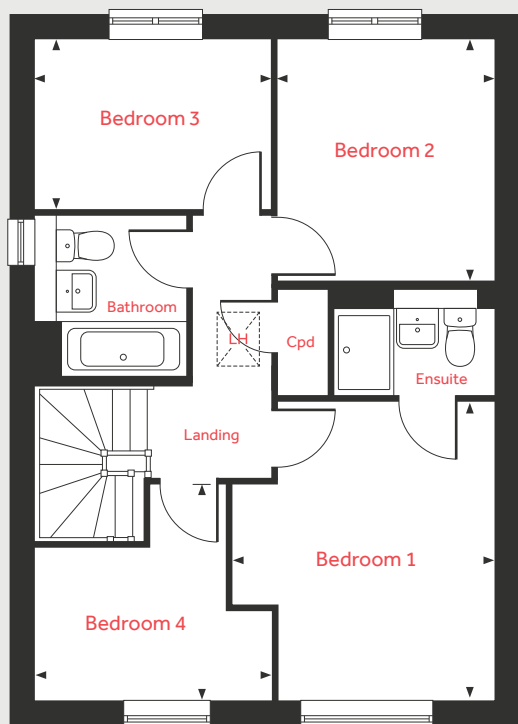
Heath Farm

Partington, Greater Manchester M31 4DH | 0161 516 3532

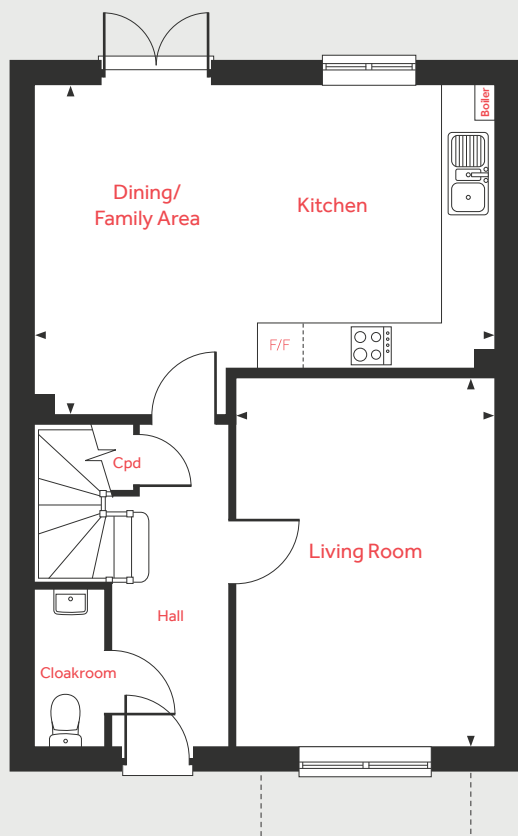
lindenhomes.co.uk/heathfarm

Linden
HOMES

First Floor



Ground Floor



The Mylne Contemporary

4 bedroom home

Ground Floor

Living Room

4.84m x 3.40m 15'11" x 11'2"

Kitchen/Dining/Family Area

6.04m x 4.38m 19'10" x 14'4"

First Floor

Bedroom 1

3.98m x 3.45m 13'1" x 11'4"

Bedroom 2

3.26m x 2.89m 10'8" x 9'6"

Bedroom 3

3.14m x 2.20m 10'4" x 7'3"

Bedroom 4

3.10m x 2.91m 10'2" x 9'7"

LH	Loft hatch	◀ ▶	Measuring points
Cpd	Cupboard	- - -	Denotes phase 1 window
F/F	Integrated fridge freezer		

Please note, floorplans and dimensions are taken from architectural drawings and are for guidance only. Dimensions stated are within a tolerance of plus or minus 50mm. Overall dimensions are usually stated and there may be projections into these. With our continual improvement policy we constantly review our designs and specification to ensure we deliver the best product to our customers. Computer generated images not to scale. Finishes and materials may vary and landscaping is illustrative only. Kitchen layouts are indicative only and may change. To confirm specific details on our homes please ask your Sales Consultant. 1296942/November 2020.

Linden

HOMES



The Hamilton Cottage

2 bedroom home

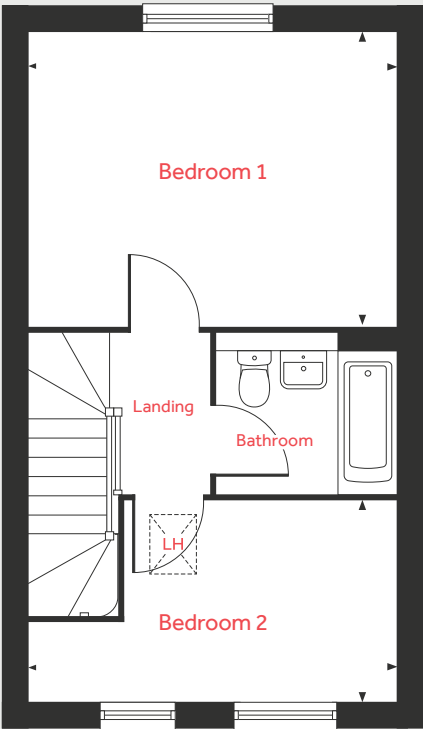
Heath Farm

Partington, Greater Manchester M31 4DH | 0161 516 3532

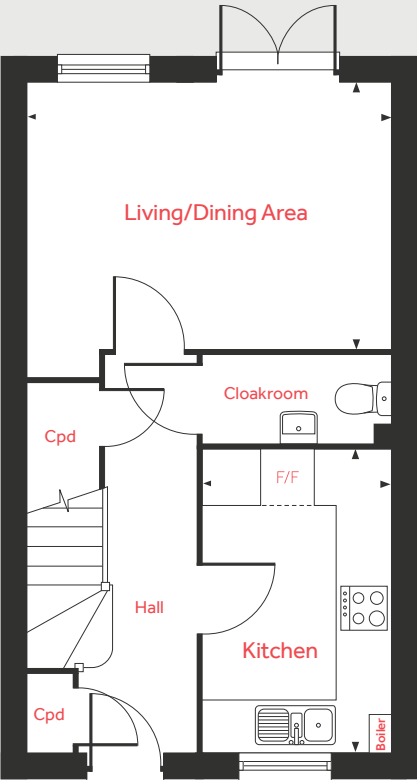
lindenhomes.co.uk/heathfarm

Linden
HOMES

First Floor



Ground Floor



The Hamilton Cottage

2 bedroom home

Ground Floor

Living/Dining Area		
4.43m x 3.22m		14'6" x 10'7"
Kitchen		
3.68m x 2.30m		12'1" x 7'7"

First Floor

Bedroom 1		
4.43m x 3.57m		14'6" x 11'9"
Bedroom 2		
4.43m x 2.45m		14'6" x 8'0"

LH	Loft hatch	F/F	Space for fridge freezer
Cpd	Cupboard	◀ ▶	Measuring points

Please note, floorplans and dimensions are taken from architectural drawings and are for guidance only. Dimensions stated are within a tolerance of plus or minus 50mm. Overall dimensions are usually stated and there may be projections into these. With our continual improvement policy we constantly review our designs and specification to ensure we deliver the best product to our customers. Computer generated images not to scale. Finishes and materials may vary and landscaping is illustrative only. Kitchen layouts are indicative only and may change. To confirm specific details on our homes please ask your Sales Consultant. 1296942/November 2020.



The Eveleigh Cottage

3 bedroom home

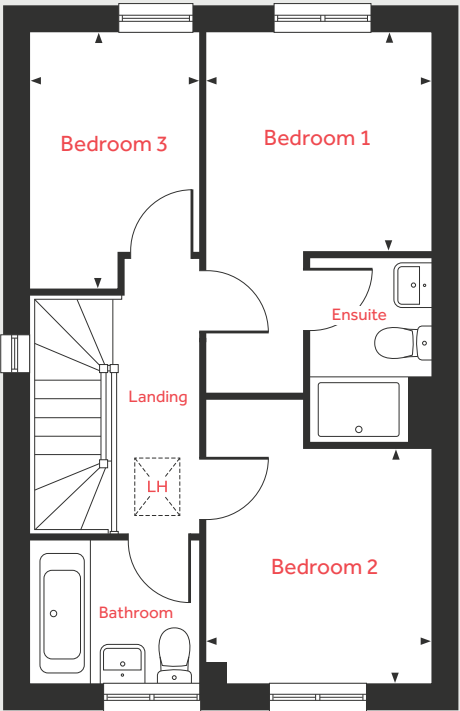
Heath Farm

Partington, Greater Manchester M31 4DH | 0161 516 3532

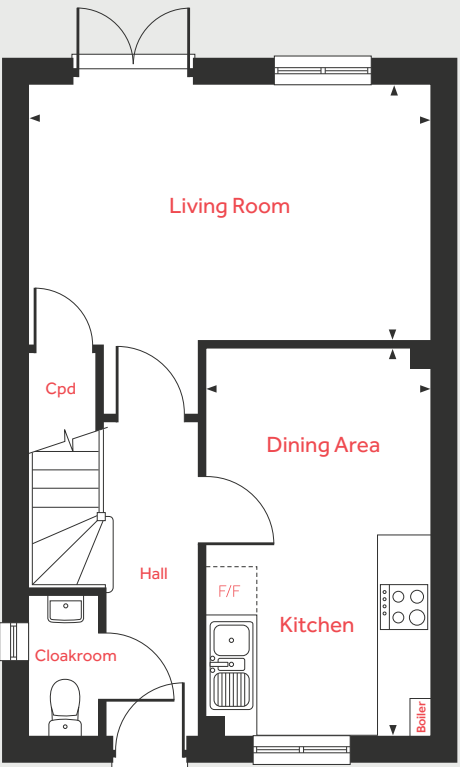
lindenhomes.co.uk/heathfarm

Linden
HOMES

First Floor



Ground Floor



The Eveleigh Cottage

3 bedroom home

Ground Floor

Living Room	5.03m x 3.25m	16'6" x 10'8"
Kitchen/Dining Area	4.82m x 2.84m	15'10" x 9'4"

First Floor

Bedroom 1	2.83m x 2.76m	9'3" x 9'1"
Bedroom 2	2.94m x 2.83m	9'8" x 9'3"
Bedroom 3	2.76m x 2.16m	9'1" x 7'1"

LH	Loft hatch	F/F	Space for fridge freezer
Cpd	Cupboard	◀ ▶	Measuring points

Please note, floorplans and dimensions are taken from architectural drawings and are for guidance only. Dimensions stated are within a tolerance of plus or minus 50mm. Overall dimensions are usually stated and there may be projections into these. With our continual improvement policy we constantly review our designs and specification to ensure we deliver the best product to our customers. Computer generated images not to scale. Finishes and materials may vary and landscaping is illustrative only. Kitchen layouts are indicative only and may change. To confirm specific details on our homes please ask your Sales Consultant. 1296942/November 2020.



The Mountford Cottage

3 bedroom home

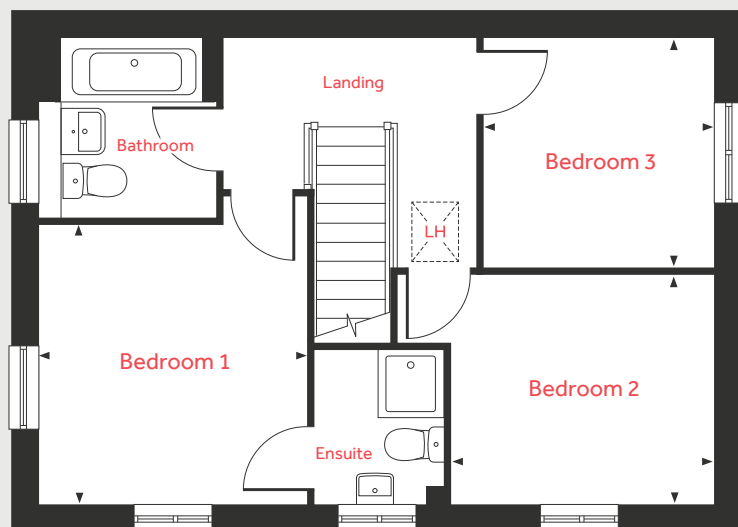
Heath Farm

Partington, Greater Manchester M31 4DH | 0161 516 3532

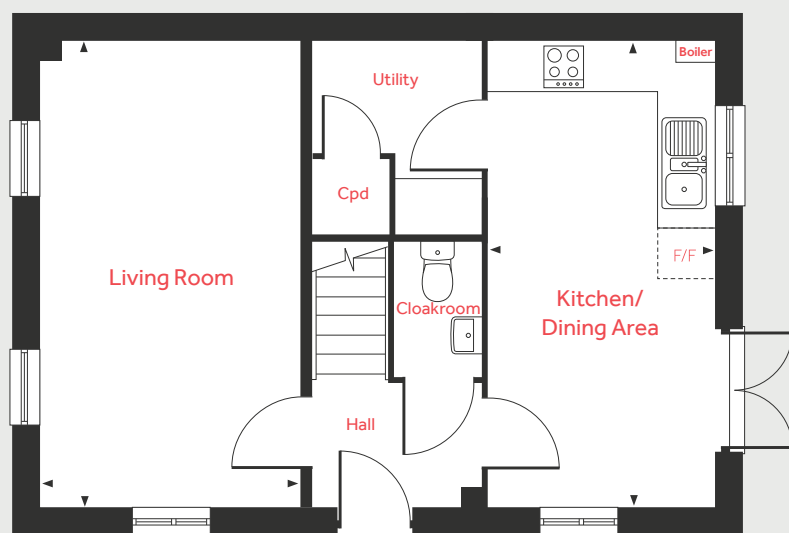
lindenhomes.co.uk/heathfarm

Linden
HOMES

First Floor



Ground Floor



The Mountford Cottage

3 bedroom home

Ground Floor

Living Room

5.64m x 3.17m 18'6" x 10'5"

Kitchen/Dining Area

5.64m x 2.73m 18'6" x 8'11"

First Floor

Bedroom 1

3.39m x 3.22m 11'1" x 10'7"

Bedroom 2

3.17m x 2.77m 10'5" x 9'1"

Bedroom 3

2.81m x 2.80m 9'3" x 9'2"

LH	Loft hatch	F/F	Space for fridge freezer
Cpd	Cupboard	◀ ▶	Measuring points

Please note, floorplans and dimensions are taken from architectural drawings and are for guidance only. Dimensions stated are within a tolerance of plus or minus 50mm. Overall dimensions are usually stated and there may be projections into these. With our continual improvement policy we constantly review our designs and specification to ensure we deliver the best product to our customers. Computer generated images not to scale. Finishes and materials may vary and landscaping is illustrative only. Kitchen layouts are indicative only and may change. To confirm specific details on our homes please ask your Sales Consultant. 1296942/November 2020.

Linden
HOMES



The Elliot Cottage

3 bedroom home

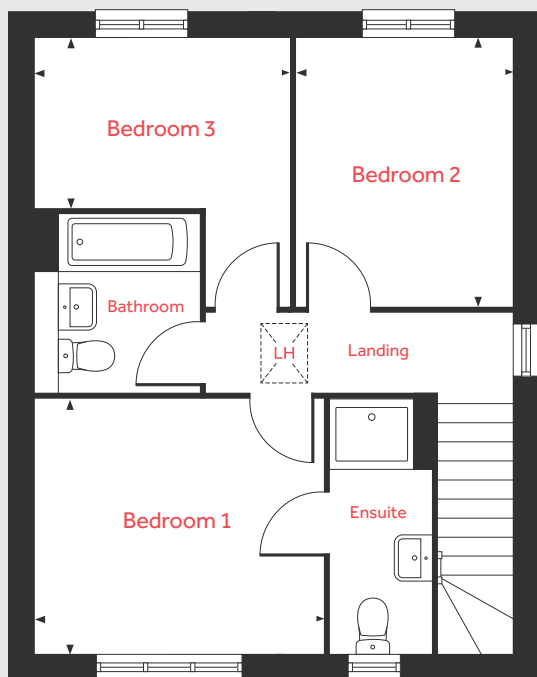
Heath Farm

Partington, Greater Manchester M31 4DH | 0161 516 3532

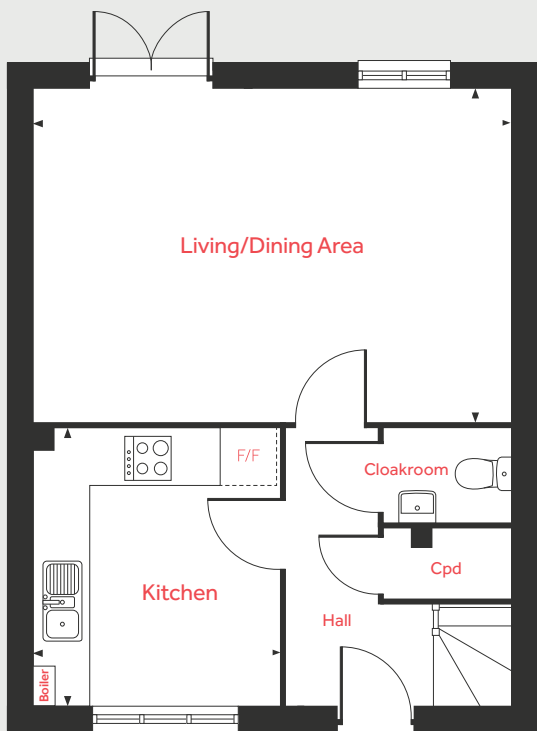
lindenhomes.co.uk/heathfarm

Linden
HOMES

First Floor



Ground Floor



The Elliot Cottage

3 bedroom home

Ground Floor

Living Room/Dining Area

5.75m x 4.00m 18'10" x 13'1"

Kitchen

3.34m x 2.99m 10'11" x 9'10"

First Floor

Bedroom 1

3.46m x 3.11m 11'4" x 10'2"

Bedroom 2

3.24m x 2.62m 10'8" x 8'7"

Bedroom 3

3.07m x 2.04m 10'1" x 6'8"

LH	Loft hatch	F/F	Space for fridge freezer
Cpd	Cupboard	◀ ▶	Measuring points

Please note, floorplans and dimensions are taken from architectural drawings and are for guidance only. Dimensions stated are within a tolerance of plus or minus 50mm. Overall dimensions are usually stated and there may be projections into these. With our continual improvement policy we constantly review our designs and specification to ensure we deliver the best product to our customers. Computer generated images not to scale. Finishes and materials may vary and landscaping is illustrative only. Kitchen layouts are indicative only and may change. To confirm specific details on our homes please ask your Sales Consultant. 1296942/November 2020.

Linden

HOMES



The Mylne Cottage

4 bedroom home

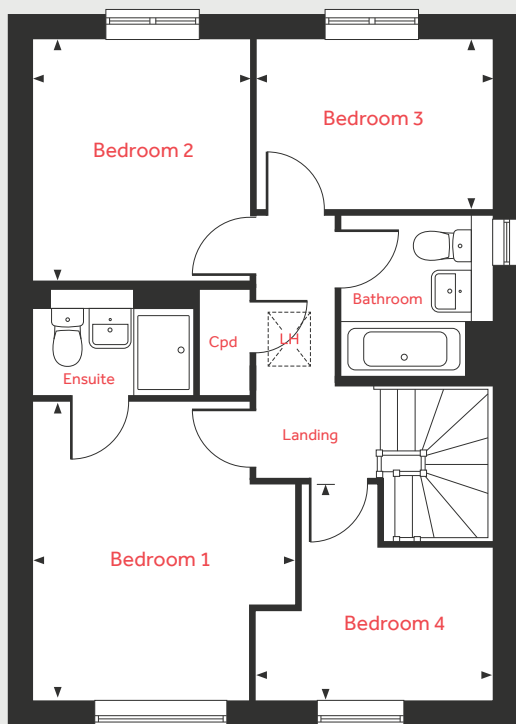
Heath Farm

Partington, Greater Manchester M31 4DH | 0161 516 3532

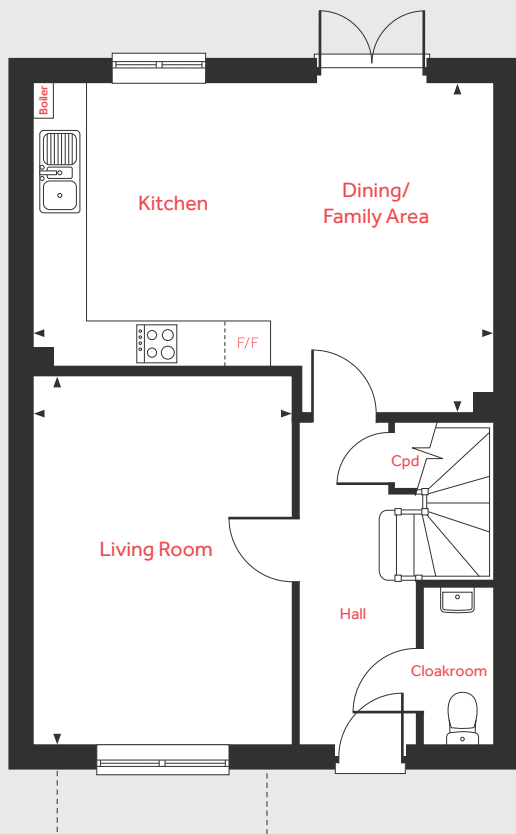
lindenhomes.co.uk/heathfarm

Linden
HOMES

First Floor



Ground Floor



The Mylne Cottage

4 bedroom home

Ground Floor

Living Room

4.84m x 3.40m 15'11" x 11'2"

Kitchen/Dining/Family Area

6.04m x 4.38m 19'10" x 14'4"

First Floor

Bedroom 1

3.98m x 3.45m 13'1" x 11'4"

Bedroom 2

3.26m x 2.89m 10'8" x 9'6"

Bedroom 3

3.14m x 2.20m 10'4" x 7'3"

Bedroom 4

3.10m x 2.91m 10'2" x 9'7"

LH	Loft hatch	F/F	Integrated fridge freezer
Cpd	Cupboard	◀ ▶	Measuring points

Please note, floorplans and dimensions are taken from architectural drawings and are for guidance only. Dimensions stated are within a tolerance of plus or minus 50mm. Overall dimensions are usually stated and there may be projections into these. With our continual improvement policy we constantly review our designs and specification to ensure we deliver the best product to our customers. Computer generated images not to scale. Finishes and materials may vary and landscaping is illustrative only. Kitchen layouts are indicative only and may change. To confirm specific details on our homes please ask your Sales Consultant. 1296942/November 2020.

Linden HOMES



The Goodridge Cottage

4 bedroom home

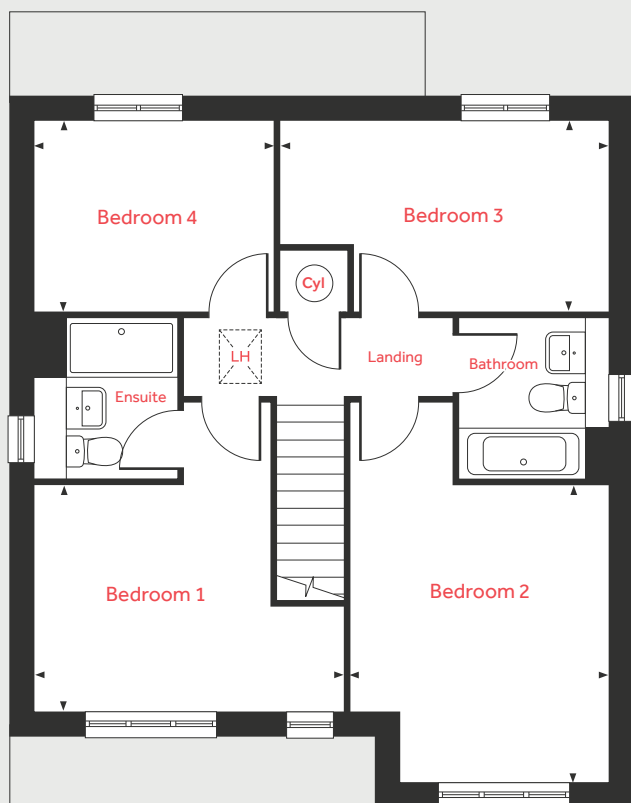
Heath Farm

Partington, Greater Manchester M31 4DH | 0161 516 3532

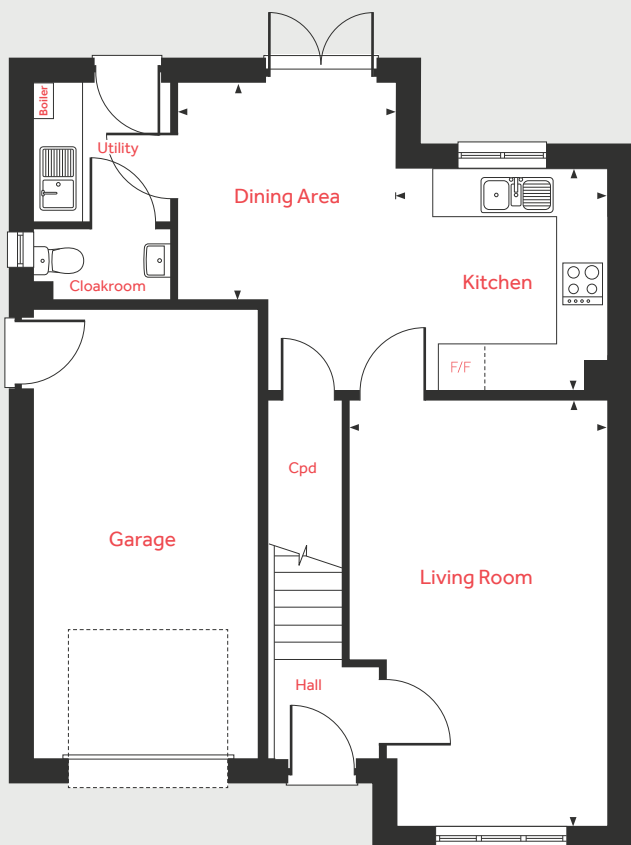
lindenhomes.co.uk/heathfarm

Linden
HOMES

First Floor



Ground Floor



The Goodridge Cottage

4 bedroom home

Ground Floor

Living Room

5.68m x 3.46m 18'8" x 11'4"

Kitchen

3.01m x 2.77m 9'11" x 9'1"

Dining Area

3.00m x 2.92m 9'10" x 9'7"

First Floor

Bedroom 1

4.14m x 3.02m 13'7" x 9'11"

Bedroom 2

3.92m x 3.46m 12'10" x 11'4"

Bedroom 3

4.40m x 2.54m 14'5" x 8'4"

Bedroom 4

3.20m x 2.54m 10'6" x 8'4"

LH	Loft hatch	F/F	Integrated fridge freezer
Cyl	Hot water cylinder	◀ ▶	Measuring points
Cpd	Cupboard		

Please note, floorplans and dimensions are taken from architectural drawings and are for guidance only. Dimensions stated are within a tolerance of plus or minus 50mm. Overall dimensions are usually stated and there may be projections into these. With our continual improvement policy we constantly review our designs and specification to ensure we deliver the best product to our customers. Computer generated images not to scale. Finishes and materials may vary and landscaping is illustrative only. Kitchen layouts are indicative only and may change. To confirm specific details on our homes please ask your Sales Consultant. 1296942/November 2020.

Linden
HOMES



The Thames Cottage

4 bedroom home

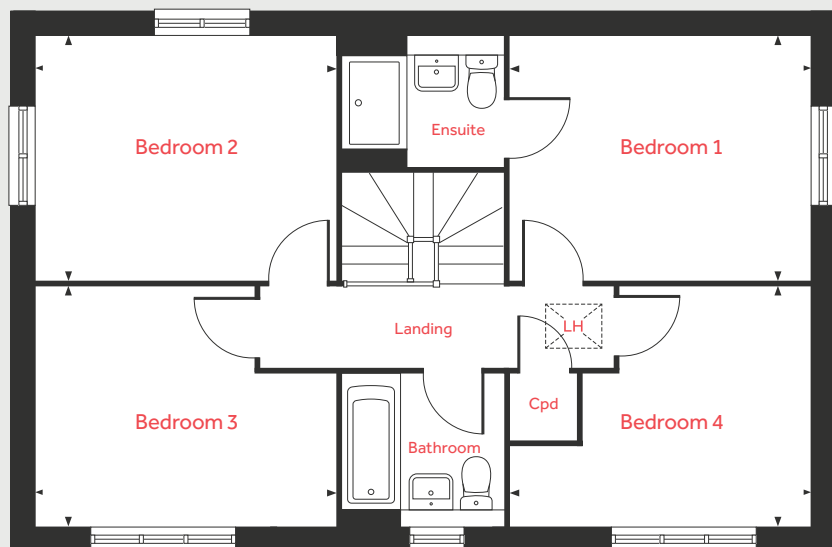
Heath Farm

Partington, Greater Manchester M31 4DH | 0161 516 3532

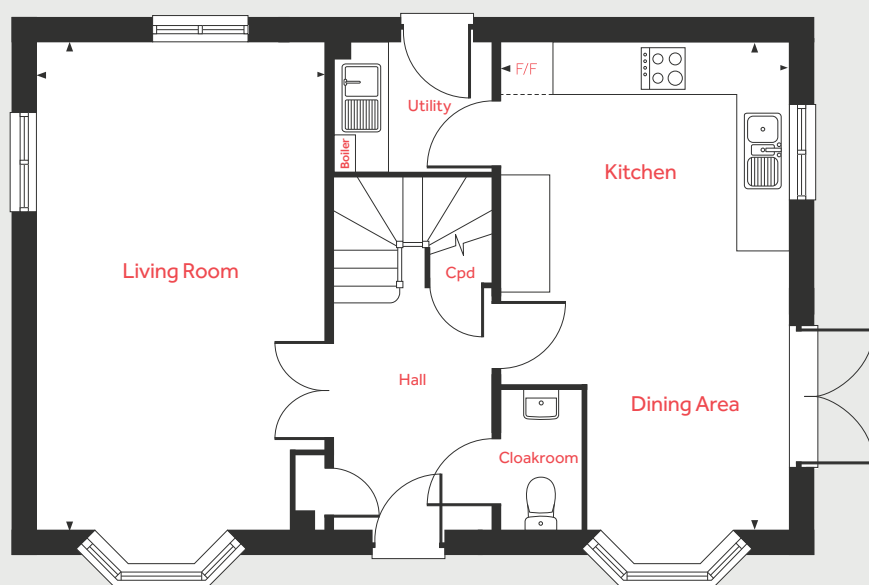
lindenhomes.co.uk/heathfarm

Linden
HOMES

First Floor



Ground Floor



The Thames Cottage

4 bedroom home

Ground Floor

Living Room

6.20m x 3.67m 20'4" x 12'0"

Kitchen/Dining Area

6.20m x 3.68m 20'4" x 12'1"

First Floor

Bedroom 1

3.72m x 3.07m 12'2" x 10'1"

Bedroom 2

3.70m x 3.07m 12'2" x 10'1"

Bedroom 3

3.72m x 3.05m 12'2" x 10'0"

Bedroom 4

3.70m x 3.05m 12'2" x 10'0"

LH	Loft hatch	F/F	Integrated fridge freezer
Cpd	Cupboard	◀ ▶	Measuring points

Please note, floorplans and dimensions are taken from architectural drawings and are for guidance only. Dimensions stated are within a tolerance of plus or minus 50mm. Overall dimensions are usually stated and there may be projections into these. With our continual improvement policy we constantly review our designs and specification to ensure we deliver the best product to our customers. Computer generated images not to scale. Finishes and materials may vary and landscaping is illustrative only. Kitchen layouts are indicative only and may change. To confirm specific details on our homes please ask your Sales Consultant. 1296942/November 2020.

Linden
HOMES



The Pembroke Cottage

4 bedroom home

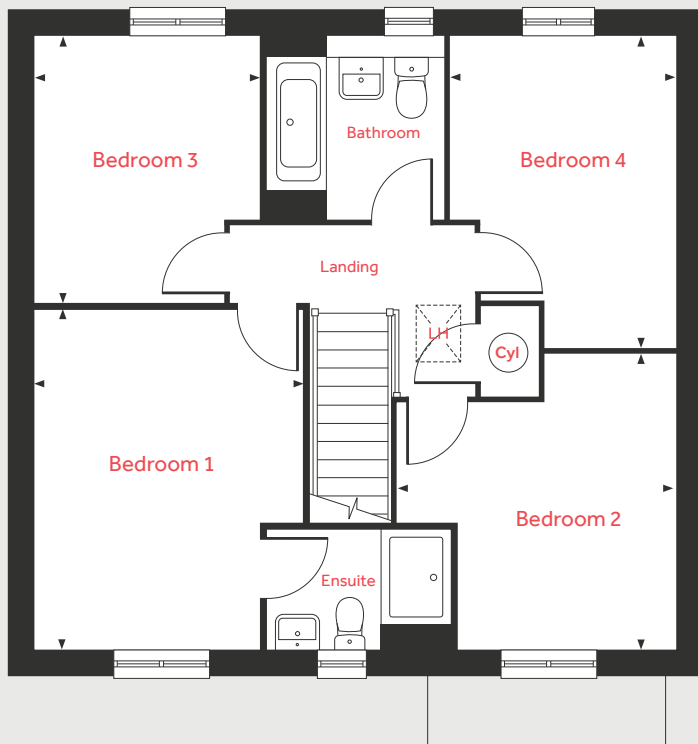
Heath Farm

Partington, Greater Manchester M31 4DH | 0161 516 3532

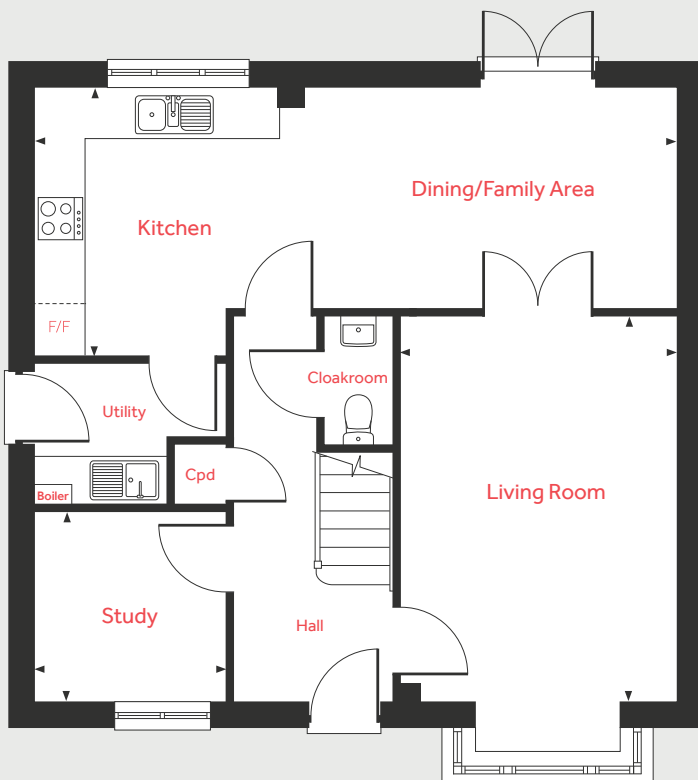
lindenhomes.co.uk/heathfarm

Linden
HOMES

First Floor



Ground Floor



The Pembroke Cottage

4 bedroom home

Ground Floor

Living Room

4.83m x 3.50m 15'10" x 11'6"

Kitchen/Dining/Family Area

8.12m x 3.35m 26'8" x 11'0"

Study

2.42m x 2.41m 7'11" x 7'11"

First Floor

Bedroom 1

4.34m x 3.41m 14'3" x 11'2"

Bedroom 2

3.73m x 3.50m 12'3" x 11'6"

Bedroom 3

3.40m x 2.92m 11'2" x 9'7"

Bedroom 4

3.97m x 2.86m 13'0" x 9'5"

LH	Loft hatch	F/F	Integrated fridge freezer
Cyl	Hot water cylinder	◀ ▶	Measuring points
Cpd	Cupboard		

Please note, floorplans and dimensions are taken from architectural drawings and are for guidance only. Dimensions stated are within a tolerance of plus or minus 50mm. Overall dimensions are usually stated and there may be projections into these. With our continual improvement policy we constantly review our designs and specification to ensure we deliver the best product to our customers. Computer generated images not to scale. Finishes and materials may vary and landscaping is illustrative only. Kitchen layouts are indicative only and may change. To confirm specific details on our homes please ask your Sales Consultant. 1296942/November 2020.

Linden
HOMES



Specification

We give you so much more

Heath Farm

Partington, Greater Manchester M31 4DH | 0161 516 3532

lindenhomes.co.uk/heathfarm

Linden
HOMES

Specification

We give you so much more

Each home will be independently surveyed during construction by the NHBC, who will issue their 10 year warranty certificate on completion of the home.

	2 bedroom homes	3 bedroom homes	4 bedroom homes
Kitchens			
A choice of contemporary wall and base units from Symphony Kitchens	■	■	■
A choice of 40mm laminate worktops with matching upstand	■	■	■
Stainless steel single electric fan oven, stainless steel gas hob and splashback	■	■	
Stainless steel double electric fan oven, stainless steel gas hob and splashback			■
Integrated hood	■	■	■
Stainless steel chimney hood		■*	■
Soft close doors and drawers	■	■	■
Bathrooms			
A contemporary white bathroom suite by Ideal Standard	■	■	■
Tiling range by Porcelanosa	■	■	■
Tiling provided (please ask a Sales Consultant)	■	■	■
Bath/shower mixer	■	■	■
Lighting and Electrical			
TV point to living room	■	■	■
BT points to living room and bedroom 1	■	■	■
Power and lights to garages	■	■	■
Heating			
Energy efficient gas boiler central heating and hot water	■	■	■
White radiators	■	■	■
External Features			
External light	■	■	■
Wall or fencing provided to all boundaries (ask Sales Consultant for plot details)	■	■	■
Peace of Mind			
Multi point locking system to front doors and rear/side doors	■	■	■
Lockable double glazed windows (except for escape windows)	■	■	■
Mains wired smoke detectors, heat detectors and CO detectors	■	■	■

*3 bedroom detached homes only.

The specifications of all our homes is correct at the date of going to print but may be subject to change as necessary and without notice. Please ask your Sales Consultant for more information. 1296942/November 2020.

Linden
HOMES