



Around the local neighbourhood

- | | | |
|---|---|--|
| 1 Tesco Superstore
GL52 8LR | 5 Cleeve Sports Centre
GL52 8AE | 9 Cleeve Hill
GL52 3PR |
| 2 Tithe Barn
GL52 8NN | 6 Bishops Cleeve Football Club
GL52 3PD | 10 Sandford Park Lido
GL53 7PU |
| 3 Bishops Cleeve Primary Academy
GL52 8NN | 7 Cheltenham Racecourse
GL50 4SH | 11 Sudeley Castle
GL54 5LP |
| 4 Pittville Park & Pump Room
GL52 3JE | 8 Cleeve School and Sixth
Form Centre
GL52 8AE | 12 Co-op and Homelands
Commercial Centre
GL52 8EN |

Woodland View Bishops Cleeve

This impressive new development of 2, 3 and 4 bedroom homes is in the Gloucestershire village of Bishops Cleeve; nestling at the foot of Cleeve Hill, the highest point of the beautiful Cotswolds, an Area of Outstanding Natural Beauty.

Woodland View enjoys views of Cleeve Hill with its miles of stunning countryside ready to be explored, on your doorstep. Just 5 minutes walk away there is the convenience of a Co-op store, several takeaways and a coffee shop. The bustling village centre of Bishops Cleeve is also less than 1 mile away with its bakery, cafes, independent shops, supermarkets and post office. There are also pubs, takeaways, schools, health and

sports facilities. The stunning Cotswold countryside and pretty villages are easy to reach and it's only 5 miles to the Regency Spa town of Cheltenham known for its restaurants, theatres, festivals and shopping set amid beautiful parks and tree-lined streets.

So, if you're looking for a quality new home close to the Cotswolds, your search ends here!

Woodland View

Bishops Cleeve

Development layout



4 bedroom home

- The Knightley
- The Pembroke
- The Leverton
- The Mylne
- The Aslin

3 bedroom home

- The Mountford
- The Eveleigh
- The Emmett

2 bedroom home

- The Harcourt

- Affordable housing

v visitor space

Note: Hedgehog Highways to fences. Please see sales consultant for further details.

Not to scale. Trees and landscaping are indicative only and may alter during construction. The trees, shrubs and gardens shown are illustrative only. Finishes and materials may vary from those shown here. Please see our sales consultant for further details.



Specification

We give you so much more

The specification shown in this leaflet is correct at the time of going to press. Linden Homes is continually reviewing and updating the specification on all housetypes and therefore reserves the right to change specification details. Photographs depict a typical Linden Homes interior and may include optional upgrades. For full details regarding current specification and finishes, for the plots you are interested in, please refer to our sales consultant.

When you have finished with this leaflet please recycle it.

Bovis Homes Limited, Cotswolds region
Cleeve Hall, Cheltenham Road, Bishops Cleeve, Cheltenham, Gloucestershire GL52 8GD. T: 01242 388 502

Produced by the Vistry Group Design Studio. WBISH GD60266 / 12.21

lindenhomes.co.uk

Linden
HOMES

Woodland View

Woodland View, Bishops Cleeve, GL52 8HZ | **01242 312702**

lindenhomes.co.uk

Linden
HOMES

Woodland View

Bishops Cleeve

We give you so much more

Each home will be independently surveyed during construction by NHBC, who will issue their 10 year warranty certificate on completion of the home.

		2 bedroom The Harcourt			3 bedroom The Emmett The Eveleigh The Mountford			4 bedroom The Aslin The Mylne The Leverton The Pembroke The Knightley							
Kitchen															
Symphony Konzept range kitchen with laminate worktop	■	■	■	■	■	■	■	■	■	■	■	■			
Stainless steel sink and drainer (single bowl) with chrome mixer tap	■	■	■	■											
Stainless steel sink and drainer (single and a half bowl) with chrome mixer tap									■	■	■	■			
Stainless steel sink and drainer (single bowl) with chrome mixer tap in utility				■							■	■			
Indesit hob (60cm) with Indesit built-in single under oven, with stainless steel splashback and integrated silver hood	■	■	■	■											
Indesit hob (60 cm) with Indesit built-in double under oven, with stainless steel splashback and integrated silver hood.								■	■						
Indesit hob (60 cm) with Indesit built-in double under oven, with stainless steel splashback and 60cm stainless steel chimney hood										■	■	■			
Track light fitting	■	■	■	■	■	■	■	■	■	■	■	■			
Fridge/freezer space	■	■	■	■											
Integrated (Indesit) 70/30 fridge-freezer								■	■	■	■	■			
Space for integrated dishwasher with plumbing and electrics	■	■	■	■				■	■	■	■	■			
Space for washing machine with plumbing and electrics in utility				■						■	■	■			
Space for washing machine with plumbing and electrics in kitchen	■	■	■					■	■						
Bathrooms and en suite(s)															
Ideal Standard contemporary white Tempo Arc sanitary ware suite	■	■	■	■	■	■	■	■	■	■	■	■			
Ideal Standard close coupled WC to cloakroom	■	■	■	■				■	■	■	■	■			
Ideal Standard low profile shower tray with glass enclosure in en suite		■	■	■				■	■	■	■	■			
Handheld hair wash attachment in bathroom		■	■	■				■	■	■	■	■			
Shower over the bath	■														
Choice of standard Porcelanosa wall tiling (splashback, half-height over bath, and full-height to shower cubicle)*	■	■	■	■				■	■	■	■	■			
White batten light holder	■	■	■	■				■	■	■	■	■			
Radiator in bathroom / en suite	■	■	■	■				■	■	■	■	■			
Bedrooms															
Dressing area to bedroom 1												■			



		2 bedroom The Harcourt			3 bedroom The Emmett The Eveleigh The Mountford			4 bedroom The Aslin The Mylne The Leverton The Pembroke The Knightley						
Doors and Windows														
Front door with multi-point security locking system and security chain	■	■	■	■	■	■	■	■	■	■	■	■		
Front door number - chrome plated door numeral	■	■	■	■	■	■	■	■	■	■	■	■		
PVCu double glazing to windows	■	■	■	■	■	■	■	■	■	■	■	■		
Double glazed PVCu French doors	■	■	■	■	■	■	■	■	■	■	■	■		
Ladder style internal doors with brass satin finish handles	■	■	■	■	■	■	■	■	■	■	■	■		
Paving outside French / bi-fold door and path to garage personnel door (where applicable)	■	■	■	■	■	■	■	■	■	■	■	■		
General														
White painted walls and smooth white ceilings	■	■	■	■	■	■	■	■	■	■	■	■		
Multi-media point in living room	■	■	■	■	■	■	■	■	■	■	■	■		
TV point to lounge and family room (where applicable)	■	■	■	■	■	■	■	■	■	■	■	■		
Master telephone socket (plus to study where shown)	■	■	■	■	■	■	■	■	■	■	■	■		
Ideal combi-boiler with honeywell heating control and room thermostat(s)	■	■	■	■	■	■	■	■	■	■	■	■		
Thermostatic valves to all radiators (with the exception of rooms with separate thermostat control)	■	■	■	■	■	■	■	■	■	■	■	■		
Contemporary lantern to front door and wiring only to the rear door	■	■	■	■	■	■	■	■	■	■	■	■		
Mains operated doorbell (push), satin chrome finish	■	■	■	■	■	■	■	■	■	■	■	■		
Mains wired smoke detectors with battery back-up	■	■	■	■	■	■	■	■	■	■	■	■		
Battery powered carbon monoxide detector (wall mounted) to be provided for each floor	■	■	■	■	■	■	■	■	■	■	■	■		
Power and lighting to garage (where in curtilage of the plot)	■	■	■	■	■	■	■	■	■	■	■	■		
Outside tap	■	■	■	■	■	■	■	■	■	■	■	■		
Enclosed fenced rear garden, and garden gate (where applicable)	■	■	■	■	■	■	■	■	■	■	■	■		
NHBC Buildmark cover	■	■	■	■	■	■	■	■	■	■	■	■		
First two years' customer service support from Linden Homes	■	■	■	■	■	■	■	■	■	■	■	■		

■ Fitted as standard - included in the property
* Subject to stage of construction



The Harcourt

2 bedroom home

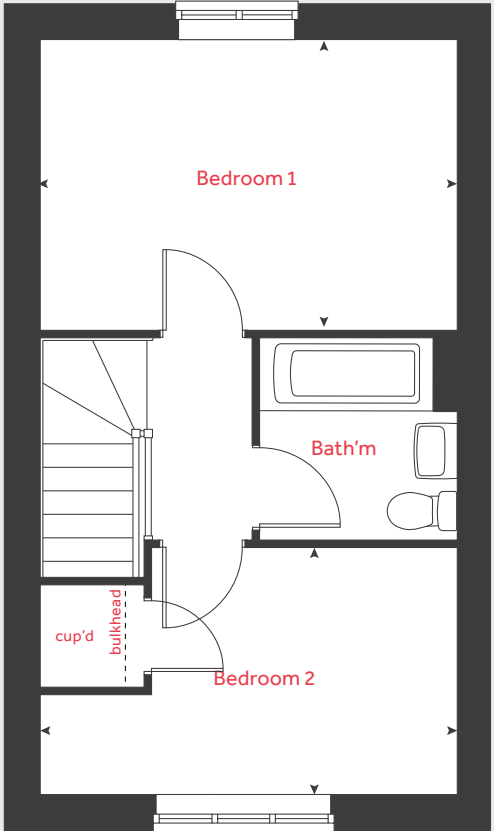
Woodland View

Bishops Cleeve, GL52 8HZ | 01242 312702

lindenhomes.co.uk

Linden
HOMES

First floor



The Harcourt

2 bedroom home

Homes 6, 7, 10 & 11

Ground floor

Kitchen / dining area

4.56m x 2.01m 15' 0" x 6' 7"

Living room

4.08m x 2.75m 13' 5" x 9' 1"

First floor

Bedroom 1

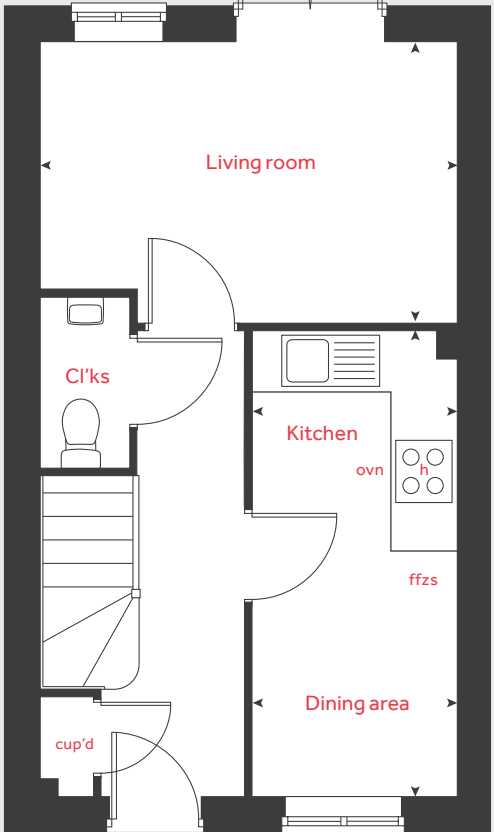
4.08m x 2.84m 13' 5" x 9' 4"

Bedroom 2

4.08m x 2.41m 13' 5" x 7' 11"

h	hob	cup'd	cupboard
ovn	oven	◀ ▶	measuring points
ffzs	fridge freezer space		

Ground floor



Please note, floorplans and dimensions are taken from architectural drawings and are for guidance only. Dimensions stated are within a tolerance of plus or minus 50mm. Overall dimensions are usually stated and there may be projections into these. With our continual improvement policy we constantly review our designs and specification to ensure we deliver the best products to our customers. Computer generated images not to scale. Finishes and materials may vary and landscaping is illustrative only. Kitchen layouts are indicative only and may change. To confirm specific details on our homes please see our sales consultant.

Produced by Vistry Group Design Studio.

When you have finished with this leaflet please recycle it.

WBISH GD60266 / 12.21

Linden
HOMES



The Emmett

3 bedroom home

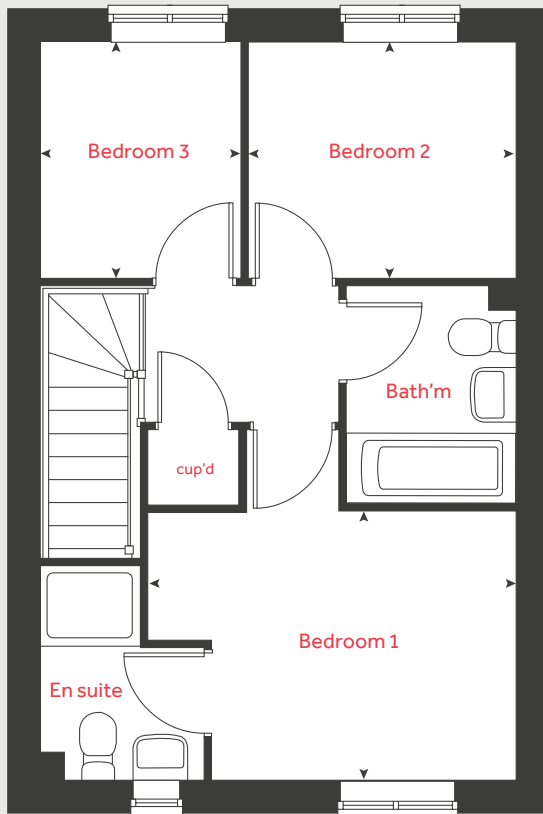
Woodland View

Bishops Cleeve, GL52 8HZ | 01242 312702

lindenhomes.co.uk

Linden
HOMES

First floor



The Emmett

3 bedroom home

Homes 3, 4, 20, 21, 40, 41, 62 & 63

Ground floor

Kitchen / dining room

4.75m x 2.96m 15' 5" x 9' 9"

Living room

4.35m x 3.78m 14' 4" x 12' 5"

First floor

Bedroom 1

3.04m x 2.69m 10' 0" x 8' 10"

Bedroom 2

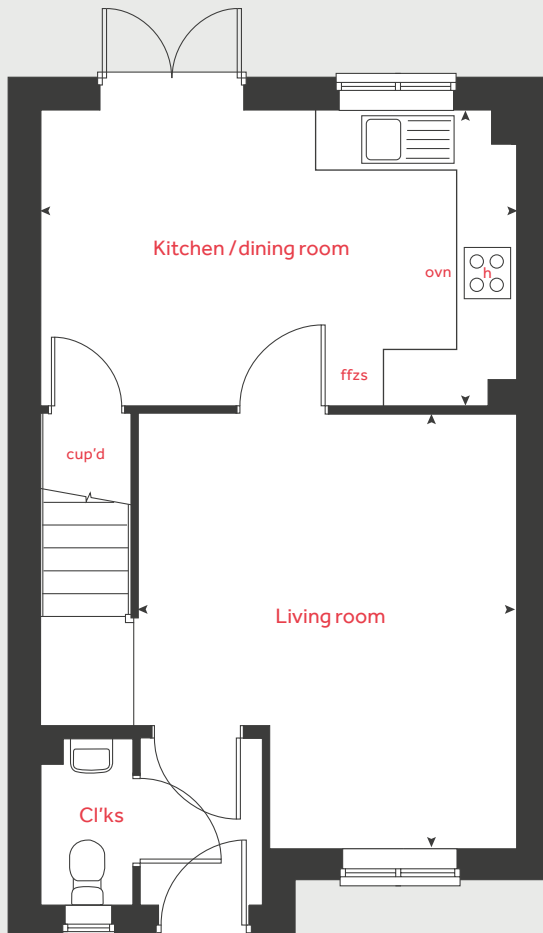
2.68m x 2.37m 8' 10" x 7' 9"

Bedroom 3

2.37m x 2.00m 7' 9" x 6' 7"

h	hob	cup'd	cupboard
ovn	oven	◀ ▶	measuring points
ffzs	fridge freezer space		

Ground floor



Please note, floorplans and dimensions are taken from architectural drawings and are for guidance only. Dimensions stated are within a tolerance of plus or minus 50mm. Overall dimensions are usually stated and there may be projections into these. With our continual improvement policy we constantly review our designs and specification to ensure we deliver the best products to our customers. Computer generated images not to scale. Finishes and materials may vary and landscaping is illustrative only. Kitchen layouts are indicative only and may change. To confirm specific details on our homes please see our sales consultant.

Produced by Vistry Group Design Studio.

When you have finished with this leaflet please recycle it.

WBISH GD60266 / 12.21

Linden

HOMES



The Eveleigh

3 bedroom home

Woodland View

Bishops Cleeve, GL52 8HZ | 01242 312702

lindenhomes.co.uk

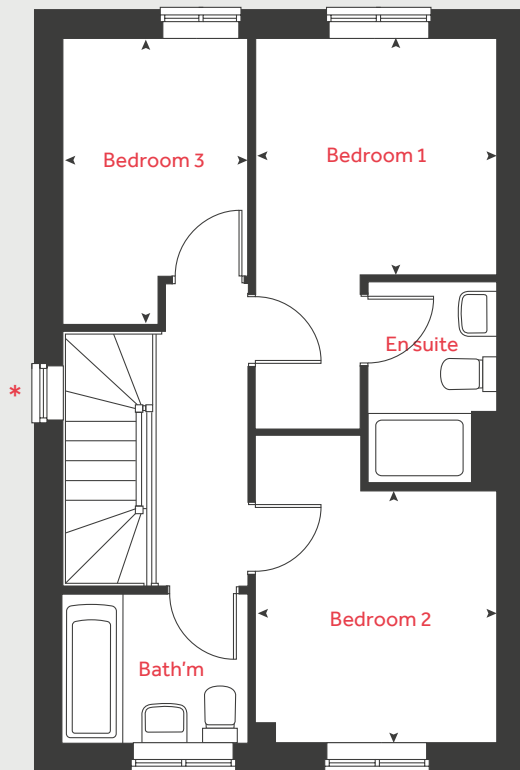
Linden
HOMES

The Eveleigh

3 bedroom home

Homes 5, 8, 9, 12, 22, 27, 42, 43, 61, 64 & 65

First floor



Ground floor

Kitchen / dining area

4.82m x 2.84m 15' 9" x 9' 4"

Living room

5.03m x 3.23m 16' 6" x 10' 7"

First floor

Bedroom 1

2.81m x 2.75m 9' 3" x 9' 0"

Bedroom 2

2.92m x 2.81m 9' 7" x 9' 3"

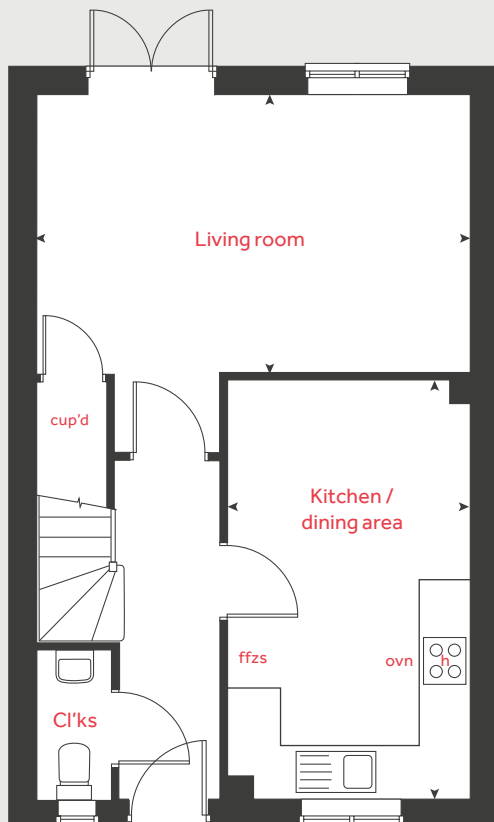
Bedroom 3

3.23m x 2.16m 10' 7" x 7' 1"

h	hob	cup'd	cupboard
ovn	oven	◀ ▶	measuring points
ffzs	fridge freezer space		

* Window applies to selected plots only. Please see sales consultant for further details.

Ground floor



Please note, floorplans and dimensions are taken from architectural drawings and are for guidance only. Dimensions stated are within a tolerance of plus or minus 50mm. Overall dimensions are usually stated and there may be projections into these. With our continual improvement policy we constantly review our designs and specification to ensure we deliver the best products to our customers. Computer generated images not to scale. Finishes and materials may vary and landscaping is illustrative only. Kitchen layouts are indicative only and may change. To confirm specific details on our homes please see our sales consultant.

Produced by Vistry Group Design Studio.

When you have finished with this leaflet please recycle it.

WBISH GD60266 / 12.21

Linden
HOMES



The Mountford

3 bedroom home

Woodland View

Bishops Cleeve, GL52 8HZ | 01242 312702

lindenhomes.co.uk

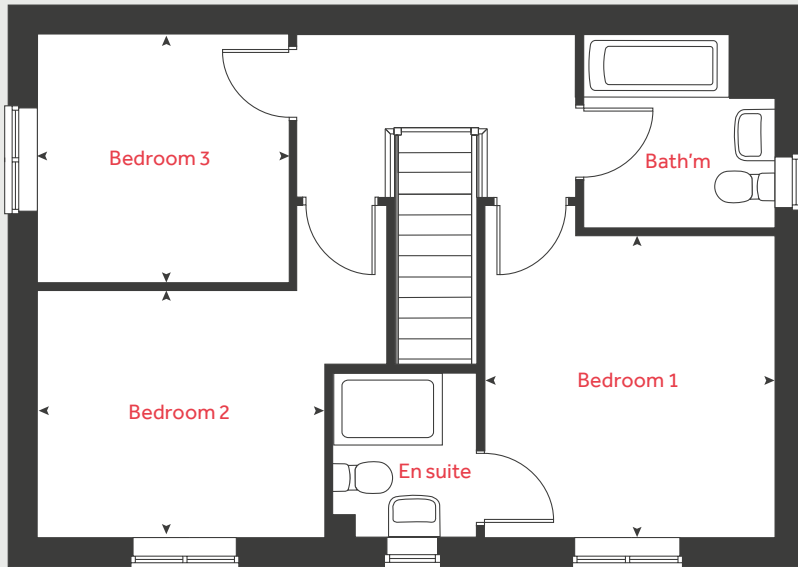
Linden
HOMES

The Mountford

3 bedroom home

Homes 2, 23, 28 & 48

First floor



Ground floor

Kitchen / dining area

5.58m x 2.70m 18' 4" x 8' 10"

Living room

5.59m x 3.25m 18' 4" x 10' 8"

First floor

Bedroom 1

3.35m x 3.31m 11' 0" x 10' 11"

Bedroom 2

3.13m x 2.74m 10' 3" x 9' 0"

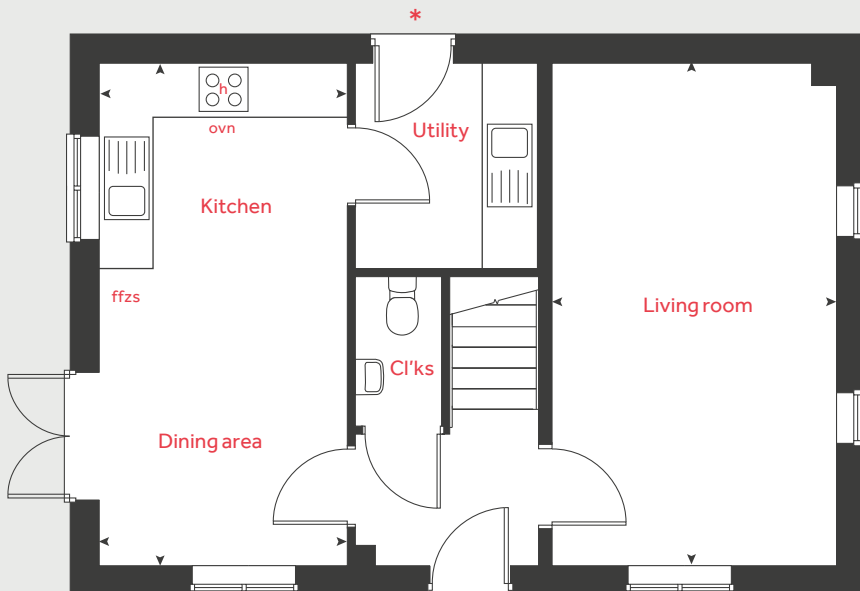
Bedroom 3

2.76m x 2.76m 9' 1" x 9' 1"

h	hob	cup'd	cupboard
ovn	oven	◀ ▶	measuring points
ffzs	fridge freezer space		

* Door to utility applies to selected plots only. Please see sales consultant for further details.

Ground floor



Please note, floorplans and dimensions are taken from architectural drawings and are for guidance only. Dimensions stated are within a tolerance of plus or minus 50mm. Overall dimensions are usually stated and there may be projections into these. With our continual improvement policy we constantly review our designs and specification to ensure we deliver the best products to our customers. Computer generated images not to scale. Finishes and materials may vary and landscaping is illustrative only. Kitchen layouts are indicative only and may change. To confirm specific details on our homes please see our sales consultant.

Produced by Vistry Group Design Studio.

When you have finished with this leaflet please recycle it.

WBISH GD60266 / 12.21

Linden
HOMES



The Aslin

4 bedroom home

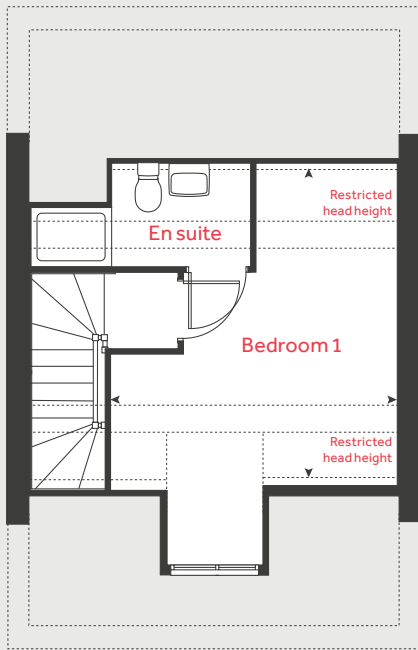
Woodland View

Bishops Cleeve, GL52 8HZ | 01242 312702

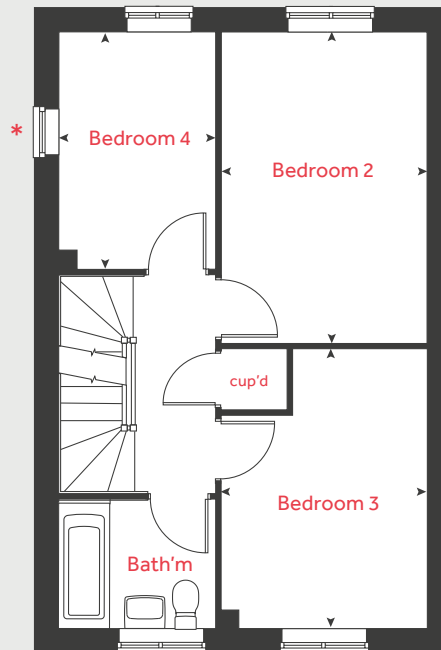
lindenhomes.co.uk

Linden
HOMES

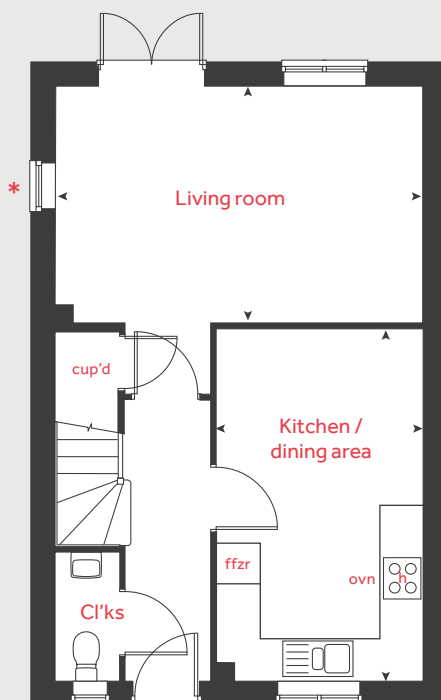
Second floor



First floor



Ground floor



The Aslin

4 bedroom home

Homes 44, 45 & 60

Ground floor

Kitchen / dining area
4.87m x 2.80m 15' 8" x 9' 2"

Living room
4.98m x 3.21m 16' 4" x 10' 6"

First floor

Bedroom 2
4.20m x 2.78m 13' 10" x 9' 2"

Bedroom 3
3.78m x 2.78m 12' 5" x 9' 2"

Bedroom 4
3.20m x 2.12m 10' 6" x 7' 0"

Second floor

Bedroom 1
4.29m x 3.89m 14' 1" x 12' 9"

h hob cup'd cupboard
ovn oven measuring points
ffzr fridge freezer

* Windows apply to selected plots only. Please see sales consultant for further details.

Please note, floorplans and dimensions are taken from architectural drawings and are for guidance only. Dimensions stated are within a tolerance of plus or minus 50mm. Overall dimensions are usually stated and there may be projections into these. With our continual improvement policy we constantly review our designs and specification to ensure we deliver the best products to our customers. Computer generated images not to scale. Finishes and materials may vary and landscaping is illustrative only. Kitchen layouts are indicative only and may change. To confirm specific details on our homes please see our sales consultant.

Produced by Vistry Group Design Studio.

When you have finished with this leaflet please recycle it.

WBISH GD60266 / 12.21

Linden
HOMES



The Mylne

4 bedroom home

Woodland View

Bishops Cleeve, GL52 8HZ | 01242 312702

lindenhomes.co.uk

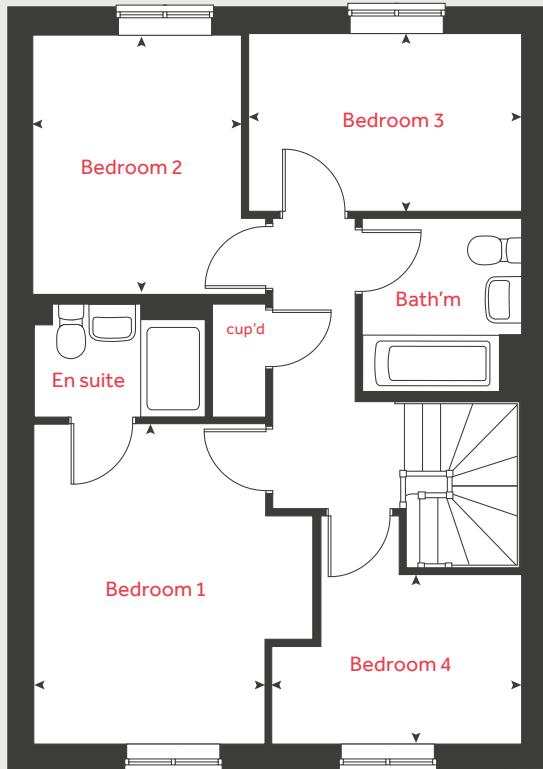
Linden
HOMES

The Mylne

4 bedroom home

Homes 47, 55 & 58

First floor



Ground floor

Kitchen / dining / family area

5.17m x 3.14m 17' 0" x 10' 4"

Living room

4.83m x 3.39m 15' 10" x 11' 2"

First floor

Bedroom 1

3.93m x 2.86m 12' 11" x 9' 5"

Bedroom 2

3.20m x 2.56m 10' 6" x 8' 5"

Bedroom 3

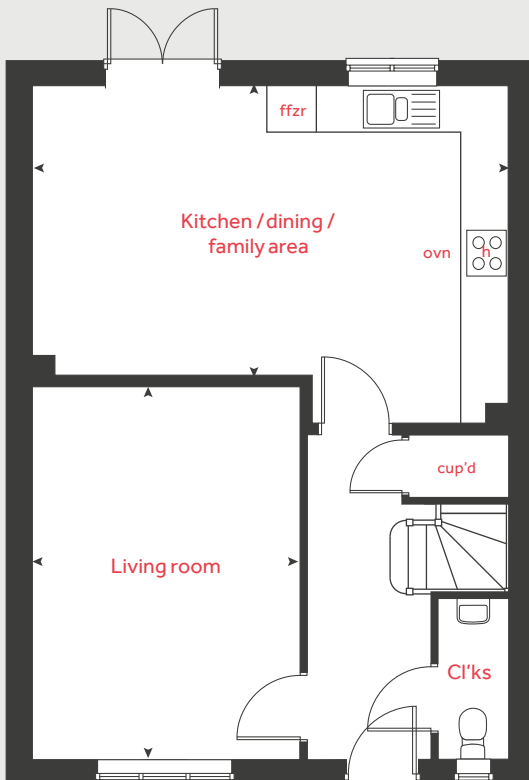
3.38m x 2.18m 11' 1" x 7' 2"

Bedroom 4

3.09m x 2.08m 10' 2" x 6' 10"

h	hob	cup'd	cupboard
ovn	oven	◀ ▶	measuring points
ffzr	fridge freezer		

Ground floor



Please note, floorplans and dimensions are taken from architectural drawings and are for guidance only. Dimensions stated are within a tolerance of plus or minus 50mm. Overall dimensions are usually stated and there may be projections into these. With our continual improvement policy we constantly review our designs and specification to ensure we deliver the best products to our customers. Computer generated images not to scale. Finishes and materials may vary and landscaping is illustrative only. Kitchen layouts are indicative only and may change. To confirm specific details on our homes please see our sales consultant.

Produced by Vistry Group Design Studio.

When you have finished with this leaflet please recycle it.

WBISH GD60266 / 12.21

Linden
HOMES



The Leverton

4 bedroom home

Woodland View

Bishops Cleeve, GL52 8HZ | 01242 312702

lindenhomes.co.uk

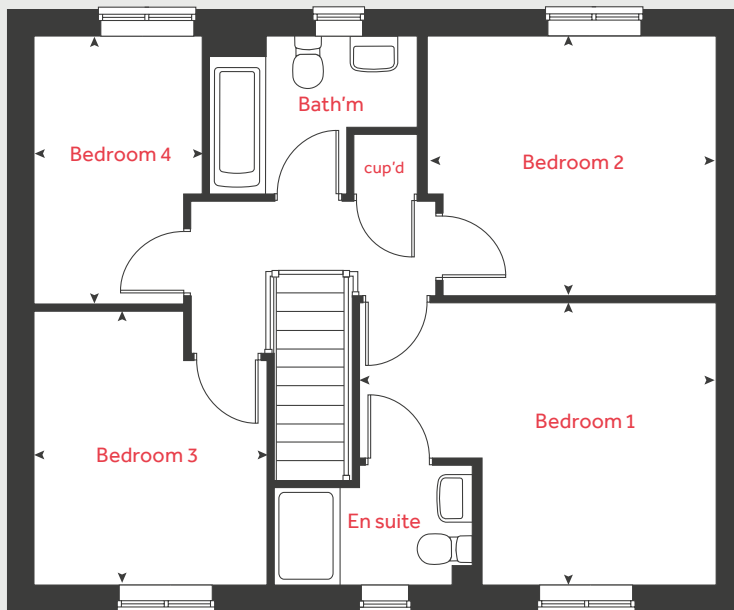
Linden
HOMES

The Leverton

4 bedroom home

Home 56

First floor



Ground floor

Kitchen	2.98m x 2.71m	9' 9" x 8' 11"
Dining area	4.04m x 2.80m	13' 2" x 9' 3"
Living room	4.85m x 3.39m	15' 11" x 11' 2"
Study	3.39m x 1.82m	11' 2" x 6' 0"

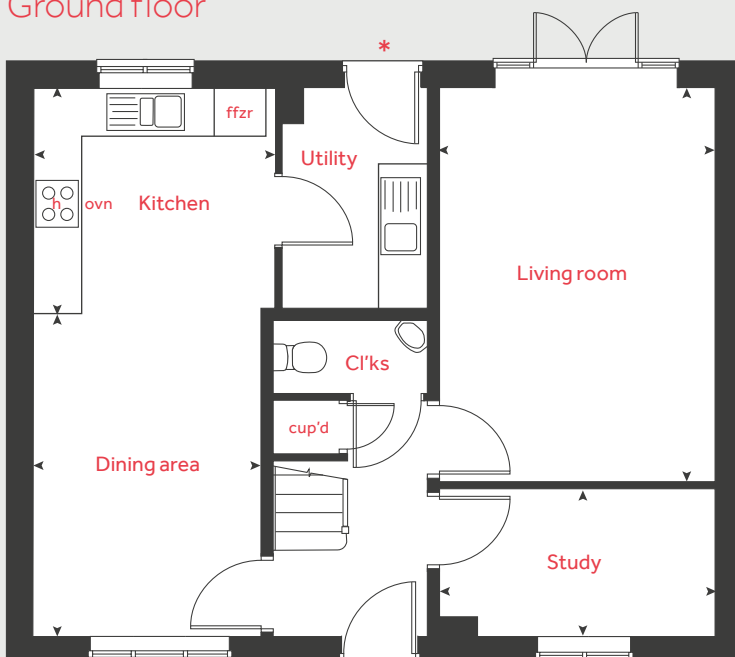
First floor

Bedroom 1	3.47m x 2.88m	11' 5" x 9' 6"
Bedroom 2	3.55m x 3.19m	11' 8" x 10' 6"
Bedroom 3	3.37m x 2.87m	11' 1" x 9' 5"
Bedroom 4	3.30m x 2.07m	10' 10" x 6' 10"

h	hob	cup'd	cupboard
ovn	oven	◀ ▶	measuring points
ffzr	fridge freezer		

* Utility door applies to selected plots only. Please see sales consultant for further details.

Ground floor



Please note, floorplans and dimensions are taken from architectural drawings and are for guidance only. Dimensions stated are within a tolerance of plus or minus 50mm. Overall dimensions are usually stated and there may be projections into these. With our continual improvement policy we constantly review our designs and specification to ensure we deliver the best products to our customers. Computer generated images not to scale. Finishes and materials may vary and landscaping is illustrative only. Kitchen layouts are indicative only and may change. To confirm specific details on our homes please see our sales consultant.

Produced by Vistry Group Design Studio.

When you have finished with this leaflet please recycle it.

WBISH GD60266 / 12.21

Linden
HOMES



The Pembroke

4 bedroom home

Woodland View

Bishops Cleeve, GL52 8HZ | 01242 312702

lindenhomes.co.uk

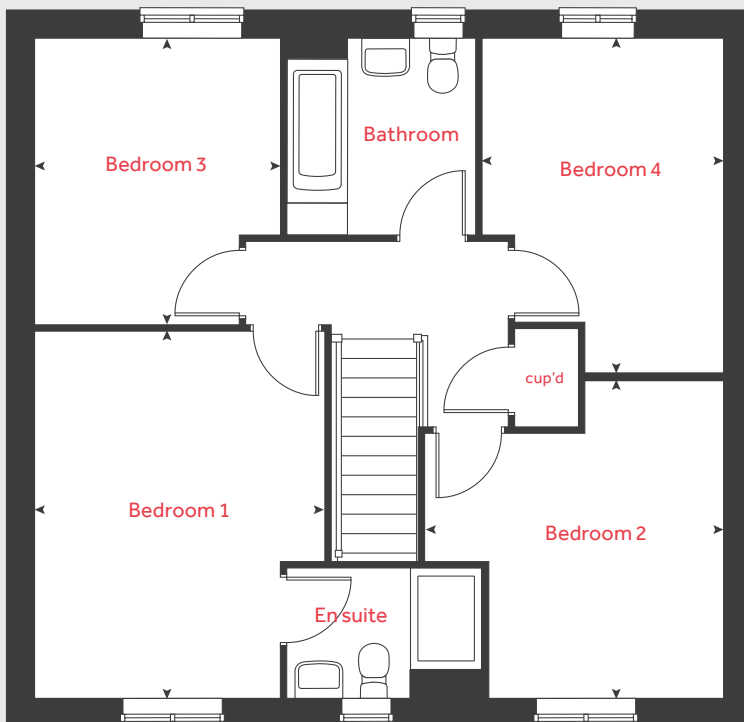
Linden
HOMES

The Pembroke

4 bedroom home

Homes 1, 57 & 59

First floor



Ground floor

Kitchen

3.40m x 3.28m 11' 2" x 10' 9"

Living room

4.88m x 3.52m 16' 0" x 11' 7"

Family / dining area

5.32m x 2.80m 17' 5" x 9' 2"

Study

2.44m x 2.40m 8' 0" x 7' 10"

First floor

Bedroom 1

4.32m x 3.43m 14' 2" x 11' 3"

Bedroom 2

3.76m x 3.52m 12' 4" x 11' 7"

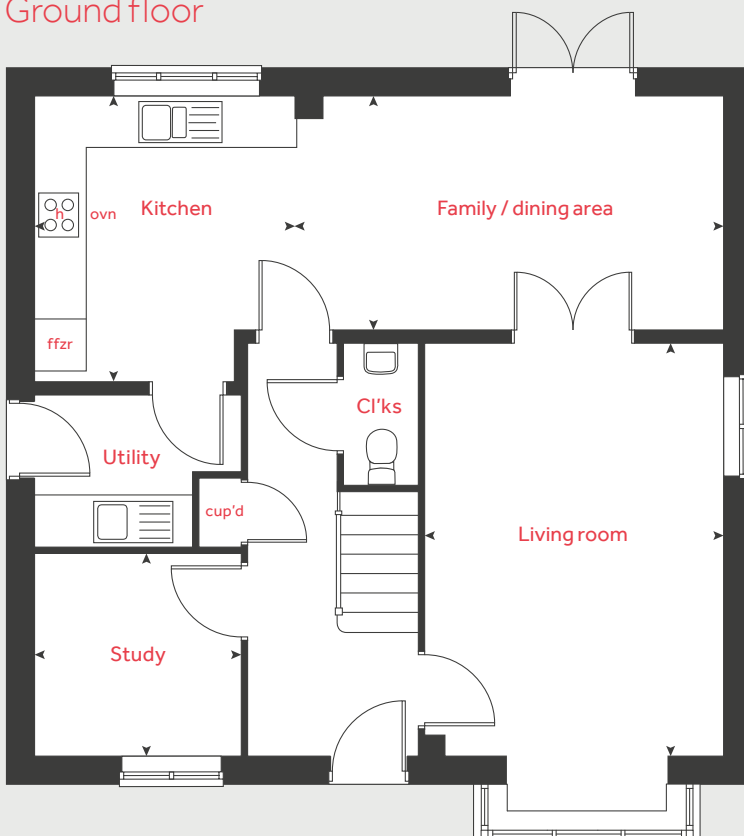
Bedroom 3

3.40m x 2.90m 11' 2" x 9' 6"

Bedroom 4

3.96m x 2.85m 13' 0" x 9' 4"

Ground floor



h	hob	cup'd	cupboard
ovn	oven	◀ ▶	measuring points
ffzr	fridge freezer		

* Window applies to selected plots only. Please see sales consultant for further details.

Please note, floorplans and dimensions are taken from architectural drawings and are for guidance only. Dimensions stated are within a tolerance of plus or minus 50mm. Overall dimensions are usually stated and there may be projections into these. With our continual improvement policy we constantly review our designs and specification to ensure we deliver the best products to our customers. Computer generated images not to scale. Finishes and materials may vary and landscaping is illustrative only. Kitchen layouts are indicative only and may change. To confirm specific details on our homes please see our sales consultant.

Produced by Vistry Group Design Studio.

When you have finished with this leaflet please recycle it.

WBISH GD60266 / 12.21

Linden
HOMES



The Knightley

4 bedroom home

Woodland View

Bishops Cleeve, GL52 8HZ | 01242 312702

lindenhomes.co.uk

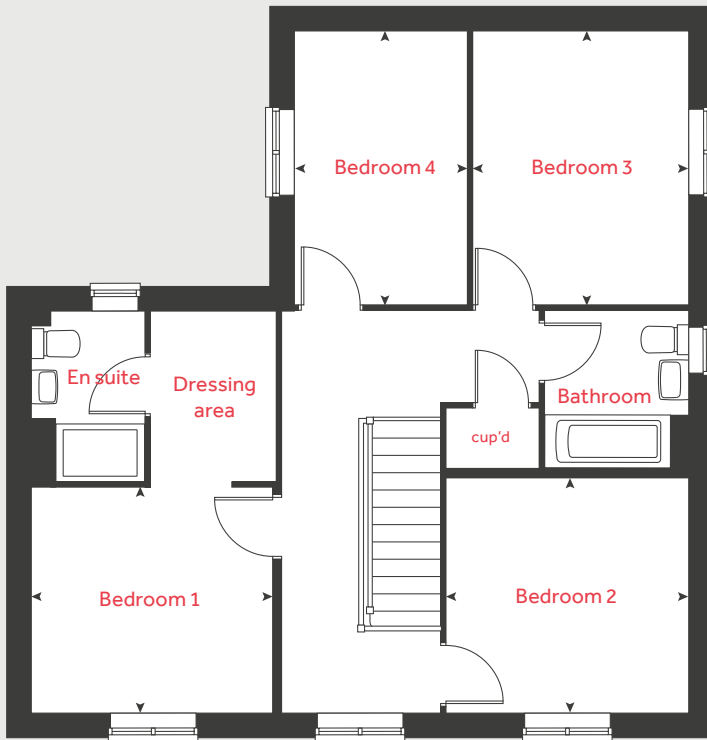
Linden
HOMES

The Knightley

4 bedroom home

Homes 46 & 49

First floor



Ground floor

Kitchen / dining area

5.30m x 3.23m 17' 5" x 10' 7"

Living room

5.42m x 3.23m 17' 9" x 10' 7"

Family room

3.99m x 3.25m 12' 11" x 10' 7"

First floor

Bedroom 1

3.25m x 3.02m 10' 8" x 9' 10"

Bedroom 2

3.25m x 3.18m 10' 8" x 10' 5"

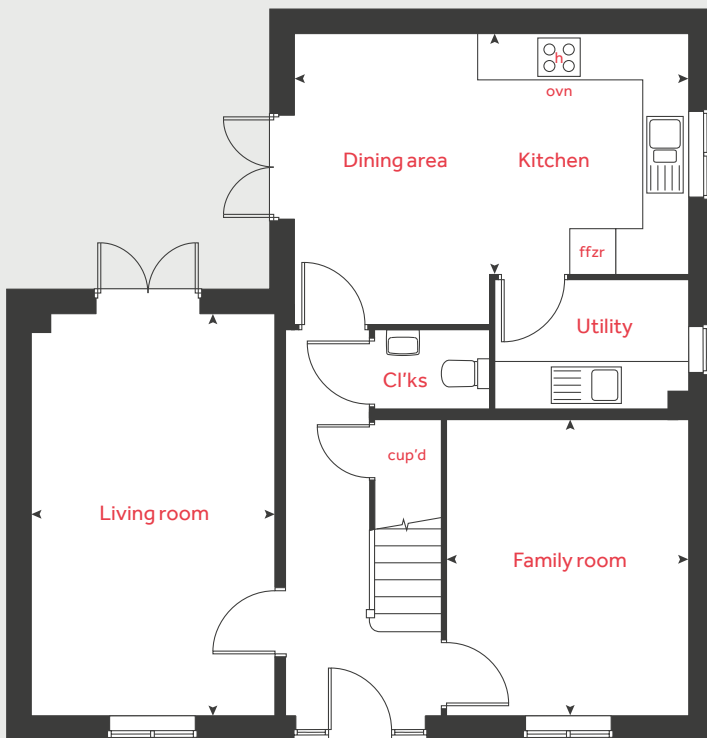
Bedroom 3

3.66m x 2.91m 12' 0" x 9' 7"

Bedroom 4

3.66m x 2.33m 12' 0" x 7' 7"

Ground floor



h	hob	cup'd	cupboard
ovn	oven	◀ ▶	measuring points
ffzr	fridge freezer		

Please note, floorplans and dimensions are taken from architectural drawings and are for guidance only. Dimensions stated are within a tolerance of plus or minus 50mm. Overall dimensions are usually stated and there may be projections into these. With our continual improvement policy we constantly review our designs and specification to ensure we deliver the best products to our customers. Computer generated images not to scale. Finishes and materials may vary and landscaping is illustrative only. Kitchen layouts are indicative only and may change. To confirm specific details on our homes please see our sales consultant.

Produced by Vistry Group Design Studio.

When you have finished with this leaflet please recycle it.

WBISH GD60266 / 12.21

Linden
HOMES