

Cherrywood Place Development update

Issue 1 | Summer 2026



Keeping you updated

We wanted to provide you with an update on the development and what you can expect from us over the coming months.

Overview

Cherrywood Place provides a collection of 2, 3, 4 and 5-bedroom new build houses designed with you in mind, located in the friendly market town of Soham, East Anglia.

This new housing development will be about more than just homes – it'll be a community. With nearly 200 new houses, plenty of green spaces, two play areas and walking paths, there'll be plenty of room to relax, explore and connect with your neighbours.

The development will feature two, three, four and five-bedroom homes of a mixed tenure offering private homes and affordable housing under various schemes including shared ownership & affordable rent.

Site activity

- Current build is 8% complete and site is progressing per build route and programme.
- Sub station will be live in July and Pump Station on-site will be live July/August.
- Area of Play will begin construction end of 2026.
- Roads are 80% complete on-site and footpaths will be installed as per build programme and occupations.

Timeline



- First occupations will be in June 2026
- The Sales Centre is now open.
- Show home – The Mylne & View home – The Becket can be viewed.
- The team at the Soham development is led by site manager, Michael Parker.

Managing agent

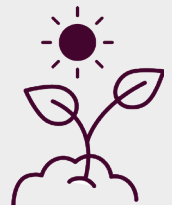
- Trinity (Estates) Property Management Limited are acting as managing agents.
- Trinity (Estates) Property Management Limited will be responsible for the maintenance of public open spaces & surface water drainage upon completion of the areas/development'
- Please refer to the Development Information document for the full breakdown of services & charges.

Ecology

Biodiversity Strategy has been developed to provide biodiversity opportunities and enhancements within the development.

This development incorporates hedgehog highways, bird and bat boxes, 200 trees planted

Please speak to your Sales Consultant for more information on exact locations.



Services

- The water board: IWNL
- Gas and Electric supplier: British Gas
- Fibre: BT Openreach



The site plan shown on this page has been produced for home identification purposes only and is not to scale. The development layout, landscaping and tenure of all dwellings may be subject to change throughout the course of the development. Homes shown as "pre sold" and other properties sold on the general market may not be sold to individual owner occupiers and may instead be transferred to other purchasers, including private investors or affordable housing providers. As partner arrangements are agreed, the mix of tenures across a development can change significantly and rapidly. Finishes and materials may vary from those shown. Please check the details of your chosen plot and house type with the sales consultant. Development layout plan correct at time of production.

How will the development benefit the local community?

Linden Homes will also support the local community by contributing over £2.5 million towards:

- Improved public transport facilities
- Public open spaces
- Community infrastructure
- Play areas
- Investment into early years expansion
- Library
- Soham Village College capacity
- Highway and road improvements

Please be aware that the dates and information provided are correct at time of print and are dependent on a number of factors, including weather, so are subject to change.

Thank you for your patience while the construction work is taking place. We try to keep disruption to a minimum but appreciate it can be noisy and dirty at times so do contact us if you have any questions, or if you'd like to provide any feedback, by emailing:

CherrywoodPlace.Sales@lindenhomes.co.uk

Linden
HOMES