



# River Gateway Development Plan

## River Gateway

Clanage Road, Bristol, BS3 2JX | 0117 453 0800

[lindenhomes.co.uk](http://lindenhomes.co.uk)

**Linden**  
HOMES

# River Gateway

## Ashton Gate, Bristol

### Development layout



#### Buildings

- Barracks Point
- Castle Rise
- Poppy House
- Weatherly Loft
- Lions Building

1 & 2 bedrooms apartments  
– building plans available

#### Pre sold homes

v	visitor space	ss	sub station
cs	cycle store	bs	bin store

This plan has been produced for home identification purposes only and is not to scale. The development layout, landscaping and tenure of all dwellings may be subject to change throughout the course of the development. Finishes and materials may vary from those shown on the plan. Please check the details of your chosen plot and house type with the sales consultant. Development layout plan correct at time of production.

Cover photograph of the Clifton Suspension Bridge overlooking Ashton Gate, Bristol. Not view from the development.  
The street scene shown has been produced for illustrative purposes only. Please check the details of the homes  
you are interested in with our sales consultant. When you have finished with this leaflet please recycle it.

Vistry Bristol, The Jacobs Building, Berkeley Place, Clifton, Bristol, BS8 1EH T: 0117 930 4949

[lindenhomes.co.uk](http://lindenhomes.co.uk)



**Linden**  
HOMES





# The Leigh, Lions Building

1 bedroom apartment

**River Gateway**

Clanage Road, Bristol, BS3 2JX | 0117 453 0800

[lindenhomes.co.uk](http://lindenhomes.co.uk)

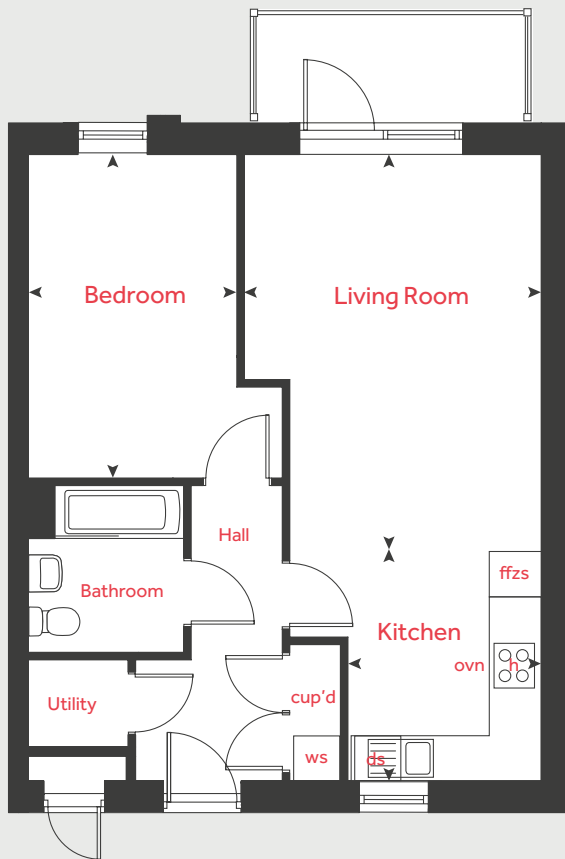
**Linden**  
HOMES

# The Leigh

Lions Building

1 bedroom apartment

Homes 127, 128, 130, 131,  
133 & 134



## Kitchen

2.55m x 3.06m 8'4" x 10'0"

## Living Room

3.84m x 5.21m 12'7" x 17'1"

## Bedroom

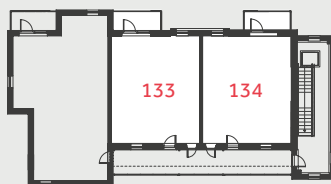
2.75m x 4.27m 9'0" x 14'0"

ovn	oven	ffzs	fridge freezer space
h	hob	cup'd	cupboard
ds	dishwasher space	< >	measuring points
ws	washing machine space		

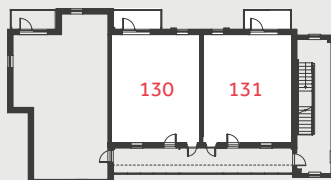
\* Terrace area instead of balcony area applies to Ground floor plots 127 and 128

\* Please note that plots 127, 130 and 133 are handed

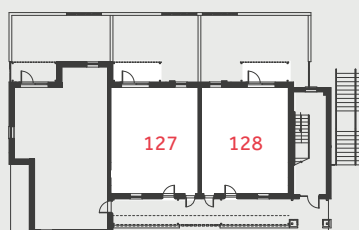
## Second Floor



## First Floor



## Ground Floor



The illustrations shown are computer generated impressions of how the property may look and are indicative only. External details or finishes may vary on individual plots and homes may be built in either detached or attached styles depending on the development layout. Exact specifications, window styles and whether a property is left or righthanded may differ from plot to plot. Please speak to our sales consultant for specific plot details.

The floorplan has been produced for illustrative purposes only. Room sizes shown are between arrow points as indicated on plan. The dimensions have tolerances of + or - 50mm and should not be used other than for general guidance. If specific dimensions are required, enquiries should be made to the sales consultant. The floor plans shown are not to scale. Measurements are based on the original drawings. Slight variations may occur during construction.

11.25

**Linden**  
HOMES





# The Ashton, Lions Building

2 bedroom apartment

**River Gateway**

Clanage Road, Bristol, BS3 2JX | 0117 453 0800

[lindenhomes.co.uk](http://lindenhomes.co.uk)

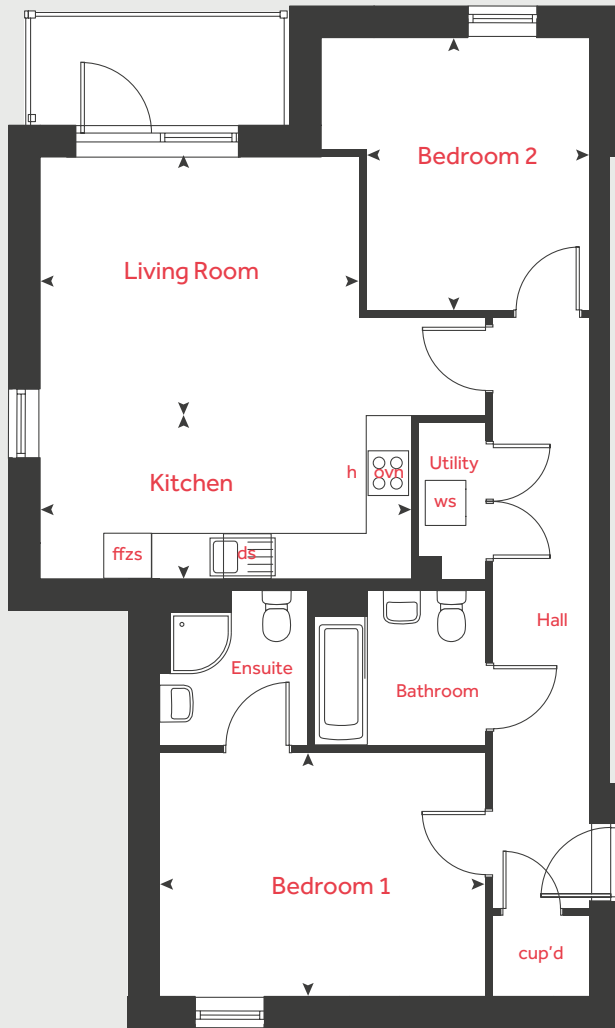
**Linden**  
HOMES

# The Ashton

## Lions Building

### 2 bedroom apartment

Homes 126, 129 & 132



#### Kitchen

4.91m x 2.16m 16'1" x 7'1"

#### Living Room

4.21m x 3.41m 13'10" x 11'2"

#### Bedroom 1

4.31m x 3.21m 14'2" x 10'6"

#### Bedroom 2

2.94m x 3.60m 9'8" x 11'10"

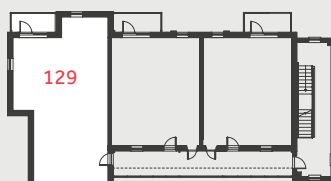
ovn	oven	ffzs	fridge freezer space
h	hob	cup'd	cupboard
ds	dishwasher space	◀ ▶	measuring points
ws	washing machine space		

\* Terrace area instead of balcony area applies to Ground floor plot 126

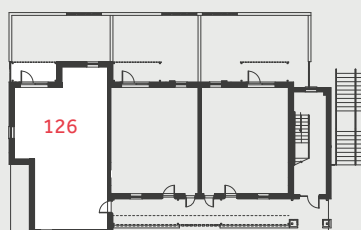
#### Second Floor



#### First Floor



#### Ground Floor



The illustrations shown are computer generated impressions of how the property may look and are indicative only. External details or finishes may vary on individual plots and homes may be built in either detached or attached styles depending on the development layout. Exact specifications, window styles and whether a property is left or righthanded may differ from plot to plot. Please speak to our sales consultant for specific plot details.

The floorplan has been produced for illustrative purposes only. Room sizes shown are between arrow points as indicated on plan. The dimensions have tolerances of + or - 50mm and should not be used other than for general guidance. If specific dimensions are required, enquiries should be made to the sales consultant. The floor plans shown are not to scale. Measurements are based on the original drawings. Slight variations may occur during construction.

11.25

**Linden**  
HOMES