

The Mitford – 4 bedroom home

Ground Floor

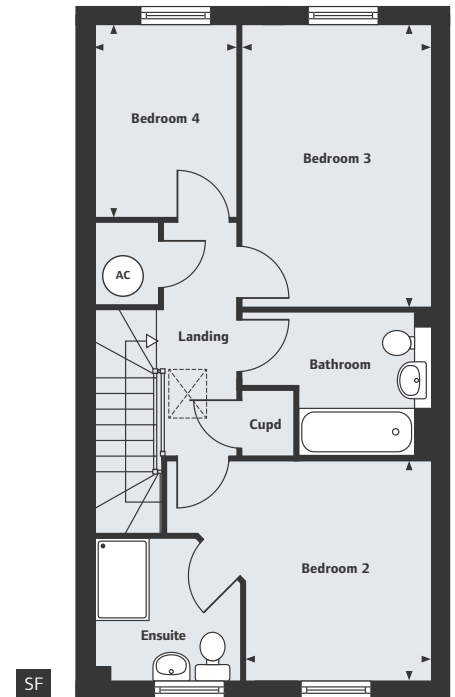
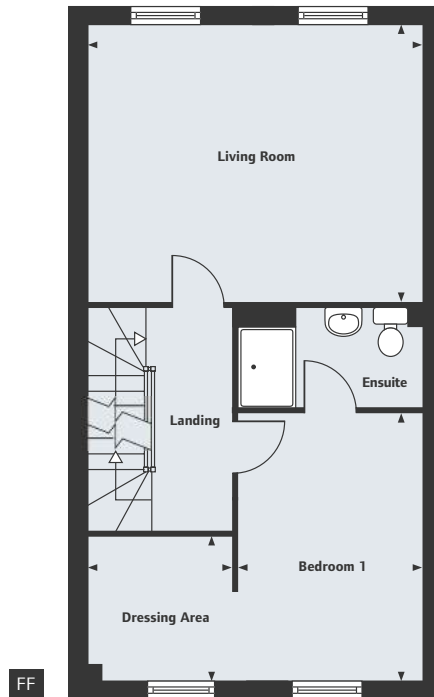
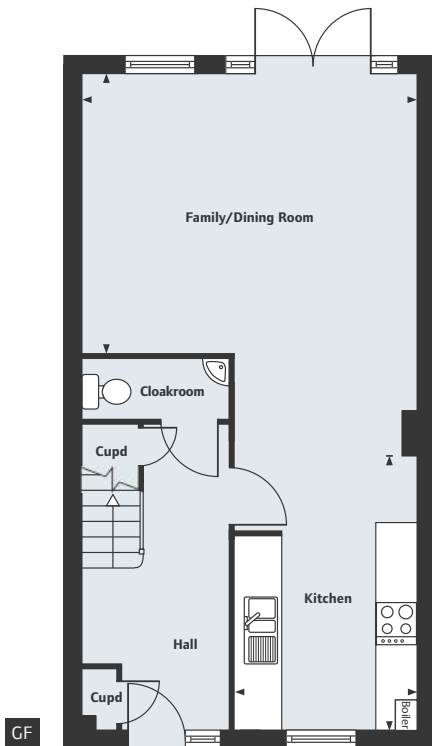
Kitchen	4.05m x 2.65m	13'3" x 8'8"
Family/Dining Room	4.92m x 4.07m	16'2" x 13'4"

First Floor

Living Room	4.92m x 4.07m	16'2" x 13'4"
Bedroom 1	3.89m x 2.65m	12'9" x 8'8"
Dressing Area	2.12m x 2.07m	6'11" x 6'9"

Second Floor

Bedroom 2	3.20m x 2.70m	10'6" x 8'10"
Bedroom 3	4.12m x 2.76m	13'6" x 9'1"
Bedroom 4	2.82m x 2.06m	9'3" x 6'9"



----- Walls and doors optional.

Please note, floor plans and dimensions are taken from architectural drawings and are for guidance only. Dimensions stated are within a tolerance of plus or minus 50mm. Overall dimensions are usually stated and there may be projections into these. With our continual improvement policy we constantly review our designs and specification to ensure we deliver the best product to our customers. Computer generated images not to scale. Finishes and materials may vary and landscaping is illustrative only. Kitchen layouts are indicative only and may change. To confirm specific details on our homes please ask your Sales Executive.