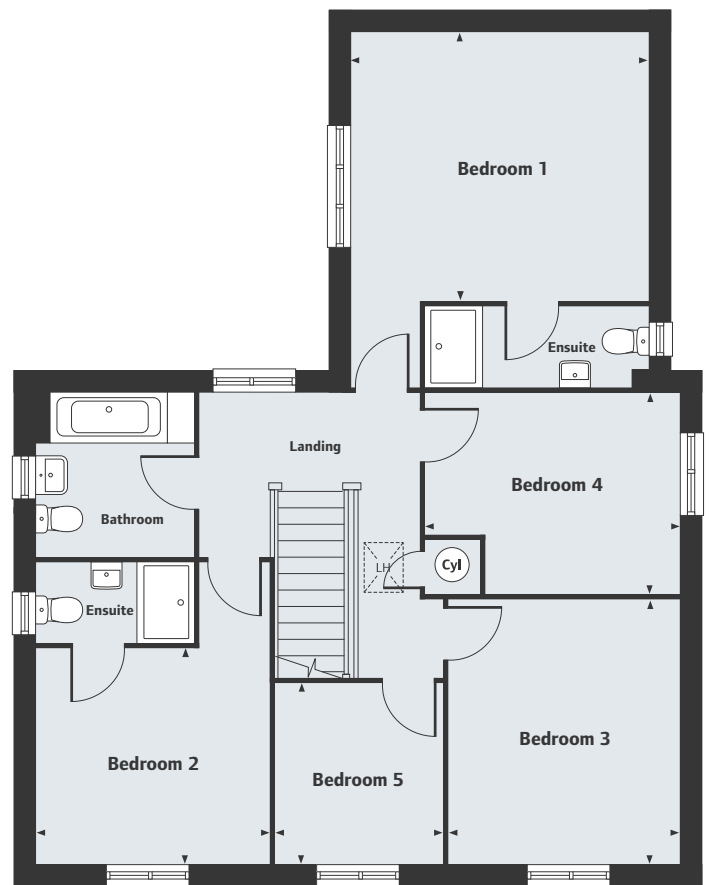
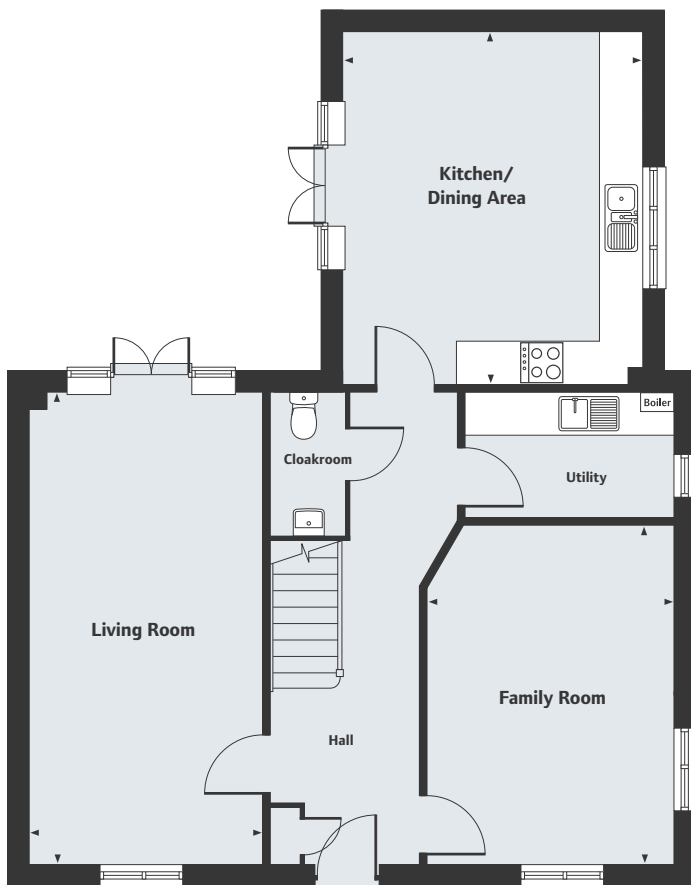


Kingsley Place

Barnack

The Byrne 5 bedroom home



Ground Floor

Living Room	6.77m x 3.33m	22'3" x 10'11"
Kitchen/Dining Area	5.03m x 4.30m	16'6" x 14'1"
Family Room	4.90m x 3.52m	16'1" x 11'7"

First Floor

Bedroom 1	4.30m x 3.83m	14'1" x 12'7"
Bedroom 2	3.35m x 3.10m	11'0" x 10'2"
Bedroom 3	3.81m x 3.31m	12'6" x 10'10"
Bedroom 4	3.64m x 2.87m	11'11" x 9'5"
Bedroom 5	2.61m x 2.40m	8'7" x 7'10"

LH Loft hatch

For all sales enquiries please call
01780 778 289
lindenhomes.co.uk/kingsleyplace

Please note, floorplans and dimensions are taken from architectural drawings and are for guidance only. Dimensions stated are within a tolerance of plus or minus 50mm. Overall dimensions are usually stated and there may be projections into these. With our continual improvement policy we constantly review our designs and specification to ensure we deliver the best product to our customers. Computer generated images not to scale. Specific finishes and materials may vary and may or may not be included on certain house types. This includes types and colours of brick, brick headers, doors, roof tiles, fascia's, gutters, canopy's, chimneys, windows, bay windows and sills. Homes may have site specific elevational treatment. Please refer to site specific house type drawings. Landscaping is illustrative only. Kitchen layouts are indicative only and may change. For the exact specification, details of external and internal finishes, dimensions and floorplan differences and any other specific details on our homes please ask your Sales Executive. XLMID934/November 2018.


Linden
HOMES