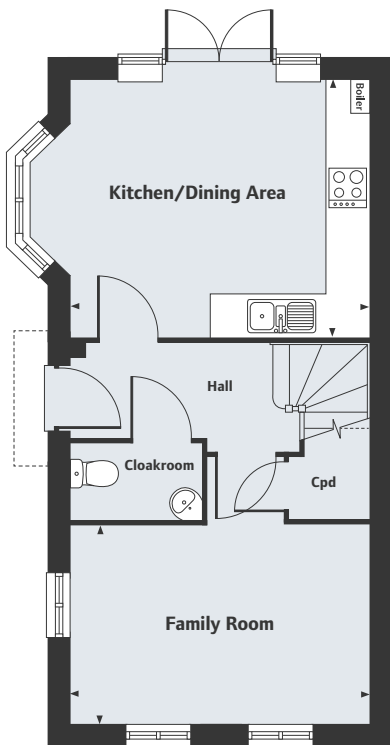


Hawkswood

Bicester

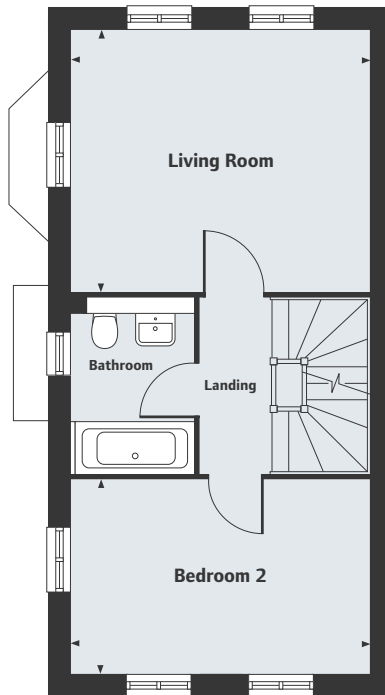
The Chestnut

3 bedroom home



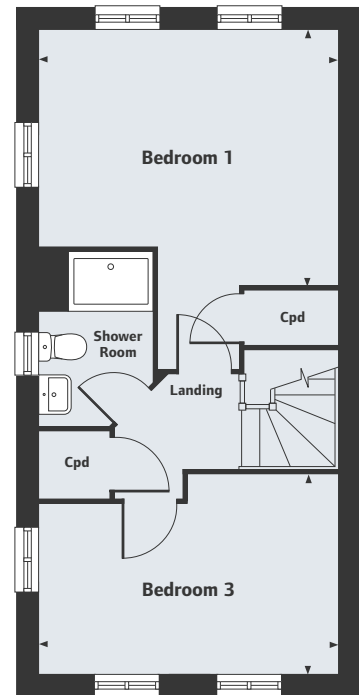
Ground Floor

Kitchen/Dining Area	4.18m x 3.60m	13'8" x 11'10"
Family Room	4.18m x 2.78m	13'8" x 9'1"



First Floor

Living Room	4.18m x 3.60m	13'8" x 11'10"
Bedroom 2	4.18m x 2.79m	13'8" x 9'2"



Second Floor

Bedroom 1	4.18m x 3.57m	13'8" x 11'8"
Bedroom 3	4.18m x 2.81m	13'8" x 9'2"

For all sales enquiries please call
01869 722 416
lindenhomes.co.uk/hawkswood

Please note, floorplans and dimensions are taken from architectural drawings and are for guidance only. Dimensions stated are within a tolerance of plus or minus 50mm. Overall dimensions are usually stated and there may be projections into these. With our continual improvement policy we constantly review our designs and specification to ensure we deliver the best product to our customers. Computer generated images not to scale. Finishes and materials may vary and landscaping is illustrative only. Kitchen layouts are indicative only and may change. To confirm specific details on our homes please ask your Sales Executive.
 XLHTV759/January 2019.

Linden
 HOMES