

—
Wilshere Park
Welwyn
—

Development layout



Wilshere Park

Welwyn AL6 9GJ

1, 2 & 3 bedroom apartments and 4 & 5 bedroom houses

01707 861 347

Not to scale. Trees and landscaping are indicative only and may alter during construction. The trees, shrubs and gardens shown are illustrative only. Finishes and materials may vary from those shown here. Please ask your Sales Executive for specific details. September 2018.


Linden
HOMES

Specification

Kitchens

- Kitchen units from the Symphony Plaza range
- Inset 1½ bowl stainless steel sink with chrome mixer tap
- AEG stainless steel under counter single oven and 60cm gas hob
- Electrolux integrated hood and splashback
- Fully integrated Zanussi fridge/freezer
- Fully integrated Zanussi dishwasher
- Fully integrated Zanussi washing machine (freestanding when located in cupboard)
- Karndean flooring

Bathrooms, cloakrooms & en-suites

- Ideal Standard sanitaryware with contemporary chrome fittings
- Porcelanosa half height wall tiling behind sanitaryware in cloakroom, bathroom and en-suite
- Porcelanosa full height wall tiling to shower enclosure
- Romans sliding shower screen to en-suite, Romans bath screen where no en-suite is provided
- Heated towel rail in white to bathroom and en-suite
- Karndean flooring

Electrical & lighting

- BT points to multiple locations
- Sky+/DAB FM/TV to multiple locations
- White low energy downlighters to kitchen area and wet rooms
- White low energy pendant light fittings elsewhere
- Mains powered smoke detectors with rechargeable back up battery
- Battery operated carbon monoxide detector adjacent to boiler
- Mains operated stainless steel doorbell to front doors
- Audio entry phone system to wall-mounted handset

Internal finishes

- Internal doors finished in white with polished chrome handles
- Internal walls finished in brilliant white matt emulsion
- Internal woodwork in white gloss finish

Heating

- Gas fired central heating

General

- Double glazed windows

Peace of mind

Each home will be independently surveyed during construction by the NHBC, who will issue their 10 year warranty certificate on completion of the home.

Linden Homes subscribes to the consumer Code of Conduct. Please refer to your Sales Executive for details.

Specification may be amended at any time without notice. Please check specific plot details with your Sales Executive prior to commitment, particularly on items which are more important to you.

Wilshere Park

Welwyn AL6 9GJ

1 & 2 bedroom apartments

01707 861 347

Please refer to the Sales Executive for details.
Specification may be amended at any time without notice.
Photography is for illustrative purposes only and may include
upgrades and extras available at additional cost.
January 2018.

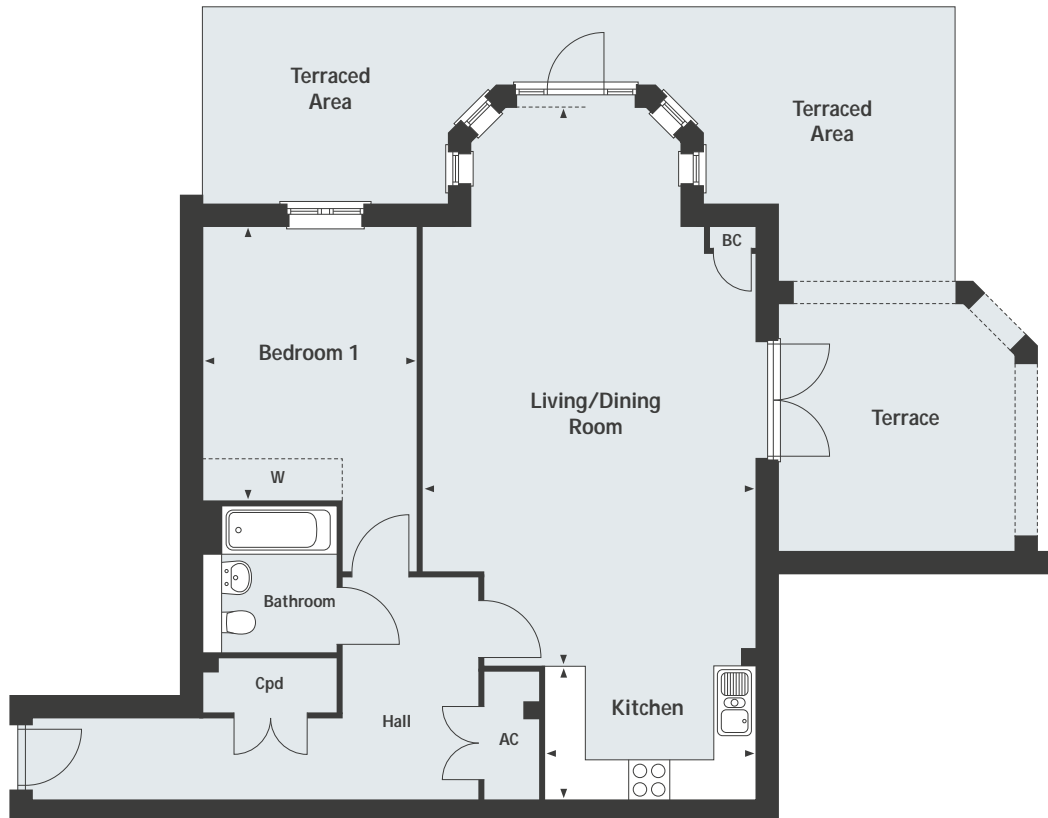
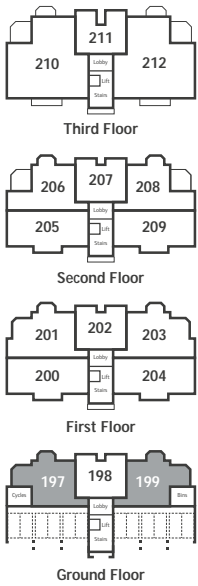
Wilshere Park
Welwyn

Emerald House
1 bedroom home



Rear elevation.

Homes 197* & 199



Ground Floor Homes 197* & 199

Living/Dining Room	8.19 x 4.88m	26'10" x 16'0"
Kitchen	3.10 x 1.97m	10'2" x 6'5"
Bedroom 1	4.02 x 3.13m	13'2" x 10'3"

Cpd = Cupboard
BC = Boiler cupboard
AC = Airing cupboard
W = Space for wardrobe

* Home 197 is handed.

Wilshere Park
Welwyn AL6 9GJ
1, 2 & 3 bedroom apartments and 4 & 5 bedroom houses
01707 861 347

Please note, floor plans and dimensions are taken from architectural drawings and are for guidance only. Dimensions stated are within a tolerance of plus or minus 50mm. Overall dimensions are usually stated and there may be projections into these. With our continual improvement policy we constantly review our designs and specification to ensure we deliver the best product to our customers. Computer generated images not to scale. Finishes and materials may vary and landscaping is illustrative only. Kitchen layouts are indicative only and may change. To confirm specific details on our homes please ask your Sales Executive. September 2018.



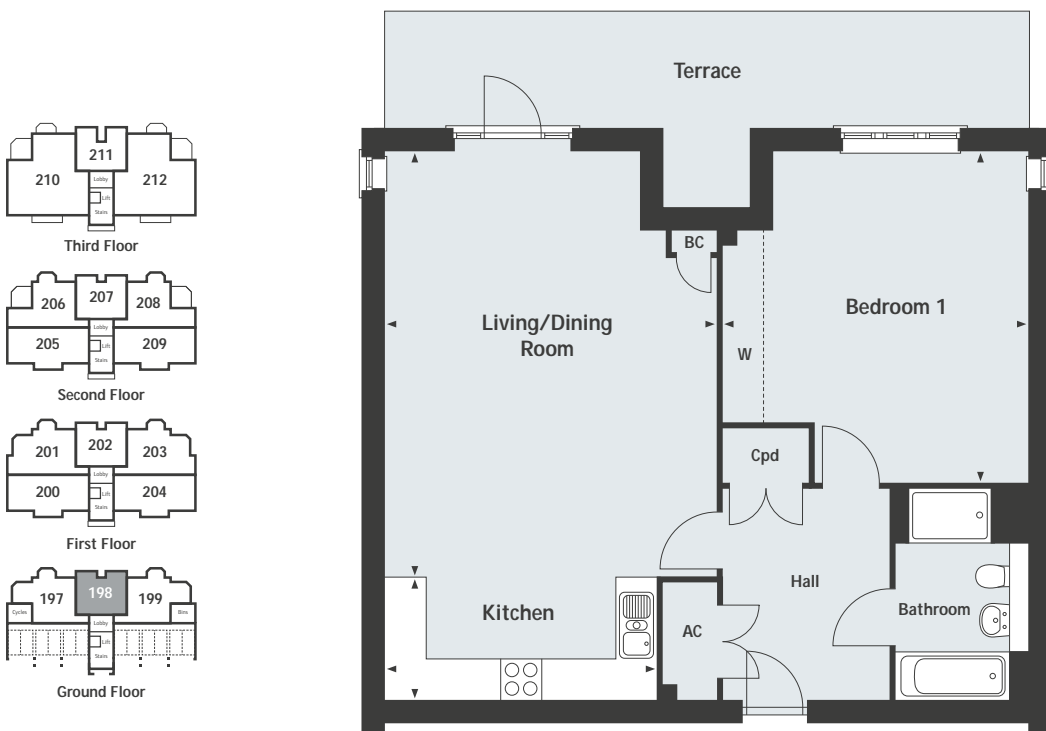
—
Wilshere Park
 Welwyn

Emerald House
 1 bedroom home



Rear elevation.

Home 198



Ground Floor Home 198

Living/Dining Room	6.24 x 4.88m	20'5" x 16'0"	
Kitchen	4.00 x 1.80m	13'1" x 5'11"	
Bedroom 1	4.86 x 4.48m	15'11" x 14'8"	
			Cpd = Cupboard
			BC = Boiler cupboard
			AC = Airing cupboard
			W = Space for wardrobe

Wilshere Park
 Welwyn AL6 9GJ
 1, 2 & 3 bedroom apartments and 4 & 5 bedroom houses
01707 861 347

Please note, floor plans and dimensions are taken from architectural drawings and are for guidance only. Dimensions stated are within a tolerance of plus or minus 50mm. Overall dimensions are usually stated and there may be projections into these. With our continual improvement policy we constantly review our designs and specification to ensure we deliver the best product to our customers. Computer generated images not to scale. Finishes and materials may vary and landscaping is illustrative only. Kitchen layouts are indicative only and may change. To confirm specific details on our homes please ask your Sales Executive. September 2018.



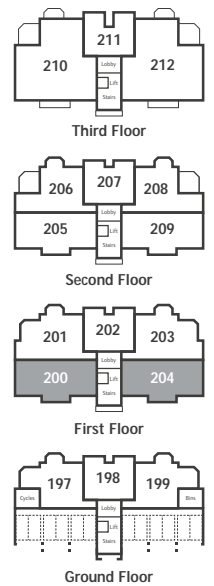
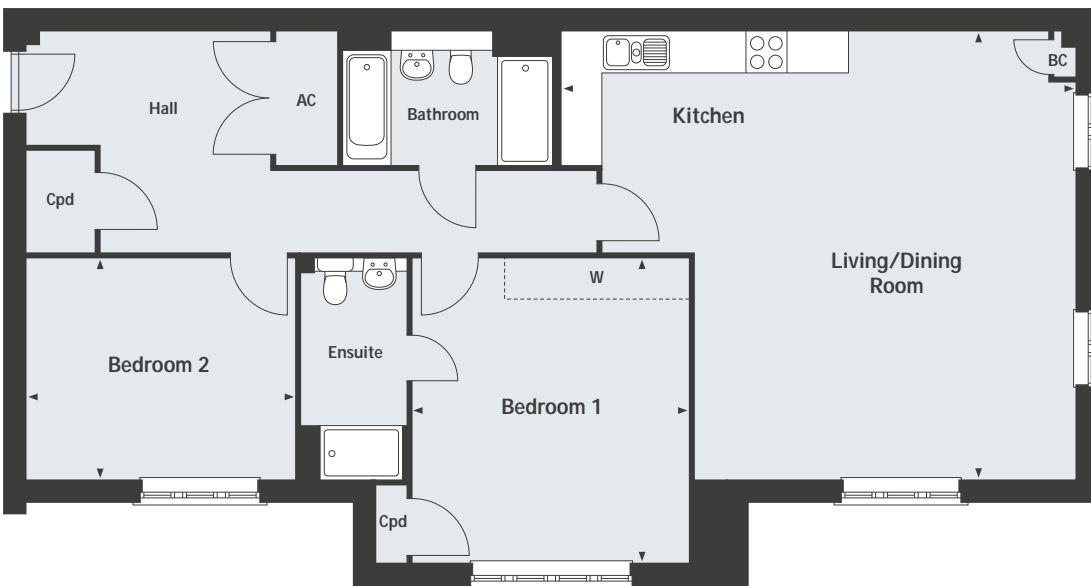
—
Wilshere Park
 Welwyn

Emerald House
 2 bedroom home



Rear elevation.

Homes 200* & 204



First Floor Homes 200* & 204

Living/Dining Room/Kitchen

7.54 x 6.57m 24'9" x 21'6"

Bedroom 1

4.48 x 4.04m 14'8" x 13'3"

Bedroom 2

3.94 x 3.25m 12'11" x 10'7"

Cpd = Cupboard

BC = Boiler cupboard

AC = Airing cupboard

W = Space for wardrobe

* Home 200 is handed.

Wilshere Park

Welwyn AL6 9GJ

1, 2 & 3 bedroom apartments and 4 & 5 bedroom houses

01707 861 347

Please note, floor plans and dimensions are taken from architectural drawings and are for guidance only. Dimensions stated are within a tolerance of plus or minus 50mm. Overall dimensions are usually stated and there may be projections into these. With our continual improvement policy we constantly review our designs and specification to ensure we deliver the best product to our customers. Computer generated images not to scale. Finishes and materials may vary and landscaping is illustrative only. Kitchen layouts are indicative only and may change. To confirm specific details on our homes please ask your Sales Executive. September 2018.



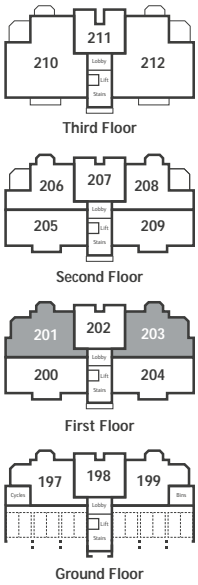
Wilshere Park
Welwyn

Emerald House
2 bedroom home



Rear elevation.

Homes 201* & 203



First Floor Homes 201* & 203

Living/Dining Room/Kitchen

7.41 x 4.88m 24'3" x 16'0"

Bedroom 1
4.71 x 3.32m 15'5" x 10'10"

Bedroom 2
4.02 x 3.13m 13'2" x 10'3"

Cpd = Cupboard

BC = Boiler cupboard

AC = Airing cupboard

W = Space for wardrobe

* Home 201 is handed.

Wilshere Park

Welwyn AL6 9GJ

1, 2 & 3 bedroom apartments and 4 & 5 bedroom houses

01707 861 347

Please note, floor plans and dimensions are taken from architectural drawings and are for guidance only. Dimensions stated are within a tolerance of plus or minus 50mm. Overall dimensions are usually stated and there may be projections into these. With our continual improvement policy we constantly review our designs and specification to ensure we deliver the best product to our customers. Computer generated images not to scale. Finishes and materials may vary and landscaping is illustrative only. Kitchen layouts are indicative only and may change. To confirm specific details on our homes please ask your Sales Executive. September 2018.



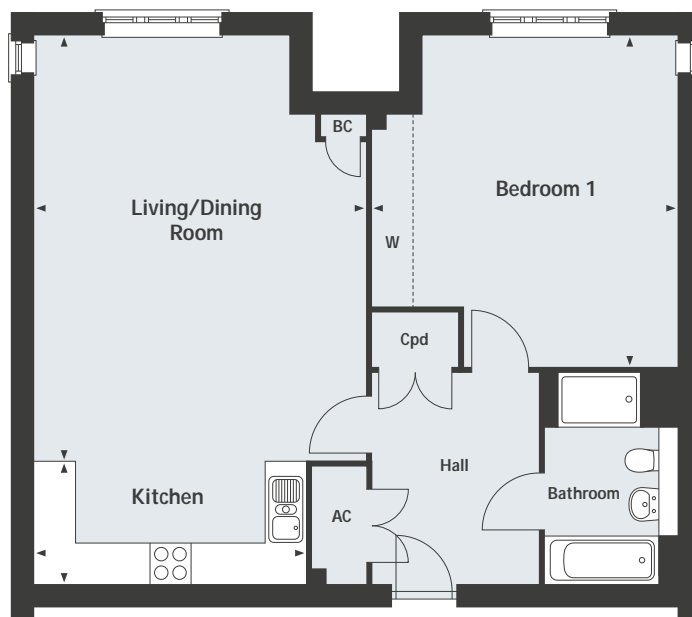
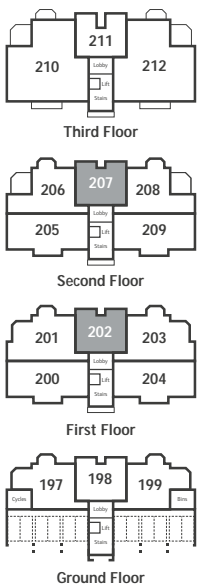
Wilshere Park
Welwyn

Emerald House
1 bedroom home



Rear elevation.

Homes 202 & 207



First & Second Floors Homes 202 & 207

Living/Dining Room	6.24 x 4.88m	20'5" x 16'0"	
Kitchen	4.00 x 1.80m	13'1" x 5'11"	
Bedroom 1	4.86 x 4.48m	15'11" x 14'8"	
			Cpd = Cupboard
			BC = Boiler cupboard
			AC = Airing cupboard
			W = Space for wardrobe

Wilshere Park
Welwyn AL6 9GJ
1, 2 & 3 bedroom apartments and 4 & 5 bedroom houses
01707 861 347

Please note, floor plans and dimensions are taken from architectural drawings and are for guidance only. Dimensions stated are within a tolerance of plus or minus 50mm. Overall dimensions are usually stated and there may be projections into these. With our continual improvement policy we constantly review our designs and specification to ensure we deliver the best product to our customers. Computer generated images not to scale. Finishes and materials may vary and landscaping is illustrative only. Kitchen layouts are indicative only and may change. To confirm specific details on our homes please ask your Sales Executive. September 2018.



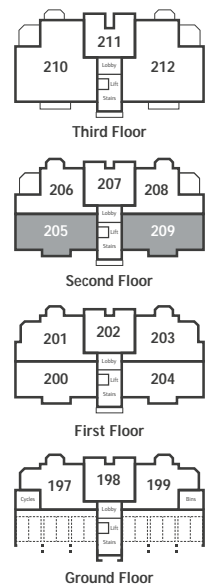
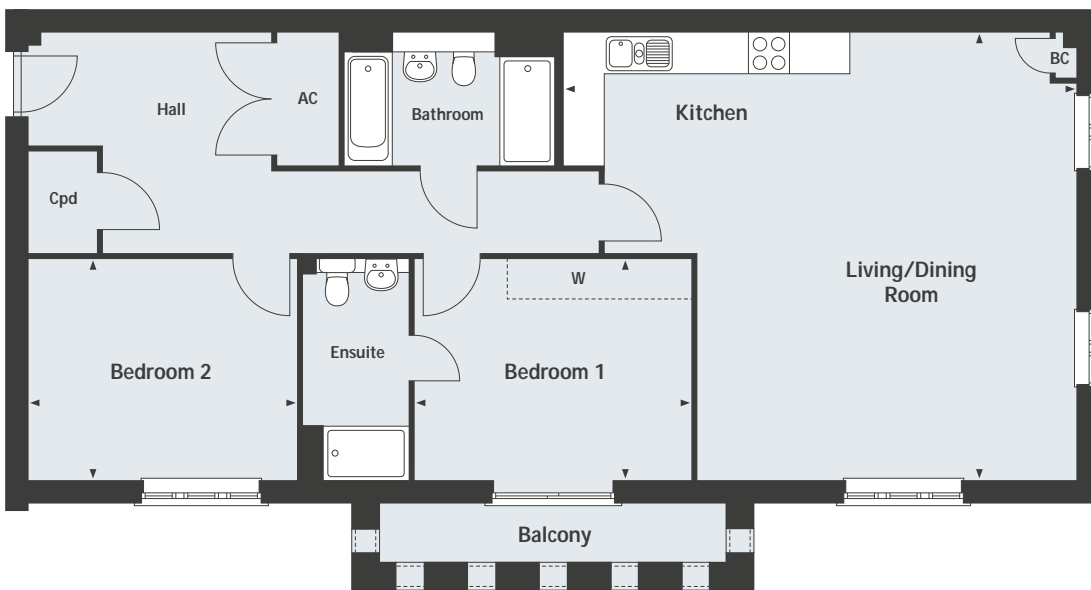
—
Wilshere Park
 Welwyn

Emerald House
 2 bedroom home



Rear elevation.

Homes 205* & 209



Second Floor Homes 205* & 209

Living/Dining Room/Kitchen

7.54 x 6.57m 24'9" x 21'6"

Bedroom 1 4.04 x 3.25m 13'3" x 10'7"

Bedroom 2 3.94 x 3.25m 12'11" x 10'7"

Cpd = Cupboard

BC = Boiler cupboard

AC = Airing cupboard

W = Space for wardrobe

* Home 205 is handed.

Wilshere Park

Welwyn AL6 9GJ

1, 2 & 3 bedroom apartments and 4 & 5 bedroom houses

01707 861 347

Please note, floor plans and dimensions are taken from architectural drawings and are for guidance only. Dimensions stated are within a tolerance of plus or minus 50mm. Overall dimensions are usually stated and there may be projections into these. With our continual improvement policy we constantly review our designs and specification to ensure we deliver the best product to our customers. Computer generated images not to scale. Finishes and materials may vary and landscaping is illustrative only. Kitchen layouts are indicative only and may change. To confirm specific details on our homes please ask your Sales Executive. September 2018.



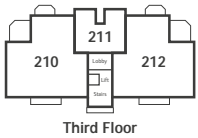
Wilshere Park
Welwyn

Emerald House
2 bedroom home

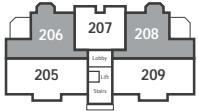


Rear elevation.

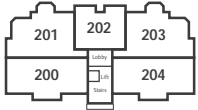
Homes 206* & 208



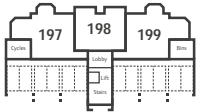
Third Floor



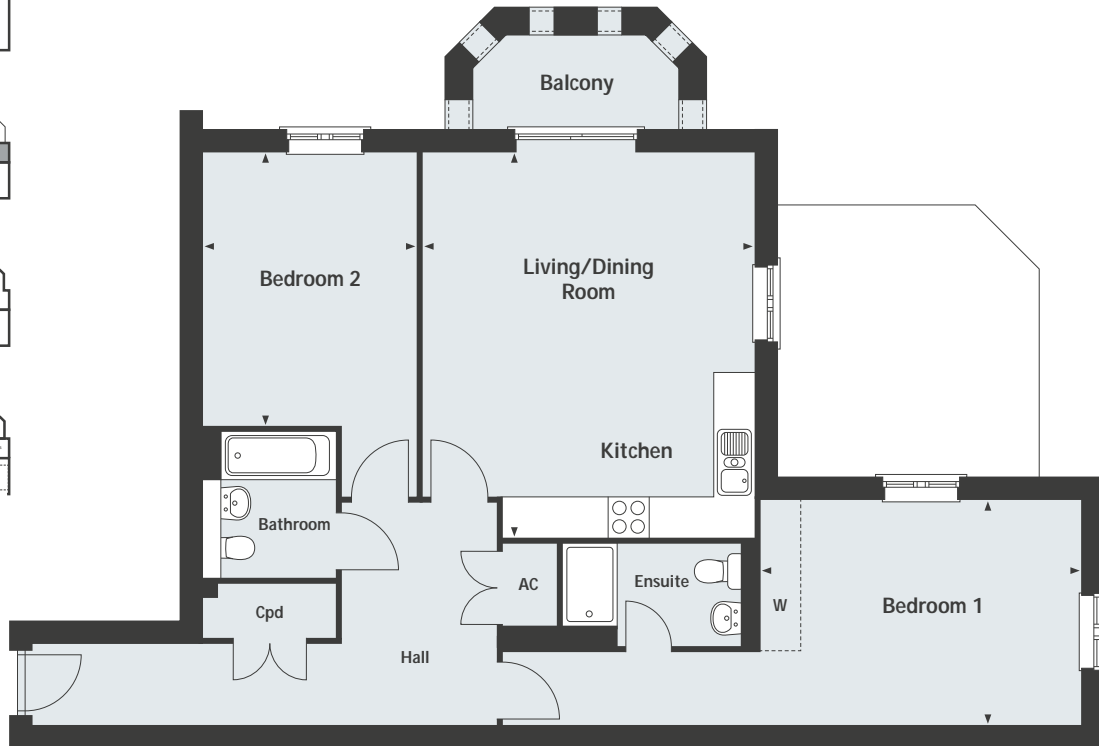
Second Floor



First Floor



Ground Floor



Second Floor Homes 206* & 208

Living/Dining Room/Kitchen

5.66 x 4.88m 18'6" x 16'0"

Bedroom 1 4.71 x 3.32m 15'5" x 10'10"

Bedroom 2 4.02 x 3.13m 13'2" x 10'3"

Cpd = Cupboard

AC = Airing cupboard

W = Space for wardrobe

* Home 206 is handed.

Wilshere Park

Welwyn AL6 9GJ

1, 2 & 3 bedroom apartments and 4 & 5 bedroom houses

01707 861 347

Please note, floor plans and dimensions are taken from architectural drawings and are for guidance only. Dimensions stated are within a tolerance of plus or minus 50mm. Overall dimensions are usually stated and there may be projections into these. With our continual improvement policy we constantly review our designs and specification to ensure we deliver the best product to our customers. Computer generated images not to scale. Finishes and materials may vary and landscaping is illustrative only. Kitchen layouts are indicative only and may change. To confirm specific details on our homes please ask your Sales Executive. September 2018.


Linden
HOMES

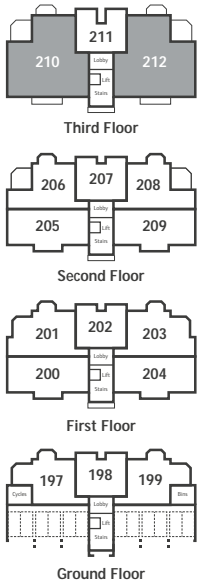
Wilshere Park
Welwyn

Emerald House
2 bedroom home



Rear elevation.

Homes 210* & 212



Third Floor Homes 210* & 212

Living/Dining Room/Kitchen	9.84 x 5.02m	32'3" x 16'5"
Bedroom 1	4.90 x 3.80m	16'1" x 12'5"
Bedroom 2	4.21 x 3.72m	13'9" x 12'2"

Cpd = Cupboard

AC = Airing cupboard

W = Space for wardrobe

---- = Reduced ceiling height.
Please speak to Sales Executive
for further details.

* Home 210 is handed.

Wilshere Park

Welwyn AL6 9GJ

1, 2 & 3 bedroom apartments and 4 & 5 bedroom houses

01707 861 347

Please note, floor plans and dimensions are taken from architectural drawings and are for guidance only. Dimensions stated are within a tolerance of plus or minus 50mm. Overall dimensions are usually stated and there may be projections into these. With our continual improvement policy we constantly review our designs and specification to ensure we deliver the best product to our customers. Computer generated images not to scale. Finishes and materials may vary and landscaping is illustrative only. Kitchen layouts are indicative only and may change. To confirm specific details on our homes please ask your Sales Executive. September 2018.


Linden
HOMES

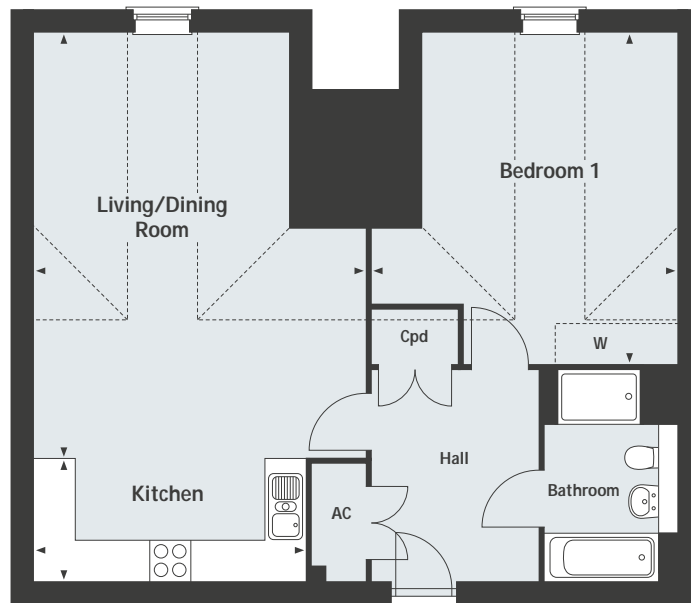
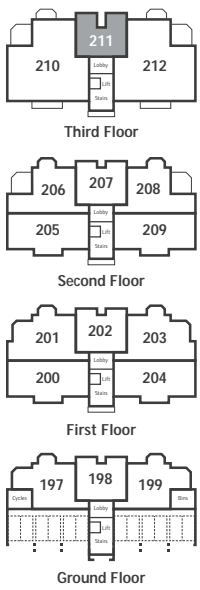
Wilshere Park
Welwyn

Emerald House
1 bedroom home



Rear elevation.

Home 211



Third Floor Home 211

Living/Dining Room	6.24 x 4.88m	20'5" x 16'0"
Kitchen	4.00 x 1.80m	13'1" x 5'10"
Bedroom 1	4.86 x 4.48m	15'11" x 14'8"

Cpd = Cupboard

AC = Airing cupboard

W = Space for wardrobe

---- = Reduced ceiling height.
Please speak to Sales Executive
for further details.

Wilshere Park

Welwyn AL6 9GJ

1, 2 & 3 bedroom apartments and 4 & 5 bedroom houses

01707 861 347

Please note, floor plans and dimensions are taken from architectural drawings and are for guidance only. Dimensions stated are within a tolerance of plus or minus 50mm. Overall dimensions are usually stated and there may be projections into these. With our continual improvement policy we constantly review our designs and specification to ensure we deliver the best product to our customers. Computer generated images not to scale. Finishes and materials may vary and landscaping is illustrative only. Kitchen layouts are indicative only and may change. To confirm specific details on our homes please ask your Sales Executive. September 2018.



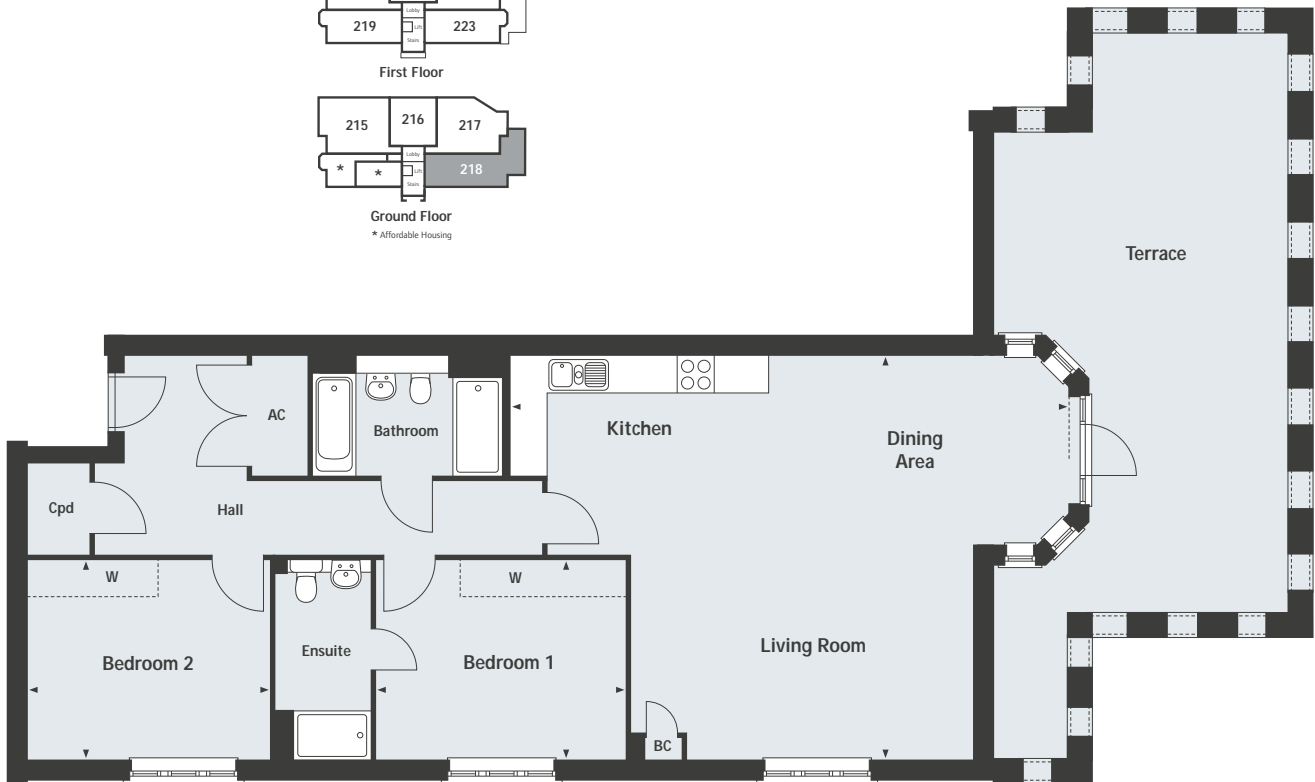
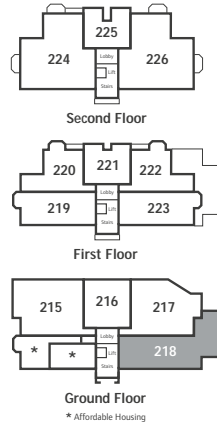
Wilshere Park
Welwyn

Brunswick House
2 bedroom home



Rear elevation.

Home 218



Ground Floor Home 218

Living/Dining Area/Kitchen

9.09 x 6.57m 29'10" x 21'6"

Bedroom 1
4.04 x 3.25m 13'3" x 10'7"

Bedroom 2
3.94 x 3.25m 12'11" x 10'7"

Cpd = Cupboard
BC = Boiler cupboard
AC = Airing cupboard
W = Space for wardrobe

Wilshere Park

Welwyn AL6 9GJ

1, 2 & 3 bedroom apartments and 4 & 5 bedroom houses

01707 861 347

Please note, floor plans and dimensions are taken from architectural drawings and are for guidance only. Dimensions stated are within a tolerance of plus or minus 50mm. Overall dimensions are usually stated and there may be projections into these. With our continual improvement policy we constantly review our designs and specification to ensure we deliver the best product to our customers. Computer generated images not to scale. Finishes and materials may vary and landscaping is illustrative only. Kitchen layouts are indicative only and may change. To confirm specific details on our homes please ask your Sales Executive. September 2018.

Linden
HOMES

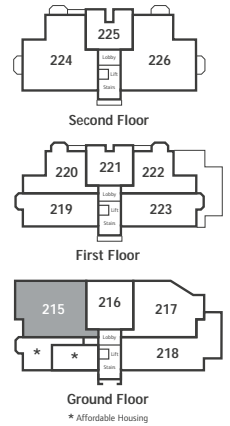
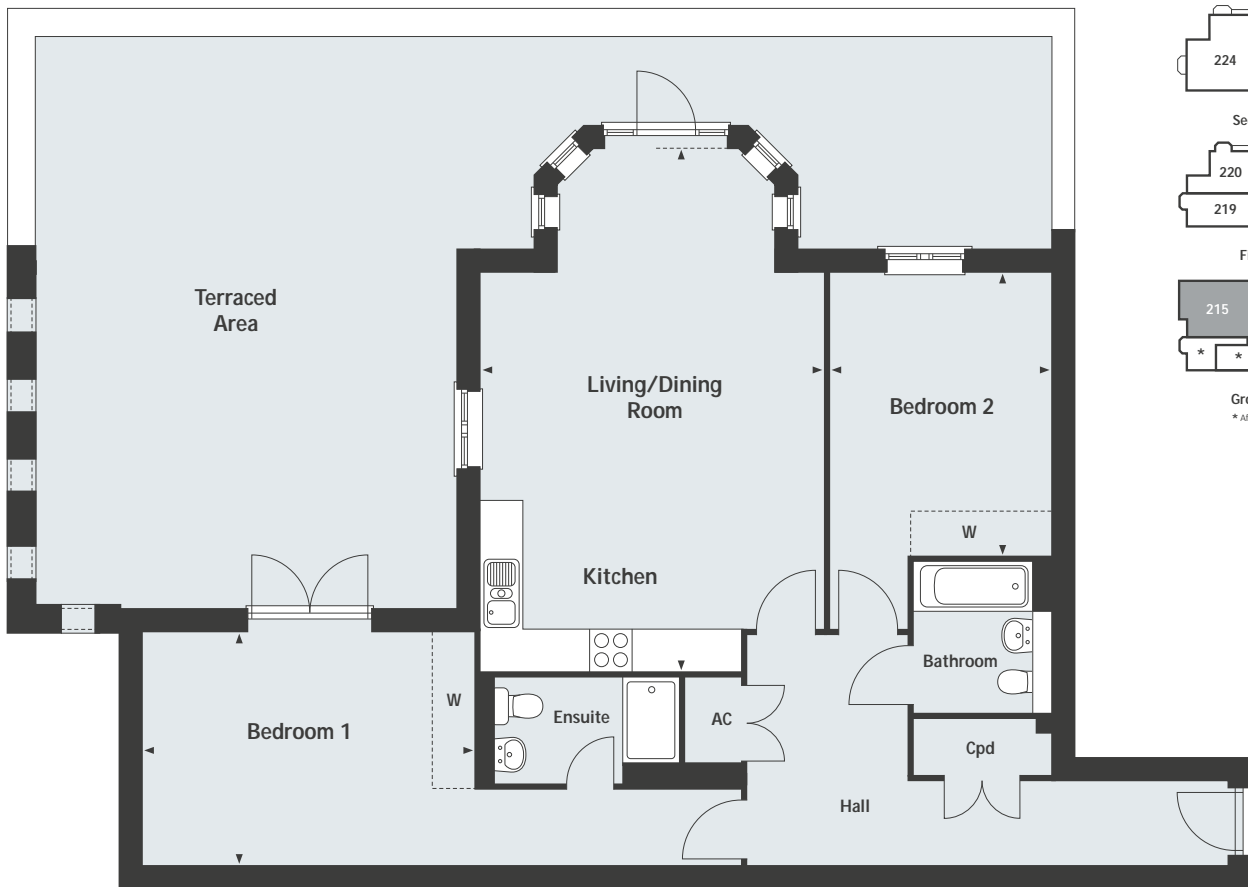
Wilshere Park
Welwyn

Brunswick House
2 bedroom home



Rear elevation.

Home 215



Ground Floor Home 215

Living/Dining Room/Kitchen	7.41 x 4.88m	24'3" x 16'0"
Bedroom 1	4.71 x 3.32m	15'5" x 10'10"
Bedroom 2	4.02 x 3.13m	13'2" x 10'3"

Cpd = Cupboard
AC = Airing cupboard
W = Space for wardrobe

Wilshere Park
Welwyn AL6 9GJ
1, 2 & 3 bedroom apartments and 4 & 5 bedroom houses
01707 861 347

Please note, floor plans and dimensions are taken from architectural drawings and are for guidance only. Dimensions stated are within a tolerance of plus or minus 50mm. Overall dimensions are usually stated and there may be projections into these. With our continual improvement policy we constantly review our designs and specification to ensure we deliver the best product to our customers. Computer generated images not to scale. Finishes and materials may vary and landscaping is illustrative only. Kitchen layouts are indicative only and may change. To confirm specific details on our homes please ask your Sales Executive. September 2018.



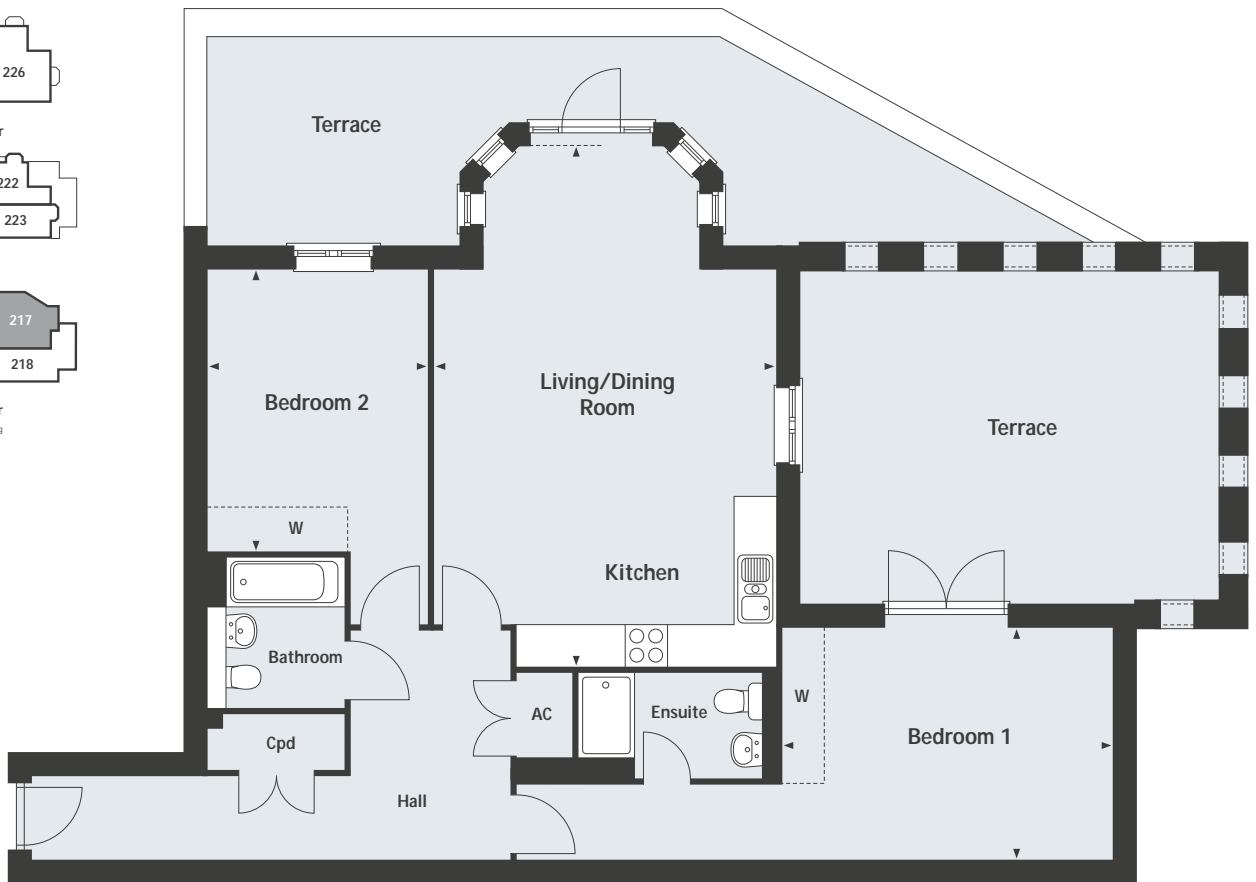
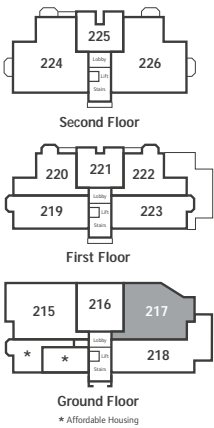
Wilshere Park
Welwyn

Brunswick House
2 bedroom home



Rear elevation.

Home 217



Ground Floor Home 217

Living/Dining Room/Kitchen	7.41 x 4.88m	24'3" x 16'0"
Bedroom 1	4.71 x 3.32m	15'5" x 10'10"
Bedroom 2	4.02 x 3.13m	13'2" x 10'3"

Cpd = Cupboard
AC = Airing cupboard
W = Space for wardrobe

Wilshere Park
Welwyn AL6 9GJ
1, 2 & 3 bedroom apartments and 4 & 5 bedroom houses
01707 861 347

Please note, floor plans and dimensions are taken from architectural drawings and are for guidance only. Dimensions stated are within a tolerance of plus or minus 50mm. Overall dimensions are usually stated and there may be projections into these. With our continual improvement policy we constantly review our designs and specification to ensure we deliver the best product to our customers. Computer generated images not to scale. Finishes and materials may vary and landscaping is illustrative only. Kitchen layouts are indicative only and may change. To confirm specific details on our homes please ask your Sales Executive. September 2018.



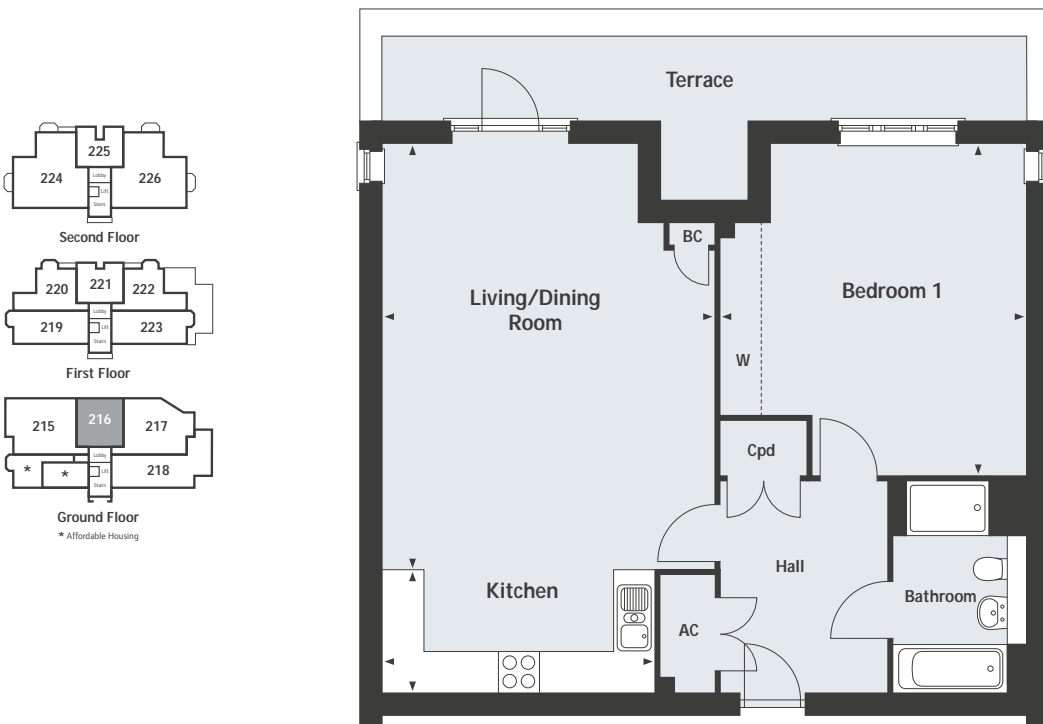
Wilshere Park
Welwyn

Brunswick House
1 bedroom home



Rear elevation.

Homes 216



Ground Floor Home 216

Living/Dining Room	6.24 x 4.88m	20'5" x 16'0"	Cpd = Cupboard
Kitchen	4.00 x 1.80m	13'1" x 5'10"	BC = Boiler cupboard
Bedroom 1	4.86 x 4.48m	15'11" x 14'8"	AC = Airing cupboard
			W = Space for wardrobe

Wilshere Park
Welwyn AL6 9GJ
1, 2 & 3 bedroom apartments and 4 & 5 bedroom houses
01707 861 347

Please note, floor plans and dimensions are taken from architectural drawings and are for guidance only. Dimensions stated are within a tolerance of plus or minus 50mm. Overall dimensions are usually stated and there may be projections into these. With our continual improvement policy we constantly review our designs and specification to ensure we deliver the best product to our customers. Computer generated images not to scale. Finishes and materials may vary and landscaping is illustrative only. Kitchen layouts are indicative only and may change. To confirm specific details on our homes please ask your Sales Executive. September 2018.



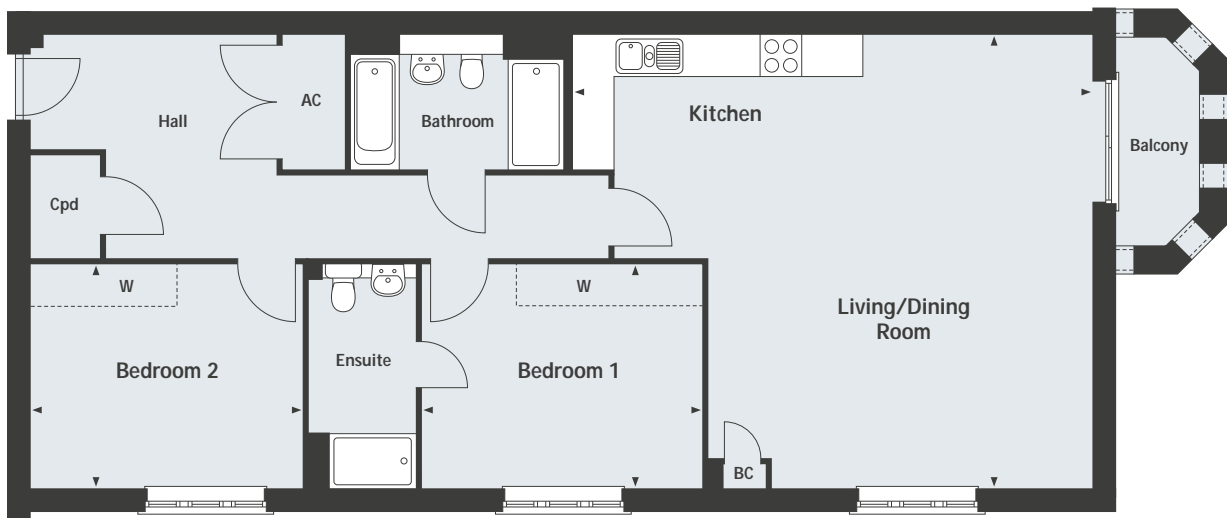
—
Wilshere Park
 Welwyn

Brunswick House
 2 bedroom home



Rear elevation.

Homes 219* & 223



First Floor Homes 219 & 223

Living/Dining Room/Kitchen

7.54 x 6.57m 24'9" x 21'6"

Bedroom 1

4.04 x 3.25m 13'3" x 10'7"

Bedroom 2

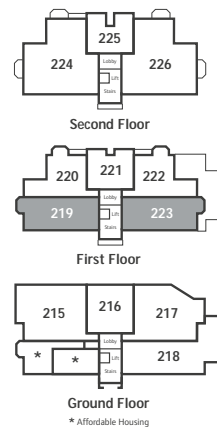
3.94 x 3.25m 12'11" x 10'7"

Cpd = Cupboard

BC = Boiler cupboard

AC = Airing cupboard

W = Space for wardrobe



* Home 219 is handed.

* Affordable Housing

Wilshere Park

Welwyn AL6 9GJ

1, 2 & 3 bedroom apartments and 4 & 5 bedroom houses

01707 861 347

Please note, floor plans and dimensions are taken from architectural drawings and are for guidance only. Dimensions stated are within a tolerance of plus or minus 50mm. Overall dimensions are usually stated and there may be projections into these. With our continual improvement policy we constantly review our designs and specification to ensure we deliver the best product to our customers. Computer generated images not to scale. Finishes and materials may vary and landscaping is illustrative only. Kitchen layouts are indicative only and may change. To confirm specific details on our homes please ask your Sales Executive. September 2018.



Wilshere Park
Welwyn

Brunswick House
2 bedroom home



Rear elevation.

Homes 220* & 222



First Floor Homes 220 & 222

Living/Dining Room/Kitchen	
5.66 x 4.88m	18'6" x 16'0"
Bedroom 1	
4.71 x 3.32m	15'5" x 10'10"
Bedroom 2	
4.02 x 3.13m	13'2" x 10'3"

Cpd = Cupboard
AC = Airing cupboard
W = Space for wardrobe

* Home 220 is handed.

Wilshere Park
Welwyn AL6 9GJ
1, 2 & 3 bedroom apartments and 4 & 5 bedroom houses
01707 861 347

Please note, floor plans and dimensions are taken from architectural drawings and are for guidance only. Dimensions stated are within a tolerance of plus or minus 50mm. Overall dimensions are usually stated and there may be projections into these. With our continual improvement policy we constantly review our designs and specification to ensure we deliver the best product to our customers. Computer generated images not to scale. Finishes and materials may vary and landscaping is illustrative only. Kitchen layouts are indicative only and may change. To confirm specific details on our homes please ask your Sales Executive. September 2018.



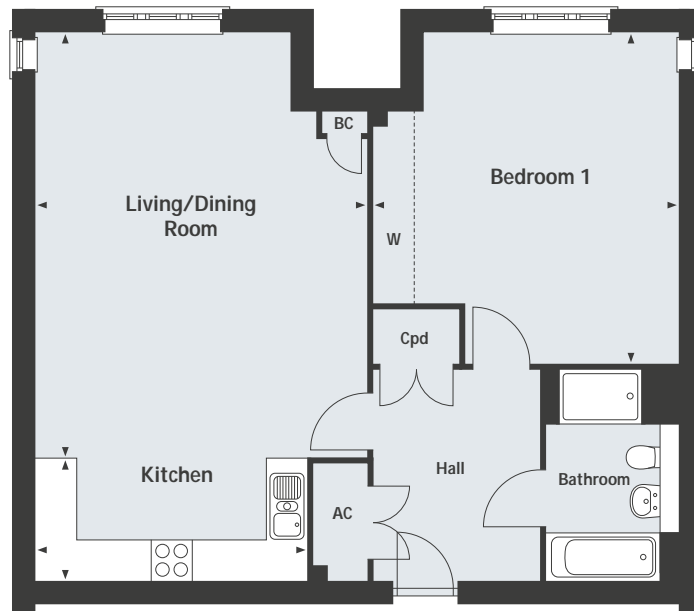
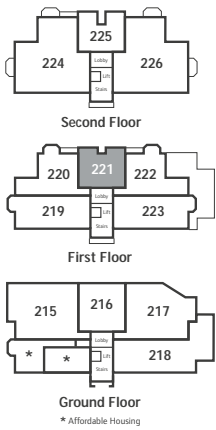
—
Wilshere Park
Welwyn
—

Brunswick House
2 bedroom home



Rear elevation.

Home 221



First Floor Home 221

Living/Dining Room

6.24 x 4.88m

20'5" x 16'0"

Kitchen

4.00 x 1.80m

13'1" x 5'10"

Bedroom 1

4.86 x 4.48m

15'11" x 14'8"

Cpd = Cupboard

BC = Boiler cupboard

AC = Airing cupboard

W = Space for wardrobe

Wilshere Park

Welwyn AL6 9GJ

1, 2 & 3 bedroom apartments and 4 & 5 bedroom houses

01707 861 347

Please note, floor plans and dimensions are taken from architectural drawings and are for guidance only. Dimensions stated are within a tolerance of plus or minus 50mm. Overall dimensions are usually stated and there may be projections into these. With our continual improvement policy we constantly review our designs and specification to ensure we deliver the best product to our customers. Computer generated images not to scale. Finishes and materials may vary and landscaping is illustrative only. Kitchen layouts are indicative only and may change. To confirm specific details on our homes please ask your Sales Executive. September 2018.


Linden
HOMES

Wilshere Park
Welwyn

Brunswick House
2 bedroom home



Rear elevation.

Homes 224* & 226



Second Floor Homes 224 & 226

Living/Dining Room/Kitchen	9.84 x 5.02m	32'3" x 16'5"
Bedroom 1	4.90 x 3.80m	16'1" x 12'5"
Bedroom 2	4.21 x 3.72m	13'9" x 12'2"

* Home 224 is handed.

Cpd = Cupboard

AC = Airing cupboard

W = Space for wardrobe

---- = Reduced ceiling height.

Please speak to Sales Executive for further details.

Wilshere Park

Welwyn AL6 9GJ

1, 2 & 3 bedroom apartments and 4 & 5 bedroom houses

01707 861 347

Please note, floor plans and dimensions are taken from architectural drawings and are for guidance only. Dimensions stated are within a tolerance of plus or minus 50mm. Overall dimensions are usually stated and there may be projections into these. With our continual improvement policy we constantly review our designs and specification to ensure we deliver the best product to our customers. Computer generated images not to scale. Finishes and materials may vary and landscaping is illustrative only. Kitchen layouts are indicative only and may change. To confirm specific details on our homes please ask your Sales Executive. September 2018.



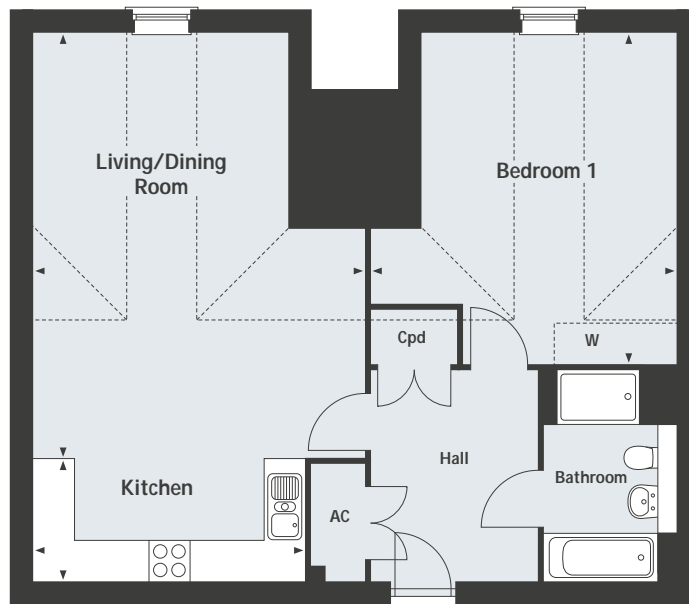
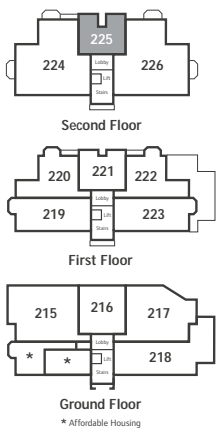
—
Wilshere Park
 Welwyn

Brunswick House
 1 bedroom home



Rear elevation.

Home 225



Second Floor Home 225

Living/Dining Room	6.24 x 4.88m	20'5" x 16'0"
Kitchen	4.00 x 1.80m	13'1" x 5'10"
Bedroom 1	4.86 x 4.48m	15'11" x 14'8"

Cpd = Cupboard

AC = Airing cupboard

W = Space for wardrobe

---- = Reduced ceiling height.

Please speak to Sales Executive for further details.

Wilshere Park

Welwyn AL6 9GJ

1, 2 & 3 bedroom apartments and 4 & 5 bedroom houses

01707 861 347

Please note, floor plans and dimensions are taken from architectural drawings and are for guidance only. Dimensions stated are within a tolerance of plus or minus 50mm. Overall dimensions are usually stated and there may be projections into these. With our continual improvement policy we constantly review our designs and specification to ensure we deliver the best product to our customers. Computer generated images not to scale. Finishes and materials may vary and landscaping is illustrative only. Kitchen layouts are indicative only and may change. To confirm specific details on our homes please ask your Sales Executive. September 2018.

