

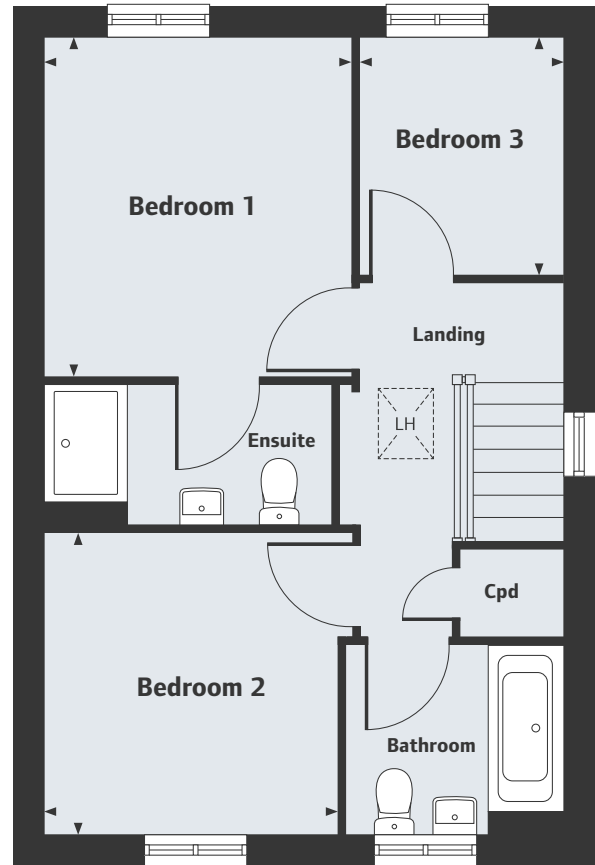
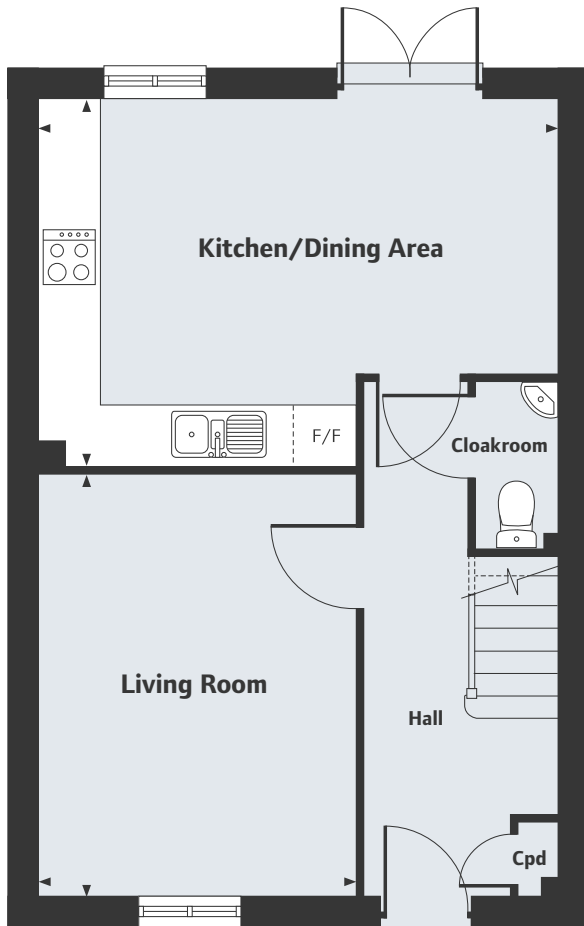
Trelawny Parc

Pelynt

The Harrison

3 bedroom home

Preliminary
Drawings



Ground Floor

Living Room	4.25m x 3.19m	13'11" x 10'6"
Kitchen/Dining Area	5.25m x 3.68m	17'3" x 12'1"

First Floor

Bedroom 1	3.44m x 3.10m	11'3" x 10'2"
Bedroom 2	2.99m x 2.98m	9'9" x 9'8"
Bedroom 3	2.44m x 2.04m	8'0" x 6'8"

F/F Space for fridge freezer

LH Loft hatch

Home 22 is handed.

For all sales enquiries please call
01503 497 659
lindenhomes.co.uk/trelawnyparc

Please note, floorplans and dimensions are taken from architectural drawings and are for guidance only. Dimensions stated are within a tolerance of plus or minus 50mm. Overall dimensions are usually stated and there may be projections into these. With our continual improvement policy we constantly review our designs and specification to ensure we deliver the best product to our customers. Computer generated images not to scale. Finishes, materials Levels, external works & boundary treatments, Canopy detail, Elevation materials (render & brick used), Roof material and Door detail, shape and size vary. Landscaping is illustrative only. Kitchen layouts are indicative only and may change. To confirm specific details on our homes please ask your Sales Executive. XGSW317/January 2019.


Linden
HOMES