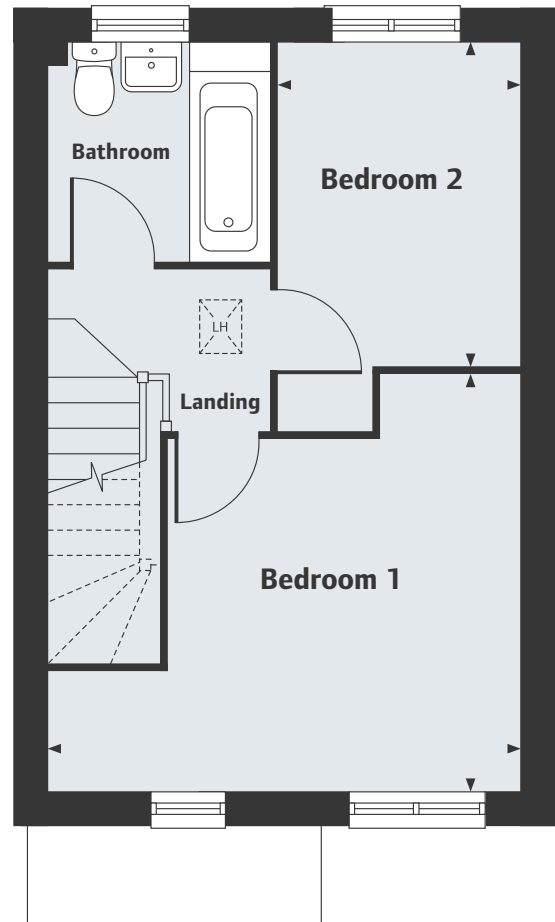
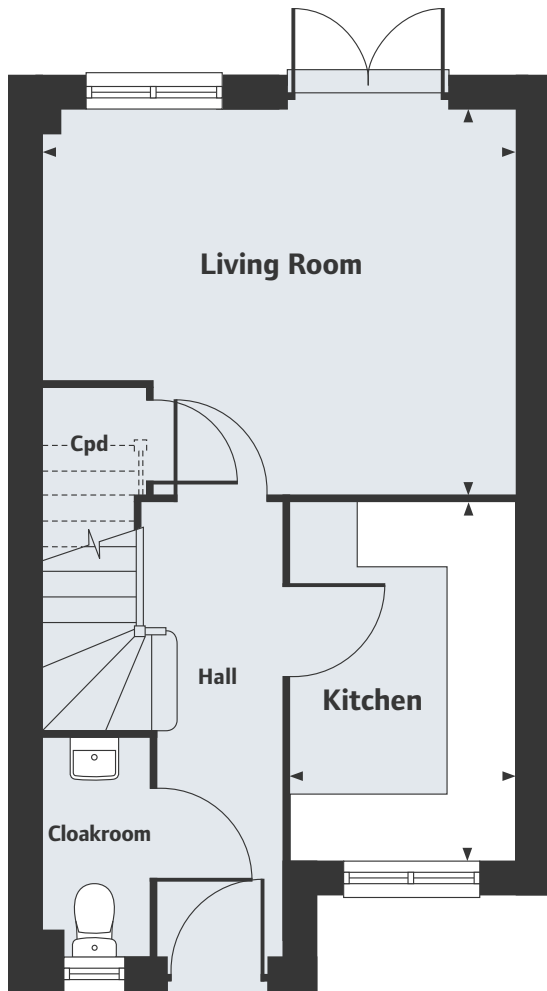


The Riddings

Riddings

The Oxcroft I

2 bedroom home



Ground Floor

Living Room	4.31m x 3.47m	14'2" x 11'5"
Kitchen	3.26m x 2.04m	10'8" x 6'8"

First Floor

Bedroom 1	4.31m x 3.79m	14'2" x 12'5"
Bedroom 2	2.94m x 2.21m	9'8" x 7'3"

LH Loft hatch

As drawn; 29, 59, 61, 80 & 82. Opposite; 28, 58, 60, 79 & 81.

For all sales enquiries please call

01773 730 903

lindenhomes.co.uk/riddings

Please note, floorplans and dimensions are taken from architectural drawings and are for guidance only. Dimensions stated are within a tolerance of plus or minus 50mm. Overall dimensions are usually stated and there may be projections into these. With our continual improvement policy we constantly review our designs and specification to ensure we deliver the best product to our customers. Computer generated images not to scale. Finishes and materials may vary and landscaping is illustrative only. Kitchen layouts are indicative only and may change. To confirm specific details on our homes please ask your Sales Executive. GALLEM30/January 2019.