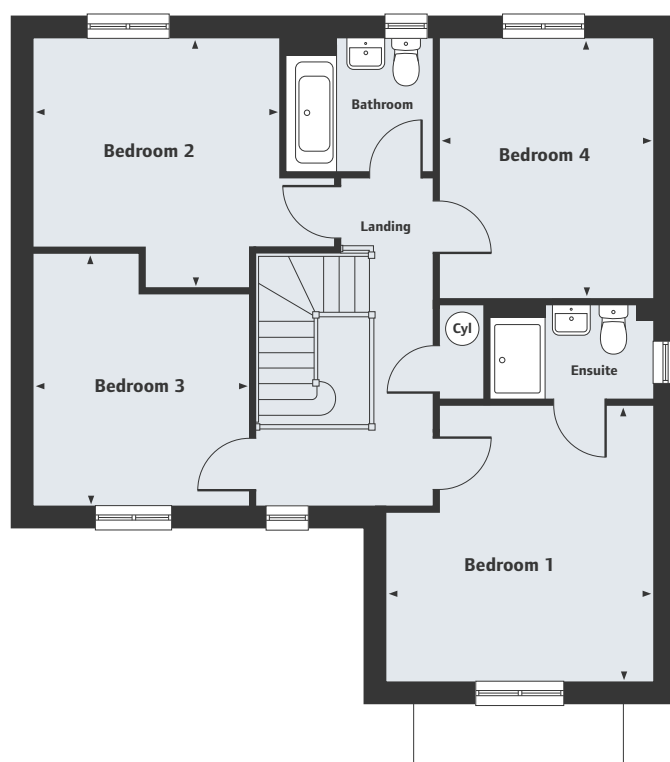


Hastings Gardens

Blunham

The Grainger

4 bedroom home



Ground Floor

Living Room*	4.39m x 3.90m	14'4" x 12'9"
Kitchen/Dining Area*	5.81m x 3.62m	19'0" x 11'10"

First Floor

Bedroom 1*	4.03m x 3.90m	13'2" x 12'9"
Bedroom 2*	3.82m x 3.70m	12'6" x 12'2"
Bedroom 3*	3.65m x 3.42m	11'11" x 11'2"
Bedroom 4	3.80m x 3.12m	12'5" x 10'3"

*Denotes irregular room shape.

For all sales enquiries please call
01767 777 104
lindenhomes.co.uk/hastingsgardens

Please note, floorplans and dimensions are taken from architectural drawings and are for guidance only. Dimensions stated are within a tolerance of plus or minus 50mm. Overall dimensions are usually stated and there may be projections into these. With our continual improvement policy we constantly review our designs and specification to ensure we deliver the best product to our customers. Computer generated images not to scale. Finishes and materials may vary and landscaping is illustrative only. Kitchen layouts are indicative only and may change. To confirm specific details on our homes please ask your Sales Executive.
 XLMID911/October 2018.

