



The Newton

2 bedroom home

One Lockleaze

Romney Avenue, Bristol, BS16 1EN | 0117 205 2337

[lindenhomes.co.uk](https://www.lindenhomes.co.uk)

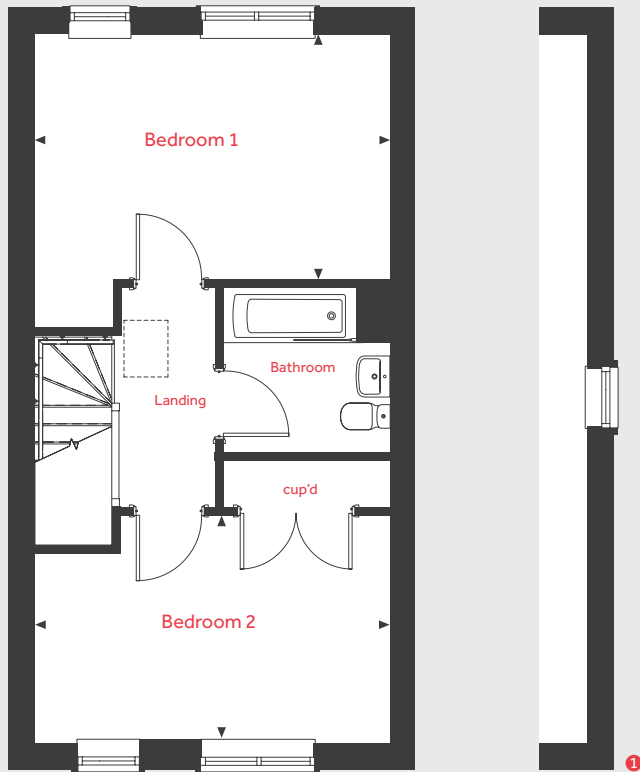
Linden
HOMES

The Newton

2 bedroom home

Homes 13, 14, 15, 16, 56, 57, 115, 116, 117, 118, 119, 120, 124, 125, 126, 128 & 129

First Floor



Ground Floor

Kitchen / Living / Dining area

9.09m x 3.45m 29'10" x 11'4"

First Floor

Bedroom 1

4.51m x 3.14m 14'10" x 10'4"

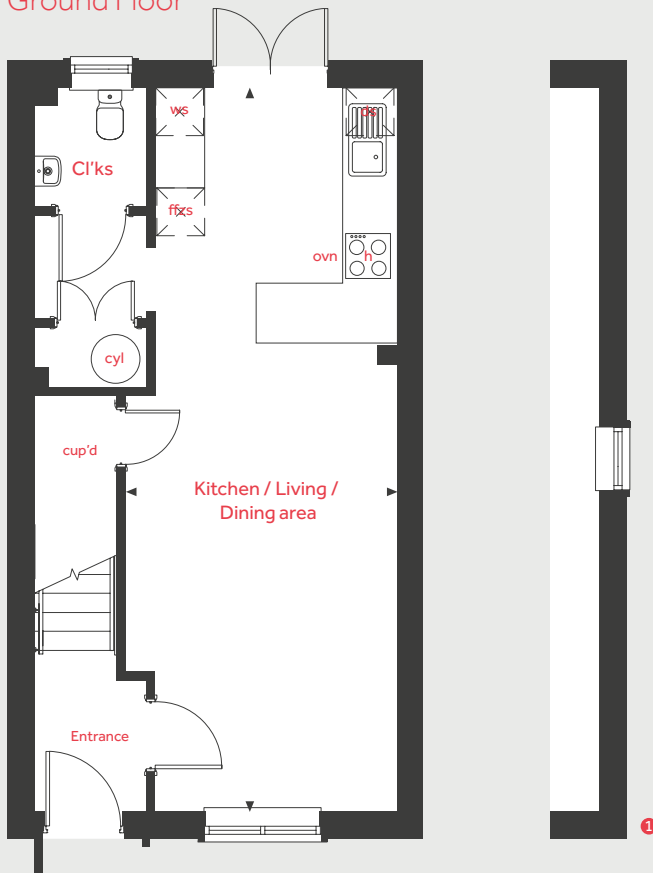
Bedroom 2

4.51m x 2.92m 14'10" x 9'7"

ovn	oven	cyl	hot water cylinder
h	hob	loft hatch	
ds	dishwasher space	cup'd	cupboard
ws	washing machine space	< >	measuring points
ffzs	fridge freezer space		

1 Alternative layout with gable windows applies to plots 13, 126, 128 and 129

Ground Floor



The illustrations shown are computer generated impressions of how the property may look and are indicative only. External details or finishes may vary on individual plots and homes may be built in either detached or attached styles depending on the development layout. Exact specifications, window styles and whether a property is left or righthanded may differ from plot to plot. Please speak to our sales consultant for specific plot details.

The floorplan has been produced for illustrative purposes only. Room sizes shown are between arrow points as indicated on plan. The dimensions have tolerances of + or -50mm and should not be used other than for general guidance. If specific dimensions are required, enquiries should be made to the sales consultant. The floor plans shown are not to scale. Measurements are based on the original drawings. Slight variations may occur during construction.

10.23

Linden
HOMES



The Newton II

2 bedroom home

One Lockleaze

Romney Avenue, Bristol, BS16 1EN | 0117 205 2337

lindenhomes.co.uk

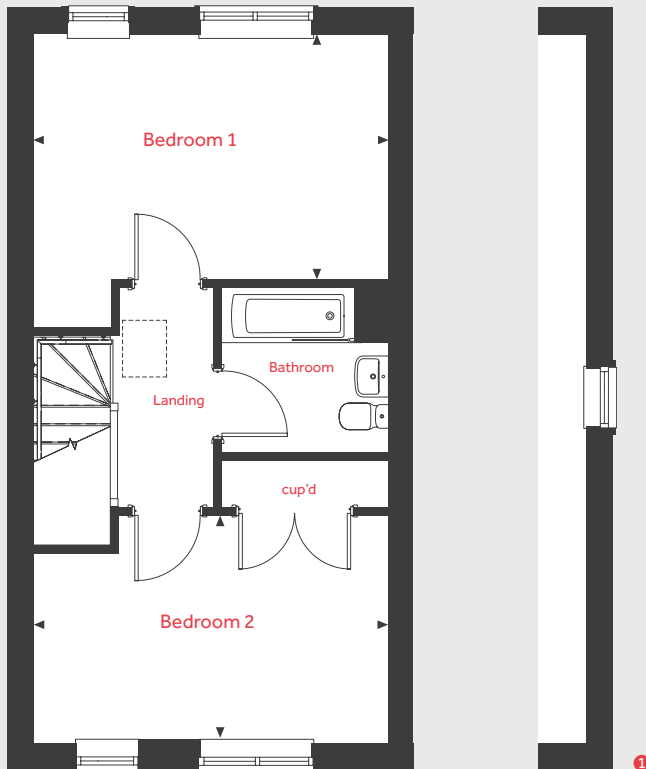
Linden
HOMES

The Newton II

2 bedroom home

Homes 7, 8, 130 & 131

First Floor



Ground Floor

Kitchen / Living / Dining area

9.09m x 3.45m 29'10" x 11'4"

First Floor

Bedroom 1

4.51m x 3.14m 14'10" x 10'4"

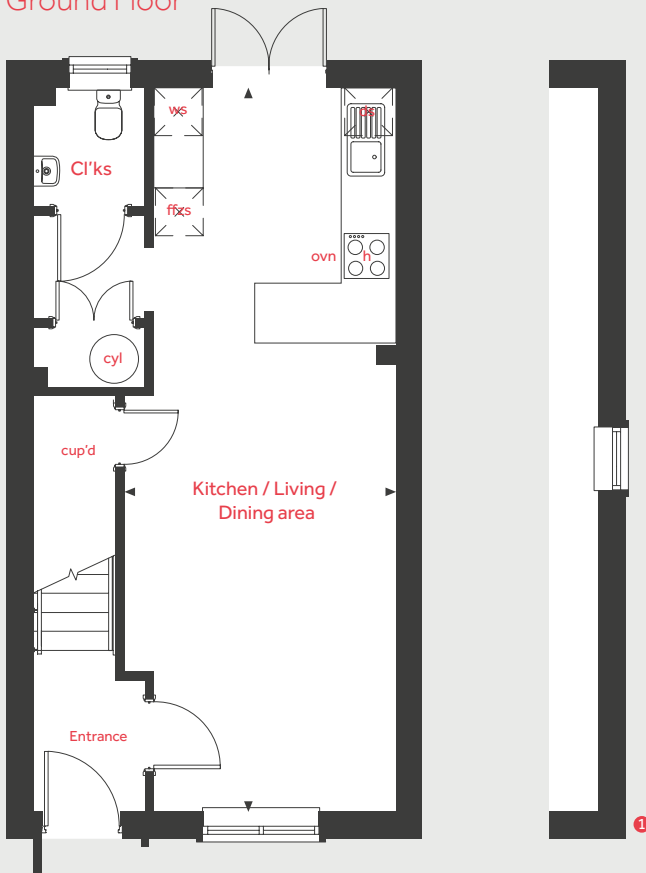
Bedroom 2

4.51m x 2.92m 14'10" x 9'7"

ovn	oven	cyl	hot water cylinder
h	hob	loft hatch	
ds	dishwasher space	cup'd	cupboard
ws	washing machine space	< >	measuring points
ffzs	fridge freezer space		

1 Alternative layout with gable windows applies to plots 130 and 131

Ground Floor



The illustrations shown are computer generated impressions of how the property may look and are indicative only. External details or finishes may vary on individual plots and homes may be built in either detached or attached styles depending on the development layout. Exact specifications, window styles and whether a property is left or righthanded may differ from plot to plot. Please speak to our sales consultant for specific plot details.

The floorplan has been produced for illustrative purposes only. Room sizes shown are between arrow points as indicated on plan. The dimensions have tolerances of + or - 50mm and should not be used other than for general guidance. If specific dimensions are required, enquiries should be made to the sales consultant. The floor plans shown are not to scale. Measurements are based on the original drawings. Slight variations may occur during construction.

10.23

Linden
HOMES



The Newton III

2 bedroom home

One Lockleaze

Romney Avenue, Bristol, BS16 1EN | 0117 205 2337

lindenhomes.co.uk

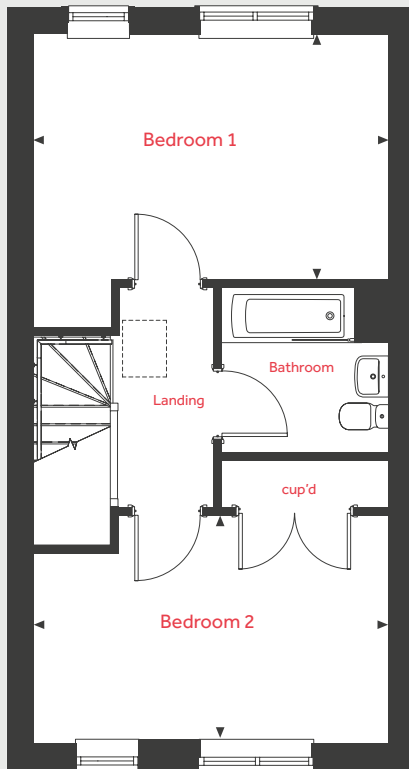
Linden
HOMES

The Newton III

2 bedroom home

Home 46, 47, 48 & 49

First Floor



Ground Floor

Kitchen / Living / Dining area

9.09m x 3.45m 29'10" x 11'4"

First Floor

Bedroom 1

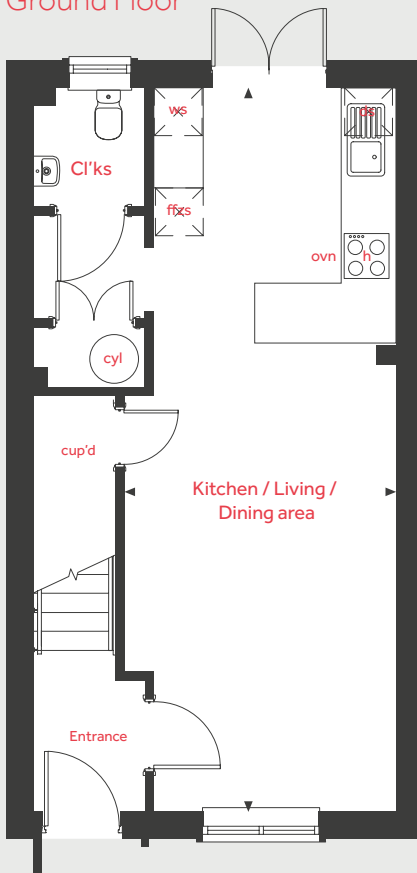
4.51m x 3.14m 14'10" x 10'4"

Bedroom 2

4.51m x 2.92m 14'10" x 9'7"

ovn	oven	cyl	hot water cylinder
h	hob	loft hatch	loft hatch
ds	dishwasher space	cup'd	cupboard
ws	washing machine space	< >	measuring points
ffzs	fridge freezer space		

Ground Floor



The illustrations shown are computer generated impressions of how the property may look and are indicative only. External details or finishes may vary on individual plots and homes may be built in either detached or attached styles depending on the development layout. Exact specifications, window styles and whether a property is left or righthanded may differ from plot to plot. Please speak to our sales consultant for specific plot details.

The floorplan has been produced for illustrative purposes only. Room sizes shown are between arrow points as indicated on plan. The dimensions have tolerances of + or - 50mm and should not be used other than for general guidance. If specific dimensions are required, enquiries should be made to the sales consultant. The floor plans shown are not to scale. Measurements are based on the original drawings. Slight variations may occur during construction.

10.23

Linden
HOMES



The Wellow

2 bedroom home

One Lockleaze

Romney Avenue, Bristol, BS16 1EN | 0117 205 2337

lindenhomes.co.uk

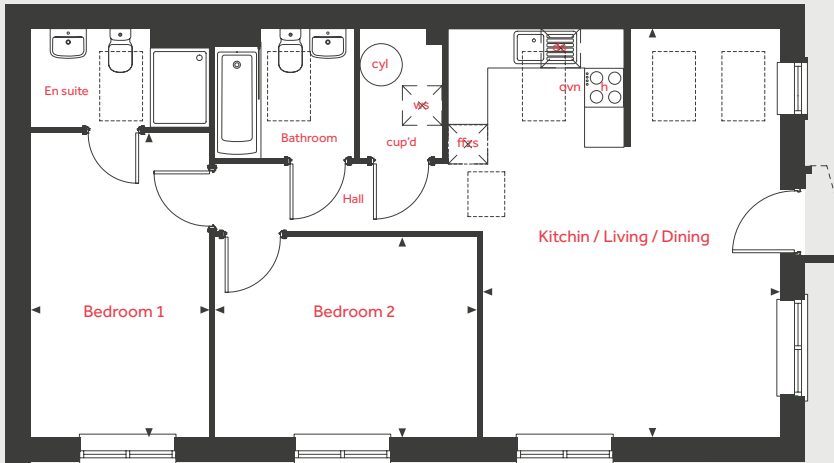
Linden
HOMES

The Wellow

2 bedroom home

Homes 65 & 66

First Floor



First Floor

Kitchen / Living / Dining

6.20m x 4.51m 20'4" x 14'10"

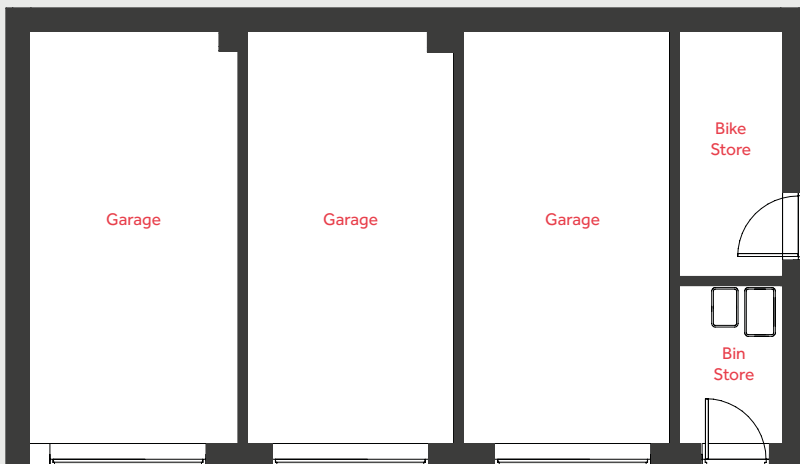
Bedroom 1

4.62m x 2.75m 15'2" x 9'0"

Bedroom 2

3.97m x 3.03m 13'0" x 9'11"

Ground Floor



ovn	oven	cyl	hot water cylinder
h	hob	loft hatch	loft hatch
ds	dishwasher space	cup'd	cupboard
ws	washing machine space	measuring points	measuring points
ffzs	fridge freezer space	roof lights	roof lights

The illustrations shown are computer generated impressions of how the property may look and are indicative only. External details or finishes may vary on individual plots and homes may be built in either detached or attached styles depending on the development layout. Exact specifications, window styles and whether a property is left or righthanded may differ from plot to plot. Please speak to our sales consultant for specific plot details.

The floorplan has been produced for illustrative purposes only. Room sizes shown are between arrow points as indicated on plan. The dimensions have tolerances of + or -50mm and should not be used other than for general guidance. If specific dimensions are required, enquiries should be made to the sales consultant. The floor plans shown are not to scale. Measurements are based on the original drawings. Slight variations may occur during construction.

10.23

Linden
HOMES



The Marden

3 bedroom home

One Lockleaze

Romney Avenue, Bristol, BS16 1EN | 0117 205 2337

lindenhomes.co.uk

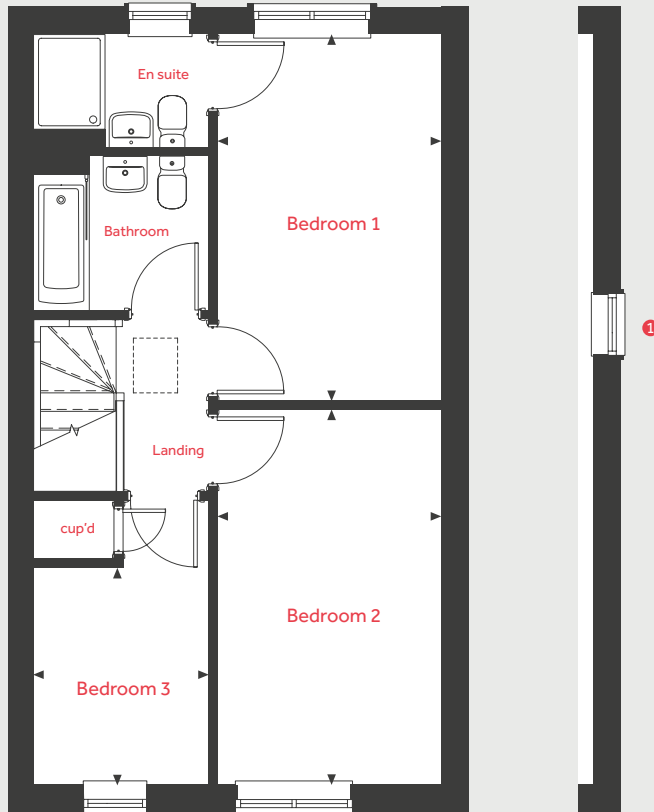
Linden
HOMES

The Marden

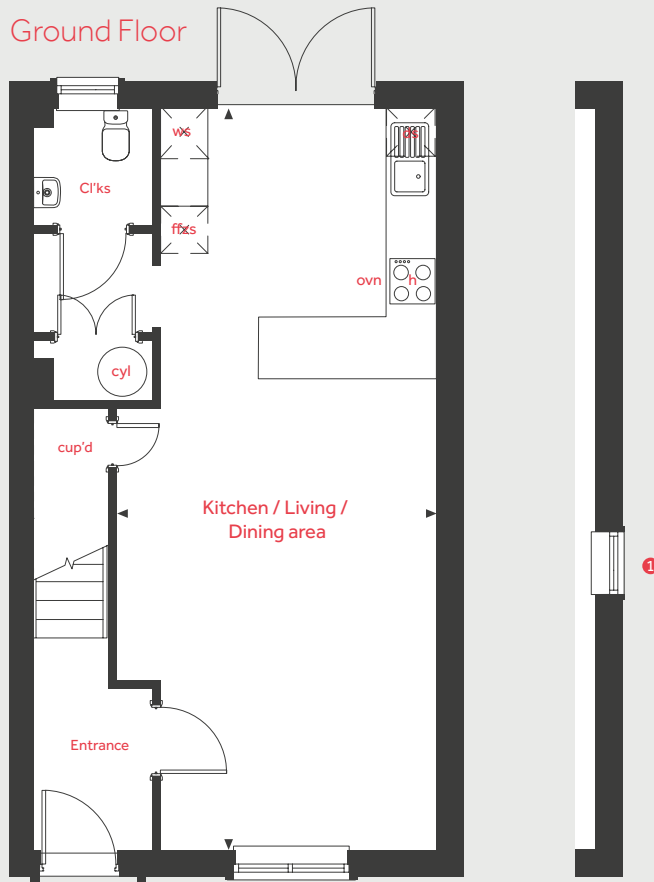
3 bedroom home

Homes 3, 4, 11, 12, 94, 95, 96, 97, 132, 133, 136, 137, 140, 141, 142 & 143

First Floor



Ground Floor



Ground Floor

Kitchen / Living / Dining area

9.43m x 4.01m 30'11" x 13'2"

First Floor

Bedroom 1

4.60m x 2.77m 15'1" x 9'1"

Bedroom 2

4.71m x 2.77m 15'5" x 9'1"

Bedroom 3

2.72m x 2.15m 8'11" x 7'1"

ovn	oven	cyl	hot water cylinder
h	hob	loft hatch	
ds	dishwasher space	cup'd	cupboard
ws	washing machine space	< >	measuring points
ffzr	fridge freezer space		

1 Gable windows only on plots 12, 94, 95, 132, 133, 136, 137, 140, 141, 142, 143

The illustrations shown are computer generated impressions of how the property may look and are indicative only. External details or finishes may vary on individual plots and homes may be built in either detached or attached styles depending on the development layout. Exact specifications, window styles and whether a property is left or righthanded may differ from plot to plot. Please speak to our sales consultant for specific plot details.

The floorplan has been produced for illustrative purposes only. Room sizes shown are between arrow points as indicated on plan. The dimensions have tolerances of + or -50mm and should not be used other than for general guidance. If specific dimensions are required, enquiries should be made to the sales consultant. The floor plans shown are not to scale. Measurements are based on the original drawings. Slight variations may occur during construction.

10.23

Linden
HOMES



The Marden II

3 bedroom home

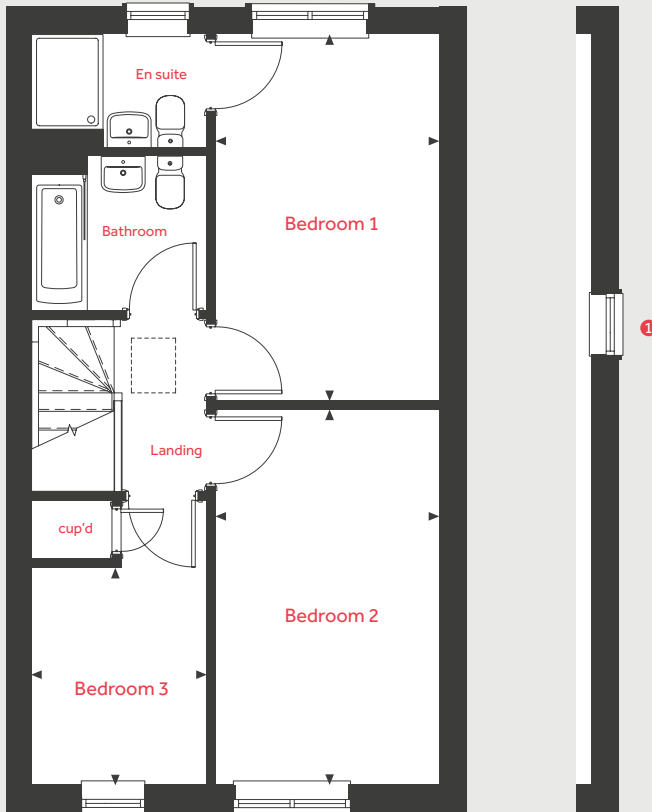
One Lockleaze

Romney Avenue, Bristol, BS16 1EN | 0117 205 2337

lindenhomes.co.uk

Linden
HOMES

First Floor



The Marden II

3 bedroom home

Homes 45 & 50

Ground Floor

Kitchen / Living / Dining area

9.43m x 4.01m 30'11" x 13'2"

First Floor

Bedroom 1

4.60m x 2.77m 15'1" x 9'1"

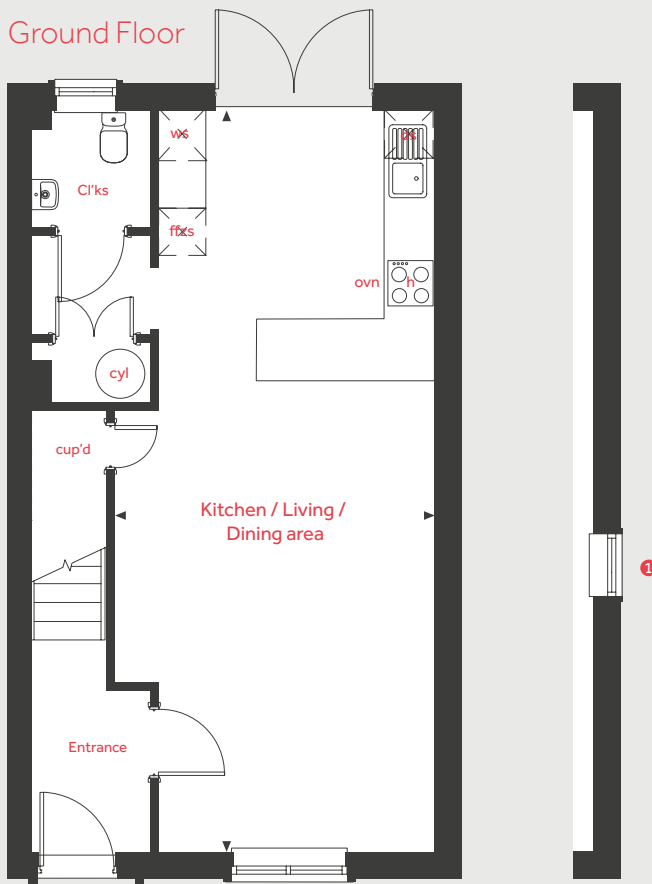
Bedroom 2

4.71m x 2.77m 15'5" x 9'1"

Bedroom 3

2.72m x 2.15m 8'11" x 7'1"

Ground Floor



ovn	oven	cyl	hot water cylinder
h	hob	loft hatch	
ds	dishwasher space	cup'd	cupboard
ws	washing machine space	< >	measuring points
ffzr	fridge freezer space		

1 Gable windows only plots 45 and 50

The illustrations shown are computer generated impressions of how the property may look and are indicative only. External details or finishes may vary on individual plots and homes may be built in either detached or attached styles depending on the development layout. Exact specifications, window styles and whether a property is left or righthanded may differ from plot to plot. Please speak to our sales consultant for specific plot details.

The floorplan has been produced for illustrative purposes only. Room sizes shown are between arrow points as indicated on plan. The dimensions have tolerances of + or - 50mm and should not be used other than for general guidance. If specific dimensions are required, enquiries should be made to the sales consultant. The floor plans shown are not to scale. Measurements are based on the original drawings. Slight variations may occur during construction.

10.23



The Brinkworth

3 bedroom home

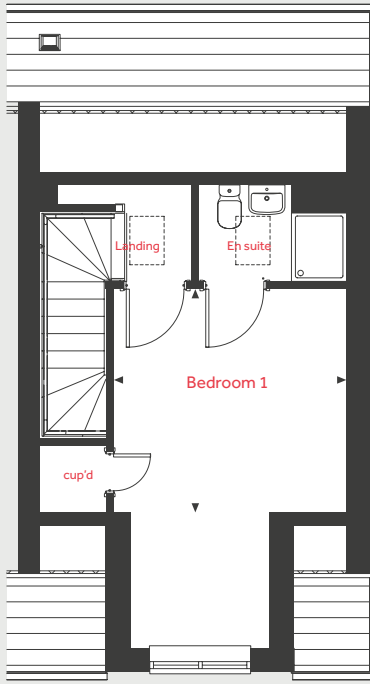
One Lockleaze

Romney Avenue, Bristol, BS16 1EN | 0117 205 2337

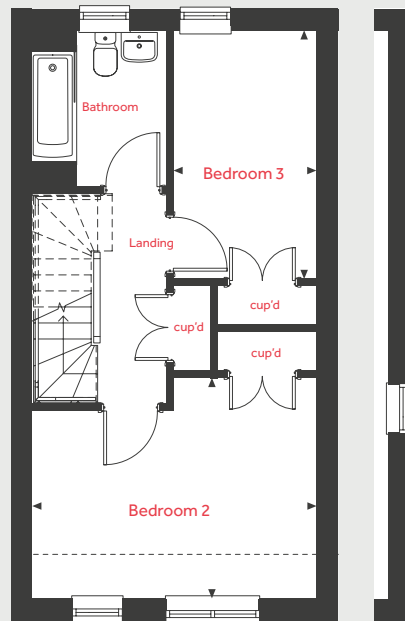
lindenhomes.co.uk

Linden
HOMES

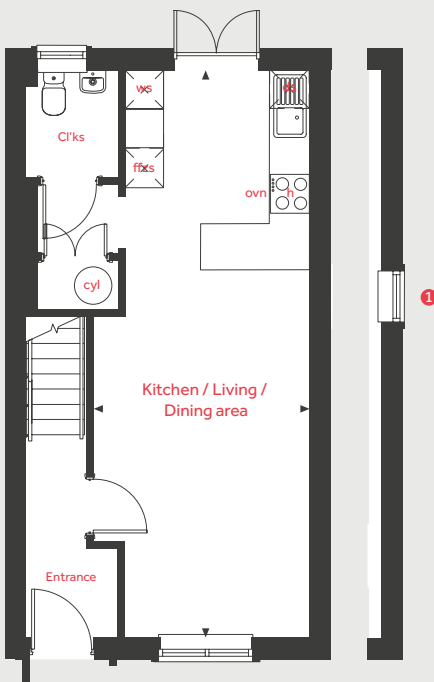
Second Floor



First Floor



Ground Floor



The Brinkworth

3 bedroom home

Homes 67, 68, 69, 70, 71, 72, 98, 99, 100, 101, 102, 103, 104, 105, 106, 144, 145, 146 & 147

Ground Floor

Kitchen / Living / Dining area

8.86m x 3.33m 29'1" x 10'11"

First Floor

Bedroom 2

4.40m x 3.44m 14'5" x 11'3"

Bedroom 3

3.87m x 2.19m 12'8" x 7'2"

Second Floor

Bedroom 1

3.33m x 3.24m 10'11" x 10'8"

ovn	oven	cyl	hot water cylinder
h	hob	loft hatch	loft hatch
ds	dishwasher space	cup'd	cupboard
ws	washing machine space	< >	measuring points
ffzs	fridge freezer space		

1 Alternative layout applies to plot 98

The illustrations shown are computer generated impressions of how the property may look and are indicative only. External details or finishes may vary on individual plots and homes may be built in either detached or attached styles depending on the development layout. Exact specifications, window styles and whether a property is left or righthanded may differ from plot to plot. Please speak to our sales consultant for specific plot details.

The floorplan has been produced for illustrative purposes only. Room sizes shown are between arrow points as indicated on plan. The dimensions have tolerances of + or -50mm and should not be used other than for general guidance. If specific dimensions are required, enquiries should be made to the sales consultant. The floor plans shown are not to scale. Measurements are based on the original drawings. Slight variations may occur during construction.

10.23

Linden
HOMES



The Woodbridge

4 bedroom home

One Lockleaze

Romney Avenue, Bristol, BS16 1EN | 0117 205 2337

[lindenhomes.co.uk](https://www.lindenhomes.co.uk)

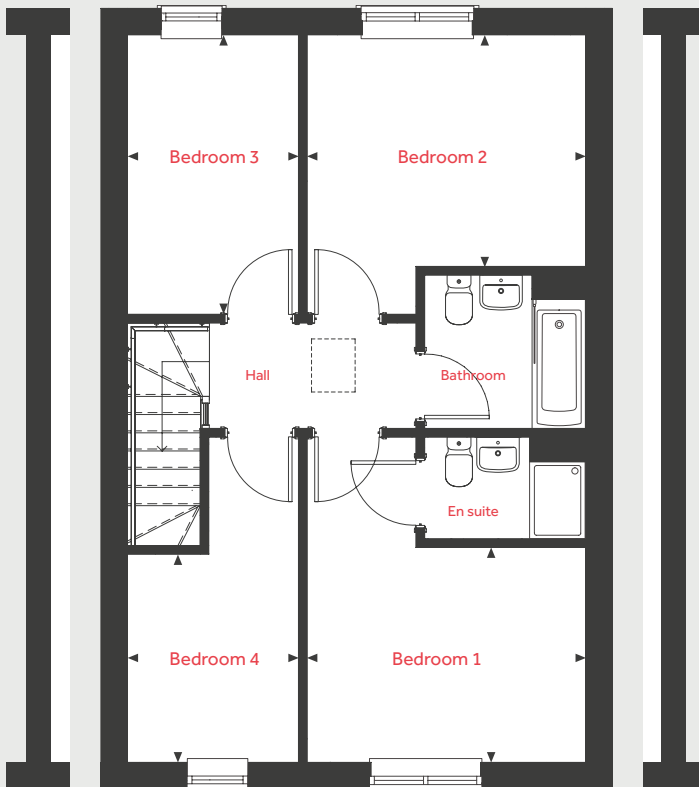
Linden
HOMES

The Woodbridge

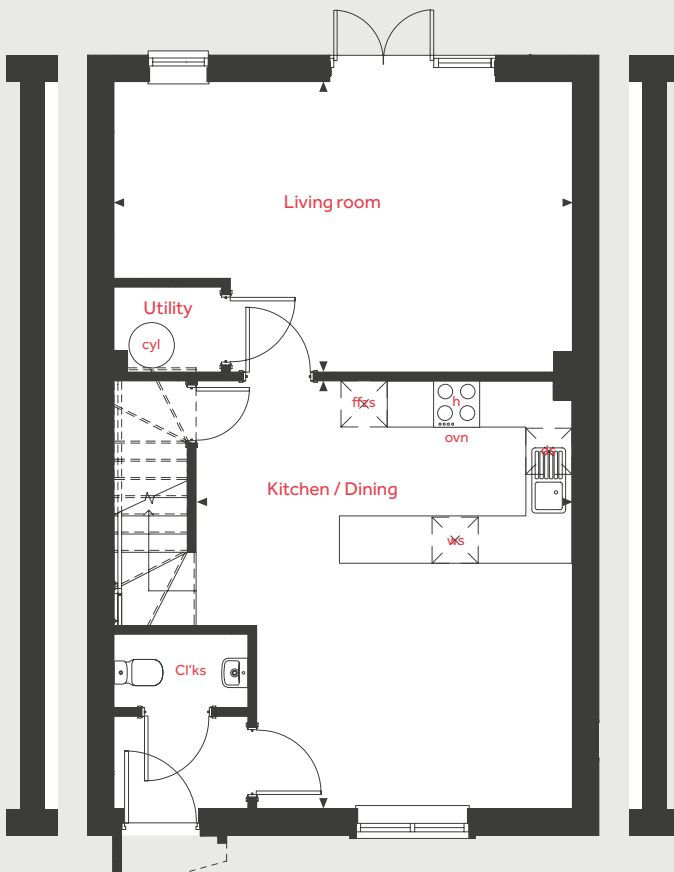
4 bedroom home

Homes 17, 18, 21 & 22

First Floor



Ground Floor



Ground Floor

Kitchen / Dining area

5.55m x 4.85m 18'3" x 15'11"

Living room

5.87m x 3.77m 19'3" x 12'4"

First Floor

Bedroom 1

3.57m x 2.79m 11'9" x 9'2"

Bedroom 2

3.57m x 3.01m 11'9" x 9'11"

Bedroom 3

3.62m x 2.18m 11'11" x 7'2"

Bedroom 4

2.69m x 2.18m 8'10" x 7'2"

ovn	oven	cyl	hot water cylinder
h	hob	loft hatch	
ds	dishwasher space	cup'd	cupboard
ws	washing machine space	< >	measuring points
ffzs	fridge freezer space		

The illustrations shown are computer generated impressions of how the property may look and are indicative only. External details or finishes may vary on individual plots and homes may be built in either detached or attached styles depending on the development layout. Exact specifications, window styles and whether a property is left or righthanded may differ from plot to plot. Please speak to our sales consultant for specific plot details.

The floorplan has been produced for illustrative purposes only. Room sizes shown are between arrow points as indicated on plan. The dimensions have tolerances of + or - 50mm and should not be used other than for general guidance. If specific dimensions are required, enquiries should be made to the sales consultant. The floor plans shown are not to scale. Measurements are based on the original drawings. Slight variations may occur during construction.

10.23



The Siston

4 bedroom home

One Lockleaze

Romney Avenue, Bristol, BS16 1EN | 0117 205 2337

lindenhomes.co.uk

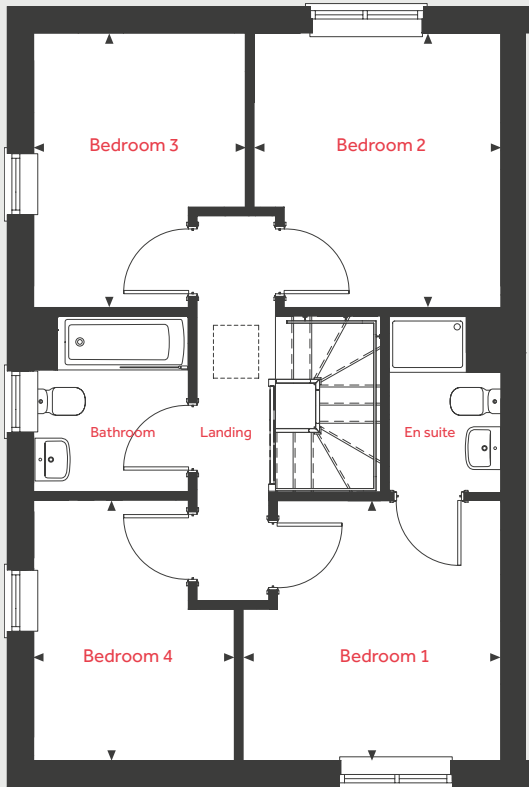
Linden
HOMES

The Siston

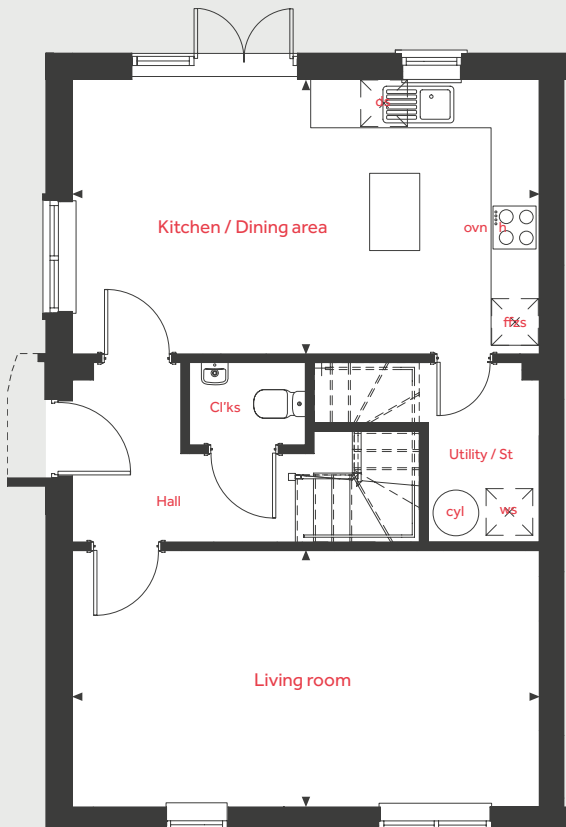
4 bedroom home

Homes 19 & 20

First Floor



Ground Floor



Ground Floor

Kitchen / Dining area

6.01m x 3.56m 19'9" x 11'8"

Living room

6.01m x 3.32m 19'9" x 10'11"

First Floor

Bedroom 1

3.37m x 3.30m 11'1" x 10'10"

Bedroom 2

3.55m x 3.16m 11'8" x 10'4"

Bedroom 3

3.55m x 2.70m 11'8" x 8'10"

Bedroom 4

3.37m x 2.56m 11'1" x 8'5"

ovn	oven	cyl	hot water cylinder
h	hob	loft hatch	
ds	dishwasher space	cup'd	cupboard
ws	washing machine space	< >	measuring points
ffzs	fridge freezer space		

The illustrations shown are computer generated impressions of how the property may look and are indicative only. External details or finishes may vary on individual plots and homes may be built in either detached or attached styles depending on the development layout. Exact specifications, window styles and whether a property is left or righthanded may differ from plot to plot. Please speak to our sales consultant for specific plot details.

The floorplan has been produced for illustrative purposes only. Room sizes shown are between arrow points as indicated on plan. The dimensions have tolerances of + or - 50mm and should not be used other than for general guidance. If specific dimensions are required, enquiries should be made to the sales consultant. The floor plans shown are not to scale. Measurements are based on the original drawings. Slight variations may occur during construction.

10.23