



The Foxglove

4 bedroom home

Plot 177

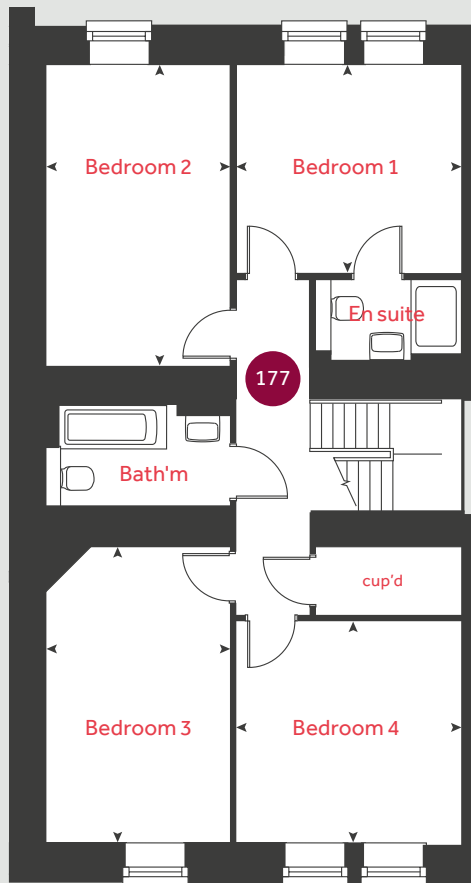
Blackberry Hill

Fishponds, Bristol BS16 2EW | 01173 211 240

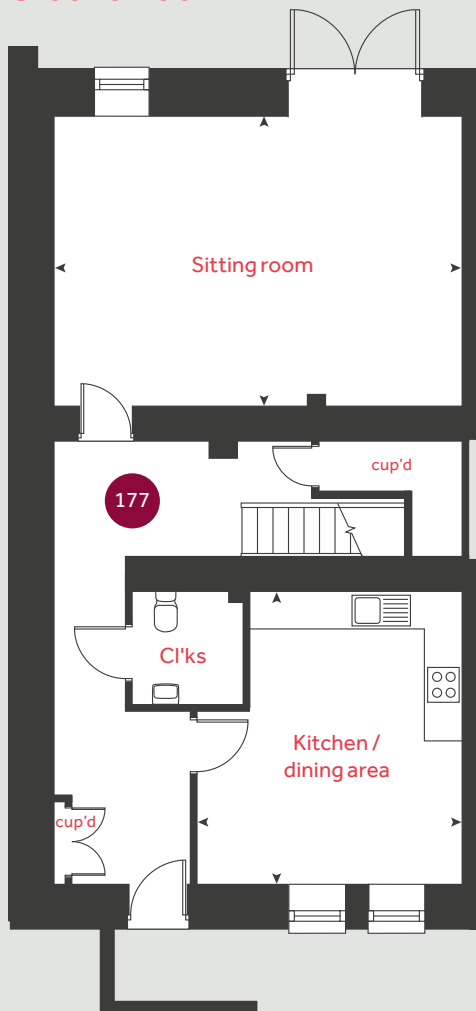
lindenhomes.co.uk

Linden
HOMES

First floor



Ground floor



The Foxglove

4 bedroom home

Home 177

Ground floor

Kitchen / dining area

4.71m x 4.25m 15' 11" x 13' 11"

Sitting room

6.58m x 4.67m 21' 7" x 15' 4"

First floor

Bedroom 1

3.61m x 3.38m 11' 11" x 11' 1"

Bedroom 2

4.85m x 2.96m 15' 10" x 9' 8"

Bedroom 3

4.77m x 2.98m 11' 10" x 11' 9"

Bedroom 4

3.60m x 2.51m 11' 10" x 11' 9"

cup'd

cupboard

◀ ▶

measuring points

Please note, floorplans and dimensions are taken from architectural drawings and are for guidance only. Dimensions stated are within a tolerance of plus or minus 50mm. Overall dimensions are usually stated and there may be projections into these. With our continual improvement policy we constantly review our designs and specification to ensure we deliver the best products to our customers. Computer generated images not to scale. Finishes and materials may vary and landscaping is illustrative only. Kitchen layouts are indicative only and may change. To confirm specific details on our homes please see our sales consultant.

Produced by Vistry Group Design Studio.

When you have finished with this leaflet please recycle it.

680 DS04932 / 02.23

Linden

HOMES



The Foxglove

4 bedroom home

Plot 178

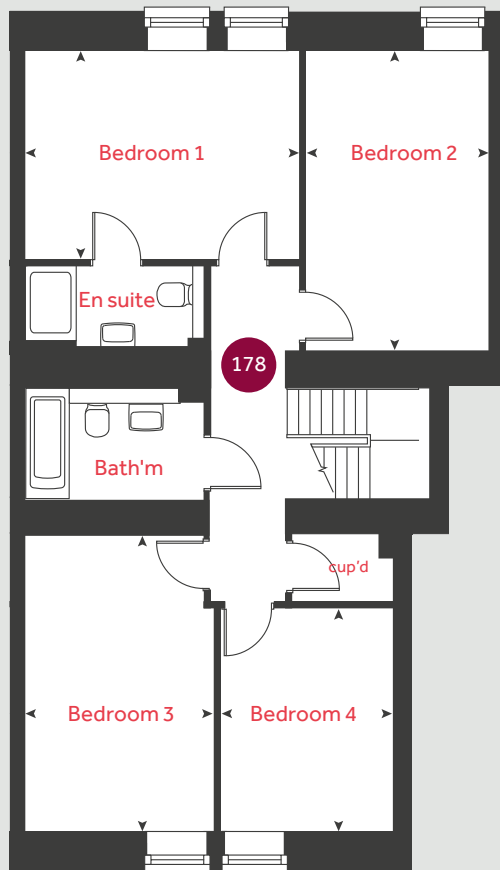
Blackberry Hill

Fishponds, Bristol BS16 2EW | 01173 211 240

lindenhomes.co.uk

Linden
HOMES

First floor



The Foxglove

4 bedroom home

Home 178

Ground floor

Kitchen / dining area

4.70m x 4.32m 15' 5" x 14' 2"

Sitting room

7.46m x 4.72m 24' 6" x 15' 6"

First floor

Bedroom 1

4.41m x 3.37m 14' 6" x 11' 1"

Bedroom 2

4.84m x 2.97m 15' 10" x 9' 9"

Bedroom 3

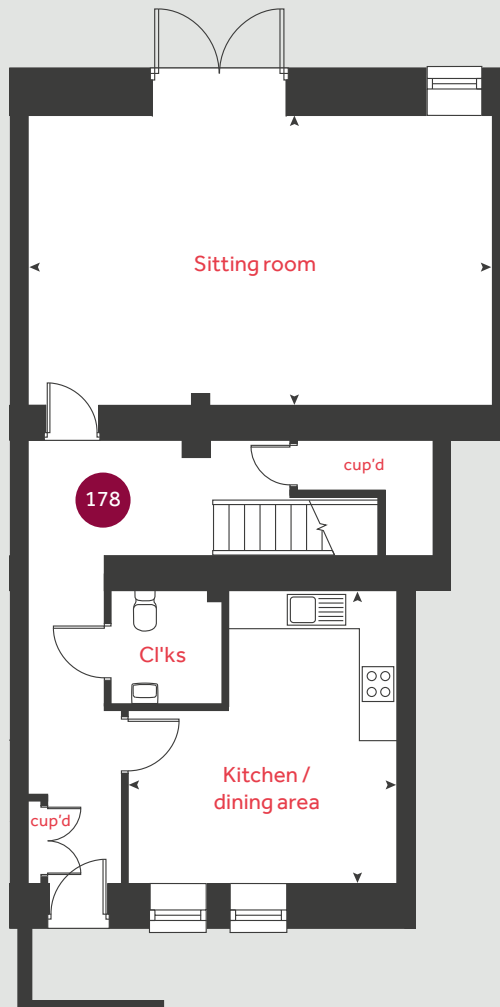
4.78m x 3.01m 15' 8" x 9' 10"

Bedroom 4

3.61m x 2.83m 11' 10" x 9' 3"

cup'd cupboard < > measuring points

Ground floor



Please note, floorplans and dimensions are taken from architectural drawings and are for guidance only. Dimensions stated are within a tolerance of plus or minus 50mm. Overall dimensions are usually stated and there may be projections into these. With our continual improvement policy we constantly review our designs and specification to ensure we deliver the best products to our customers. Computer generated images not to scale. Finishes and materials may vary and landscaping is illustrative only. Kitchen layouts are indicative only and may change. To confirm specific details on our homes please see our sales consultant.

Produced by Vistry Group Design Studio.

When you have finished with this leaflet please recycle it.

680 DS04932 / 02.23

Linden
HOMES



The Foxglove

4 bedroom home

Plot 179

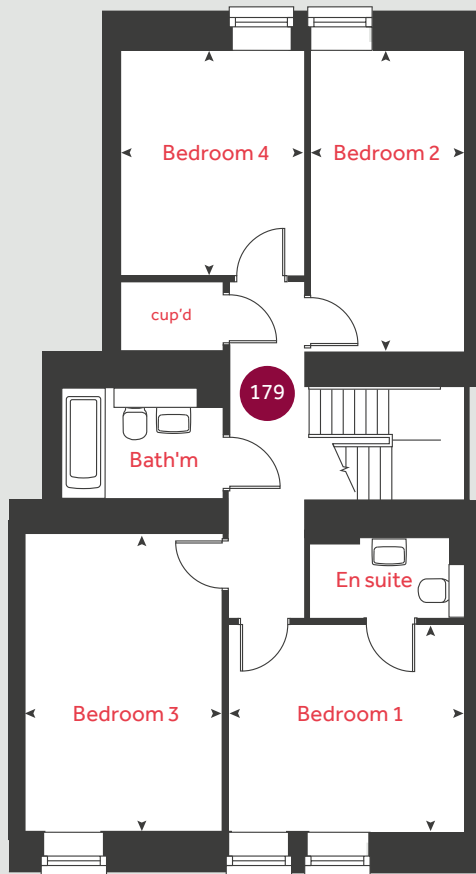
Blackberry Hill

Fishponds, Bristol BS16 2EW | 01173 211 240

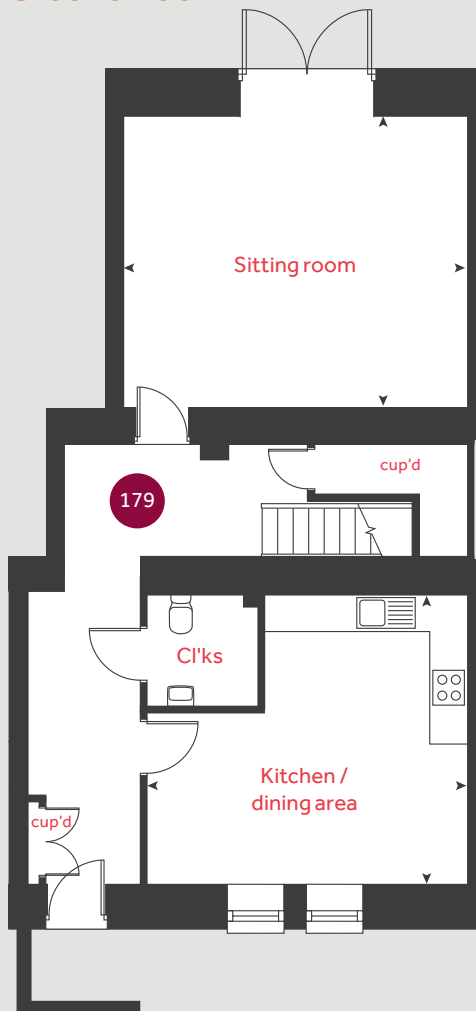
lindenhomes.co.uk

Linden
HOMES

First floor



Ground floor



The Foxglove

4 bedroom home

Home 179

Ground floor

Kitchen / dining area

5.17m x 4.66m 16' 11" x 15' 3"

Sitting room

5.54m x 4.73m 18' 2" x 15' 6"

First floor

Bedroom 1

3.82m x 3.34m 12' 6" x 10' 11"

Bedroom 2

4.85m x 2.49m 15' 11" x 8' 2"

Bedroom 3

4.79m x 3.16m 15' 8" x 10' 4"

Bedroom 4

3.63m x 2.94m 11' 11" x 9' 8"

cup'd

cupboard



measuring points

Please note, floorplans and dimensions are taken from architectural drawings and are for guidance only. Dimensions stated are within a tolerance of plus or minus 50mm. Overall dimensions are usually stated and there may be projections into these. With our continual improvement policy we constantly review our designs and specification to ensure we deliver the best products to our customers. Computer generated images not to scale. Finishes and materials may vary and landscaping is illustrative only. Kitchen layouts are indicative only and may change. To confirm specific details on our homes please see our sales consultant.

Produced by Vistry Group Design Studio.

When you have finished with this leaflet please recycle it.

680 DS04932 / 02.23

Linden

HOMES



The Foxglove

4 bedroom home

Plot 180

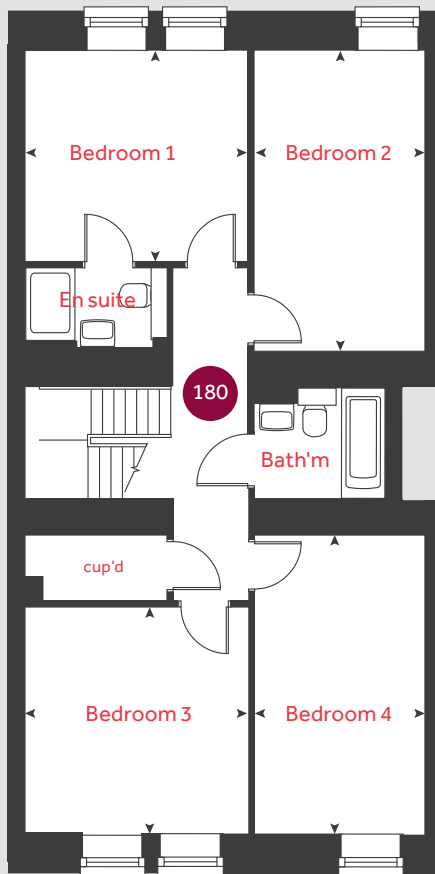
Blackberry Hill

Fishponds, Bristol BS16 2EW | 01173 211 240

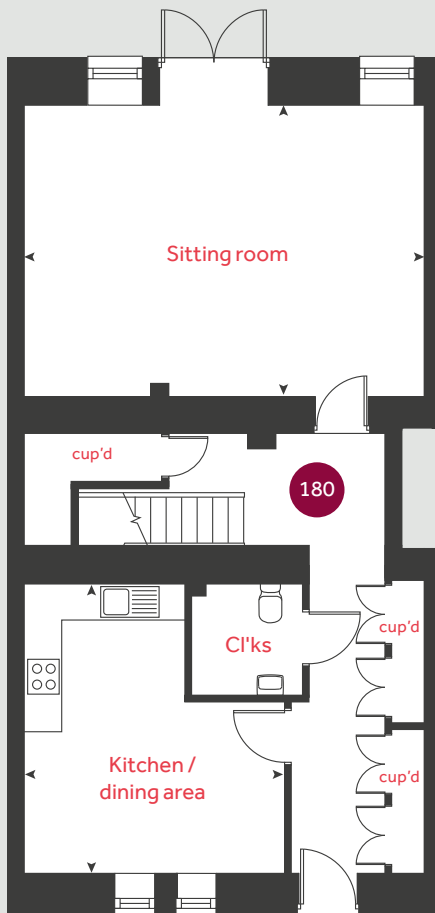
lindenhomes.co.uk

Linden
HOMES

First floor



Ground floor



The Foxglove

4 bedroom home

Home 180

Ground floor

Kitchen / dining area

4.66m x 4.20m 15' 3" x 13' 9"

Sitting room

6.45m x 4.74m 21' 2" x 15' 7"

First floor

Bedroom 1

3.57m x 3.40m 11' 9" x 11' 2"

Bedroom 2

4.82m x 2.77m 15' 10" x 9' 1"

Bedroom 3

3.64m x 3.57m 11' 11" x 11' 9"

Bedroom 4

4.84m x 2.78m 15' 11" x 9' 1"

cup'd cupboard < > measuring points

Please note, floorplans and dimensions are taken from architectural drawings and are for guidance only. Dimensions stated are within a tolerance of plus or minus 50mm. Overall dimensions are usually stated and there may be projections into these. With our continual improvement policy we constantly review our designs and specification to ensure we deliver the best products to our customers. Computer generated images not to scale. Finishes and materials may vary and landscaping is illustrative only. Kitchen layouts are indicative only and may change. To confirm specific details on our homes please see our sales consultant.

Produced by Vistry Group Design Studio.

When you have finished with this leaflet please recycle it.

680 DS04932 / 02.23

Linden
HOMES



The Foxglove

4 bedroom home

Plot 187

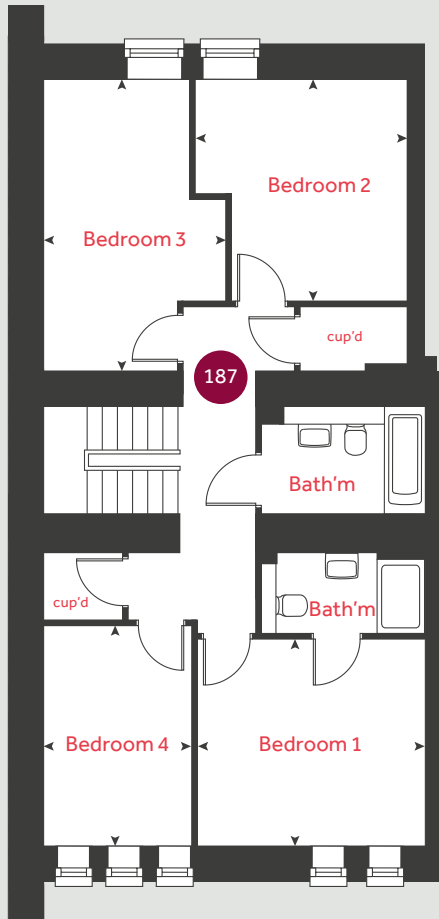
Blackberry Hill

Fishponds, Bristol BS16 2EW | 01173 211 240

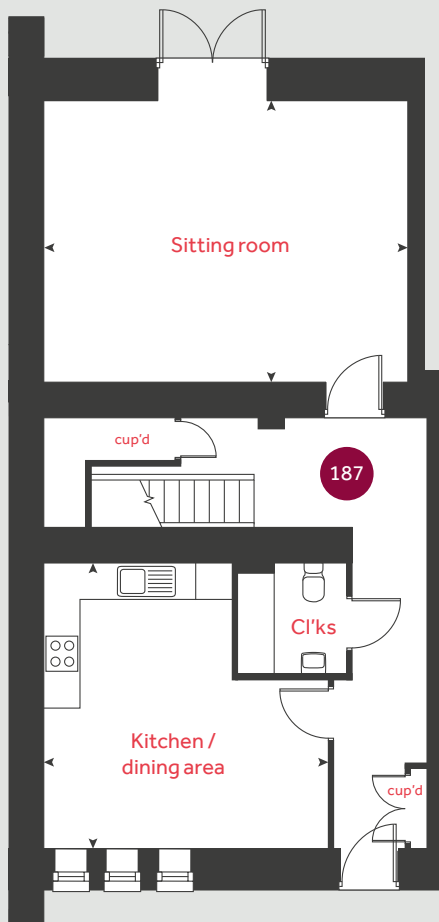
lindenhomes.co.uk

Linden
HOMES

First floor



Ground floor



The Foxglove

4 bedroom home

Home 187

Ground floor

Kitchen / dining area

4.74m x 4.71m 15' 6" x 15' 5"

Sitting room

5.99m x 4.65m 19' 8" x 15' 3"

First floor

Bedroom 1

3.77m x 3.35m 12' 4" x 11' 0"

Bedroom 2

3.59m x 3.51m 11' 9" x 11' 6"

Bedroom 3

4.68m x 2.97m 15' 4" x 9' 9"

Bedroom 4

3.77m x 3.35m 12' 4" x 11' 0"

cup'd

cupboard



measuring points

Please note, floorplans and dimensions are taken from architectural drawings and are for guidance only. Dimensions stated are within a tolerance of plus or minus 50mm. Overall dimensions are usually stated and there may be projections into these. With our continual improvement policy we constantly review our designs and specification to ensure we deliver the best products to our customers. Computer generated images not to scale. Finishes and materials may vary and landscaping is illustrative only. Kitchen layouts are indicative only and may change. To confirm specific details on our homes please see our sales consultant.

Produced by Vistry Group Design Studio.

When you have finished with this leaflet please recycle it.

680 DS04932 / 02.23

Linden

HOMES



The Foxglove

4 bedroom home

Plot 188

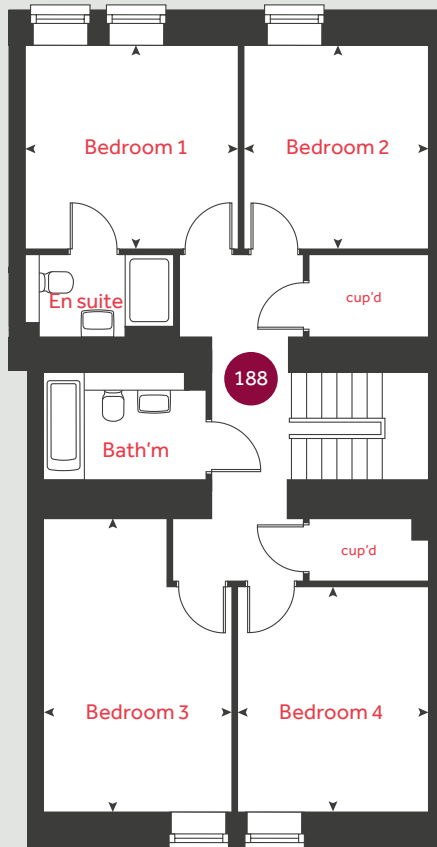
Blackberry Hill

Fishponds, Bristol BS16 2EW | 01173 211 240

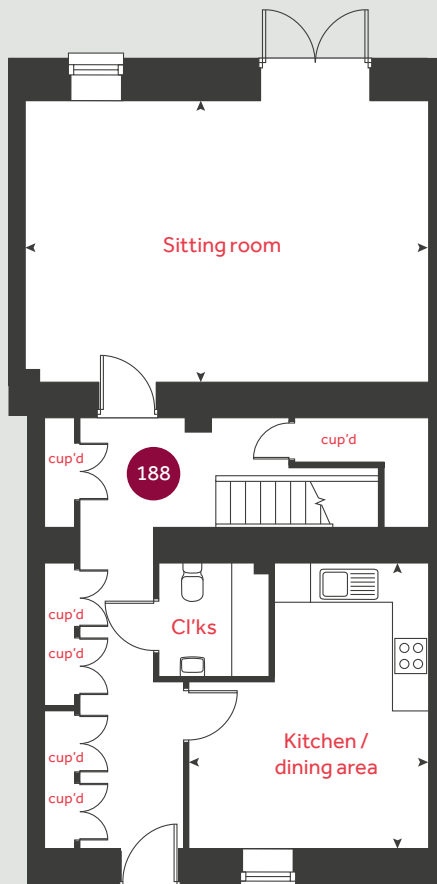
lindenhomes.co.uk

Linden
HOMES

First floor



Ground floor



The Foxglove

4 bedroom home

Home 188

Ground floor

Kitchen / dining area

4.70m x 3.97m 15' 5" x 13' 0"

Sitting room

6.68m x 4.61m 21' 11" x 15' 1"

First floor

Bedroom 1

3.54m x 3.28m 11' 7" x 10' 9"

Bedroom 2

3.28m x 3.05m 10' 9" x 10' 0"

Bedroom 3

4.81m x 3.13m 15' 9" x 10' 3"

Bedroom 4

3.66m x 3.15m 12' 0" x 10' 4"

cup'd cupboard < > measuring points

Please note, floorplans and dimensions are taken from architectural drawings and are for guidance only. Dimensions stated are within a tolerance of plus or minus 50mm. Overall dimensions are usually stated and there may be projections into these. With our continual improvement policy we constantly review our designs and specification to ensure we deliver the best products to our customers. Computer generated images not to scale. Finishes and materials may vary and landscaping is illustrative only. Kitchen layouts are indicative only and may change. To confirm specific details on our homes please see our sales consultant.

Produced by Vistry Group Design Studio.

When you have finished with this leaflet please recycle it.

680 DS04932 / 02.23

Linden
HOMES



The Foxglove

4 bedroom home

Plot 189

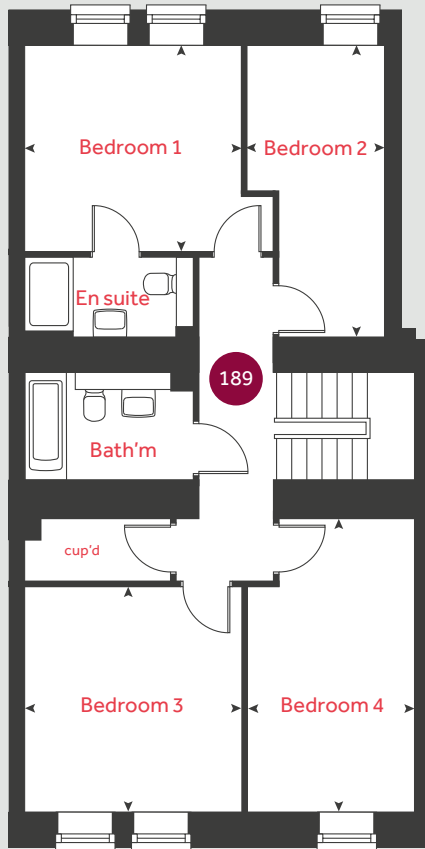
Blackberry Hill

Fishponds, Bristol BS16 2EW | 01173 211 240

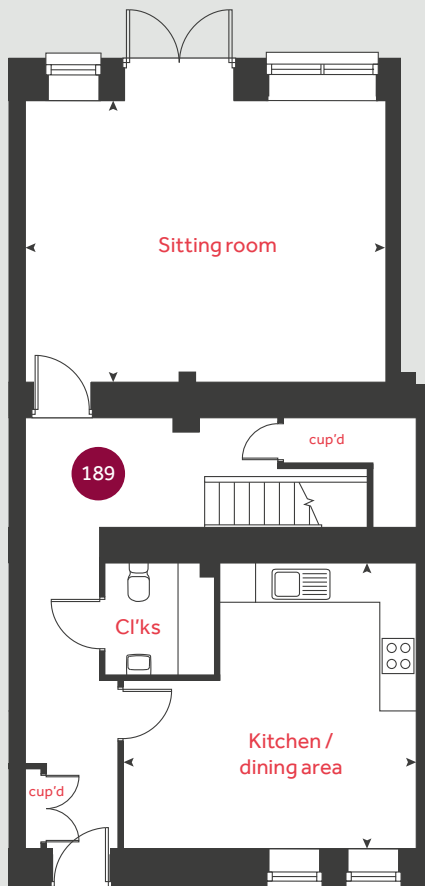
lindenhomes.co.uk

Linden
HOMES

First floor



Ground floor



The Foxglove

4 bedroom home

Home 189

Ground floor

Kitchen / dining area

4.84m x 4.71m 15' 11" x 15' 5"

Sitting room

5.97m x 4.61m 19' 7" x 15' 1"

First floor

Bedroom 1

3.59m x 3.30m 11' 9" x 10' 10"

Bedroom 2

4.76m x 2.27m 15' 7" x 7' 5"

Bedroom 3

3.67m x 3.59m 12' 0" x 11' 9"

Bedroom 4

4.80m x 2.77m 15' 9" x 9' 1"

cup'd

cupboard



measuring points

Please note, floorplans and dimensions are taken from architectural drawings and are for guidance only. Dimensions stated are within a tolerance of plus or minus 50mm. Overall dimensions are usually stated and there may be projections into these. With our continual improvement policy we constantly review our designs and specification to ensure we deliver the best products to our customers. Computer generated images not to scale. Finishes and materials may vary and landscaping is illustrative only. Kitchen layouts are indicative only and may change. To confirm specific details on our homes please see our sales consultant.

Produced by Vistry Group Design Studio.

When you have finished with this leaflet please recycle it.

680 DS04932 / 02.23

Linden

HOMES



The Foxglove

4 bedroom home

Plot 190

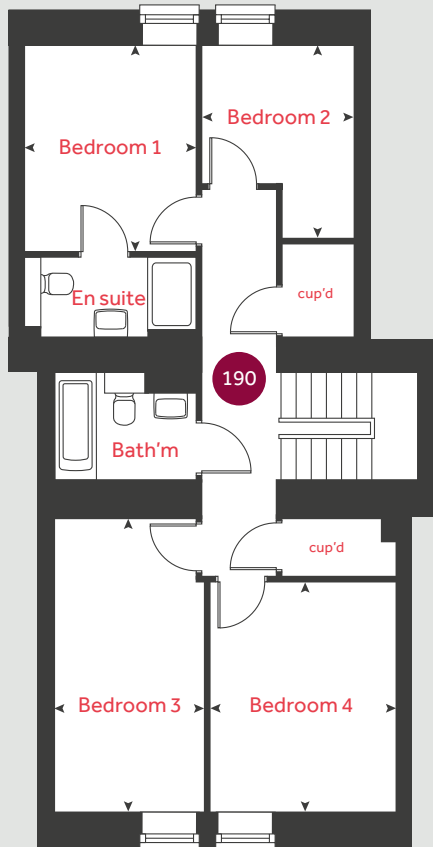
Blackberry Hill

Fishponds, Bristol BS16 2EW | 01173 211 240

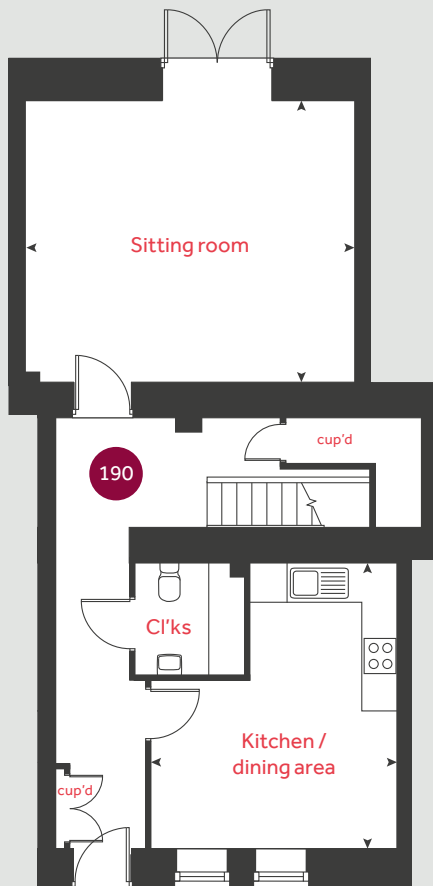
lindenhomes.co.uk

Linden
HOMES

First floor



Ground floor



The Foxglove

4 bedroom home

Home 190

Ground floor

Kitchen / dining area

4.71m x 4.07m 15' 5" x 13' 4"

Sitting room

5.46m x 4.66m 17' 11" x 15' 3"

First floor

Bedroom 1

3.30m x 2.84m 10' 10" x 9' 4"

Bedroom 2

3.05m x 2.81m 10' 0" x 9' 3"

Bedroom 3

4.81m x 2.48m 15' 9" x 8' 2"

Bedroom 4

3.76m x 3.08m 12' 4" x 10' 1"

cup'd

cupboard

◀ ▶

measuring points

Please note, floorplans and dimensions are taken from architectural drawings and are for guidance only. Dimensions stated are within a tolerance of plus or minus 50mm. Overall dimensions are usually stated and there may be projections into these. With our continual improvement policy we constantly review our designs and specification to ensure we deliver the best products to our customers. Computer generated images not to scale. Finishes and materials may vary and landscaping is illustrative only. Kitchen layouts are indicative only and may change. To confirm specific details on our homes please see our sales consultant.

Produced by Vistry Group Design Studio.

When you have finished with this leaflet please recycle it.

680 DS04932 / 02.23

Linden

HOMES



The Foxglove

4 bedroom home

Plot 191

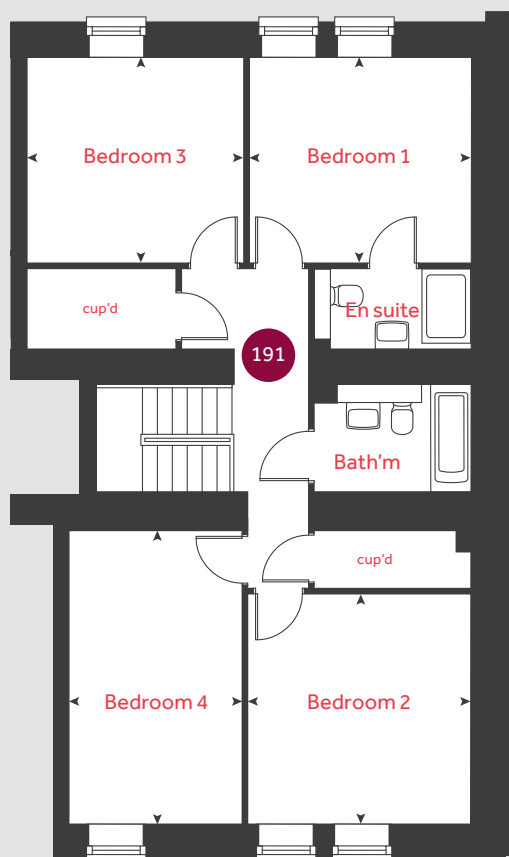
Blackberry Hill

Fishponds, Bristol BS16 2EW | 01173 211 240

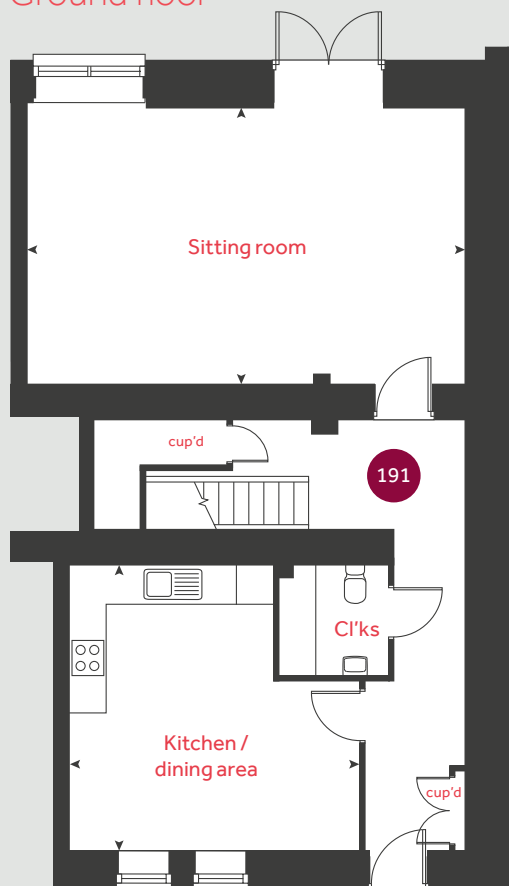
lindenhomes.co.uk

Linden
HOMES

First floor



Ground floor



The Foxglove

4 bedroom home

Home 191

Ground floor

Kitchen / dining area

4.80m x 4.72m 15' 9" x 15' 6"

Sitting room

7.26m x 4.59m 23' 10" x 15' 1"

First floor

Bedroom 1

3.68m x 3.27m 12' 1" x 10' 9"

Bedroom 2

3.75m x 3.64m 12' 4" x 11' 11"

Bedroom 3

3.59m x 3.27m 11' 9" x 10' 9"

Bedroom 4

4.84m x 2.87m 15' 11" x 9' 5"

cup'd cupboard < > measuring points

Please note, floorplans and dimensions are taken from architectural drawings and are for guidance only. Dimensions stated are within a tolerance of plus or minus 50mm. Overall dimensions are usually stated and there may be projections into these. With our continual improvement policy we constantly review our designs and specification to ensure we deliver the best products to our customers. Computer generated images not to scale. Finishes and materials may vary and landscaping is illustrative only. Kitchen layouts are indicative only and may change. To confirm specific details on our homes please see our sales consultant.

Produced by Vistry Group Design Studio.

When you have finished with this leaflet please recycle it.

680 DS04932 / 02.23

Linden
HOMES