



The Sycamore

2 bedroom home

Lyneham Fields

South View, Lyneham, Wiltshire SN15 4PG | 01249 510 095

lindenhomes.co.uk

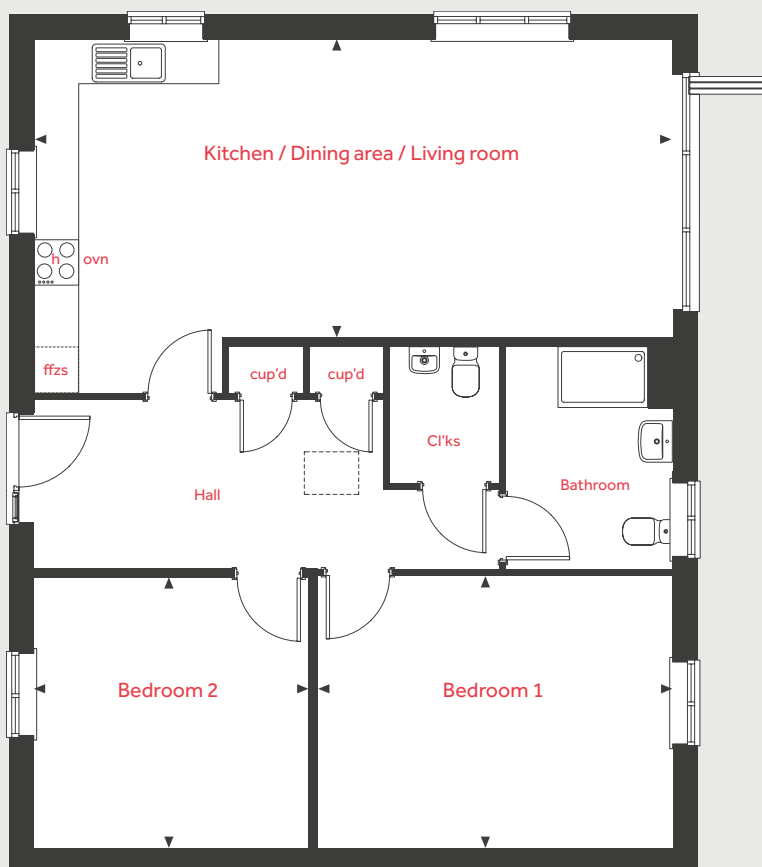
Linden
HOMES

The Sycamore

2 bedroom home

Homes 18, 19

Ground Floor



Ground Floor

Kitchen / Dining area / Living room

8.45m x 3.95m 27'8" x 13'0"

Bedroom 1

4.69m x 3.60m 15'5" x 11'10"

Bedroom 2

3.64m x 3.57m 11'11" x 11'8"

| | | | |
|------|----------------------|-------|------------------------|
| ovn | oven | cup'd | cupboard |
| h | hob | ◀ ▶ | measuring points |
| ffzs | loft hatch | --- | reduced ceiling height |
| | fridge freezer space | | |

The illustrations shown are computer generated impressions of how the property may look and are indicative only. External details or finishes may vary on individual plots and homes may be built in either detached or attached styles depending on the development layout. Exact specifications, window styles and whether a property is left or righthanded may differ from plot to plot. Please speak to our sales consultant for specific plot details.

The floorplan has been produced for illustrative purposes only. Room sizes shown are between arrow points as indicated on plan. The dimensions have tolerances of + or - 50mm and should not be used other than for general guidance. If specific dimensions are required, enquiries should be made to the sales consultant. The floor plans shown are not to scale. Measurements are based on the original drawings. Slight variations may occur during construction.

08.23

Linden
HOMES



The Beckett

3 bedroom home

Lyneham Fields

South View, Lyneham, Wiltshire SN15 4PG | 01249 510 095

lindenhomes.co.uk

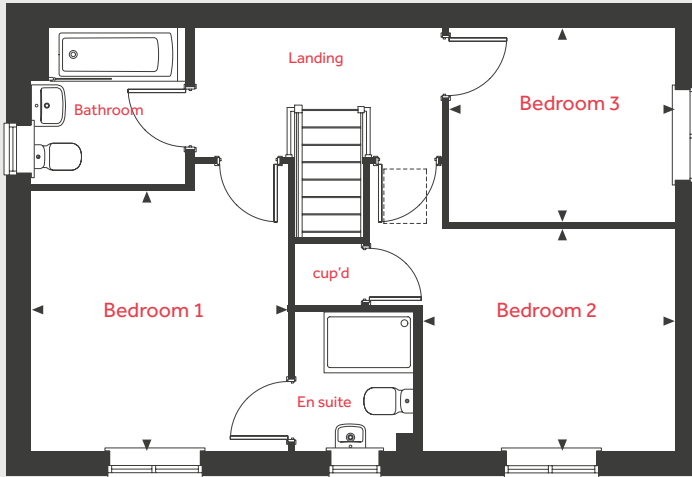
Linden
HOMES

The Beckett

3 bedroom home

Home 31

First Floor



Ground Floor

Kitchen / Dining area

5.59m x 2.94m 18'4" x 9'8"

Living room

5.59m x 3.33m 18'4" x 10'11"

First Floor

Bedroom 1

3.44m x 3.39m 11'3" x 11'2"

Bedroom 2

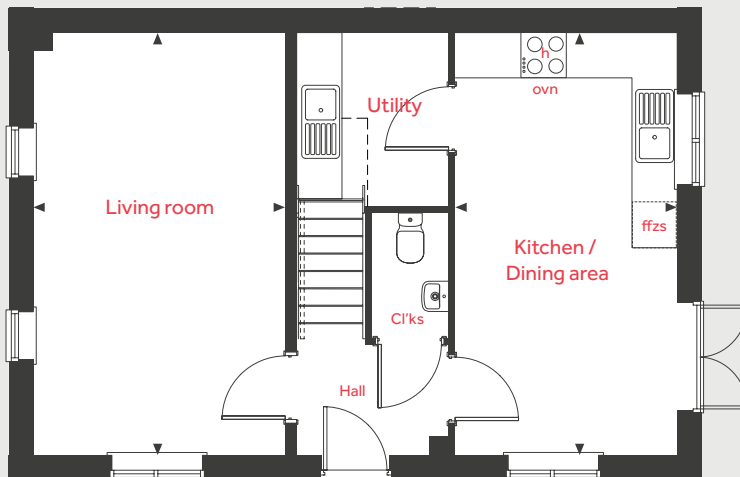
3.34m x 2.94m 10'11" x 9'8"

Bedroom 3

2.99m x 2.56m 9'10" x 8'5"

| | | | |
|------------|----------------------|-------|------------------------|
| ovn | oven | cup'd | cupboard |
| h | hob | ◀ ▶ | measuring points |
| loft hatch | loft hatch | --- | reduced ceiling height |
| ffzs | fridge freezer space | | |

Ground Floor



The illustrations shown are computer generated impressions of how the property may look and are indicative only. External details or finishes may vary on individual plots and homes may be built in either detached or attached styles depending on the development layout. Exact specifications, window styles and whether a property is left or righthanded may differ from plot to plot. Please speak to our sales consultant for specific plot details.

The floorplan has been produced for illustrative purposes only. Room sizes shown are between arrow points as indicated on plan. The dimensions have tolerances of + or - 50mm and should not be used other than for general guidance. If specific dimensions are required, enquiries should be made to the sales consultant. The floor plans shown are not to scale. Measurements are based on the original drawings. Slight variations may occur during construction.

08.23

Linden
HOMES



The Beckett

3 bedroom home

Lyneham Fields

South View, Lyneham, Wiltshire SN15 4PG | 01249 510 095

lindenhomes.co.uk

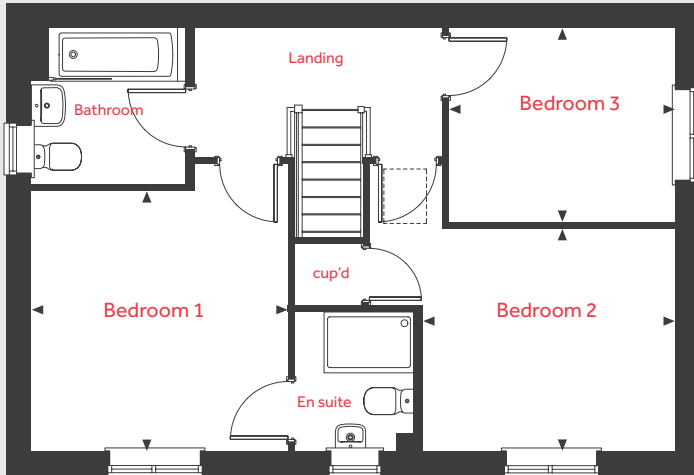
Linden
HOMES

The Beckett

3 bedroom home

Home 50

First Floor



Ground Floor

Kitchen / Dining area

5.59m x 2.94m 18'4" x 9'8"

Living room

5.59m x 3.33m 18'4" x 10'11"

First Floor

Bedroom 1

3.44m x 3.39m 11'3" x 11'2"

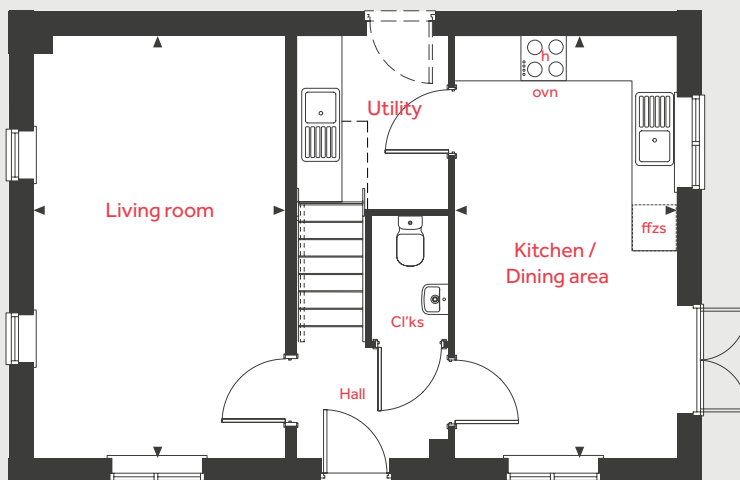
Bedroom 2

3.34m x 2.94m 10'11" x 9'8"

Bedroom 3

2.99m x 2.56m 9'10" x 8'5"

Ground Floor



| | | | |
|------------|----------------------|-------|------------------------|
| ovn | oven | cup'd | cupboard |
| h | hob | ◀ ▶ | measuring points |
| loft hatch | loft hatch | --- | reduced ceiling height |
| ffzs | fridge freezer space | | |

The illustrations shown are computer generated impressions of how the property may look and are indicative only. External details or finishes may vary on individual plots and homes may be built in either detached or attached styles depending on the development layout. Exact specifications, window styles and whether a property is left or righthanded may differ from plot to plot. Please speak to our sales consultant for specific plot details.

The floorplan has been produced for illustrative purposes only. Room sizes shown are between arrow points as indicated on plan. The dimensions have tolerances of + or - 50mm and should not be used other than for general guidance. If specific dimensions are required, enquiries should be made to the sales consultant. The floor plans shown are not to scale. Measurements are based on the original drawings. Slight variations may occur during construction.

08.23

Linden
HOMES



The Ledbury

3 bedroom home

Lyneham Fields

South View, Lyneham, Wiltshire SN15 4PG | 01249 510 095

lindenhomes.co.uk

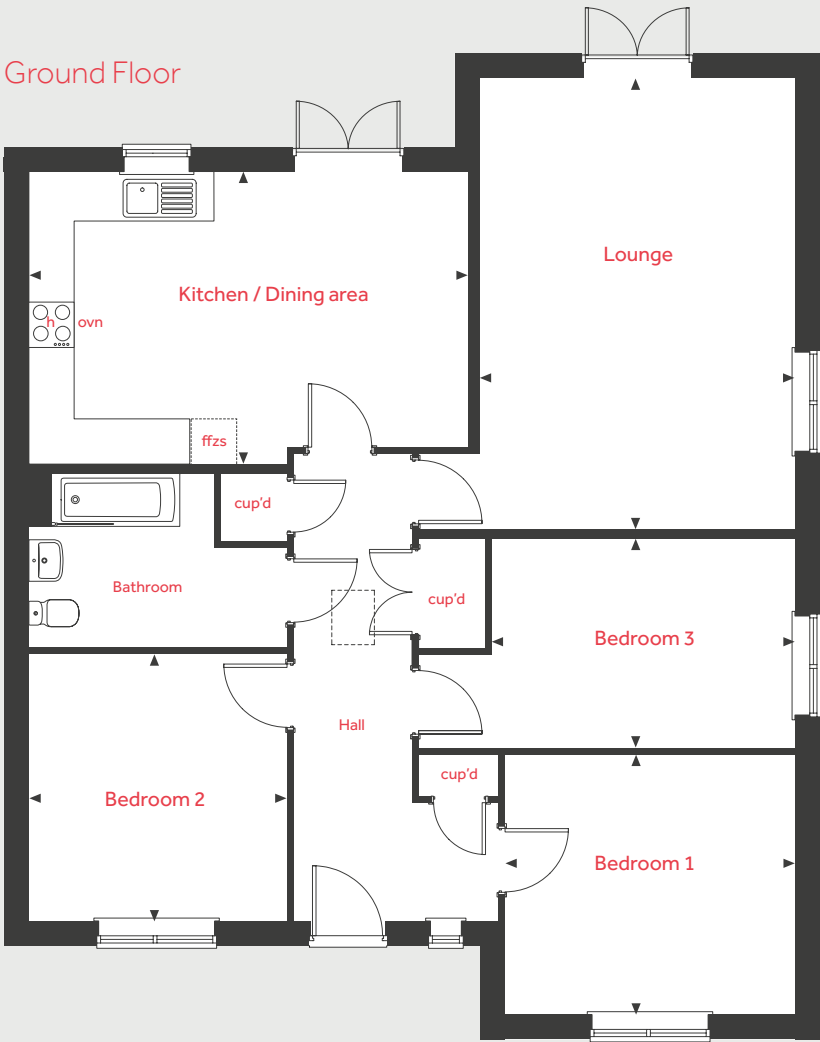
Linden
HOMES

The Ledbury

3 bedroom home

Home 21

Ground Floor



Ground Floor

Kitchen / Dining area

5.89m x 3.92m 19'4" x 12'10"

Lounge

6.02m x 4.22m 19'9" x 13'10"

Bedroom 1

3.89m x 3.48m 12'9" x 11'5"

Bedroom 2

3.57m x 3.46m 11'9" x 11'4"

Bedroom 3

4.05m x 2.80m 13'3" x 9'2"

| | | | |
|------|----------------------|-------|------------------------|
| ovn | oven | cup'd | cupboard |
| h | hob | < > | measuring points |
| ffzs | loft hatch | --- | reduced ceiling height |
| | fridge freezer space | | |

The illustrations shown are computer generated impressions of how the property may look and are indicative only. External details or finishes may vary on individual plots and homes may be built in either detached or attached styles depending on the development layout. Exact specifications, window styles and whether a property is left or righthanded may differ from plot to plot. Please speak to our sales consultant for specific plot details.

The floorplan has been produced for illustrative purposes only. Room sizes shown are between arrow points as indicated on plan. The dimensions have tolerances of + or - 50mm and should not be used other than for general guidance. If specific dimensions are required, enquiries should be made to the sales consultant. The floor plans shown are not to scale. Measurements are based on the original drawings. Slight variations may occur during construction.

08.23

Linden
HOMES



The Ledbury

3 bedroom home

Lyneham Fields

South View, Lyneham, Wiltshire SN15 4PG | 01249 510 095

lindenhomes.co.uk

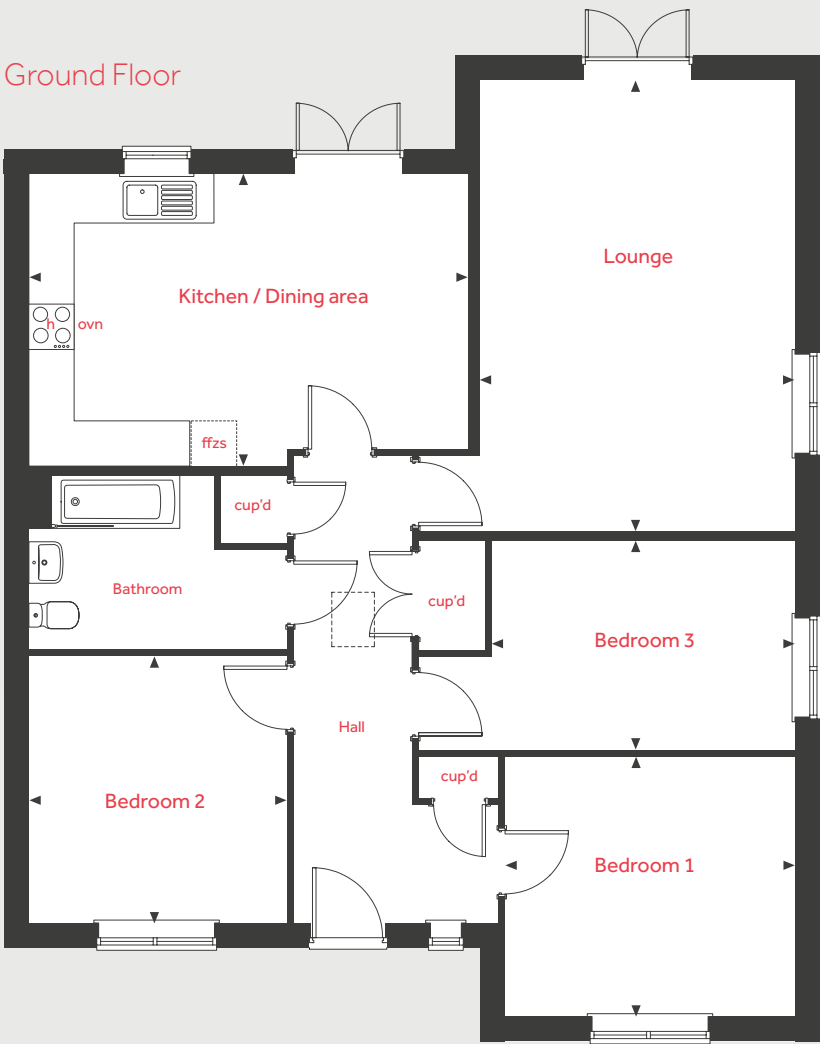
Linden
HOMES

The Ledbury

3 bedroom home

Home 20

Ground Floor



Ground Floor

Kitchen / Dining area

5.89m x 3.92m 19'4" x 12'10"

Lounge

6.02m x 4.22m 19'9" x 13'10"

Bedroom 1

3.89m x 3.48m 12'9" x 11'5"

Bedroom 2

3.57m x 3.46m 11'9" x 11'4"

Bedroom 3

4.05m x 2.80m 13'3" x 9'2"

| | | | |
|------|----------------------|-------|------------------------|
| ovn | oven | cup'd | cupboard |
| h | hob | < > | measuring points |
| ffzs | loft hatch | --- | reduced ceiling height |
| | fridge freezer space | | |

The illustrations shown are computer generated impressions of how the property may look and are indicative only. External details or finishes may vary on individual plots and homes may be built in either detached or attached styles depending on the development layout. Exact specifications, window styles and whether a property is left or righthanded may differ from plot to plot. Please speak to our sales consultant for specific plot details.

The floorplan has been produced for illustrative purposes only. Room sizes shown are between arrow points as indicated on plan. The dimensions have tolerances of + or - 50mm and should not be used other than for general guidance. If specific dimensions are required, enquiries should be made to the sales consultant. The floor plans shown are not to scale. Measurements are based on the original drawings. Slight variations may occur during construction.

08.23

Linden
HOMES



The Kempthorne

4 bedroom home

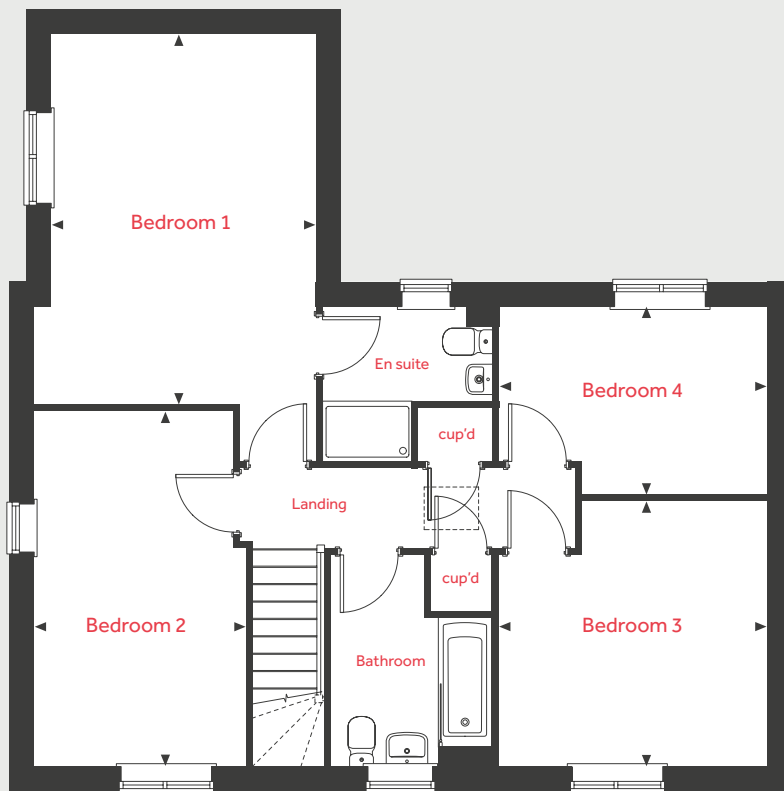
Lyneham Fields

South View, Lyneham, Wiltshire SN15 4PG | 01249 510 095

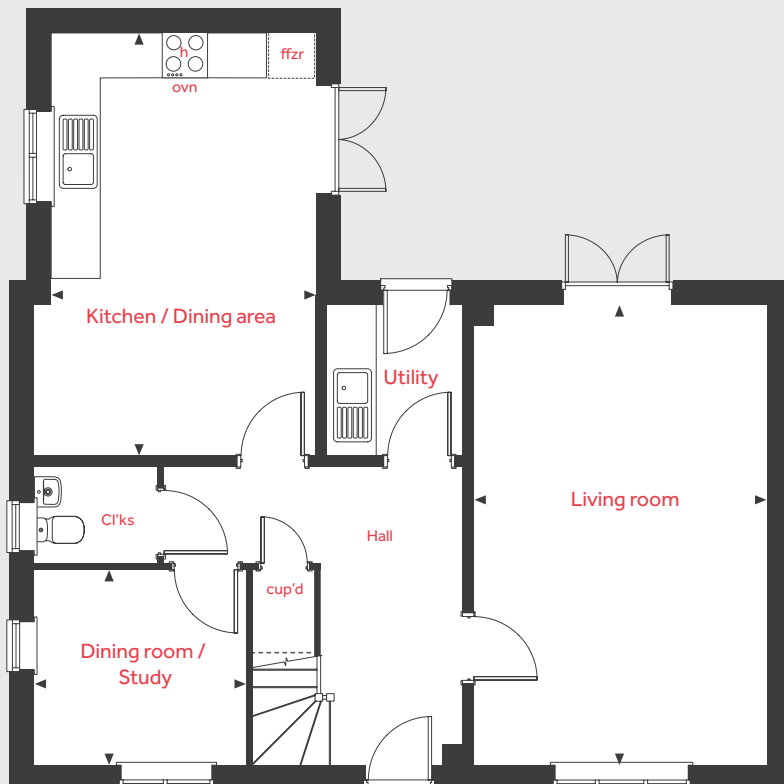
lindenhomes.co.uk

Linden
HOMES

First Floor



Ground Floor



The Kempthorne

4 bedroom home

Homes 2, 4, 7, 24, 28, 35, 49

Ground Floor

Kitchen / Dining area

5.61m x 3.50m 18'5" x 11'6"

Living room

6.09m x 3.88m 20'0" x 12'9"

Dining room / Study

2.80m x 2.59m 9'2" x 8'6"

First Floor

Bedroom 1

4.90m x 3.50m 16'1" x 11'6"

Bedroom 2

4.70m x 2.80m 15'5" x 9'2"

Bedroom 3

3.54m x 3.51m 11'7" x 11'6"

Bedroom 4

3.57m x 2.53m 11'7" x 8'2"

| ovn | oven | cup'd | cupboard |
|------|----------------|-------|------------------------|
| h | hob | ← → | measuring points |
| | loft hatch | --- | reduced ceiling height |
| ffzr | fridge freezer | | |

The illustrations shown are computer generated impressions of how the property may look and are indicative only. External details or finishes may vary on individual plots and homes may be built in either detached or attached styles depending on the development layout. Exact specifications, window styles and whether a property is left or righthanded may differ from plot to plot. Please speak to our sales consultant for specific plot details.

The floorplan has been produced for illustrative purposes only. Room sizes shown are between arrow points as indicated on plan. The dimensions have tolerances of + or - 50mm and should not be used other than for general guidance. If specific dimensions are required, enquiries should be made to the sales consultant. The floor plans shown are not to scale. Measurements are based on the original drawings. Slight variations may occur during construction.

08.23

Linden
HOMES



The Kempthorne

4 bedroom home

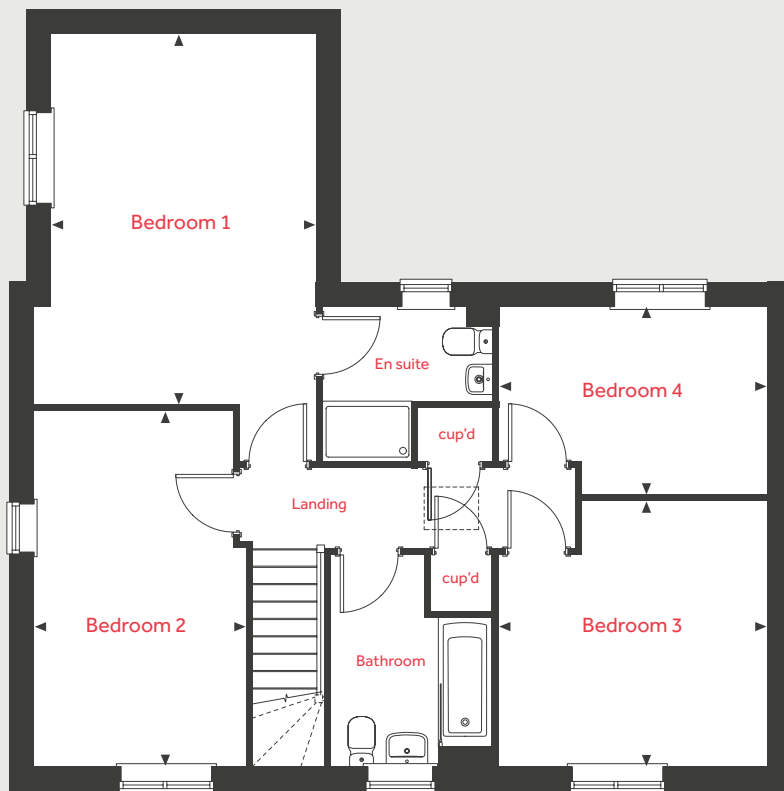
Lyneham Fields

South View, Lyneham, Wiltshire SN15 4PG | 01249 510 095

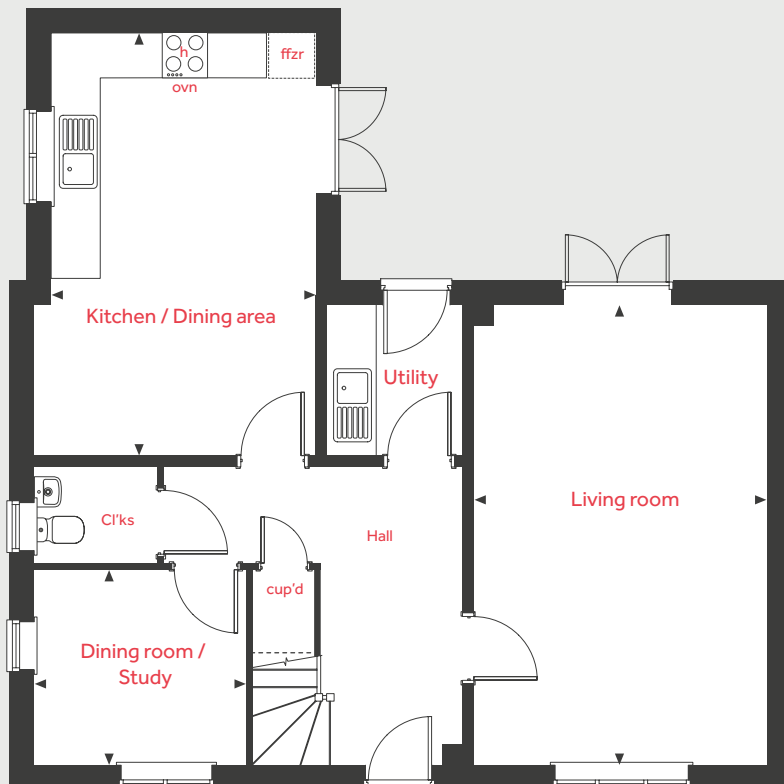
lindenhomes.co.uk

Linden
HOMES

First Floor



Ground Floor



The Kempthorne

4 bedroom home

Home 1

Ground Floor

Kitchen / Dining area

5.61m x 3.50m 18'5" x 11'6"

Living room

6.09m x 3.88m 20'0" x 12'9"

Dining room / Study

2.80m x 2.59m 9'2" x 8'6"

First Floor

Bedroom 1

4.90m x 3.50m 16'1" x 11'6"

Bedroom 2

4.70m x 2.80m 15'5" x 9'2"

Bedroom 3

3.54m x 3.51m 11'7" x 11'6"

Bedroom 4

3.57m x 2.53m 11'7" x 8'2"

| ovn | oven | cup'd | cupboard |
|------|----------------|-------|------------------------|
| h | hob | < > | measuring points |
| | loft hatch | --- | reduced ceiling height |
| ffzr | fridge freezer | | |

The illustrations shown are computer generated impressions of how the property may look and are indicative only. External details or finishes may vary on individual plots and homes may be built in either detached or attached styles depending on the development layout. Exact specifications, window styles and whether a property is left or righthanded may differ from plot to plot. Please speak to our sales consultant for specific plot details.

The floorplan has been produced for illustrative purposes only. Room sizes shown are between arrow points as indicated on plan. The dimensions have tolerances of + or - 50mm and should not be used other than for general guidance. If specific dimensions are required, enquiries should be made to the sales consultant. The floor plans shown are not to scale. Measurements are based on the original drawings. Slight variations may occur during construction.

08.23

Linden
HOMES



The Mylne

4 bedroom home

Lyneham Fields

South View, Lyneham, Wiltshire SN15 4PG | 01249 510 095

lindenhomes.co.uk

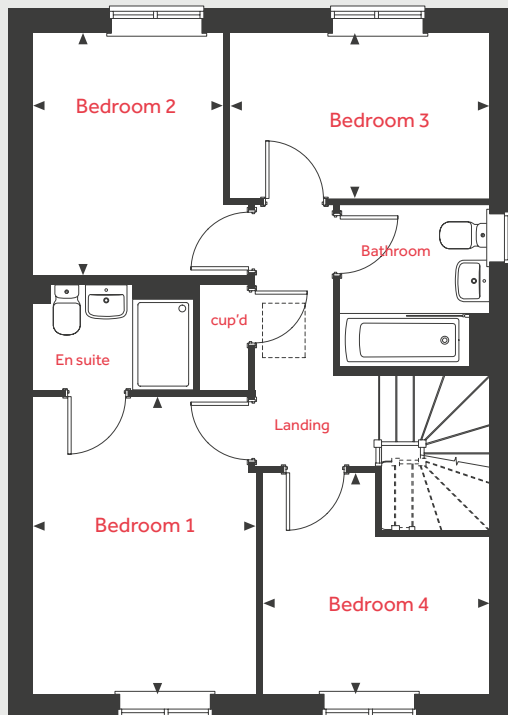
Linden
HOMES

The Mylne

4 bedroom home

Homes 25, 27, 33

First Floor



Ground Floor

Kitchen / Family / Dining area

6.04m x 3.76m 19'10" x 12'4"

Living room

4.84m x 3.40m 15'10" x 11'2"

First Floor

Bedroom 1

3.94m x 2.95m 12'11" x 9'8"

Bedroom 2

3.21m x 2.52m 10'6" x 8'3"

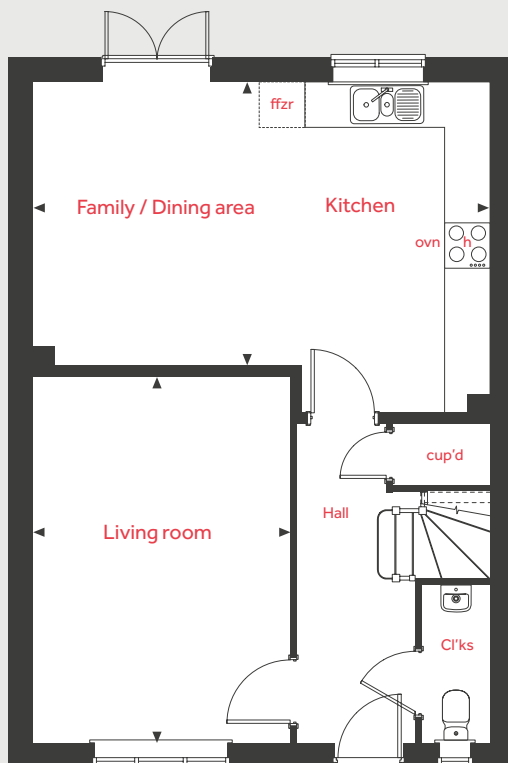
Bedroom 3

3.43m x 2.19m 11'3" x 7'2"

Bedroom 4

3.00m x 2.09m 9'10" x 6'10"

Ground Floor



| | | | |
|------|------------|-------|------------------------|
| ovn | oven | cup'd | cupboard |
| h | hob | < > | measuring points |
| ffzr | loft hatch | --- | reduced ceiling height |
| | ffzr | | fridge freezer |

The illustrations shown are computer generated impressions of how the property may look and are indicative only. External details or finishes may vary on individual plots and homes may be built in either detached or attached styles depending on the development layout. Exact specifications, window styles and whether a property is left or righthanded may differ from plot to plot. Please speak to our sales consultant for specific plot details.

The floorplan has been produced for illustrative purposes only. Room sizes shown are between arrow points as indicated on plan. The dimensions have tolerances of + or - 50mm and should not be used other than for general guidance. If specific dimensions are required, enquiries should be made to the sales consultant. The floor plans shown are not to scale. Measurements are based on the original drawings. Slight variations may occur during construction.

08.23

Linden
HOMES



The Pembroke

4 bedroom home

Lyneham Fields

South View, Lyneham, Wiltshire SN15 4PG | 01249 510 095

lindenhomes.co.uk

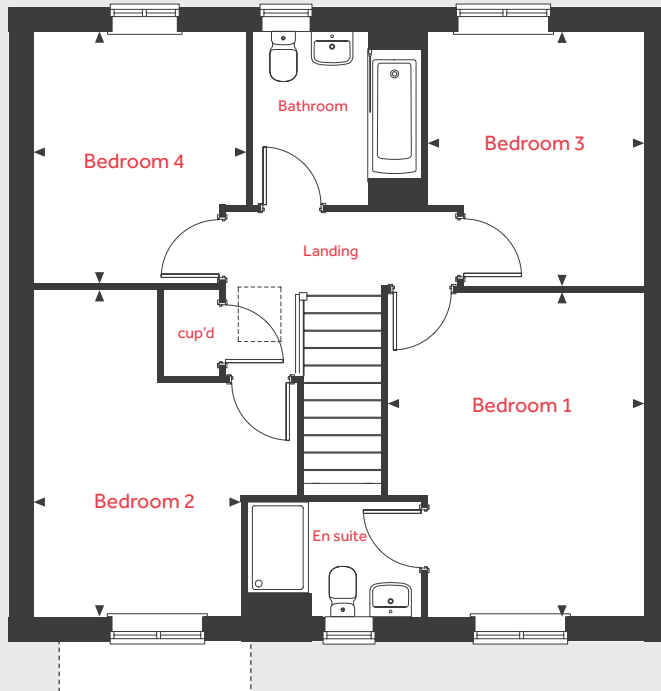
Linden
HOMES

The Pembroke

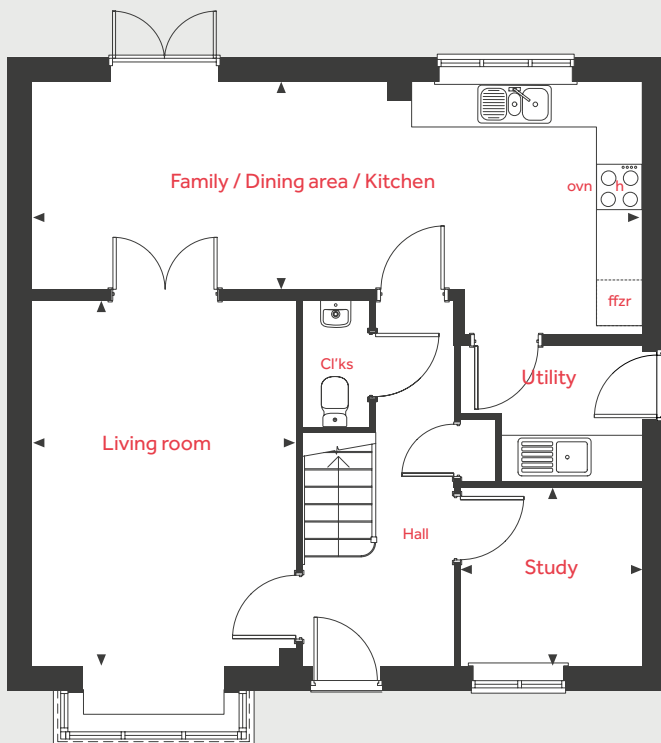
4 bedroom home

Homes 3, 5, 6, 26, 29, 30, 32, 34

First Floor



Ground Floor



Ground Floor

Family / Dining area / Kitchen

8.07m x 2.75m 26'6" x 9'0"

Living room

4.83m x 3.49m 15'10" x 11'5"

Study

2.40m x 2.36m 7'11" x 7'9"

First Floor

Bedroom 1

4.28m x 3.39m 14'1" x 11'1"

Bedroom 2

4.31m x 2.74m 14'2" x 9'0"

Bedroom 3

3.36m x 2.87m 11'0" x 9'5"

Bedroom 4

3.33m x 2.81m 10'11" x 9'3"

| | | | |
|------|----------------|-------|------------------------|
| ovn | oven | cup'd | cupboard |
| h | hob | < > | measuring points |
| ffzr | loft hatch | --- | reduced ceiling height |
| | fridge freezer | | |

The illustrations shown are computer generated impressions of how the property may look and are indicative only. External details or finishes may vary on individual plots and homes may be built in either detached or attached styles depending on the development layout. Exact specifications, window styles and whether a property is left or righthanded may differ from plot to plot. Please speak to our sales consultant for specific plot details.

The floorplan has been produced for illustrative purposes only. Room sizes shown are between arrow points as indicated on plan. The dimensions have tolerances of + or - 50mm and should not be used other than for general guidance. If specific dimensions are required, enquiries should be made to the sales consultant. The floor plans shown are not to scale. Measurements are based on the original drawings. Slight variations may occur during construction.

08.23

Linden
HOMES