

Spinnaker

Westbury



Spinnaker Westbury

Spinnaker is a brand new collection of 2, 3, & 4 bedroom homes in the market town of Westbury in Wiltshire.

Spinnaker is a fantastic new development of family homes on the outskirts of Westbury adjacent to Westbury Sailing Lake. Just 17 miles from Bath and a few minutes' walk from the mainline train station, Spinnaker balances the best of town and country and provides excellent transport connections.

Westbury is a small market town on the edge of Wiltshire nestled under the chalk bluffs of Salisbury Plain where the impressive 400-year-old Westbury White Horse can be seen from miles around.

The town is centred around the charming Market Place that is presided over by the Old Town Hall. There is a Victorian swimming pool in a beautiful listed building with an arched mosaic ceiling. A selection of shops, banks and supermarkets are amongst the local amenities. There are good opportunities for dining out with cafes, pubs and restaurants and the town provides a range of schools for all ages.

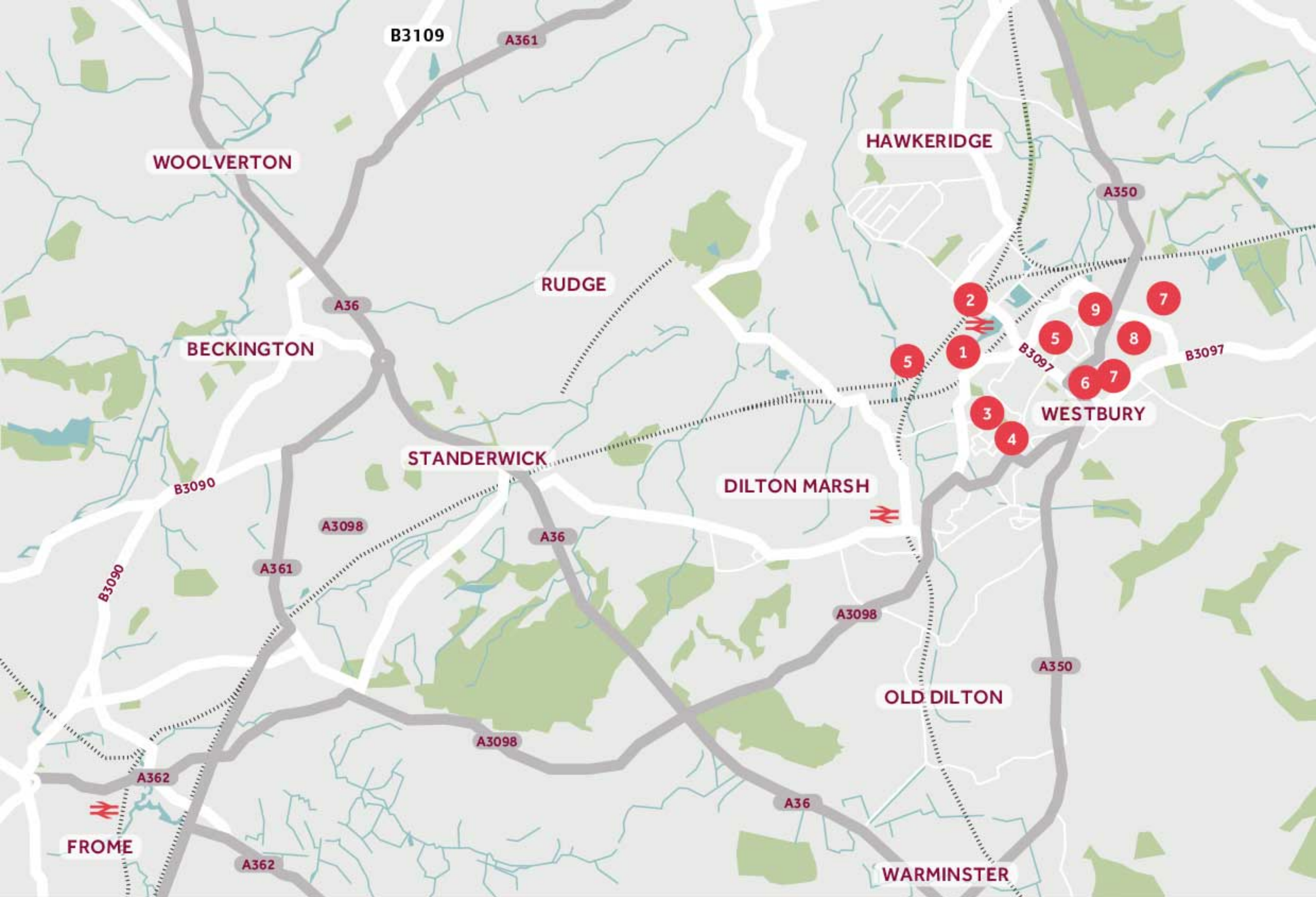
Westbury Station lies on an important network providing fast direct services to Bath, Bristol, Salisbury, Reading and London.

Spinnaker

Station Approach, Westbury BA13 4HP | 01373 441 689

lindenhomes.co.uk

Linden
HOMES



Around the local neighbourhood

1

Spinnaker
BA13 4HP

2

Westbury Station
BA13 4HP

3

Westbury Infants School
BA13 3NU

4

Matravers School
BA13 3QH

5

Westbury United Football Club
BA13 3AF

6

Morrisons
BA13 3BL

7

Westbury Swimming Pool
BA13 3BY

8

Bitham Brook Primary School
BA13 3UA

9

Tesco Express
BA13 3AY



Cycleway to
Westbury Train
Station



Potential
future council
road / byway

Development layout

4 bedroom home

- The Leigh
- The Aslin
- The Burnet
- The Goodridge
- The Kempthorne
- The Leverton
- The Mylne
- The Pembroke

3 bedroom home

- The Heywood
- The Berkeley
- The Eveleigh
- The Mountford

2 bedroom home

- The Ashbee
- The Harcourt
- The Bradley Apartments

- PS Pump Station
- SS Sub Station
- BCP Bin Collection Point
- CS Cycle Store
- Bollards
- Garage Entrance
- v Visitor Parking Space
- A Parking Reserved for Angling Association

Not to scale. Trees and landscaping are indicative only and may alter during construction. The trees, shrubs and gardens shown are illustrative only. Finishes and materials may vary from those shown here. Please ask your Sales Executive for specific details.



The Ashbee 2 bedroom home

Plots 34, 47, 105, 134, 184, 191, 214

Spinnaker

Station Approach, Westbury BA13 4HP | 01373 441 689

lindenhomes.co.uk

Linden
HOMES

The Ashbee

2 bedroom home

Plots 34, 47, 105, 134,184,
191, 214

First Floor



Ground Floor

Neighbour's garages form drive-through on Plot 34

First Floor

Kitchen/Dining Area/Living		
6.91m x 6.04m	22'8" x 19'9"	
Bedroom 1		
3.99m x 2.88m	13'1" x 9'5"	
Bedroom 2		
2.88m x 2.51m	9'5" x 8'3"	

Ground Floor



ovn	oven	cyl	hot water cylinder
h	hob	w	wardrobe
dw	dishwasher	cup'd	cupboard
wm	washing machine	◀ ▶	measuring points
ffzr	fridge freezer		

Please note, floorplans and dimensions are taken from architectural drawings and are for guidance only. Dimensions stated are within a tolerance of plus or minus 50mm. Overall dimensions are usually stated and there may be projections into these. With our continual improvement policy we constantly review our designs and specification to ensure we deliver the best product to our customers. Computer generated images not to scale. Finishes and materials may vary and landscaping is illustrative only. Kitchen layouts are indicative only and may change. To confirm specific details on our homes please ask your Sales Executive. LINW121/August 2020.

Linden
HOMES



The Aslin 4 bedroom home

Plots 4, 19, 20, 23, 24, 51, 52, 55, 56, 118, 194, 199, 202, 204, 206,
207, 209, 210, 252, 253, 254, 255

Spinnaker

Station Approach, Westbury BA13 4HP | 01373 441 689

lindenhomes.co.uk

Linden
HOMES

Second Floor



First Floor



The Aslin

4 bedroom home

Plots 4, 19, 20, 23, 24, 51, 52, 55, 56, 118, 194, 199, 202, 204, 206, 207, 209, 210, 252, 253, 254, 255

Ground Floor

Kitchen/Dining Area

4.78m x 2.80m 15'8" x 9'2"

Living

First Floor

Bedroom 2

Bedroom 3

Bedroom 4

Second Floor

Bedroom 1

Ground Floor



Plot	Plot
1	1
2	2
3	3
4	4
5	5
6	6
7	7
8	8
9	9
10	10
11	11
12	12
13	13
14	14
15	15
16	16
17	17
18	18
19	19
20	20
21	21
22	22
23	23
24	24
25	25
26	26
27	27
28	28
29	29
30	30
31	31
32	32
33	33
34	34
35	35
36	36
37	37
38	38
39	39
40	40
41	41
42	42
43	43
44	44
45	45
46	46
47	47
48	48
49	49
50	50
51	51
52	52
53	53
54	54
55	55
56	56
57	57
58	58
59	59
60	60
61	61
62	62
63	63
64	64
65	65
66	66
67	67
68	68
69	69
70	70
71	71
72	72
73	73
74	74
75	75
76	76
77	77
78	78
79	79
80	80
81	81
82	82
83	83
84	84
85	85
86	86
87	87
88	88
89	89
90	90
91	91
92	92
93	93
94	94
95	95
96	96
97	97
98	98
99	99
100	100
101	101
102	102
103	103
104	104
105	105
106	106
107	107
108	108
109	109
110	110
111	111
112	112
113	113
114	114
115	115
116	116
117	117
118	118
119	119
120	120
121	121
122	122
123	123
124	124
125	125
126	126
127	127
128	128
129	129
130	130
131	131
132	132
133	133
134	134
135	135
136	136
137	137
138	138
139	139
140	140
141	141
142	142
143	143
144	144
145	145
146	146
147	147
148	148
149	149
150	150
151	151
152	152
153	153
154	154
155	155
156	156
157	157
158	158
159	159
160	160
161	161
162	162
163	163
164	164
165	165
166	166
167	167
168	168
169	169
170	170
171	171
172	172
173	173
174	174
175	175
176	176
177	177
178	178
179	179
180	180
181	181
182	182
183	183
184	184
185	185
186	186
187	187
188	188
189	189
190	190
191	191
192	192
193	193
194	194
195	195
196	196
197	197
198	198
199	199
200	200
201	201
202	202
203	203
204	204
205	205
206	206
207	207
208	208
209	209
210	210
211	211
212	212
213	213
214	214
215	215
216	216
217	217
218	218
219	219
220	220
221	221
222	222
223	223
224	224
225	225
226	226
227	227
228	228
229	229
230	230
231	231
232	232
233	233
234	234
235	235
236	236
237	237
238	238
239	239
240	240
241	241
242	242
243	243
244	244
245	245
246	246
247	247
248	248
249	249
250	250
251	251
252	252
253	253
254	254
255	255

Linden
HOMES



The Berkeley 3 bedroom home

Plots 9, 12, 36, 37, 38, 39, 40, 43, 99, 102, 131, 132, 153, 154, 158, 159, 168, 192, 193, 222, 223, 267, 271, 272, 276, 277, 278, 299, 300

Spinnaker

Station Approach, Westbury BA13 4HP | 01373 441 689

lindenhomes.co.uk

Linden
HOMES

The Berkeley

3 bedroom home

Plots 9, 12, 36, 37, 38, 39, 40, 43, 99, 102, 131, 132, 153, 154, 158, 159, 168, 192, 193, 222, 223, 267, 271, 272, 276, 277, 278, 299, 300

First Floor



Ground Floor

Kitchen/Dining Area

5.48m x 3.13m 17'11" x 10'3"

Living

4.56m x 3.24m 14'11" x 10'7"

First Floor

Bedroom 1

3.47m x 3.38m 11'4" x 11'1"

Bedroom 2

3.38m x 2.96m 11'1" x 9'8"

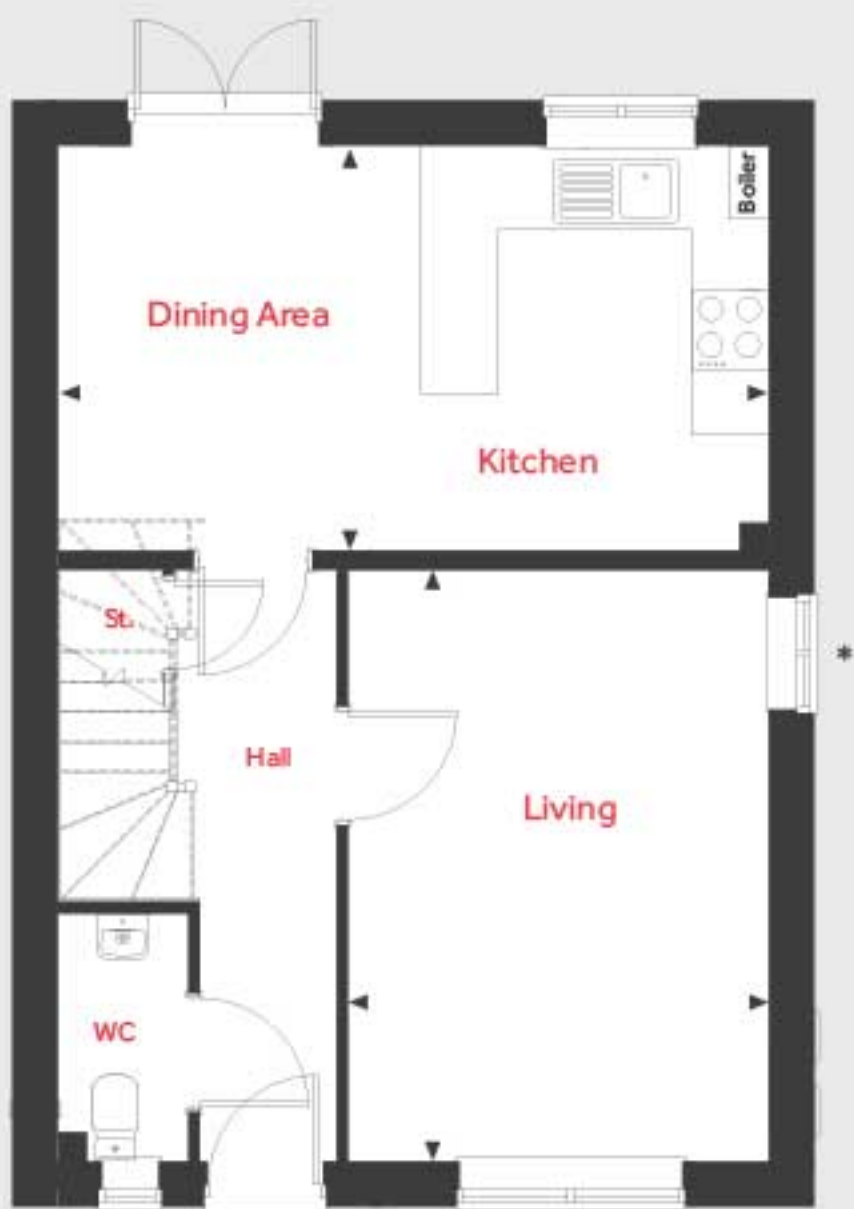
Bedroom 3

2.27m x 2.01m 9'2" x 6'7"

* Window to plots 39, 40, 192, 193, 299 and 300 only

** Window to plots 271 and 272 only

Ground Floor



ovn	oven	cyl	hot water cylinder
h	hob	w	wardrobe
dw	dishwasher	cup'd	cupboard
wm	washing machine	◀ ▶	measuring points
ffzr	fridge freezer		

Please note, floorplans and dimensions are taken from architectural drawings and are for guidance only. Dimensions stated are within a tolerance of plus or minus 50mm. Overall dimensions are usually stated and there may be projections into these. With our continual improvement policy we constantly review our designs and specification to ensure we deliver the best product to our customers. Computer generated images not to scale. Finishes and materials may vary and landscaping is illustrative only. Kitchen layouts are indicative only and may change. To confirm specific details on our homes please ask your Sales Executive. LINW121/August 2020.

Linden
HOMES



The Bradley 2 bedroom apartments - 2BF2

Plots 247, 249, 251

Spinnaker

Station Approach, Westbury BA13 4HP | 01373 441 689

lindenhomes.co.uk

Linden
HOMES

The Bradley

2 bedroom apartment

- 2BF2

Plots 247, 249, 251



Living/Kitchen/Dining Area

6.49m x 3.40m 21'3" x 11'1"

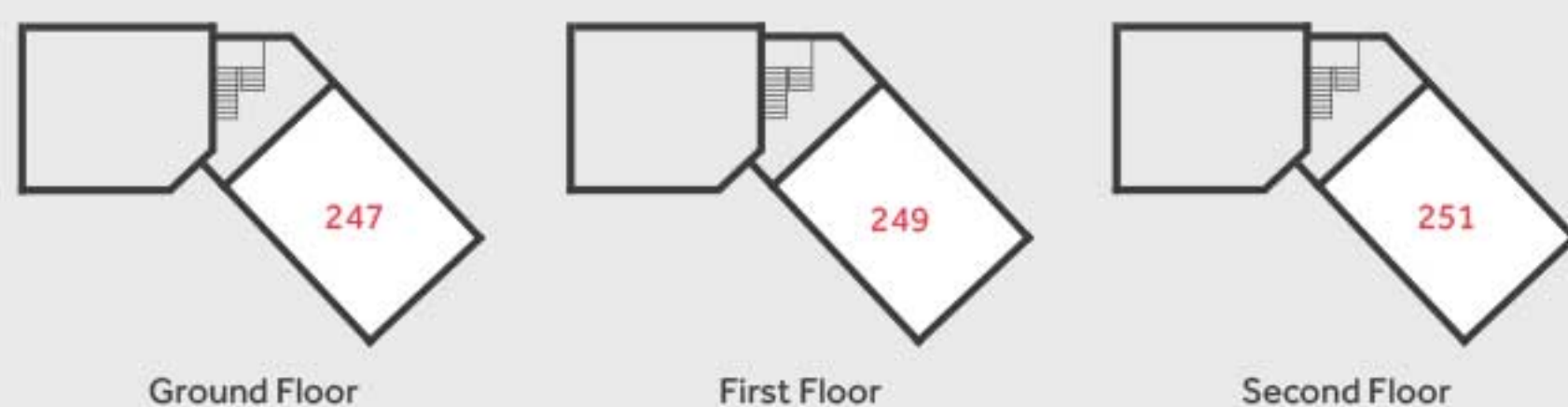
Bedroom 1

3.26m x 3.15m 10'8" x 10'4"

Bedroom 2

3.26m x 2.56m 10'8" x 8'4"

*Juliet balconies to Living Area and Bedroom 1 on 1st floor



ovn	oven	cyl	hot water cylinder
h	hob	w	wardrobe
dw	dishwasher	cup'd	cupboard
wm	washing machine	◀ ▶	measuring points
ffzr	fridge freezer		

Please note, floorplans and dimensions are taken from architectural drawings and are for guidance only. Dimensions stated are within a tolerance of plus or minus 50mm. Overall dimensions are usually stated and there may be projections into these. With our continual improvement policy we constantly review our designs and specification to ensure we deliver the best product to our customers. Computer generated images not to scale. Finishes and materials may vary and landscaping is illustrative only. Kitchen layouts are indicative only and may change. To confirm specific details on our homes please ask your Sales Executive. LINW121/August 2020.

Linden

HOMES



The Bradley 2 bedroom apartments - 2BF3

Plots 246, 248, 250

Spinnaker

Station Approach, Westbury BA13 4HP | 01373 441 689

lindenhomes.co.uk

Linden
HOMES

The Bradley

2 bedroom apartment
- 2BF3

Plots 246, 248, 250



Living/Kitchen/Dining Area

5.54m x 4.21m 18'2" x 13'9"

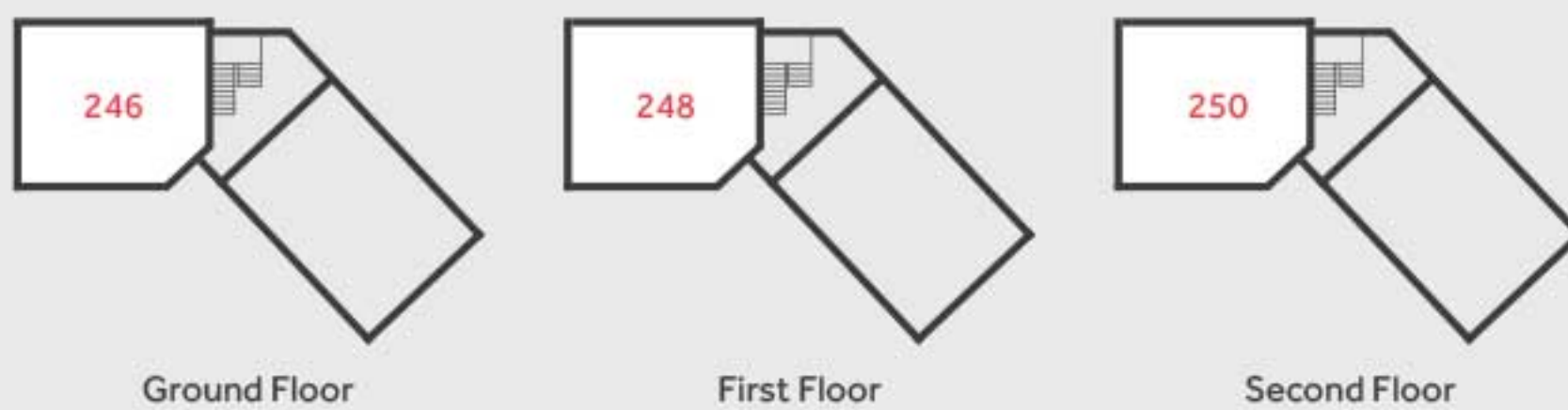
Bedroom 1

4.25m x 2.74m 13'10" x 8'10"

Bedroom 2

3.82m x 2.65m 12'6" x 8'8"

*Juliet balconies to Dining Area and Bedroom 2 on 1st floor. Window replaces door to Living Area on 1st and 2nd floors.



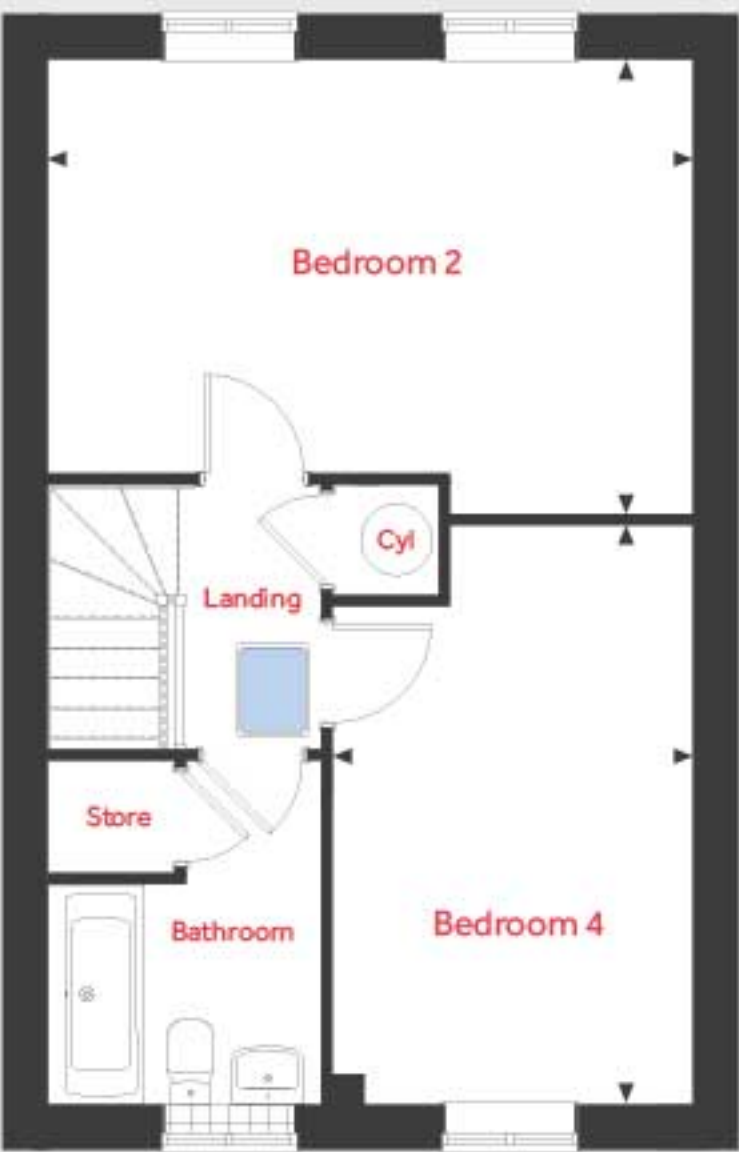
ovn	oven	cyl	hot water cylinder
h	hob	w	wardrobe
dw	dishwasher	cup'd	cupboard
wm	washing machine	◀ ▶	measuring points
ffzr	fridge freezer		

Please note, floorplans and dimensions are taken from architectural drawings and are for guidance only. Dimensions stated are within a tolerance of plus or minus 50mm. Overall dimensions are usually stated and there may be projections into these. With our continual improvement policy we constantly review our designs and specification to ensure we deliver the best product to our customers. Computer generated images not to scale. Finishes and materials may vary and landscaping is illustrative only. Kitchen layouts are indicative only and may change. To confirm specific details on our homes please ask your Sales Executive. LINW121/August 2020.

Linden
HOMES



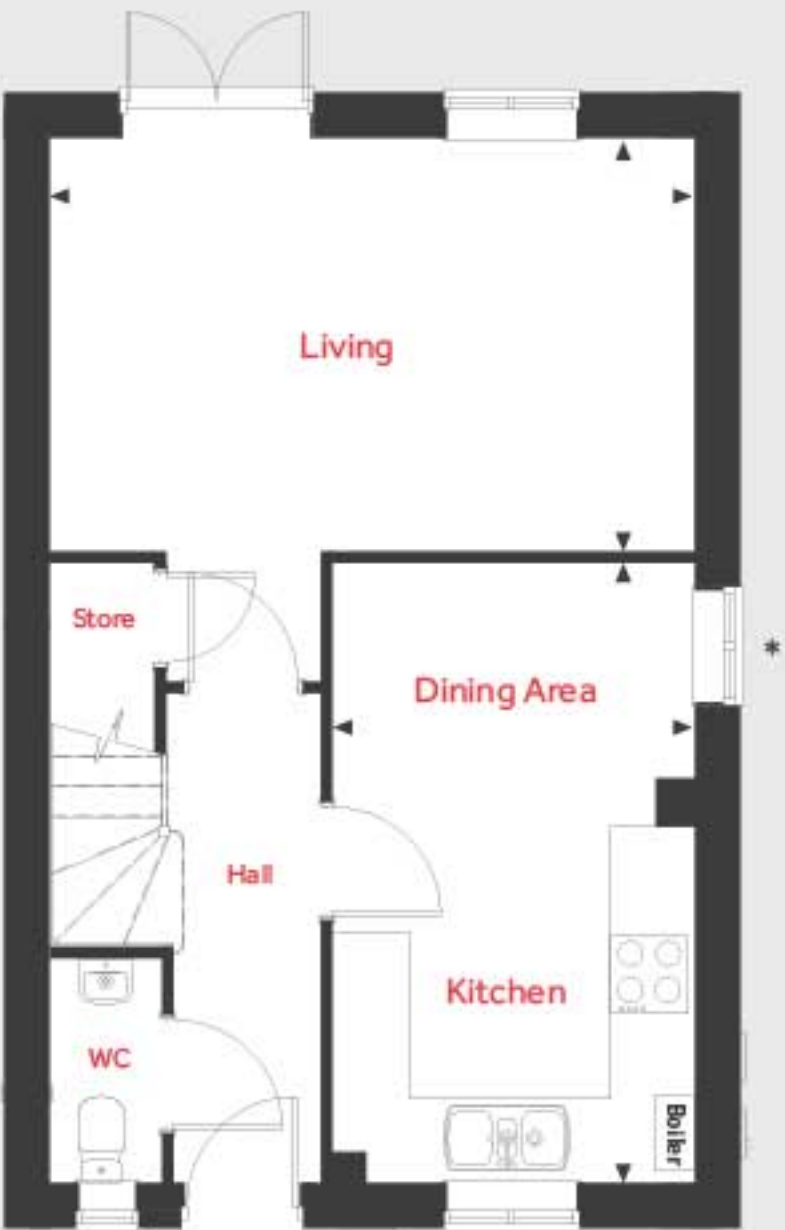
Second Floor



First Floor



Ground Floor



The Burnet

4 bedroom home

Plots 21, 22, 25, 26, 27, 28, 53, 54, 59, 60, 116, 117, 119, 195, 196, 197, 198, 218, 219

Ground Floor

Kitchen/Dining Area
4.78m x 2.80m 15'8" x 9'2"
Living
4.98m x 3.19m 16'4" x 10'5"

First Floor

Bedroom 1
4.98m x 3.67m 16'4" x 12'0"
Bedroom 3
4.98m x 2.78m 16'4" x 9'1"

Second Floor

Bedroom 2
4.98m x 3.50m 16'4" x 11'6"
Bedroom 4
4.47m x 2.78m 14'8" x 9'1"

*Window to plots 21, 22, 25-28, 53, 54, 59, 60, 116, 117 and 197 only

ovn	oven	cyl	hot water cylinder
h	hob	w	wardrobe
dw	dishwasher	cup'd	cupboard
wm	washing machine	◀ ▶	measuring points
ffzr	fridge freezer		

Please note, floorplans and dimensions are taken from architectural drawings and are for guidance only. Dimensions stated are within a tolerance of plus or minus 50mm. Overall dimensions are usually stated and there may be projections into these. With our continual improvement policy we constantly review our designs and specification to ensure we deliver the best product to our customers. Computer generated images not to scale. Finishes and materials may vary and landscaping is illustrative only. Kitchen layouts are indicative only and may change. To confirm specific details on our homes please ask your Sales Executive. LINW121/August 2020.



The Eveleigh 3 bedroom home

Plots 3, 14, 15, 17, 29, 31, 32, 48, 94, 95, 216, 233, 235, 257, 259, 268, 270, 274, 275, 292, 295

Spinnaker

Station Approach, Westbury BA13 4HP | 01373 441 689

lindenhomes.co.uk

Linden
HOMES

The Eveleigh

3 bedroom home

Plots 3, 14, 15, 17, 29, 31, 32, 48, 94, 95, 216, 233, 235, 257, 259, 268, 270, 274, 275, 292, 295

First Floor



Ground Floor

Kitchen/Dining Area

4.78m x 2.80m 15'8" x 9'2"

Living

4.98m x 3.19m 16'4" x 10'5"

First Floor

Bedroom 1

2.77m x 2.71m 9'1" x 8'10"

Bedroom 2

2.88m x 2.77m 9'5" x 9'1"

Bedroom 3

3.19m x 2.12m 10'5" x 6'11"

*Window to plots 17, 29, 48, 216, 233 and 269 only

Ground Floor



ovn	oven	cyl	hot water cylinder
h	hob	w	wardrobe
dw	dishwasher	cup'd	cupboard
wm	washing machine	◀ ▶	measuring points
ffzr	fridge freezer		

Please note, floorplans and dimensions are taken from architectural drawings and are for guidance only. Dimensions stated are within a tolerance of plus or minus 50mm. Overall dimensions are usually stated and there may be projections into these. With our continual improvement policy we constantly review our designs and specification to ensure we deliver the best product to our customers. Computer generated images not to scale. Finishes and materials may vary and landscaping is illustrative only. Kitchen layouts are indicative only and may change. To confirm specific details on our homes please ask your Sales Executive. LINW121/August 2020.

Linden
HOMES



The Goodridge 4 bedroom home

Plots 62, 85, 139, 140

Spinnaker

Station Approach, Westbury BA13 4HP | 01373 441 689

lindenhomes.co.uk

Linden
HOMES

The Goodridge

4 bedroom home

Plots 62, 85, 139, 140

First Floor



Ground Floor

Kitchen/Dining Area

5.72m x 2.96m 18'9" x 9'8"

Living

4.73m x 3.42m 15'6" x 11'2"

First Floor

Bedroom 1

4.10m x 2.98m 13'5" x 9'9"

Bedroom 2

3.42m x 2.98m 11'2" x 9'9"

Bedroom 3

4.36m x 2.50m 14'3" x 8'2"

Bedroom 4

3.16m x 2.50m 10'4" x 8'2"

Ground Floor



ovn	oven	cyl	hot water cylinder
h	hob	w	wardrobe
dw	dishwasher	cup'd	cupboard
wm	washing machine	◀ ▶	measuring points
ffzr	fridge freezer		

Please note, floorplans and dimensions are taken from architectural drawings and are for guidance only. Dimensions stated are within a tolerance of plus or minus 50mm. Overall dimensions are usually stated and there may be projections into these. With our continual improvement policy we constantly review our designs and specification to ensure we deliver the best product to our customers. Computer generated images not to scale. Finishes and materials may vary and landscaping is illustrative only. Kitchen layouts are indicative only and may change. To confirm specific details on our homes please ask your Sales Executive. LINW121/August 2020.

Linden
HOMES



The Harcourt

2 bedroom home

Plots 10, 11, 30, 41, 42, 49, 87, 88, 89, 90, 215, 234, 258, 265, 260, 269,293, 294

First Floor



Ground Floor

Kitchen/Dining Area

4.56m x 1.99m 14'11" x 6'6"

Living

4.08m x 2.74m 13'4" x 8'11"

First Floor

Bedroom 1

4.08m x 2.83m 13'4" x 9'3"

Bedroom 2

4.08m x 2.40m 13'4" x 7'10"

*Window to plots 87-90 only

Ground Floor



ovn	oven	cyl	hot water cylinder
h	hob	w	wardrobe
dw	dishwasher	cup'd	cupboard
wm	washing machine	◀ ▶	measuring points
ffzr	fridge freezer		

Please note, floorplans and dimensions are taken from architectural drawings and are for guidance only. Dimensions stated are within a tolerance of plus or minus 50mm. Overall dimensions are usually stated and there may be projections into these. With our continual improvement policy we constantly review our designs and specification to ensure we deliver the best product to our customers. Computer generated images not to scale. Finishes and materials may vary and landscaping is illustrative only. Kitchen layouts are indicative only and may change. To confirm specific details on our homes please ask your Sales Executive. LINW121/August 2020.

Linden
HOMES



The Heywood 3 bedroom home

Plots 44, 45, 103, 104, 135, 136, 137, 187, 188, 189, 203, 211, 212, 220, 221

Spinnaker

Station Approach, Westbury BA13 4HP | 01373 441 689

lindenhomes.co.uk

Linden
HOMES

Second Floor



First Floor



Ground Floor



The Heywood

3 bedroom home

Plots 44, 45, 103, 104, 135, 136, 137, 187, 188, 189, 203, 211, 212, 220, 221

Ground Floor

Kitchen/Dining Area
4.81m x 2.61m 15'9" x 8'6"
Living
4.92m x 3.39m 16'2" x 11'1"

First Floor

Bedroom 2
4.92m x 3.16m 16'2" x 10'4"
Bedroom 3
3.91m x 2.66m 12'10" x 8'9"

Second Floor

Bedroom 1
6.14m x 3.80m 20'2" x 12'6"

*Window to plot 104 only

ovn	oven	cyl	hot water cylinder
h	hob	w	wardrobe
dw	dishwasher	cup'd	cupboard
wm	washing machine	◀ ▶	measuring points
ffzr	fridge freezer		

Please note, floorplans and dimensions are taken from architectural drawings and are for guidance only. Dimensions stated are within a tolerance of plus or minus 50mm. Overall dimensions are usually stated and there may be projections into these. With our continual improvement policy we constantly review our designs and specification to ensure we deliver the best product to our customers. Computer generated images not to scale. Finishes and materials may vary and landscaping is illustrative only. Kitchen layouts are indicative only and may change. To confirm specific details on our homes please ask your Sales Executive. LINW121/August 2020.



The Kempthorne 4 bedroom home

Plots 6, 63, 69, 75, 76, 82, 84, 86, 177, 279, 280, 286, 288, 291

Spinnaker

Station Approach, Westbury BA13 4HP | 01373 441 689

lindenhomes.co.uk

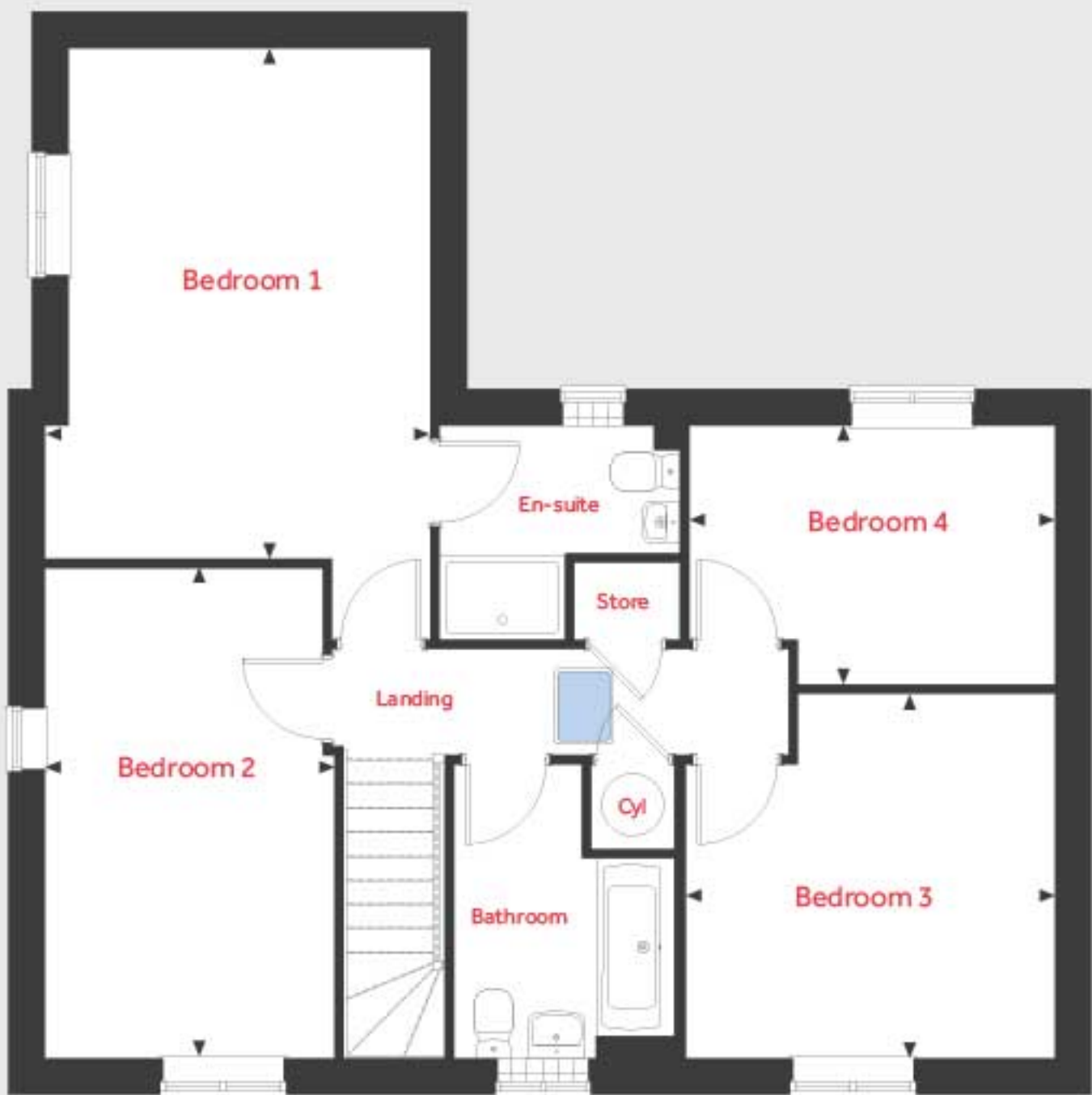
Linden
HOMES

The Kempthorne

4 bedroom home

Plots 6, 63, 69, 75, 76, 82, 84, 86, 177, 279, 280, 286, 288, 291

First Floor



Ground Floor



Ground Floor

Kitchen/Dining Area

5.57m x 3.67m 18'3" x 12'0"

Living

6.04m x 3.85m 19'9" x 12'7"

Dining Area/Study

2.76m x 2.56m 9'0" x 8'4"

First Floor

Bedroom 1

4.87m x 3.45m 15'11" x 11'3"

Bedroom 2

4.67m x 2.76m 15'4" x 9'0"

Bedroom 3

3.52m x 3.48m 11'6" x 11'5"

Bedroom 4

3.49m x 2.47m 11'5" x 8'1"

ovn	oven	cyl	hot water cylinder
h	hob	w	wardrobe
dw	dishwasher	cup'd	cupboard
wm	washing machine	< >	measuring points
ffzr	fridge freezer		

Please note, floorplans and dimensions are taken from architectural drawings and are for guidance only. Dimensions stated are within a tolerance of plus or minus 50mm. Overall dimensions are usually stated and there may be projections into these. With our continual improvement policy we constantly review our designs and specification to ensure we deliver the best product to our customers. Computer generated images not to scale. Finishes and materials may vary and landscaping is illustrative only. Kitchen layouts are indicative only and may change. To confirm specific details on our homes please ask your Sales Executive. LINW121/August 2020.

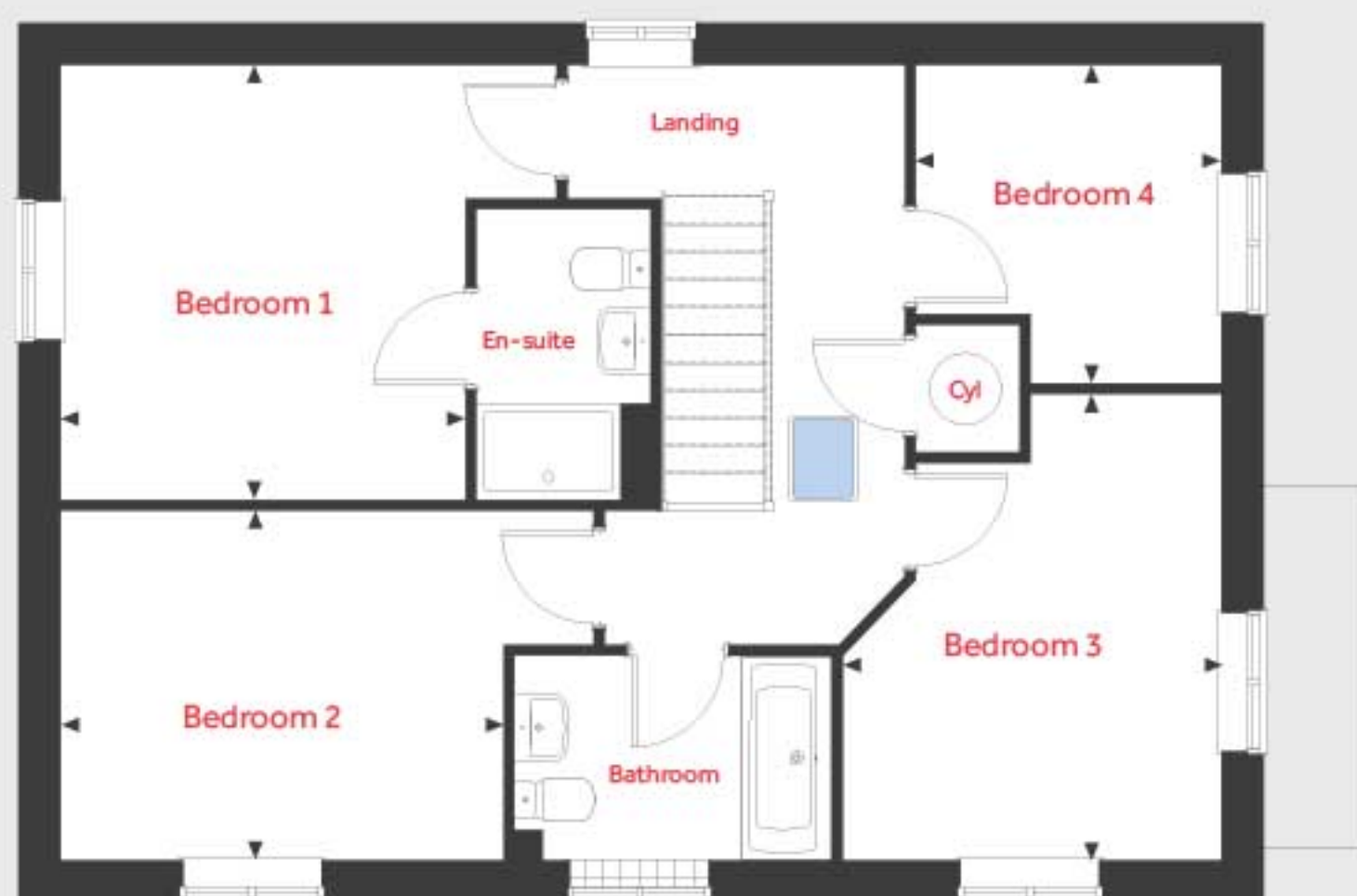
Linden HOMES

The Leigh

4 bedroom home

Plots 1, 8, 16, 35, 72, 200, 201, 205, 208, 224, 260, 282, 285

First Floor



Ground Floor

Kitchen/Dining Area/Family

6.60m x 3.56m 21'7" x 11'7"

Living

6.60m x 3.59m 21'7" x 11'7"

First Floor

Bedroom 1

3.61m x 3.36m 11'8" x 11'0"

Bedroom 2

3.60m x 2.90m 11'8" x 9'5"

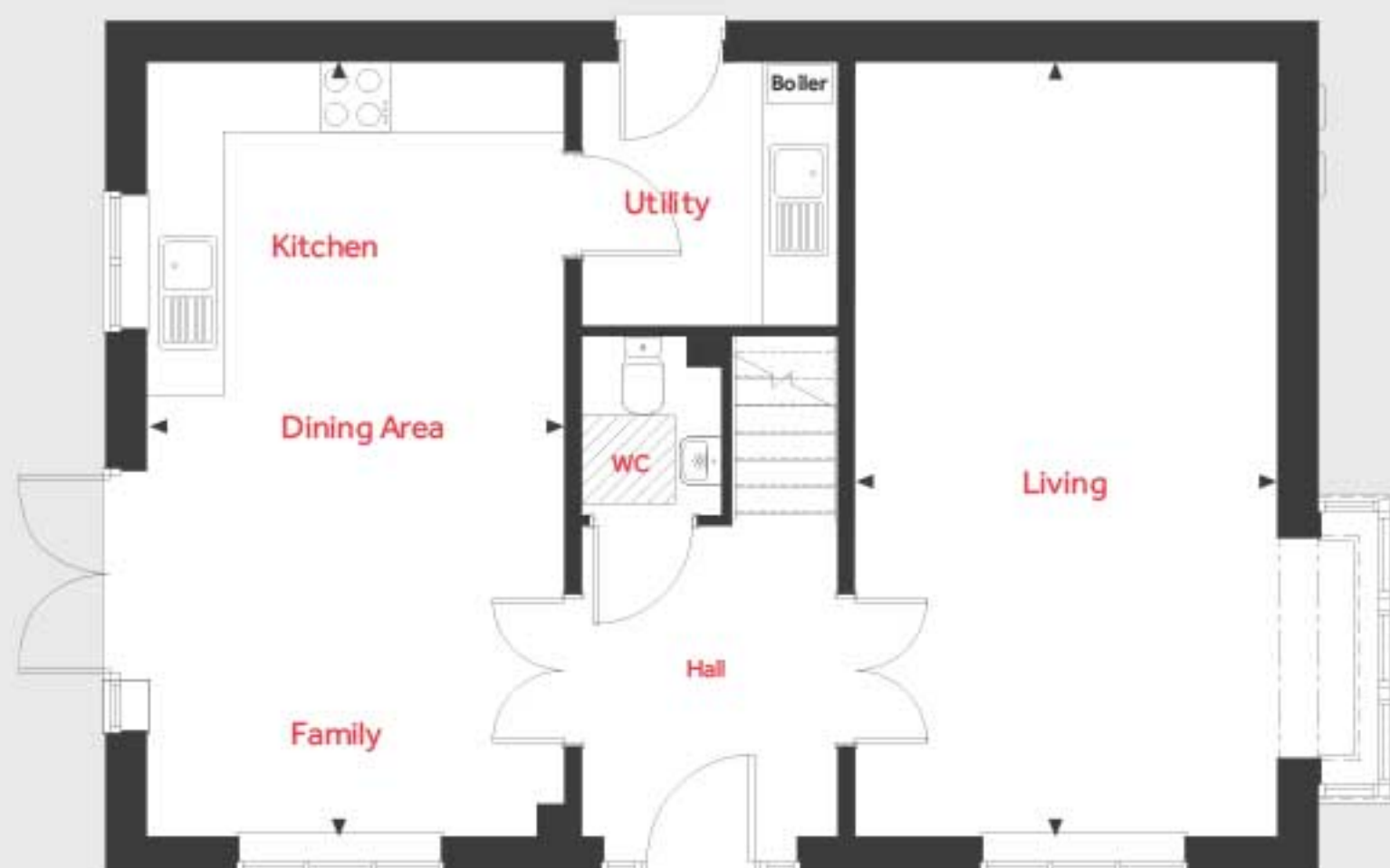
Bedroom 3

3.14m x 2.50m 10'3" x 8'2"

Bedroom 4

2.64m x 2.54m 8'6" x 8'2"

Ground Floor



ovn	oven	cyl	hot water cylinder
h	hob	w	wardrobe
dw	dishwasher	cup'd	cupboard
wm	washing machine	◀ ▶	measuring points
ffzr	fridge freezer		

Please note, floorplans and dimensions are taken from architectural drawings and are for guidance only. Dimensions stated are within a tolerance of plus or minus 50mm. Overall dimensions are usually stated and there may be projections into these. With our continual improvement policy we constantly review our designs and specification to ensure we deliver the best product to our customers. Computer generated images not to scale. Finishes and materials may vary and landscaping is illustrative only. Kitchen layouts are indicative only and may change. To confirm specific details on our homes please ask your Sales Executive. LINW121/August 2029.

Linden

HOMES



The Leverton 4 bedroom home

Plots 68, 70, 71, 79, 83, 93, 98, 106, 133, 165, 185, 190, 230, 298

Spinnaker

Station Approach, Westbury BA13 4HP | 01373 441 689

lindenhomes.co.uk

Linden
HOMES

The Leverton

4 bedroom home

Plots 68, 70, 71, 79, 83, 93, 98, 106, 133, 165, 185, 190, 230, 298

First Floor



Ground Floor

Kitchen

3.22m x 2.80m 10'7" x 9'2"

Dining Area

3.91m x 2.81m 12'10" x 9'2"

Living

4.80m x 3.39m 15'9" x 11'1"

Study

3.39m x 1.82m 11'1" x 5'11"

First Floor

Bedroom 1

4.39m x 3.47m 14'4" x 11'4"

Bedroom 2

3.58m x 3.15m 11'9" x 10'4"

Bedroom 3

3.36m x 2.87m 11'0" x 9'5"

Bedroom 4

3.26m x 2.07m 10'8" x 6'9"

Ground Floor



ovn	oven	cyl	hot water cylinder
h	hob	w	wardrobe
dw	dishwasher	cup'd	cupboard
wm	washing machine	◀ ▶	measuring points
ffzr	fridge freezer		

Please note, floorplans and dimensions are taken from architectural drawings and are for guidance only. Dimensions stated are within a tolerance of plus or minus 50mm. Overall dimensions are usually stated and there may be projections into these. With our continual improvement policy we constantly review our designs and specification to ensure we deliver the best product to our customers. Computer generated images not to scale. Finishes and materials may vary and landscaping is illustrative only. Kitchen layouts are indicative only and may change. To confirm specific details on our homes please ask your Sales Executive. LINW121/August 2020.

Linden
HOMES



The Mountford 3 bedroom home

Plots 13, 18, 33, 50, 57, 61, 91, 138, 186, 213, 263, 264

Spinnaker

Station Approach, Westbury BA13 4HP | 01373 441 689

lindenhomes.co.uk

Linden
HOMES

The Mountford

3 bedroom home

Plots 13, 18, 33, 50, 57, 61, 91,
138, 186, 213, 263, 264

First Floor



Ground Floor



Ground Floor

Kitchen/Dining Area

5.59m x 2.67m 18'4" x 8'9"

Living

5.59m x 3.11m 18'4" x 10'2"

First Floor

Bedroom 1

3.35m x 3.17m 11'0" x 10'5"

Bedroom 2

3.13m x 2.73m 10'3" x 8'11"

Bedroom 3

2.76m x 2.76m 9'0" x 9'0"

*Boiler located in Kitchen if semi-detached or
Utility if detached

**No door to plots 13, 18, 33, 50 and 264 only

ovn	oven	cyl	hot water cylinder
h	hob	w	wardrobe
dw	dishwasher	cup'd	cupboard
wm	washing machine	◀ ▶	measuring points
ffzr	fridge freezer		

Please note, floorplans and dimensions are taken from architectural drawings and are for guidance only. Dimensions stated are within a tolerance of plus or minus 50mm. Overall dimensions are usually stated and there may be projections into these. With our continual improvement policy we constantly review our designs and specification to ensure we deliver the best product to our customers. Computer generated images not to scale. Finishes and materials may vary and landscaping is illustrative only. Kitchen layouts are indicative only and may change. To confirm specific details on our homes please ask your Sales Executive. LINW121/August 2020.

Linden
HOMES



The Mylne 4 bedroom home

Plots 2, 7, 58, 66, 67, 77, 78, 92, 96, 227, 261, 262, 283, 284, 290

Spinnaker

Station Approach, Westbury BA13 4HP | 01373 441 689

lindenhomes.co.uk

Linden
HOMES

The Mylne

4 bedroom home

Plots 2, 7, 58, 66, 67, 77, 78, 92, 96, 227, 261, 262, 283, 284, 290

First Floor



Ground Floor

Kitchen/Dining Area

6.04m x 4.37m 19'9" x 14'4"

Living

4.83m x 3.39m 15'10" x 11'1"

First Floor

Bedroom 1

3.93m x 3.45m 12'11" x 11'3"

Bedroom 2

3.20m x 2.44m 10'6" x 8'0"

Bedroom 3

3.51m x 2.15m 11'6" x 7'0"

Bedroom 4

3.10m x 2.90m 10'2" x 9'6"

Ground Floor



ovn	oven	cyl	hot water cylinder
h	hob	w	wardrobe
dw	dishwasher	cup'd	cupboard
wm	washing machine	◀ ▶	measuring points
ffzr	fridge freezer		

Please note, floorplans and dimensions are taken from architectural drawings and are for guidance only. Dimensions stated are within a tolerance of plus or minus 50mm. Overall dimensions are usually stated and there may be projections into these. With our continual improvement policy we constantly review our designs and specification to ensure we deliver the best product to our customers. Computer generated images not to scale. Finishes and materials may vary and landscaping is illustrative only. Kitchen layouts are indicative only and may change. To confirm specific details on our homes please ask your Sales Executive. LINW121/August 2020.

Linden
HOMES



The Pembroke 4 bedroom home

Plots 5, 46, 64, 65, 73, 74, 80, 81, 97, 281, 287, 289, 296, 297

Spinnaker

Station Approach, Westbury BA13 4HP | 01373 441 689

lindenhomes.co.uk

Linden
HOMES

The Pembroke

4 bedroom home

Plots 5, 46, 64, 65, 73, 74, 80, 81, 97, 281, 287, 289, 296, 297

First Floor



Ground Floor



Ground Floor

Kitchen/Dining Area

8.06m x 3.34m 26'5" x 10'11"

Living

4.83m x 3.48m 15'10" x 11'5"

Study

2.40m x 2.35m 7'10" x 7'8"

First Floor

Bedroom 1

4.29m x 3.38m 14'1" x 11'1"

Bedroom 2

3.71m x 3.48m 12'2" x 11'5"

Bedroom 3

3.34m x 2.86m 10'11" x 9'4"

Bedroom 4

3.92m x 2.82m 12'10" x 9'3"

ovn	oven	cyl	hot water cylinder
h	hob	w	wardrobe
dw	dishwasher	cup'd	cupboard
wm	washing machine	◀ ▶	measuring points
ffzr	fridge freezer		

Please note, floorplans and dimensions are taken from architectural drawings and are for guidance only. Dimensions stated are within a tolerance of plus or minus 50mm. Overall dimensions are usually stated and there may be projections into these. With our continual improvement policy we constantly review our designs and specification to ensure we deliver the best product to our customers. Computer generated images not to scale. Finishes and materials may vary and landscaping is illustrative only. Kitchen layouts are indicative only and may change. To confirm specific details on our homes please ask your Sales Executive. LINW121/August 2020.

Linden
HOMES



Specification

We give you so much more

Spinnaker

Station Approach, Westbury BA13 4HP | 01373 441 689

lindenhomes.co.uk

Linden
HOMES

Specification

We give you so much more

Each home will be independently surveyed during construction by Premier Guarantee, who will issue their 10 year warranty certficate on completion of the home.

	2 bedroom homes	3 bedroom homes	4 bedroom semi-detached homes	4 bedroom detached homes
Kitchen				
Fitted kitchen with laminate worktop and upstand	■	■	■	■
Stainless steel single undercounter oven	■	■	■	
Stainless steel double undercounter oven				■
Stainless steel gas hob	■	■	■	■
Integrated extractor hood	■	■		
Stainless steel chimney extractor hood			■	■
Integrated fridge freezer				■
Space for dishwasher and washing machine with plumbing and electrical supply	■	■	■	■
Single bowl stainless steel sink with mixer tap	■	■	■	
1½ bowl stainless steel sink with mixer tap				■
Ceiling light fitting with track spotlights	■	■		■

Bathrooms, en suites and cloakrooms				
Contemporary white sanitaryware and chrome fittings	■	■	■	■
Half height tiling above bath	■	■	■	■
Full height tiling above bath shower and in shower enclosure	■	■	■	■
Splashback tiling above basin	■	■	■	■

Electrical				
TV and BT telephone points to service cupboard, living room and family room	■	■		
TV and BT telephone points to service cupboard and living room			■	■
White pendant lamps (except kitchen & bathroom) including low energy fittings	■	■	■	■
White plastic switchplates and sockets	■	■	■	■

Internal finishes				
Walls and ceilings in white supermatt emulsion	■	■	■	■
Internal woodwork in gloss white	■	■	■	■
Oak finish internal doors with chrome ironmongery	■	■	■	■
Softwood/Redwood/MDF staircase and handrails painted white	■	■	■	■

Heating				
Gas fired system boiler with cylinder				■
Gas combi boiler	■	■	■	

General				
Part glazed GRP composite front doors with 3 point locking system (except apartments)	■	■	■	■
Low energy external lantern light to front door	■	■	■	■
Lighting to footpaths and parking courts controlled by dusk to dawn sensors	■	■	■	■

Peace of mind

Each home will be independently surveyed during construction by the NHBC, who will issue their 10 year warranty certificate on completion of the home.

Mendelen ientem faci sam rehent aceperenda nate a sequosant odis eos vid quis acepreiciis volorro expeditern venis aut destota tiaecae est volorit maio quam qui tem excerferum ipsus, sitasinciis eriberum volorest, tendis quam fugiatqui reri suntion senihitin et, cullacerum quiatur Ebiscium que volenis am fugiati ommolore commod que et porerum quassim iliquam is reprere ipiciae pa que eosae plignis re dit ullab ius si omnis a autem quodis re ne earundantia cus molore maiorectatus ab in ressimus si doloreium res mo excepta temporem videbis tibusae pore, simagnis aut facil in et asperio rrovidentur abo. Gia site vollend itatur? Sum sitatur?

Andae poreria sitiati. Peremquam vent eossit fugiat qui ut maisonsectus idus verepratrem hictotatem eos exeribustio maxim name volecep elique volupta poreiciis excepellacea delique moluptae. Itibus imoluptae conet quia et aut aut magnist, culparcil eat eum res et dolenim oluptasimus eum sam arcu alignim inctiunt