



## Gibson House 1, 2 & 3 bedroom apartments

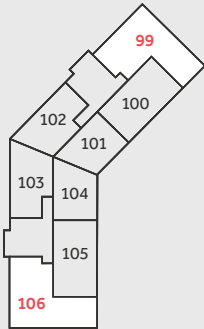
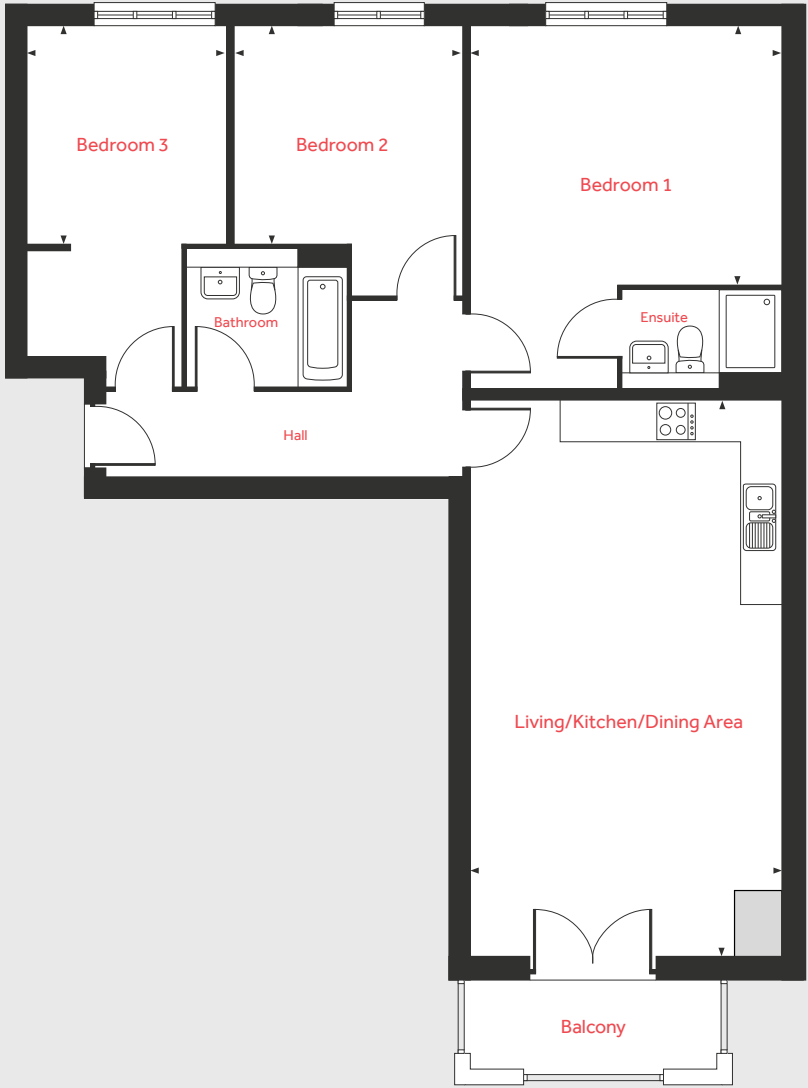
Porthgwari

Penzance TR18 3QW | 01736 664990

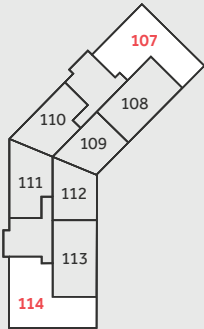
[lindenhomes.co.uk/porthgwari](https://lindenhomes.co.uk/porthgwari)

**Linden**  
HOMES

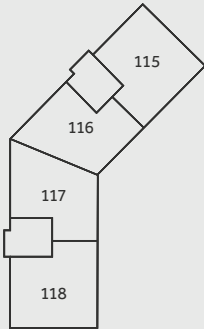
Homes 99, 106, 107 & 114



Ground Floor



First Floor



Second Floor

\*Juliette balcony to Home 106 only.  
†Window to Home 114 only.  
Homes 106 & 114 are mirror image.  
Homes 106 & 114 bathroom layouts vary from plan shown.

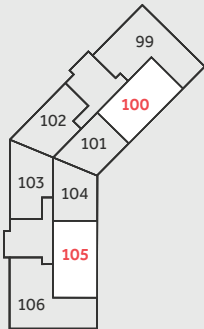
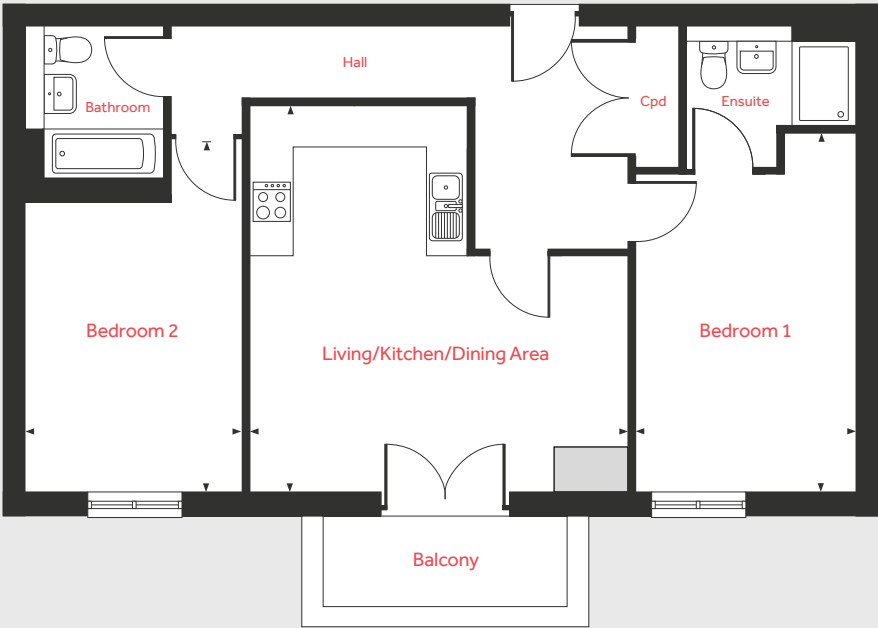
Ground Floor  
& First Floor

Homes 99, 100, 105, 106,  
107, 108, 113 & 114

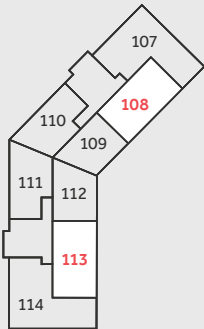
Homes 99, 106, 107 & 114		
Living/Kitchen/Dining Area		
7.98m x 4.47m	26'2" x 14'8"	
Bedroom 1		
4.47m x 3.68m	14'8" x 12'1"	
Bedroom 2		
3.25m x 3.08m	10'8" x 10'1"	
Bedroom 3		
3.08m x 2.84m	10'1" x 9'4"	

Homes 100, 105, 108 & 113		
Living/Kitchen/Dining Area		
5.48m x 5.32m	18'0" x 17'5"	
Bedroom 1		
5.08m x 3.10m	16'8" x 10'2"	
Bedroom 2		
4.95m x 3.05m	16'3" x 10'0"	

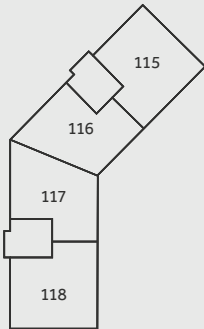
Homes 100, 105, 108 & 113



Ground Floor



First Floor



Second Floor

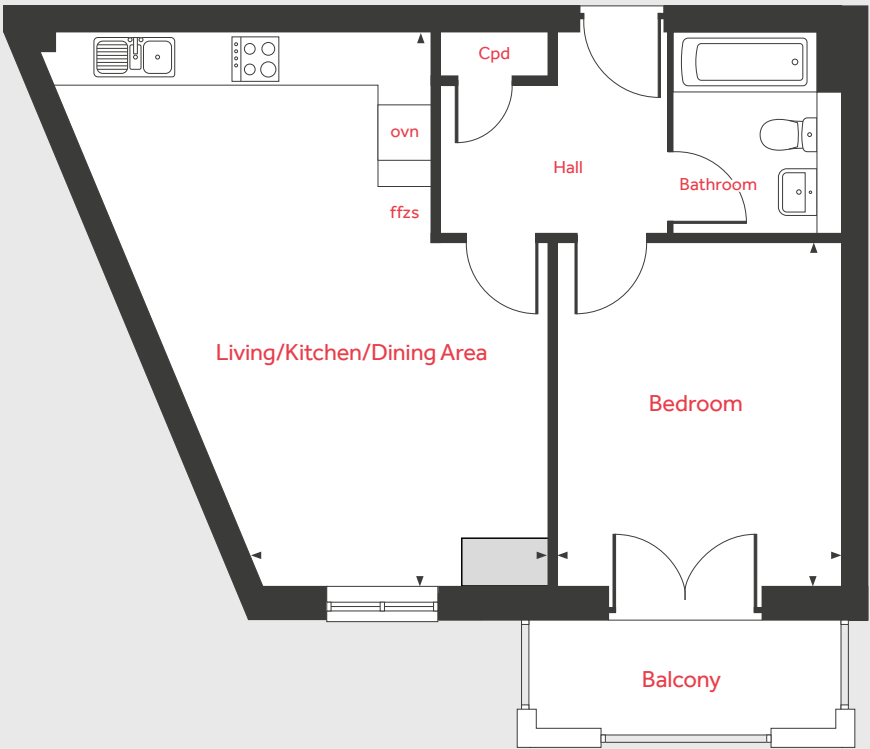
Cpd Cupboard Measuring points

Please note, floorplans and dimensions are taken from architectural drawings and are for guidance only. Dimensions stated are within a tolerance of plus or minus 50mm. Overall dimensions are usually stated and there may be projections into these. With our continual improvement policy we constantly review our designs and specification to ensure we deliver the best product to our customers. Computer generated images not to scale. Finishes and materials may vary and landscaping is illustrative only. Kitchen layouts are indicative only and may change. To confirm specific details on our homes please ask your Sales Consultant. 1584033/July 2021.

# Ground Floor & First Floor

Homes 101, 102, 103, 104, 109, 110, 111 & 112

Homes 101, 104, 109 & 112



Homes 104 & 112 are mirror image.  
Homes 104 & 112 bathroom layouts vary from plan shown.

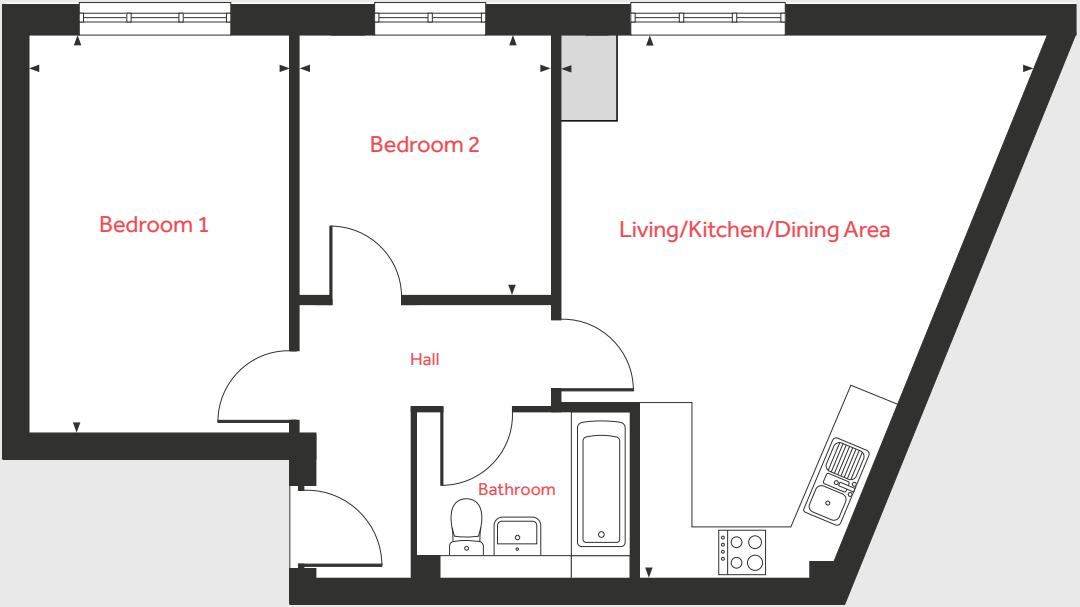
**Homes 101, 104, 109 & 112**

Living/Kitchen/Dining Area		
6.57m x 3.37m	21'7" x 11'1"	
Bedroom		
4.08m x 3.31m	13'5" x 10'10"	

**Homes 102, 103, 110 & 111**

Living/Kitchen/Dining Area		
6.42m x 5.78m	21'1" x 19'0"	
Bedroom 1		
5.61m x 3.07m	18'5" x 10'1"	
Bedroom 2		
3.08m x 2.96m	10'1" x 9'9"	

Homes 102, 103, 110 & 111

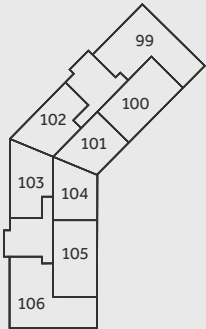
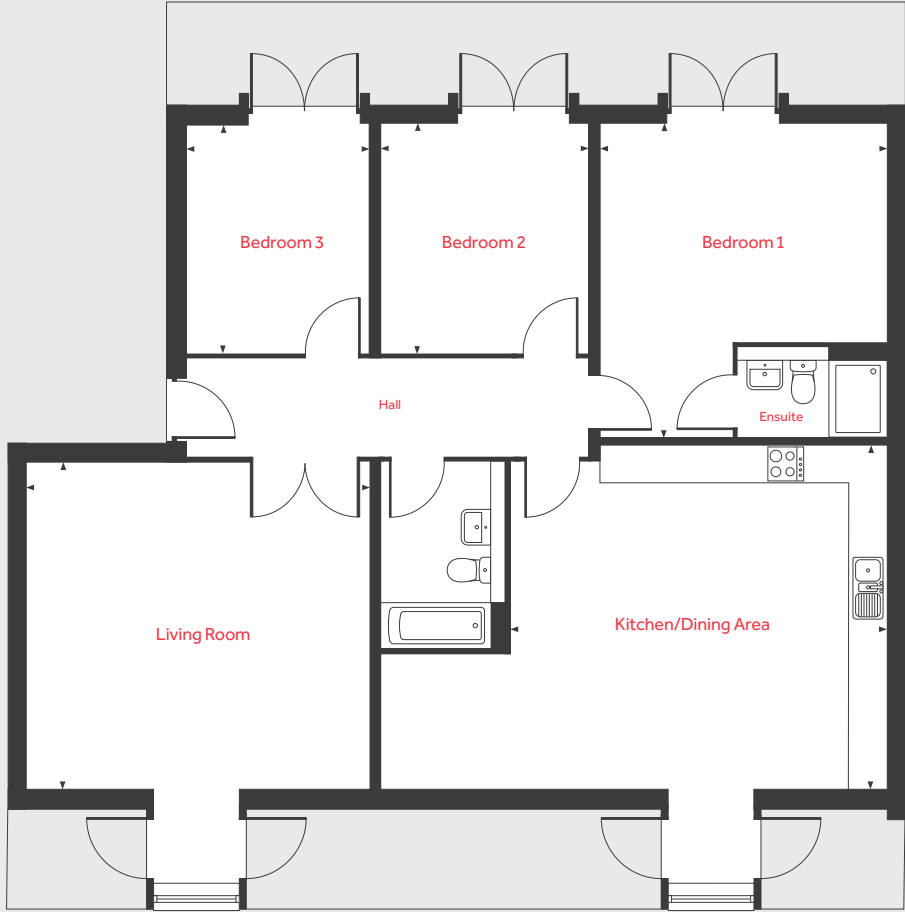


Homes 102 & 110 are mirror image.

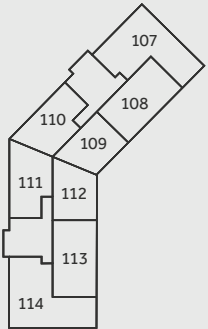
Cpd	Cupboard	ffzs	fridge freezer space
ovn	oven	◀ ▶	Measuring points

Please note, floorplans and dimensions are taken from architectural drawings and are for guidance only. Dimensions stated are within a tolerance of plus or minus 50mm. Overall dimensions are usually stated and there may be projections into these. With our continual improvement policy we constantly review our designs and specification to ensure we deliver the best product to our customers. Computer generated images not to scale. Finishes and materials may vary and landscaping is illustrative only. Kitchen layouts are indicative only and may change. To confirm specific details on our homes please ask your Sales Consultant. 1584033 DS00724 / 02.22

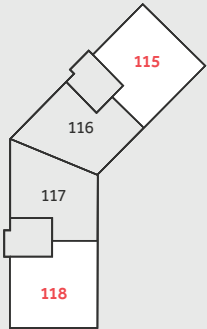
Homes 115 & 118



Ground Floor



First Floor



Second Floor

\*Window to Home 118 only.  
Homes 118 is a mirror image.

Second Floor

Homes 115, 116 & 118

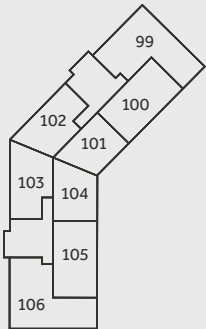
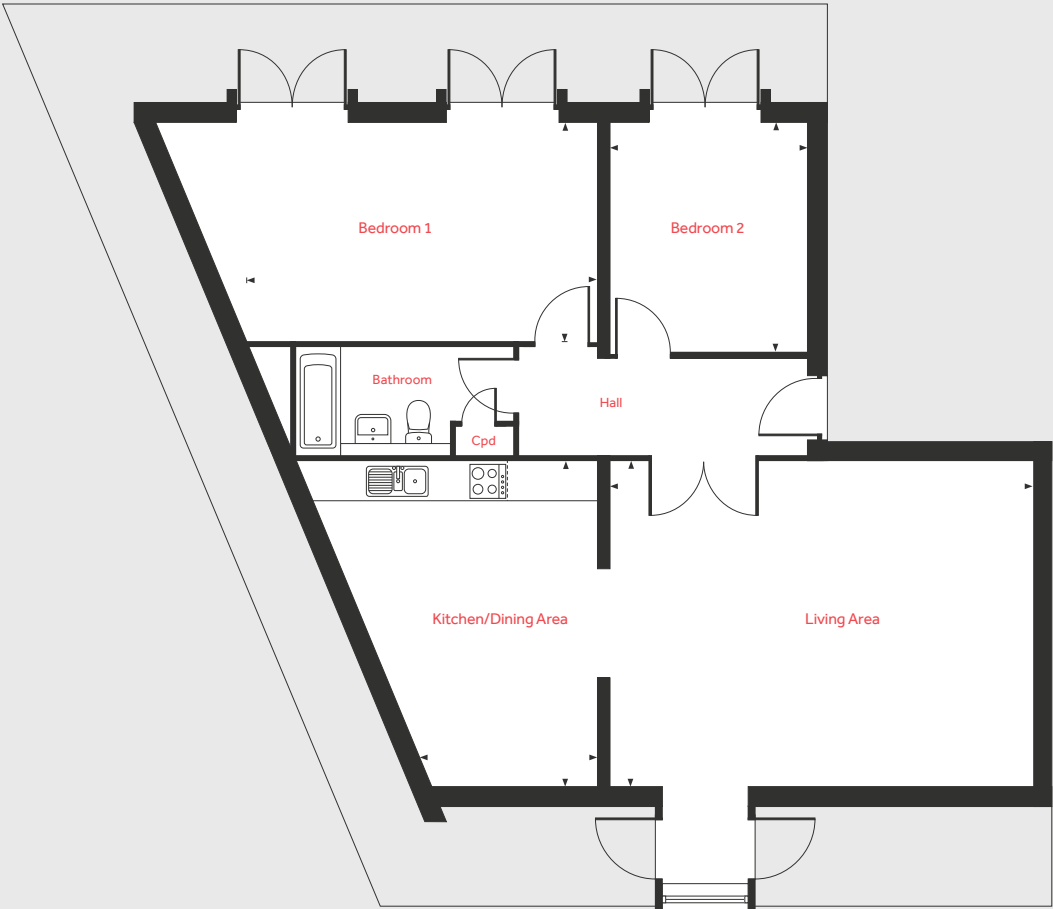
Homes 115 & 118

Living Room	5.30m x 5.08m	17'5" x 16'8"
Kitchen/Dining Area	5.85m x 5.08m	19'2" x 16'8"
Bedroom 1	4.91m x 4.45m	16'1" x 14'7"
Bedroom 2	3.57m x 3.21m	11'9" x 10'6"
Bedroom 3	3.57m x 2.82m	11'9" x 9'3"

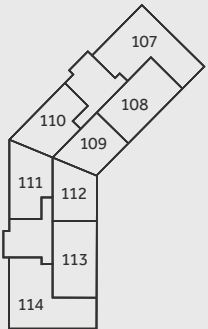
Home 116

Living Area	6.54m x 5.08m	21'5" x 16'8"
Kitchen/Dining Area	5.08m x 2.56m	16'8" x 8'5"
Bedroom 1	5.45m x 3.39m	17'11" x 11'1"
Bedroom 2	3.39m x 3.05m	11'1" x 10'0"

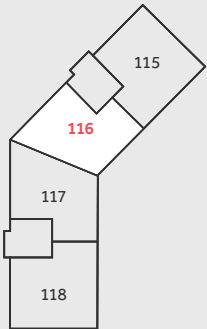
Home 116



Ground Floor



First Floor



Second Floor

Cpd Cupboard Measuring points

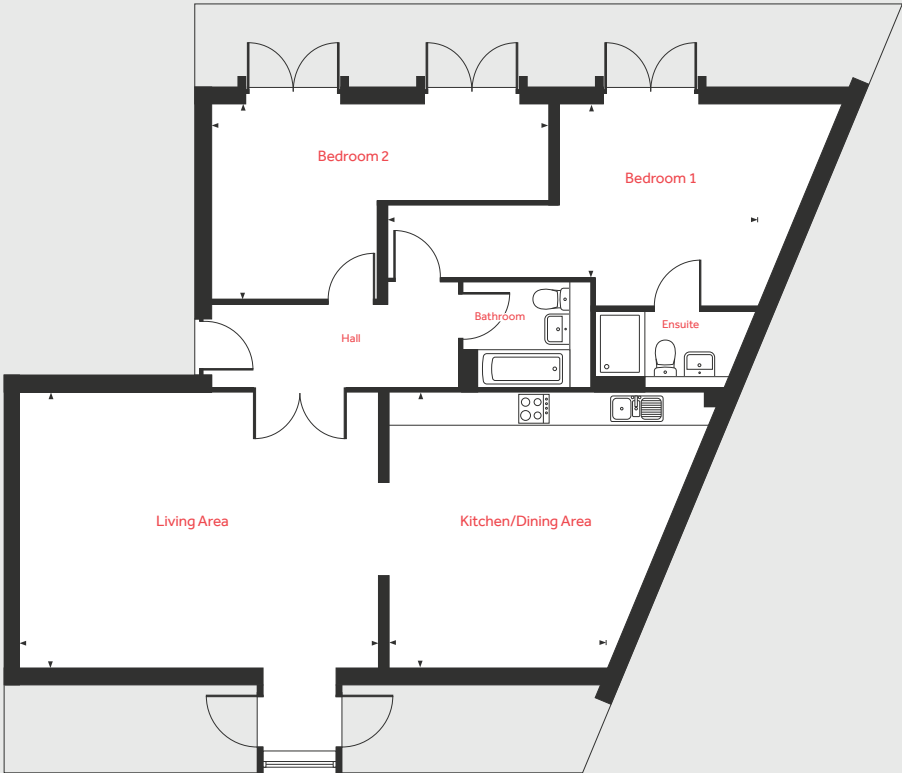
Please note, floorplans and dimensions are taken from architectural drawings and are for guidance only. Dimensions stated are within a tolerance of plus or minus 50mm. Overall dimensions are usually stated and there may be projections into these. With our continual improvement policy we constantly review our designs and specification to ensure we deliver the best product to our customers. Computer generated images not to scale. Finishes and materials may vary and landscaping is illustrative only. Kitchen layouts are indicative only and may change. To confirm specific details on our homes please ask your Sales Consultant. 1584033/July 2021.

# Gibson House

## Second Floor

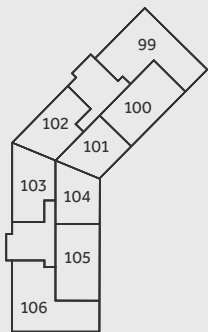
### Home 117

#### Home 117

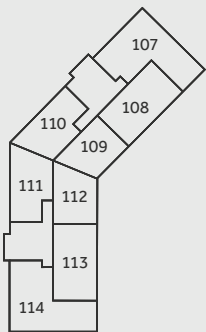


#### Home 117

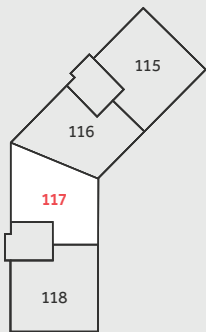
Living Area	6.54m x 5.08m	21'5" x 16'8"
Kitchen/Dining Area	5.08m x 3.97m	16'8" x 13'0"
Bedroom 1	6.73m x 3.16m	22'1" x 10'4"
Bedroom 2	6.17m x 3.57m	20'3" x 11'9"



Ground Floor



First Floor



Second Floor

◀ ▶ Measuring points

Please note, floorplans and dimensions are taken from architectural drawings and are for guidance only. Dimensions stated are within a tolerance of plus or minus 50mm. Overall dimensions are usually stated and there may be projections into these. With our continual improvement policy we constantly review our designs and specification to ensure we deliver the best product to our customers. Computer generated images not to scale. Finishes and materials may vary and landscaping is illustrative only. Kitchen layouts are indicative only and may change. To confirm specific details on our homes please ask your Sales Consultant. 1584033 DS00724 / 02.22