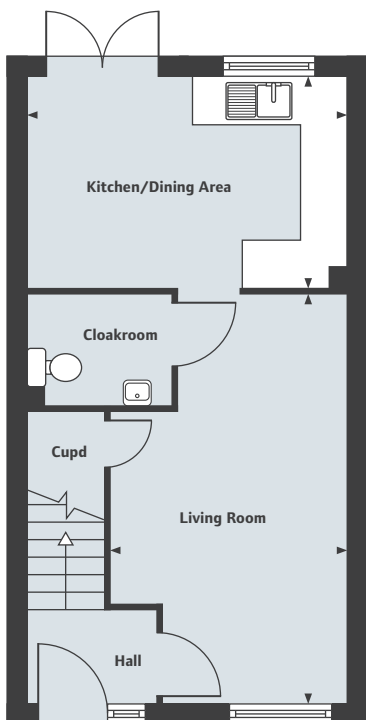




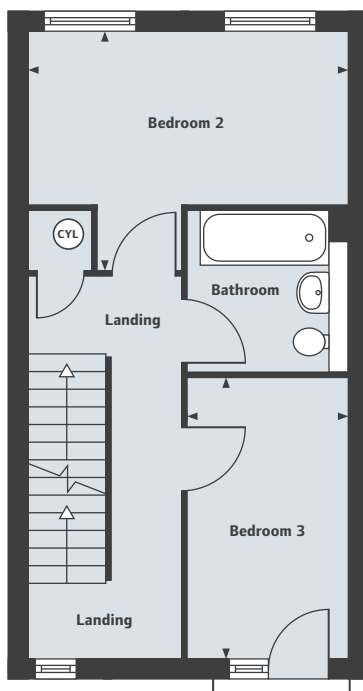
THE ACTON

3/4 bedroom home

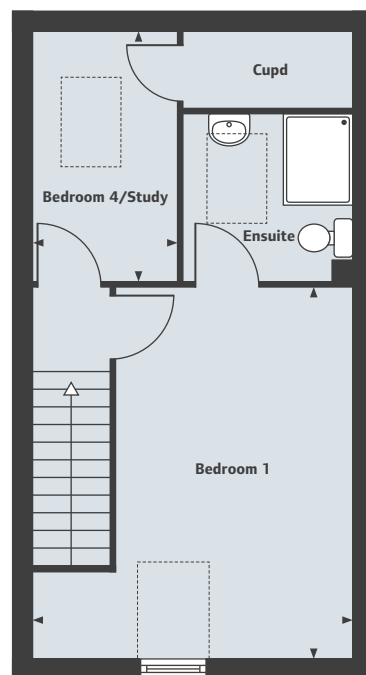




Ground Floor



First Floor



Second Floor

THE ACTON

3/4 bedroom home

Ground Floor

Living Room	5.39m x 3.13m	17'8" x 10'3"
Kitchen/Dining Area	4.21m x 2.78m	13'10" x 9'1"

First Floor

Bedroom 2	4.23m x 2.25m	13'11" x 7'5"
Bedroom 3	3.69m x 2.10m	12'1" x 6'11"

Second Floor

Bedroom 1	4.93m x 4.23m	16'2" x 13'11"
Bedroom 4/Study	3.27m x 1.91m	10'9" x 6'3"
Total Area	90 sq.m	973 sq.ft

Off Plymouth View, Brunswick, Manchester M13 9SZ

0161 8220 629

lindenhomes.co.uk/newbrunswick

Linden
HOMES

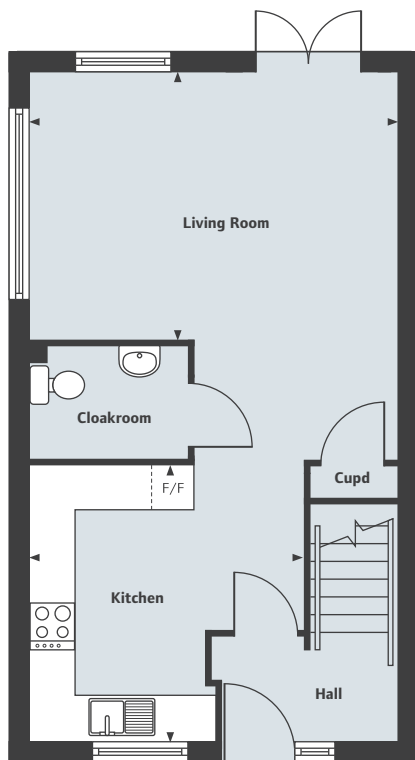
Please ask to see separate kitchen layouts. Computer generated image shown not to scale. Finishes and materials may vary from those shown on a plot by plot basis and landscaping is illustrative only. The image does not represent any contractual offer on behalf of Linden Homes. Please note that all floorplans and dimensions are taken from architectural drawings and are for guidance only – not to scale. Dimensions stated are within a tolerance of plus or minus 50mm. Overall dimensions are for reference only and should not be used for ordering carpets, furniture or similar. Please note that finishes, materials and measurements may alter slightly and are subject to change. Please ask your Sales Executive for specific details. 2081520/January 2021.



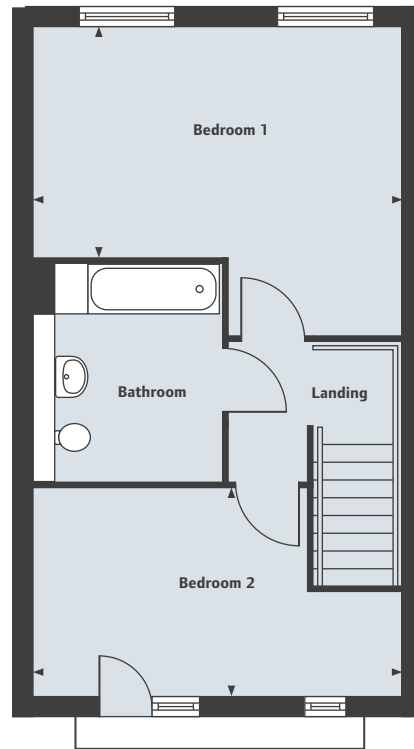
THE ASHTON

2 bedroom home





Ground Floor



First Floor

THE ASHTON

2 bedroom home

Ground Floor

Living Room	4.70m x 3.40m	15'5" x 11'2"
Kitchen	3.52m x 3.50m	11'7" x 11'6"

First Floor

Bedroom 1	4.70m x 2.95m	15'5" x 9'8"
Bedroom 2	4.70m x 2.65m	15'5" x 8'8"
Total Area	81.2 sq. m	874 sq. ft

Windows subject to plot location

Off Plymouth View, Brunswick, Manchester, M13 9SZ

0843 634 2765

lindenhomes.co.uk/newbrunswick

Linden
HOMES

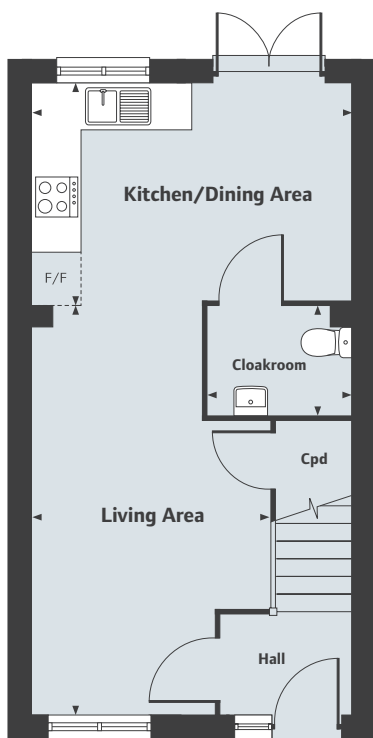
Please ask to see separate kitchen layouts. Computer generated image shown not to scale. Finishes and materials may vary from those shown on a plot by plot basis and landscaping is illustrative only. The image does not represent any contractual offer on behalf of Linden Homes. Please note that all floorplans and dimensions are taken from architectural drawings and are for guidance only – not to scale. Dimensions stated are within a tolerance of plus or minus 50mm. Overall dimensions are for reference only and should not be used for ordering carpets, furniture or similar. Please note that finishes, materials and measurements may alter slightly and are subject to change. Please ask your Sales Executive for specific details. 2081520/January 2021.



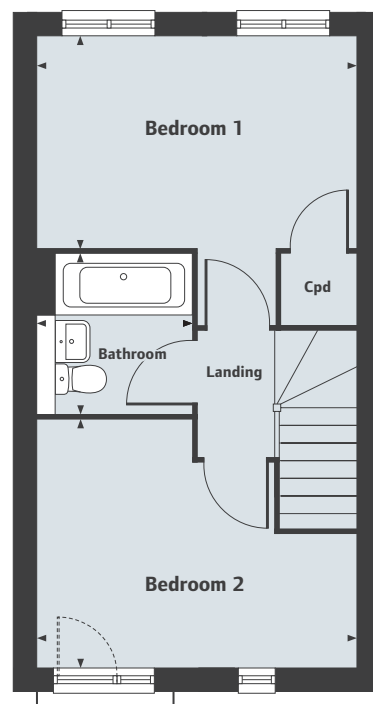
THE ASHWORTH

2 bedroom home





Ground Floor



First Floor

THE ASHWORTH

2 bedroom home

Ground Floor

Kitchen/Dining Area	4.23m x 2.80m	13'11" x 9'2"
Living Area	5.48m x 3.13m	18'0" x 10'3"
Cloakroom	1.90m x 1.45m	6'3" x 4'9"

First Floor

Bedroom 1	4.23m x 2.77m	13'11" x 9'1"
Bedroom 2	4.23m x 3.20m	13'11" x 10'6"
Bathroom	2.10m x 2.05m	6'11" x 6'9"

Off Plymouth View, Brunswick, Manchester M13 9SZ

0161 8220 629

lindenhomes.co.uk/newbrunswick

Linden
HOMES

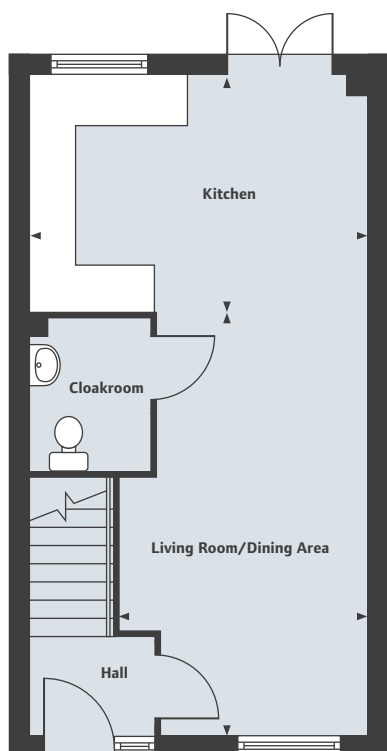
Please ask to see separate kitchen layouts. Computer generated image shown not to scale. Finishes and materials may vary from those shown on a plot by plot basis and landscaping is illustrative only. The image does not represent any contractual offer on behalf of Linden Homes. Please note that all floorplans and dimensions are taken from architectural drawings and are for guidance only – not to scale. Dimensions stated are within a tolerance of plus or minus 50mm. Overall dimensions are for reference only and should not be used for ordering carpets, furniture or similar. Please note that finishes, materials and measurements may alter slightly and are subject to change. Please ask your Sales Executive for specific details. 2081520/January 2021.



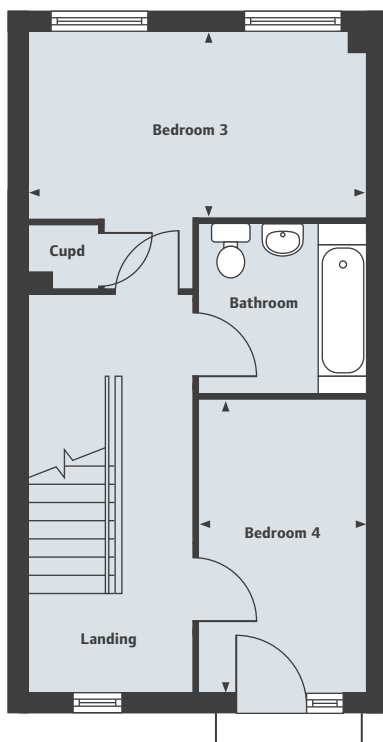
THE BEAL

4 bedroom home

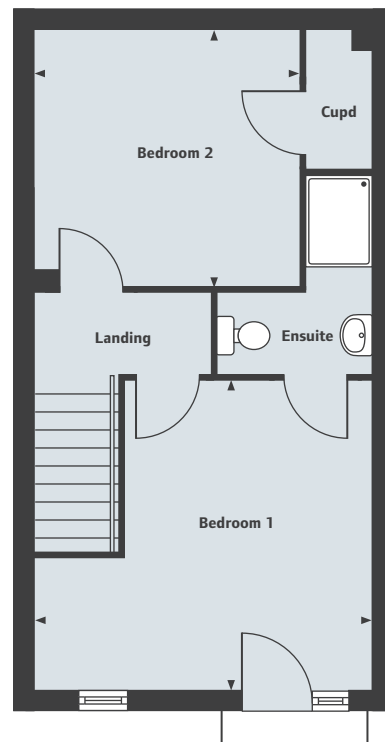




Ground Floor



First Floor



Second Floor

THE BEAL

4 bedroom home

Ground Floor

Living Room/Dining Area	5.33m x 3.16m	17'6" x 10'4"
Kitchen	4.26m x 2.95m	14'0" x 9'8"

First Floor

Bedroom 3	4.26m x 2.30m	14'0" x 7'7"
Bedroom 4	3.67m x 2.16m	12'0" x 7'1"

Second Floor

Bedroom 1	4.26m x 3.86m	14'0" x 12'8"
Bedroom 2	3.35m x 3.22m	11'0" x 10'7"
Total Area	1,076 sq. ft	100 sq. m

Off Plymouth View, Brunswick, Manchester, M13 9SZ

0843 634 2765

lindenhomes.co.uk/newbrunswick

Linden
HOMES

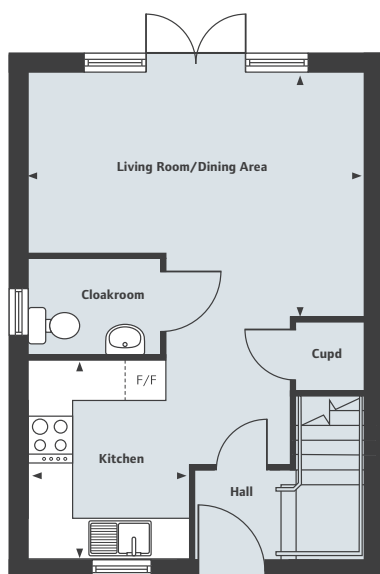
Please ask to see separate kitchen layouts. Computer generated image shown not to scale. Finishes and materials may vary from those shown on a plot by plot basis and landscaping is illustrative only. The image does not represent any contractual offer on behalf of Linden Homes. Please note that all floorplans and dimensions are taken from architectural drawings and are for guidance only – not to scale. Dimensions stated are within a tolerance of plus or minus 50mm. Overall dimensions are for reference only and should not be used for ordering carpets, furniture or similar. Please note that finishes, materials and measurements may alter slightly and are subject to change. Please ask your Sales Executive for specific details. 2081520/January 2021.



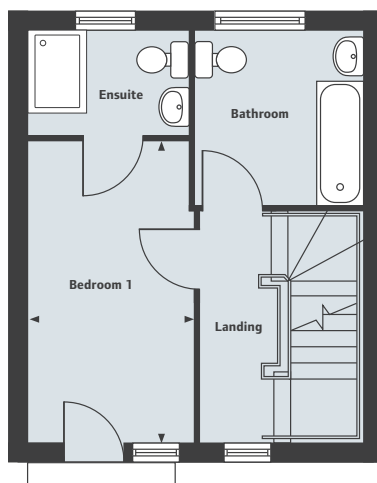
THE BESON

3 bedroom home

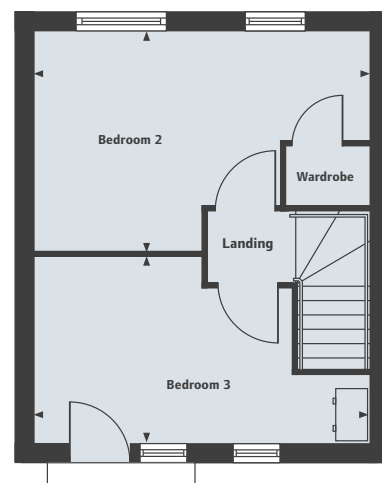




Ground Floor



First Floor



Second Floor

THE BESON

3 bedroom home

Ground Floor

Living Room/Dining Area	5.15m x 3.79m	16'10" x 12'5"
Kitchen	3.00m x 2.40m	9'10" x 7'10"

First Floor

Bedroom 1	4.66m x 2.58m	15'3" x 8'5"
-----------	---------------	--------------

Second Floor

Bedroom 2	5.15m x 3.36m	16'10" x 11'0"
Bedroom 3	5.15m x 2.90m	16'10" x 9'6"
Total Area	104 sq.m	1,123 sq.ft

Windows subject to plot location

Off Plymouth View, Brunswick, Manchester, M13 9SZ

0843 634 2765

lindenhomes.co.uk/newbrunswick

Linden
HOMES

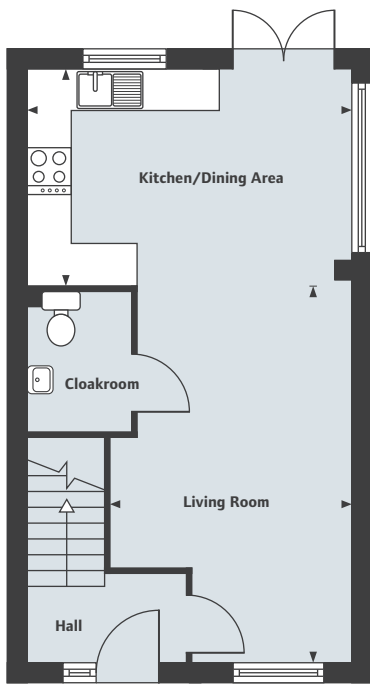
Please ask to see separate kitchen layouts. Computer generated image shown not to scale. Finishes and materials may vary from those shown on a plot by plot basis and landscaping is illustrative only. The image does not represent any contractual offer on behalf of Linden Homes. Please note that all floorplans and dimensions are taken from architectural drawings and are for guidance only – not to scale. Dimensions stated are within a tolerance of plus or minus 50mm. Overall dimensions are for reference only and should not be used for ordering carpets, furniture or similar. Please note that finishes, materials and measurements may alter slightly and are subject to change. Please ask your Sales Executive for specific details. 2081520/January 2021.



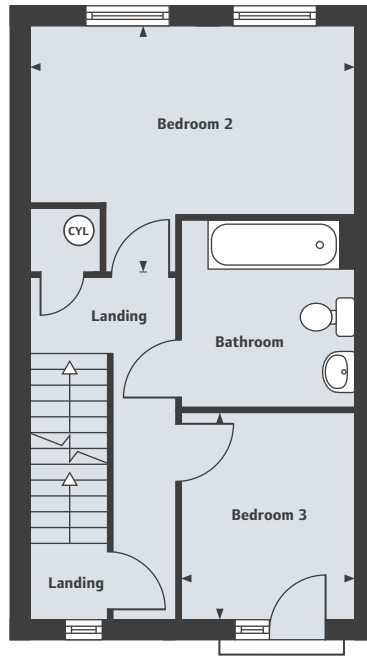
THE BRIDGEWATER

3 bedroom home

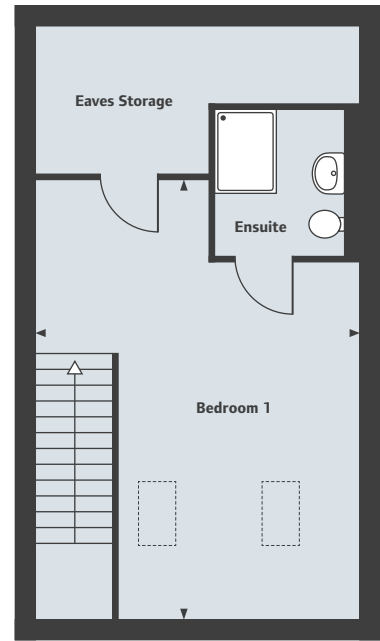




Ground Floor



First Floor



Second Floor

THE BRIDGEWATER

3 bedroom home

Ground Floor

Living Room	5.53m x 3.51m	18'2" x 11'6"
Kitchen/Dining Area	4.71m x 3.16m	15'5" x 10'4"

First Floor

Bedroom 2	4.81m x 2.56m	15'9" x 8'5"
Bedroom 3	2.98m x 2.51m	9'9" x 8'3"

Second Floor

Bedroom 1	6.40m x 3.51m	21'0" x 11'6"
Total Area	105 sq.m	1,130 sq.ft

Off Plymouth View, Brunswick, Manchester M13 9SZ

0161 8220 629

lindenhomes.co.uk/newbrunswick

Linden
HOMES

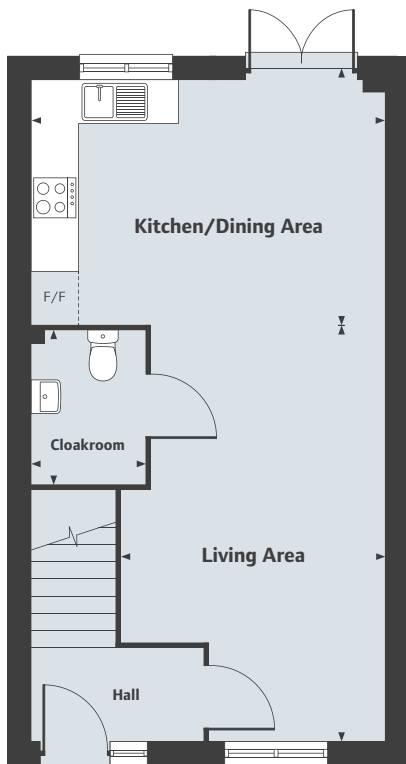
Please ask to see separate kitchen layouts. Computer generated image shown not to scale. Finishes and materials may vary from those shown on a plot by plot basis and landscaping is illustrative only. The image does not represent any contractual offer on behalf of Linden Homes. Please note that all floorplans and dimensions are taken from architectural drawings and are for guidance only – not to scale. Dimensions stated are within a tolerance of plus or minus 50mm. Overall dimensions are for reference only and should not be used for ordering carpets, furniture or similar. Please note that finishes, materials and measurements may alter slightly and are subject to change. Please ask your Sales Executive for specific details. 2081520/January 2021.



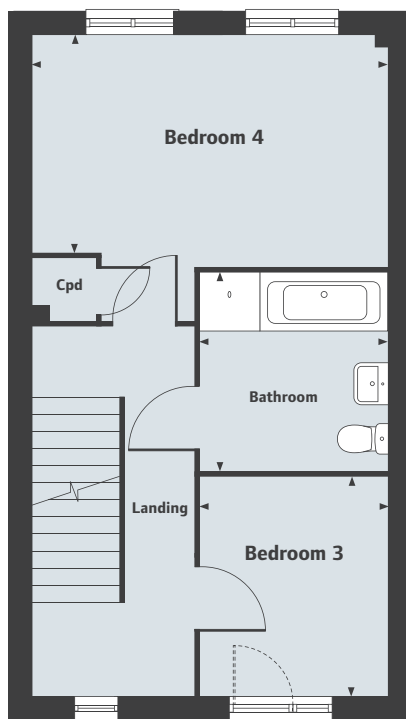
THE HOWLEY

4 bedroom home

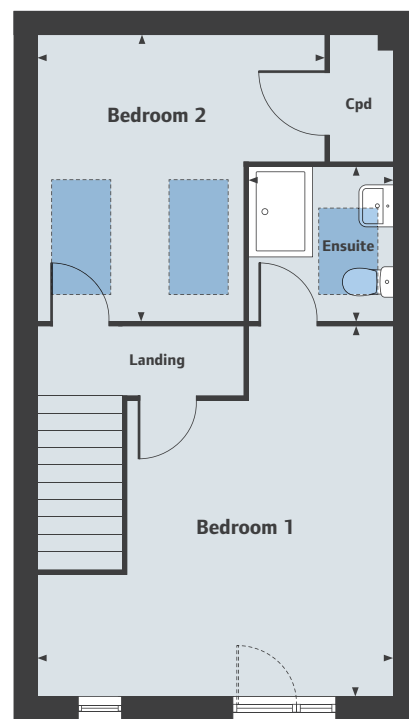




Ground Floor



First Floor



Second Floor

THE HOWLEY

4 bedroom home

Ground Floor

Kitchen/Dining Area	4.68m x 3.22m	15'4" x 10'7"
Living Area	5.50m x 3.48m	18'1" x 11'5"
Cloakroom	2.00m x 1.50m	6'7" x 4'11"

First Floor

Bedroom 3	2.85m x 2.50m	9'4" x 8'2"
Bedroom 4	4.68m x 3.06m	15'4" x 10'0"
Bathroom	2.60m x 2.47m	8'6" x 8'1"

Second Floor

Bedroom 1	4.86m x 4.68m	15'11" x 15'4"
Ensuite	2.00m x 1.87m	6'7" x 6'2"
Bedroom 2	3.77m x 3.75m	12'4" x 12'4"

Off Plymouth View, Brunswick, Manchester M13 9SZ

0161 8220 629

lindenhomes.co.uk/newbrunswick

Linden
HOMES

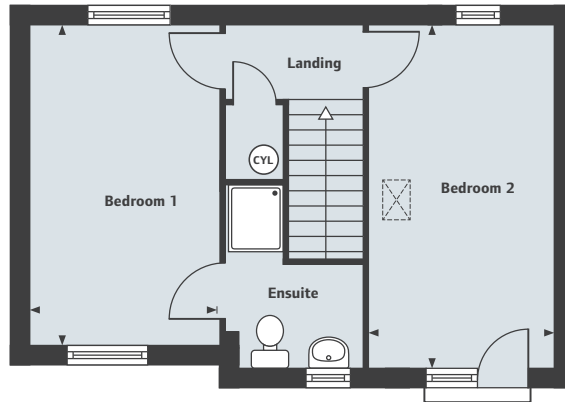
Please ask to see separate kitchen layouts. Computer generated image shown not to scale. Finishes and materials may vary from those shown on a plot by plot basis and landscaping is illustrative only. The image does not represent any contractual offer on behalf of Linden Homes. Please note that all floorplans and dimensions are taken from architectural drawings and are for guidance only – not to scale. Dimensions stated are within a tolerance of plus or minus 50mm. Overall dimensions are for reference only and should not be used for ordering carpets, furniture or similar. Please note that finishes, materials and measurements may alter slightly and are subject to change. Please ask your Sales Executive for specific details. 2081520/January 2021.



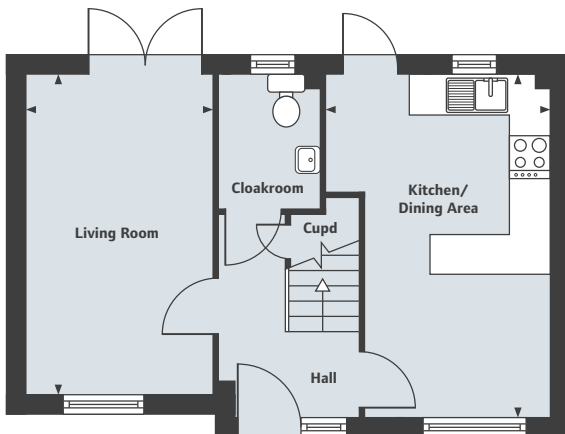
THE IRWELL

4 bedroom home

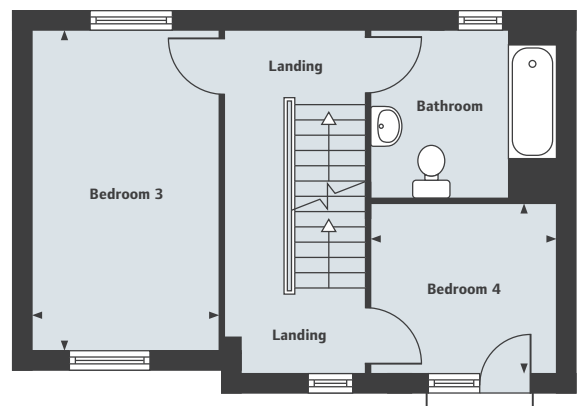




Second Floor



Ground Floor



First Floor

THE IRWELL

4 bedroom home

Ground Floor

Living Room	4.79m x 2.79m	15'9" x 9'2"
Kitchen/Dining Area	5.13m x 2.77m	16'10" x 9'1"

First Floor

Bedroom 3	4.79m x 2.79m	15'9" x 9'2"
Bedroom 4	2.77m x 2.53m	9'1" x 8'4"

Second Floor

Bedroom 1	4.79m x 2.84m	15'9" x 9'4"
Bedroom 2	5.13m x 2.77m	16'10" x 9'1"
Total Area	119 sq.m	1,285 sq.ft

Off Plymouth View, Brunswick, Manchester, M13 9SZ

0843 634 2765

lindhomes.co.uk/newbrunswick

Linden
HOMES

Please ask to see separate kitchen layouts. Computer generated image shown not to scale. Finishes and materials may vary from those shown on a plot by plot basis and landscaping is illustrative only. The image does not represent any contractual offer on behalf of Linden Homes. Please note that all floorplans and dimensions are taken from architectural drawings and are for guidance only – not to scale. Dimensions stated are within a tolerance of plus or minus 50mm. Overall dimensions are for reference only and should not be used for ordering carpets, furniture or similar. Please note that finishes, materials and measurements may alter slightly and are subject to change. Please ask your Sales Executive for specific details. 2081520/January 2021.