

Kings Newton

Grantham





Kings Newton Grantham

A collection of brand new 2, 3, 4 & 5 bedroom homes in the historic market town of Grantham.

Situated on the banks of the River Witham, Grantham has a rich heritage dating back to 1086. It's full of charming shops, restaurants and cafés, and is bustling with things to do. Take a tour of Belvoir Castle, sink a hole in one at Belton Park Golf Club or speed around a go-kart track at up to 50mph.

If you feel like escaping the everyday, you don't have to go far before you're surrounded by beautiful, scenic countryside. Or you could always treat yourself to a pamper session at the Belton Woods Hotel & Country Club.

Got children? There are plenty of education options for all ages, including several primary schools, three 'outstanding' secondary schools, together with Grantham College and University Centre for the older ones.

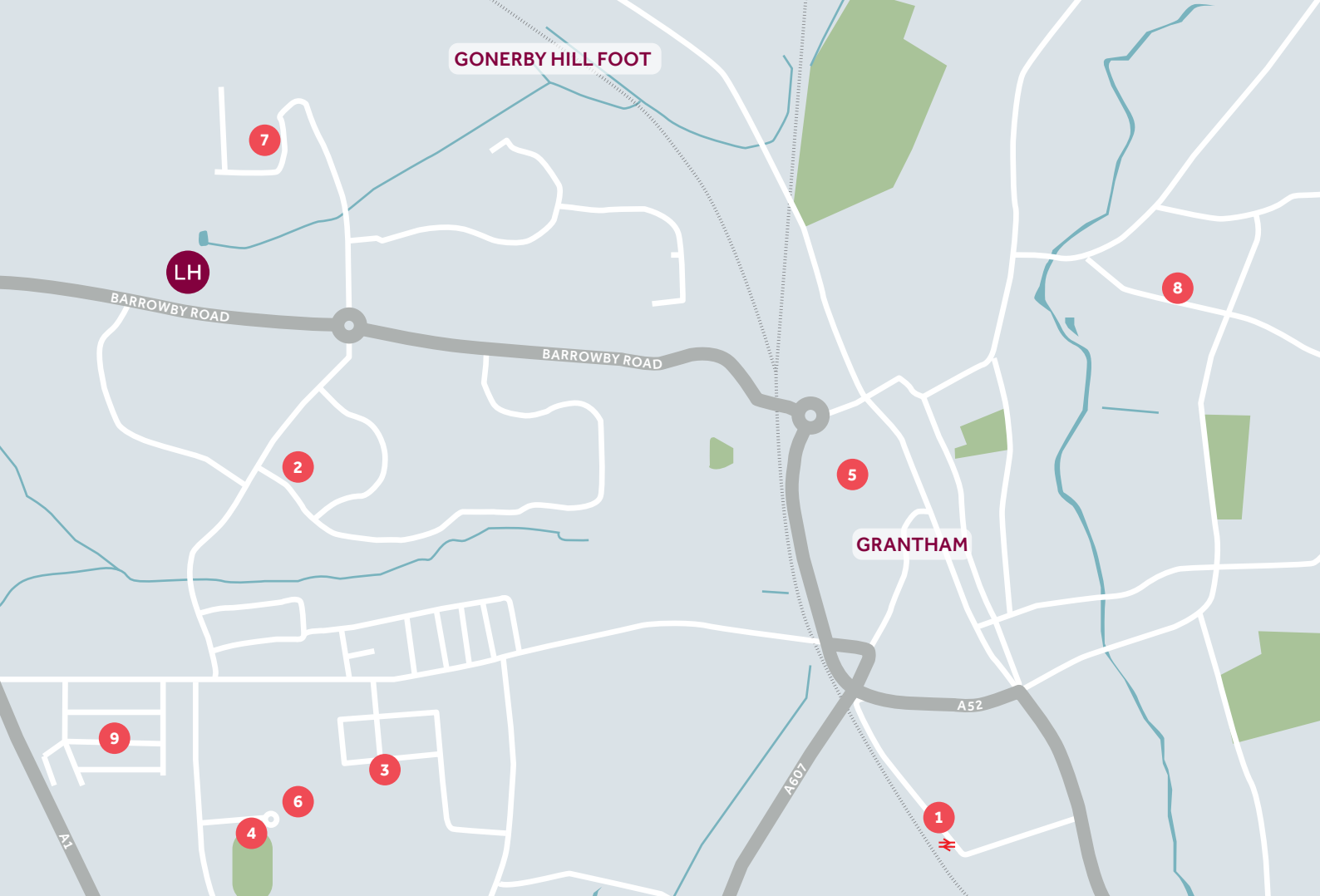
You'll find getting around, for business or pleasure, is a doddle. The A1 road is nearby, while Grantham railway station has express trains to London King's Cross, as well as trains all the way up to Edinburgh on the East Coast Main Line.

Kings Newton

Barrowby Road, Grantham, NG31 8NR | 01476 338 687

lindenhomes.co.uk

Linden
HOMES



Around the local neighbourhood

1

Grantham train station
NG31 6BT

2

Tesco Express
NG31 8RX

3

The West Grantham
Church of England
Secondary Academy
NG31 7PX

4

Grantham Town
Football Club
NG31 7XQ

5

Asda Superstore
NG31 6NZ

6

Grantham Meres
Leisure Centre
NG31 7XQ

7

Poplar Farm Primary School
NG31 8XF

8

Wyndham Park
NG31 9BA

9

Beedon Play Park
NG31 7NN

Linden Homes, East Midlands region
Ashurst, Southgate Park, Bakewell Road, Peterborough PE2 6YS.
T: 01732 280400

Distances shown are by road (Source: Google). Fastest journey times are shown
(Source: National Rail Enquiries). 2886607 / 07.23

lindenhomes.co.uk

Linden
HOMES

Kings Newton Grantham

Development layout



5 bedroom home

- The Ripley

4 bedroom home

- The Aslin
- The Cottingham
- The Knightley
- The Myline
- The Pembroke

3 bedroom home

- The Eveleigh
- The Mountford
- The Wyatt

2 bedroom home

- The Hardwick

***Discounted Open Market Dwellings.**
Subject to strict eligibility criteria.
For full details, please refer to the
Sales Consultant.

embankment/slope v visitor car parking

This plan has been produced for home identification purposes only and is not to scale. The development layout, landscaping and tenure of all dwellings may be subject to change throughout the course of the development. Finishes and materials may vary from those shown on the plan. Please check the details of your chosen plot and housetype with the sales consultant. Development layout plan correct at time of production.



Specification

We give you so much more

Kings Newton

Barrowby Road, Grantham, NG31 8NR | 01476 338 687

lindenhomes.co.uk

Linden
HOMES

Specification

We give you so much more

Each home will be independently surveyed during construction by NHBC Buildmark, who will issue their 10 year warranty certificate on completion of the home.

Kitchen

2 & 3 bedroom homes

4 & 5 bedroom homes

Symphony Konzept range kitchen with laminate worktops	■	■
Stainless steel sink and drainer (single bowl) with chrome mixer tap, also in utility area (where applicable)	■	■
Indesit gas hob (60cm) with Indesit built-in single oven, stainless steel splashback, and integrated silver hood	■	
Indesit gas hob (60 cm) with Indesit built-in single oven, stainless steel splashback, and 60cm stainless steel chimney hood (The Aslin and The Mylne only)		■
Indesit gas hob (60 cm) with built-in double oven, stainless steel splashback, and 60cm stainless steel chimney hood		■
Fridge/freezer space	■	■
Space for integrated dishwasher with plumbing and electrics	■	■
Space for washing machine	■	■

Bathrooms and en suites(s)

Ideal Standard contemporary white sanitaryware suite	■	■
Ideal Standard close coupled WC to cloakroom	■	■
Low profile shower tray with glass enclosure in en suite	■	■
Handheld hair wash attachment in bathroom. The Hardwick only has shower over the bath	■	■
Choice of Porcelanosa wall tiling (splashback, half-height over bath, and full-height to shower cubicle)*	■	■

Doors and Windows

Front door with multi-point security locking system and security chain	■	■
PVCu double glazing to windows and double glazed PVCu French doors	■	■
Internal doors to be ladder door style with satin finish handles	■	■
Paving outside French/bifold door (where applicable)	■	■

Other

White painted walls and smooth white ceilings	■	■
Multi-media point in living room, TV point to lounge and family room (where applicable), master telephone socket (plus to study where shown)	■	■
Ideal combi-boiler with Honeywell heating control and room thermostat(s). The Cottingham and The Ripley have Ideal system boiler and separate hot water cylinder	■	■
Thermostatic valves to all radiators (with the exception of rooms with separate thermostat control)	■	■
Contemporary lantern to front door, and outdoor light wiring only to the rear door	■	■
Mains wired smoke detectors with battery back-up and battery powered carbon monoxide detector (wall mounted)	■	■
Power and lighting to garage (where in curtilage of the plot)	■	■
Enclosed, fenced rear garden and garden gate (where applicable)	■	■
First two years' customer service support from Linden Homes	■	■

*Not applicable to the Hardwick house type. Please speak to your Sales Consultant for more information.

The specification shown in this leaflet is correct at the time of going to press. Linden Homes is continually reviewing and updating the specification on all housetypes and therefore reserves the right to change specification details. Photographs depict a typical Linden Homes interior and may include optional upgrades. For full details regarding current specification and finishes, for the plots you are interested in, please see our sales consultant.

When you have finished with this leaflet please recycle it.

2886607 / 07.23

Linden
HOMES



The Hardwick

2 bedroom home

Kings Newton

Barrowby Road, Grantham, NG31 8NR | 01476 338 687

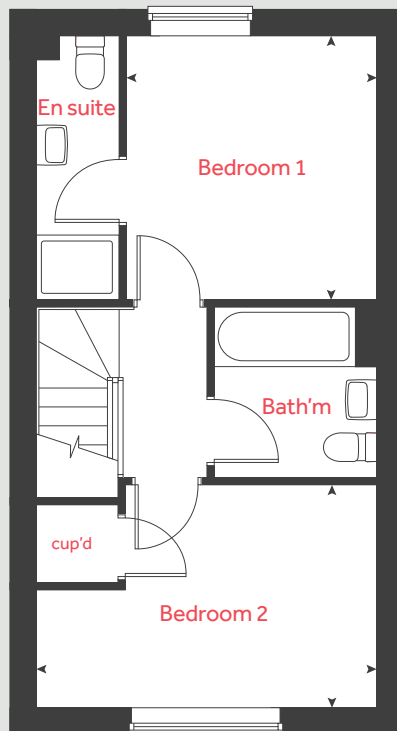
lindenhomes.co.uk

Linden
HOMES

The Hardwick

2 bedroom home

First floor



Ground floor

Living room

4.08m x 3.70m 13'5" x 12'2"

Kitchen / dining area

4.08m x 3.15m 13'5" x 10'4"

First floor

Bedroom 1

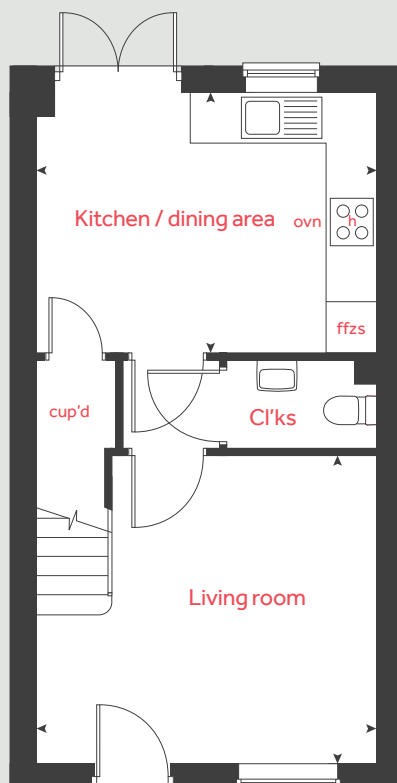
3.16m x 3.01m 10'4" x 9'11"

Bedroom 2

4.08m x 2.70m 13'5" x 8'10"

h	hob	ffzs	fridge freezer space
ovn	oven	◀ ▶	measuring points
cup'd	cupboard		

Ground floor



Please note, floorplans and dimensions are taken from architectural drawings and are for guidance only. Dimensions stated are within a tolerance of plus or minus 50mm. Overall dimensions are usually stated and there may be projections into these. With our continual improvement policy we constantly review our designs and specification to ensure we deliver the best products to our customers. Computer generated images not to scale. Finishes and materials may vary and landscaping is illustrative only. Kitchen layouts are indicative only and may change. To confirm specific details on our homes please see our sales consultant.

When you have finished with this leaflet please recycle it.

2886607 / 07.23

Linden
HOMES



The Wyatt

3 bedroom home

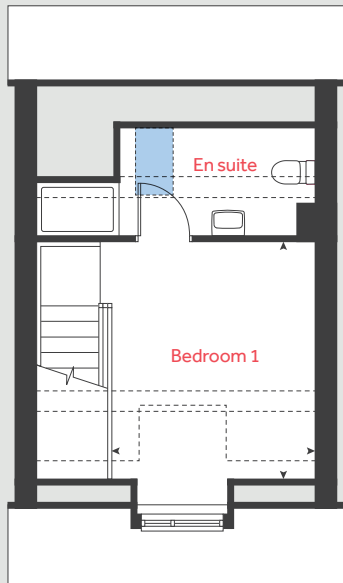
Kings Newton

Barrowby Road, Grantham, NG31 8NR | 01476 338 687

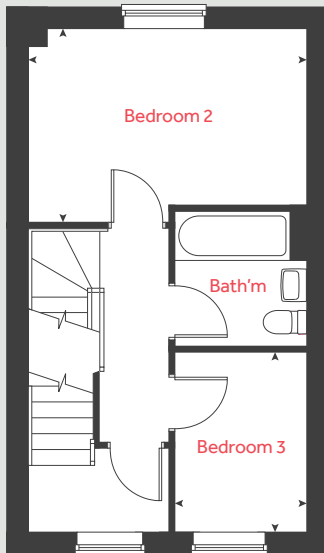
[lindenhomes.co.uk](https://www.lindenhomes.co.uk)

Linden
HOMES

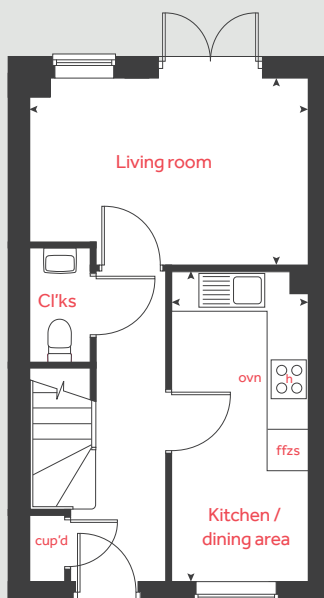
Second floor



First floor



Ground floor



The Wyatt

3 bedroom home

Ground floor

Living room

4.08m x 2.75m 13'5" x 9'0"

Kitchen / dining area

4.56m x 2.01m 15'0" x 6'7"

First floor

Bedroom 2

4.08m x 2.84m 13'5" x 9'4"

Bedroom 3

2.41m x 1.93m 7'11" x 6'4"

Second floor

Bedroom 1

3.42m x 3.02m 11'3" x 9'11"

h	hob	■	velux window
ovn	oven	◀ ▶	measuring points
cup'd	cupboard	- - -	reduced ceiling height
ffzs	fridge freezer space		

Please note, floorplans and dimensions are taken from architectural drawings and are for guidance only. Dimensions stated are within a tolerance of plus or minus 50mm. Overall dimensions are usually stated and there may be projections into these. With our continual improvement policy we constantly review our designs and specification to ensure we deliver the best products to our customers. Computer generated images not to scale. Finishes and materials may vary and landscaping is illustrative only. Kitchen layouts are indicative only and may change. To confirm specific details on our homes please see our sales consultant.

When you have finished with this leaflet please recycle it.

2886607 / 07.23

Linden
HOMES



The Eveleigh

3 bedroom home

Kings Newton

Barrowby Road, Grantham, NG31 8NR | 01476 338 687

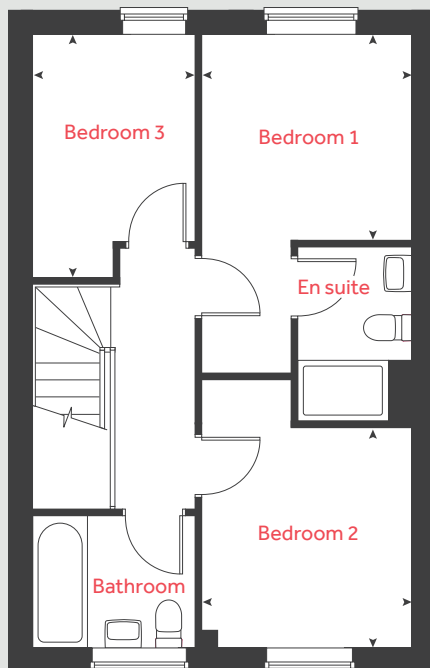
lindenhomes.co.uk

Linden
HOMES

The Eveleigh

3 bedroom home

First floor



Ground floor

Living room

4.98m x 3.19m 16'4" x 10'6"

Kitchen / dining area

4.78m x 2.80m 15'8" x 9'2"

First floor

Bedroom 1

2.77m x 2.71m 9'1" x 8'11"

Bedroom 2

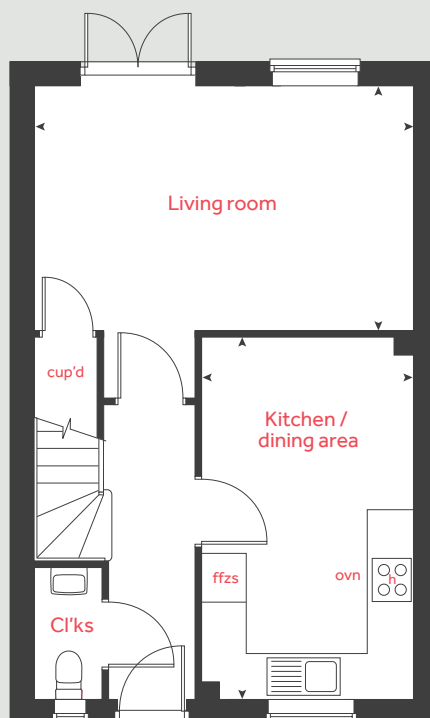
2.89m x 2.77m 9'6" x 9'1"

Bedroom 3

3.19m x 2.12m 10'6" x 6'11"

h	hob	ffzs	fridge freezer space
ovn	oven	◀ ▶	measuring points
cup'd	cupboard		

Ground floor



Please note, floorplans and dimensions are taken from architectural drawings and are for guidance only. Dimensions stated are within a tolerance of plus or minus 50mm. Overall dimensions are usually stated and there may be projections into these. With our continual improvement policy we constantly review our designs and specification to ensure we deliver the best products to our customers. Computer generated images not to scale. Finishes and materials may vary and landscaping is illustrative only. Kitchen layouts are indicative only and may change. To confirm specific details on our homes please see our sales consultant.

When you have finished with this leaflet please recycle it.

2886607 / 07.23

Linden
HOMES



The Mountford

3 bedroom home

Kings Newton

Barrowby Road, Grantham, NG31 8NR | 01476 338 687

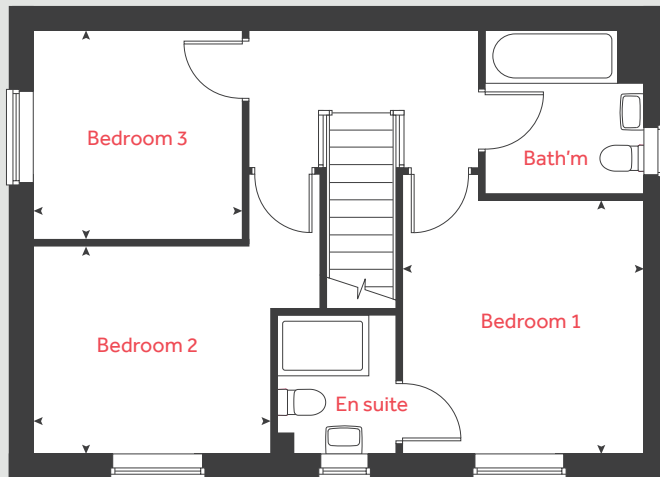
[lindenhomes.co.uk](https://www.lindenhomes.co.uk)

Linden
HOMES

The Mountford

3 bedroom home

First floor



Ground floor

Living room

5.59m x 3.12m 18'4" x 10'3"

Kitchen / dining area

5.59m x 2.70m 18'4" x 8'10"

First floor

Bedroom 1

3.35m x 3.18m 11'0" x 10'5"

Bedroom 2

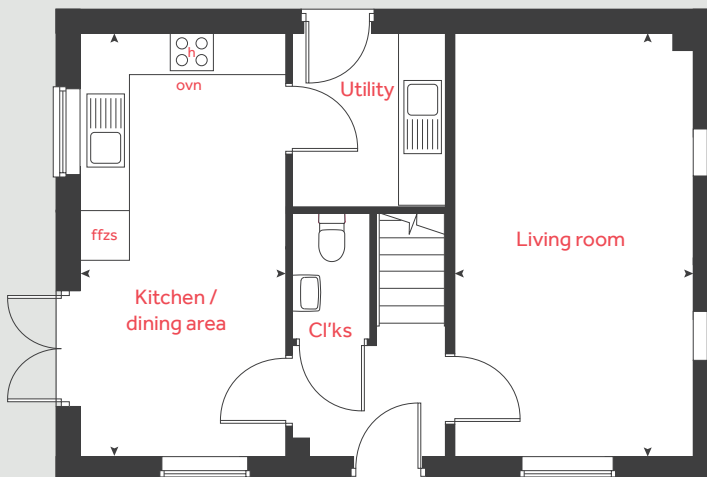
3.14m x 2.74m 10'4" x 9'0"

Bedroom 3

2.76m x 2.76m 9'1" x 9'1"

h	hob	ffzs	fridge freezer space
ovn	oven	◀ ▶	measuring points
cup'd	cupboard		

Ground floor



Please note, floorplans and dimensions are taken from architectural drawings and are for guidance only. Dimensions stated are within a tolerance of plus or minus 50mm. Overall dimensions are usually stated and there may be projections into these. With our continual improvement policy we constantly review our designs and specification to ensure we deliver the best products to our customers. Computer generated images not to scale. Finishes and materials may vary and landscaping is illustrative only. Kitchen layouts are indicative only and may change. To confirm specific details on our homes please see our sales consultant.

When you have finished with this leaflet please recycle it.

2886607 / 07.23

Linden
HOMES



The Aslin

4 bedroom home

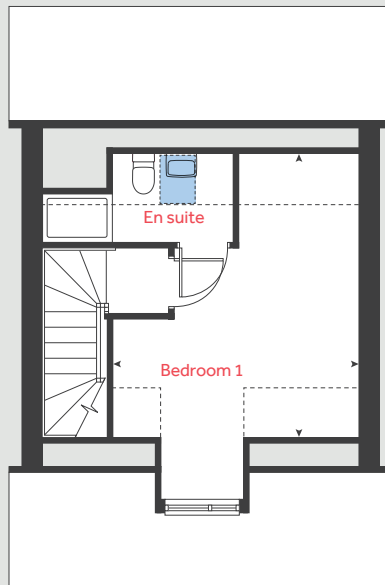
Kings Newton

Barrowby Road, Grantham, NG31 8NR | 01476 338 687

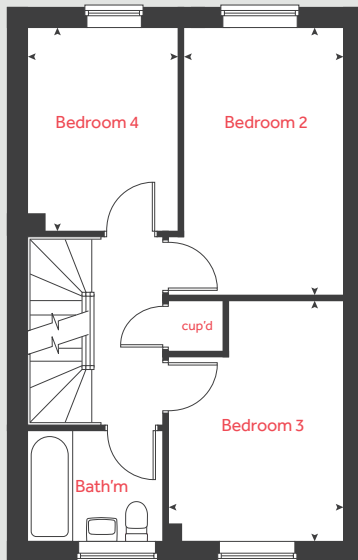
[lindenhomes.co.uk](https://www.lindenhomes.co.uk)

Linden
HOMES

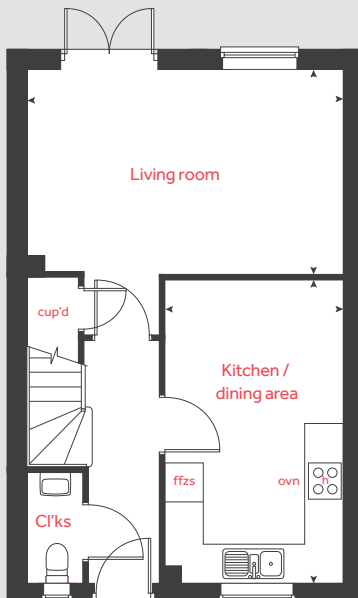
Second floor



First floor



Ground floor



The Aslin

4 bedroom home

Ground floor

Living room

4.98m x 3.20m 16'4" x 10'6"

Kitchen / dining area

4.78m x 2.80m 15'8" x 9'2"

First floor

Bedroom 2

4.21m x 2.80m 13'10" x 9'2"

Bedroom 3

3.78m x 2.80m 12'5" x 9'2"

Bedroom 4

3.20m x 2.10m 10'6" x 6'11"

Second floor

Bedroom 1

4.42m x 3.89m 14'6" x 12'9"

h	hob	velux window
ovn	oven	measuring points
cup'd	cupboard	reduced ceiling height
ffzs	fridge freezer space	

Please note, floorplans and dimensions are taken from architectural drawings and are for guidance only. Dimensions stated are within a tolerance of plus or minus 50mm. Overall dimensions are usually stated and there may be projections into these. With our continual improvement policy we constantly review our designs and specification to ensure we deliver the best products to our customers. Computer generated images not to scale. Finishes and materials may vary and landscaping is illustrative only. Kitchen layouts are indicative only and may change. To confirm specific details on our homes please see our sales consultant.

When you have finished with this leaflet please recycle it.

2886607 / 07.23

Linden
HOMES



The Mylne

4 bedroom home

Kings Newton

Barrowby Road, Grantham, NG31 8NR | 01476 338 687

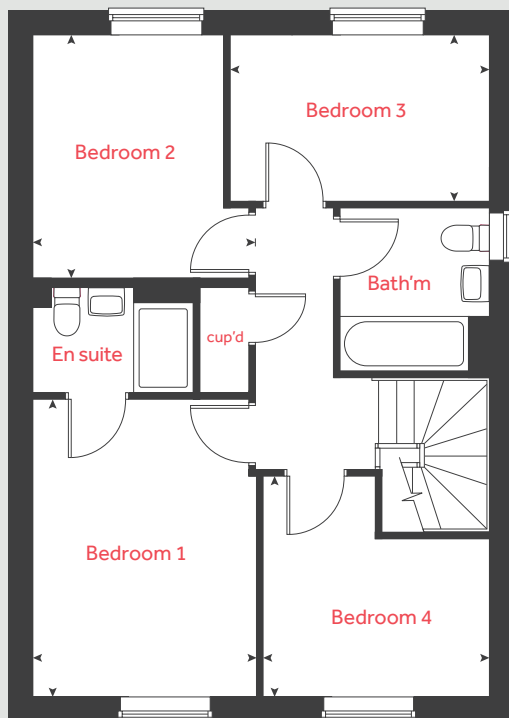
lindenhomes.co.uk

Linden
HOMES

The Mylne

4 bedroom home

First floor



Ground floor

Living room

4.84m x 3.40m 15'10" x 11'2"

Kitchen

4.37m x 3.06m 14'4" x 10'1"

Dining / family area

3.76m x 2.98m 12'4" x 9'9"

First floor

Bedroom 1

3.96m x 2.95m 12'11" x 9'8"

Bedroom 2

3.21m x 2.52m 10'6" x 8'3"

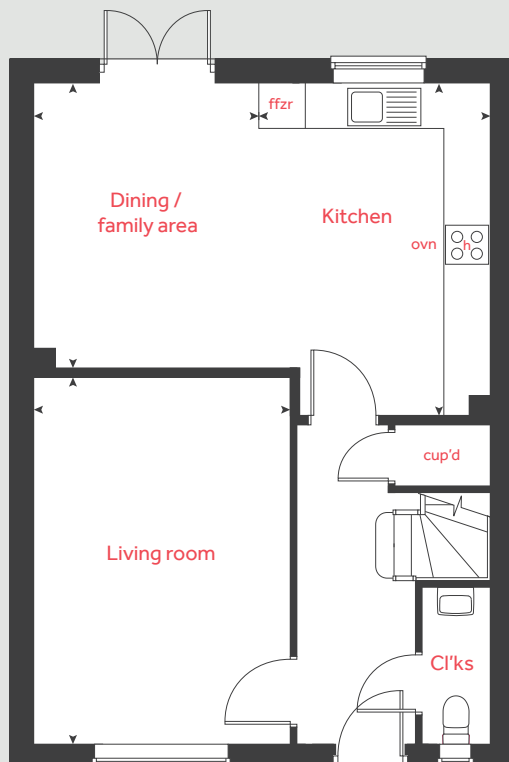
Bedroom 3

3.43m x 2.19m 11'3" x 7'2"

Bedroom 4

3.00m x 2.08m 9'10" x 6'10"

Ground floor



h	hob	ffzr	integrated fridge freezer
ovn	oven	◀ ▶	measuring points
cup'd	cupboard		

Please note, floorplans and dimensions are taken from architectural drawings and are for guidance only. Dimensions stated are within a tolerance of plus or minus 50mm. Overall dimensions are usually stated and there may be projections into these. With our continual improvement policy we constantly review our designs and specification to ensure we deliver the best products to our customers. Computer generated images not to scale. Finishes and materials may vary and landscaping is illustrative only. Kitchen layouts are indicative only and may change. To confirm specific details on our homes please see our sales consultant.

When you have finished with this leaflet please recycle it.

2886607 / 07.23

Linden
HOMES



The Pembroke

4 bedroom home

Kings Newton

Barrowby Road, Grantham, NG31 8NR | 01476 338 687

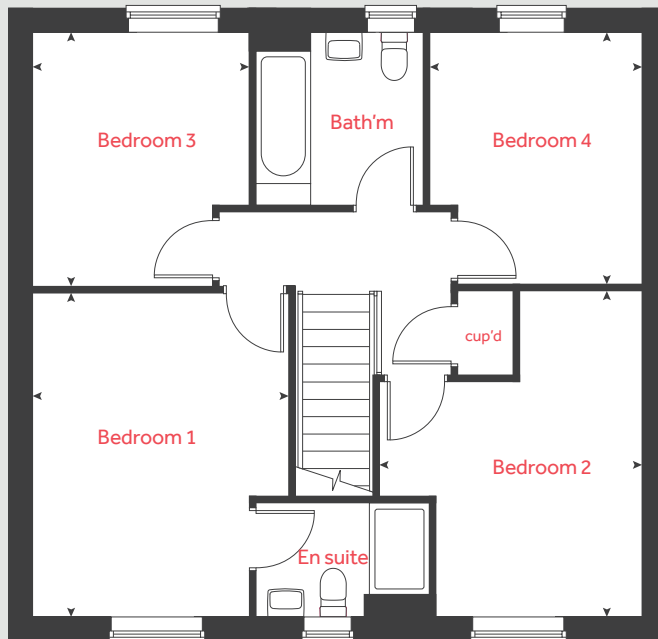
lindenhomes.co.uk

Linden
HOMES

The Pembroke

4 bedroom home

First floor



Ground floor

Living room

4.83m x 3.49m 15'10" x 11'5"

Kitchen

3.35m x 3.05m 11'0" x 10'0"

Dining / family area

5.02m x 2.75m 16'6" x 9'0"

Study

2.40m x 2.36m 7'10" x 7'9"

First floor

Bedroom 1

4.28m x 3.39m 14'1" x 11'1"

Bedroom 2

4.31m x 2.74m 14'2" x 9'0"

Bedroom 3

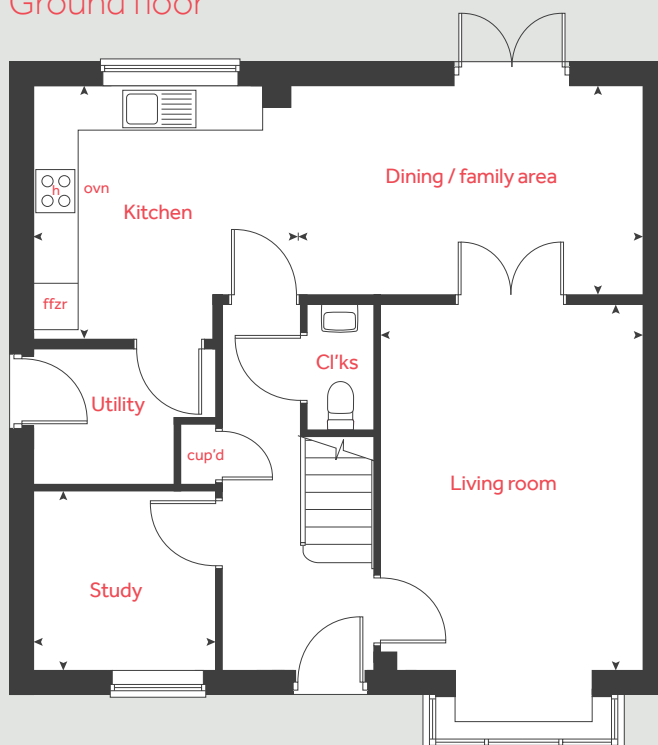
3.36m x 2.87m 11'0" x 9'5"

Bedroom 4

3.33m x 2.81m 10'11" x 9'3"

h	hob	ffzr	integrated fridge freezer
ovn	oven	◀ ▶	measuring points
cup'd	cupboard		

Ground floor



Please note, floorplans and dimensions are taken from architectural drawings and are for guidance only. Dimensions stated are within a tolerance of plus or minus 50mm. Overall dimensions are usually stated and there may be projections into these. With our continual improvement policy we constantly review our designs and specification to ensure we deliver the best products to our customers. Computer generated images not to scale. Finishes and materials may vary and landscaping is illustrative only. Kitchen layouts are indicative only and may change. To confirm specific details on our homes please see our sales consultant.

When you have finished with this leaflet please recycle it.

2886607 / 07.23

Linden
HOMES



The Knightley

4 bedroom home

Kings Newton

Barrowby Road, Grantham, NG31 8NR | 01476 338 687

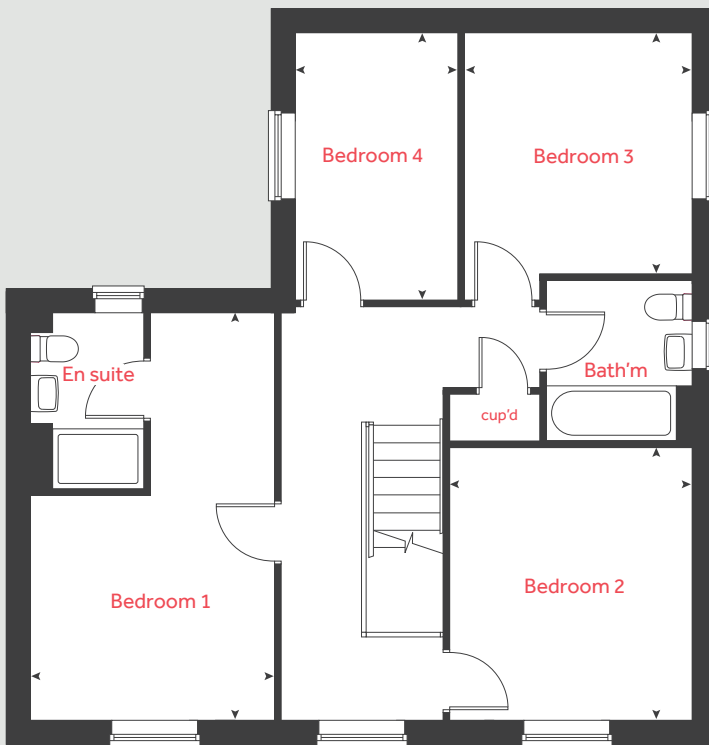
lindenhomes.co.uk

Linden
HOMES

The Knightley

4 bedroom home

First floor



Ground floor

Living room
5.37m x 3.23m 17'7" x 10'7"

Kitchen
3.20m x 2.80m 10'6" x 9'2"

Dining area
3.79m x 2.45m 12'5" x 8'0"

Family room
3.94m x 3.22m 12'11" x 10'7"

First floor

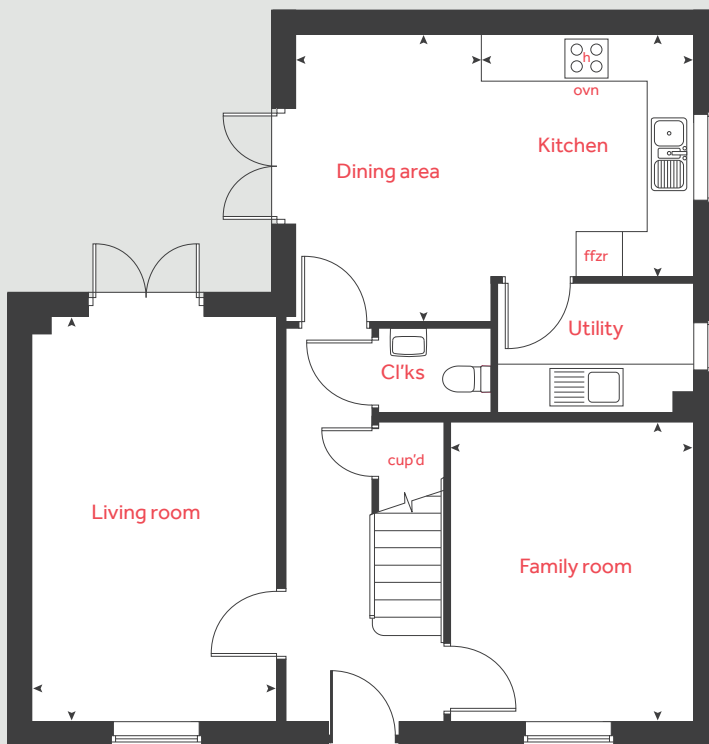
Bedroom 1
5.36m x 3.20m 17'7" x 10'6"

Bedroom 2
3.59m x 3.22m 11'9" x 10'7"

Bedroom 3
3.18m x 3.02m 10'5" x 9'11"

Bedroom 4
3.53m x 2.15m 11'7" x 7'1"

Ground floor



h hob ffzr integrated fridge freezer
ovn oven < > measuring points
cup'd cupboard

Please note, floorplans and dimensions are taken from architectural drawings and are for guidance only. Dimensions stated are within a tolerance of plus or minus 50mm. Overall dimensions are usually stated and there may be projections into these. With our continual improvement policy we constantly review our designs and specification to ensure we deliver the best products to our customers. Computer generated images not to scale. Finishes and materials may vary and landscaping is illustrative only. Kitchen layouts are indicative only and may change. To confirm specific details on our homes please see our sales consultant.

When you have finished with this leaflet please recycle it.

2886607 / 07.23

Linden
HOMES



The Ripley

4 bedroom home

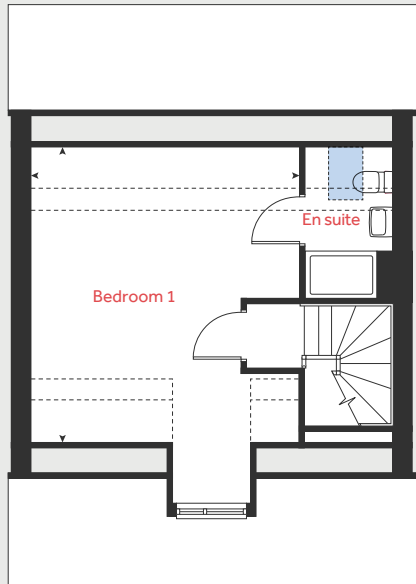
Kings Newton

Barrowby Road, Grantham, NG31 8NR | 01476 338 687

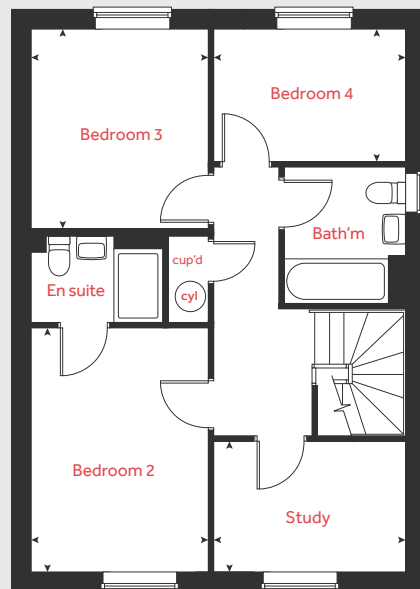
lindenhomes.co.uk

Linden
HOMES

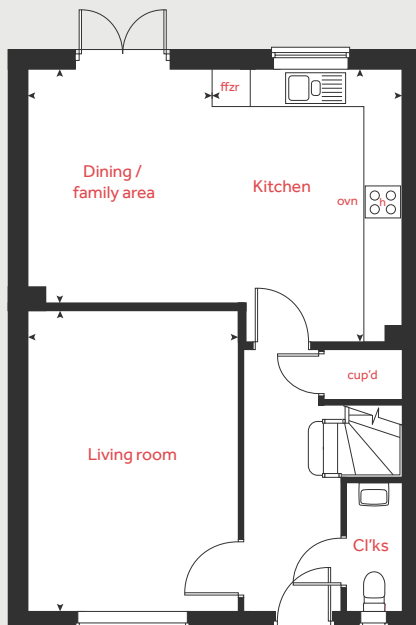
Second floor



First floor



Ground floor



The Ripley

4 bedroom home

Ground floor

Living room

4.83m x 3.39m 15'10" x 11'1"

Kitchen

6.04m x 4.37m 19'10" x 14'4"

Dining / family area

3.75m x 2.97m 12'4" x 9'9"

First floor

Bedroom 2

3.94m x 2.86m 12'11" x 9'5"

Bedroom 3

3.20m x 2.86m 10'6" x 9'5"

Bedroom 4

3.09m x 2.15m 10'2" x 7'1"

Study

3.09m x 2.08m 10'2" x 6'10"

Second floor

Bedroom 1

4.97m x 4.50m 16'4" x 14'9"

h	hob	ffzr	integrated fridge freezer
ovn	oven		velux window
cyl	hot water cylinder	◀ ▶	measuring points
cup'd	cupboard	- - -	reduced ceiling height

The floorplan has been produced for illustrative purposes only. Room sizes shown are between arrow points as indicated on plan. The dimensions have tolerances of + or - 50mm and should not be used other than for general guidance. If specific dimensions are required, enquiries should be made to the sales consultant. The floor plans shown are not to scale. Measurements are based on the original drawings. Slight variations may occur during construction.

The illustrations shown are computer generated impressions of how the property may look and are indicative only. External details or finishes may vary on individual plots and homes may be built in either detached or attached styles depending on the development layout. Exact specifications, window styles and whether a property is left or right-handed may differ from plot to plot. Please speak to our sales consultant for specific plot details.

When you have finished with this leaflet please recycle it.

Produced by Vistry Group Design Studio.
DS15066 / 11.25

Linden

HOMES