

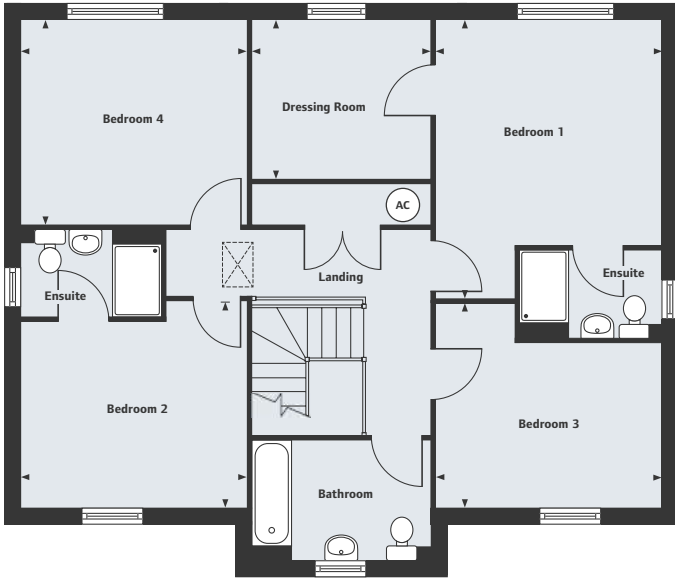
Morgan's Field

Broughton

The Lamborne

4 bedroom home

Total Area 187.84 Sq m 2022 Sq ft



First Floor

Bedroom 1	4.56m x 3.73m	14'11" x 12'2"
Dressing Room	2.89m x 2.59m	9'5" x 8'4"
Bedroom 2	3.73m x 3.30m	12'3" x 10'10"
Bedroom 3	3.72m x 3.30m	12'2" x 10'10"
Bedroom 4	3.73m x 3.34m	12'3" x 10'11"

Ground Floor

Living Room	5.83m x 3.67m	19'1" x 12'1"
Dining Area	5.95m x 2.67m	19'6" x 8'9"
Kitchen	6.71m x 4.79m	22'0" x 15'9"
Family Area	3.67m x 3.11m	12'1" x 10'2"
Study	3.67m x 1.98m	12'1" x 6'6"



Homes 12 and 14 are handed versions of the floor plans shown.

Morgan's Field

School Lane, Broughton, Hampshire SO20 8AN
2, 3, 4 & 5 bedroom homes

01794 725 348

Please note, floor plans and dimensions are taken from architectural drawings and are for guidance only. Dimensions stated are within a tolerance of plus or minus 50mm. Overall dimensions are usually stated and there may be projections into these. With our continual improvement policy we constantly review our designs and specification to ensure we deliver the best product to our customers. Computer generated images not to scale. Finishes and materials may vary and landscaping is illustrative only. Kitchen layouts are indicative only and may change. To confirm specific details on our homes please ask your Sales Executive.
XLNS332/November 2016.

